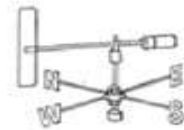




TANZANIA METEOROLOGICAL AUTHORITY



AGROMETEOROLOGICAL BULLETIN

No.06: 2023/24 Cropping Season

Review of November 21-30, 2023 and Outlook for December 1-10, 2023

HIGHLIGHTS

- Farmers are advised to continue making follow-ups on crops and crop fields for management, control of the excessive soil moisture, water logging, and the outbreak of pests and diseases in consultation with extension officers from their localities.
- Expected rains over some unimodal areas are likely to favor soil moisture replenishment. Therefore, farmers are advised to plant crop when soil moisture is enough for seed germination.

SYNOPTIC SUMMARY DURING NOVEMBER 21-30, 2023

During this dekad, the southern hemisphere high pressure systems (St. Helena and Mascarenes) continued relaxing while the northern hemisphere high pressure systems (Azores and Siberian) slightly intensified. This condition continued to keep the Inter Tropical Convergence Zone (ITCZ) over the country.

The slightly warmer than normal Sea Surface Temperatures (SSTs) was observed over the western Indian Ocean while neutral to slightly cool SSTs was observed over the eastern Indian Ocean. This condition influenced the advection of moist maritime wind towards the coastal areas of our country.

RAINFALL PERFORMANCE DURING NOVEMBER 21-30, 2023

During this dekad, most areas of the country experienced rainy conditions (rainfall between 26 mm – 100 mm). However, a few areas around Lake Victoria Basin and Lake Tanganyika experienced dekadal rainfall of more than 200 mm as indicated in Figure 1.

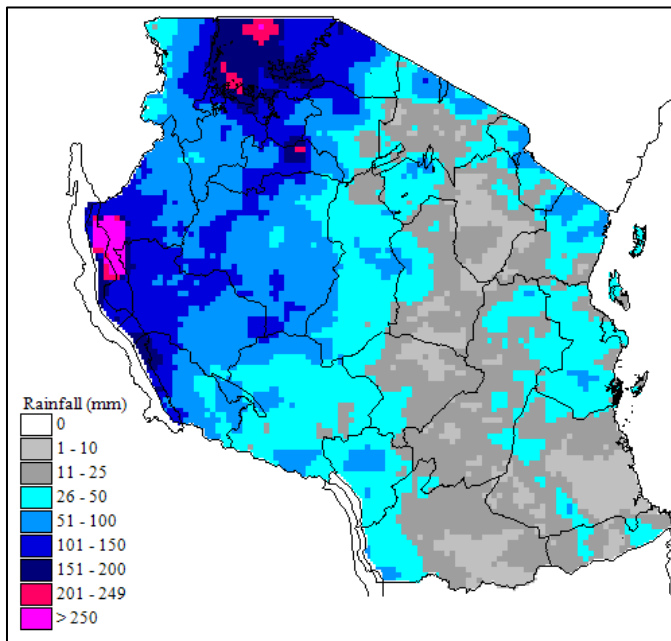


Fig. 1: Total dekadal rainfall for November 21-30, 2023

AGROMETEOROLOGICAL SUMMARY DURING NOVEMBER 21-30, 2023

During this dekad, most of the bimodal areas experienced rainy conditions that supported crop growth and development.

In bimodal areas, particularly the northern coast, northeastern highlands, and Lake Victoria basin, the maize crop was at the vegetative stage over some areas except in the Kagera region where maize crops were between tasselling and flowering stages and farmers continued with weeding activities. However, over some areas in the northern coast, particularly in Pwani region, maize crop was affected by the excessive water in the soil.

No.6: 2023/24 Cropping Season

The prevailing rainy conditions over Unguja and Pemba Islands continued to affect the harvesting and drying of cloves.

Farmers in unimodal areas were finalizing the field preparation activities while some farmers started planting maize, beans, and Irish potatoes.

The availability of water and pasture for livestock and wildlife has begun to improve in most areas that receive *Vuli* rains except for areas that receive *Msimu* rains, particularly central regions and Iringa where the situation is not satisfactory, especially for the herding community due to the existing dry conditions.

**HYDROMETEOROLOGICAL CONDITIONS
DURING NOVEMBER 21-30, 2023**

Water levels in dams and river flow discharges in most of the bimodal areas have increased. On the other hand, most areas in the unimodal regions experienced a decrease in water due to prevailing dry conditions during the dekad under review.

**EXPECTED SYNOPTIC CONDITIONS
DURING DECEMBER 1-10, 2023**

During this period, the southern hemisphere high pressure systems are expected to continue relaxing while the northern hemisphere high pressure systems are expected to continue intensifying. This condition is expected to continue keeping the ITCZ over the country. The slightly warm SSTs are expected over the west Indian Ocean while neutral to slightly cool SSTs observed over the eastern Indian Ocean. This condition is expected to influence the advection of moist maritime wind towards the coastal areas of our country.

**EXPECTED WEATHER CONDITIONS DURING
DECEMBER 1-10, 2023**

Areas around the Lake Victoria Basin (Kagera, Geita, Shinyanga, Mwanza, Simiyu, and Mara regions) and western regions (Kigoma, Katavi, and Tabora regions) and southern coast (Mtwara and Lindi regions) are expected to feature thundershowers over some areas.

Northeastern highlands (Arusha, Manyara, and Kilimanjaro regions) and southwestern highlands (Rukwa, Songwe, Mbeya, Njombe, and Iringa regions) are expected to feature rain showers over a few areas.

The northern coast (Tanga, the northern part of

Review of November 21-30, 2023, and Outlook for December 1-10, 2023

Morogoro, Pwani, and Dar es Salaam region, including the isles of Unguja and Pemba) is expected to feature rain showers with isolated cases of thunderstorms.

Central areas (Dodoma and Singida regions) and southern region (Ruvuma and southern part of Morogoro regions) are expected to feature rain showers over a few areas, especially during the first half of the dekad

**AGROMETEOROLOGICAL OUTLOOK AND
ADVISORY DURING DECEMBER 1-10, 2023**

The expected rainfall over some unimodal areas is likely to favor soil moisture replenishment. Therefore, farmers are advised to plant crops when soil moisture is enough for seed germination.

Farmers from areas experiencing *Vuli* rains are advised to continue making follow-ups on crops, and crop fields for management and control of the excessive water, and the outbreak of pests and diseases in consultation with extension officers from their localities.

In addition to that, weeding and the use of inputs are expected to be affected due to the increase in weeds, periods of rains, and excessive soil moisture.

Livestock keepers are advised to plant more pastures and harvest rainwater for future use.

Fishing communities are advised to strengthen the infrastructure of fish farming and take precautions by continuing to follow daily weather forecasts, especially for the Indian Ocean and the Great Lakes to make decisions on the right time to go fishing to avoid the effects of strong winds and heavy rains when they appear.

**EXPECTED HYDROMETEOROLOGICAL
CONDITIONS DURING DECEMBER 1-10, 2023**

Water levels in dams and river flow discharges are expected to slightly increase particularly over bimodal areas due to the expected rainy conditions.

The community is advised to continue to take precautions against flooding and continue to strengthen dams. In addition, the available water should be used carefully following the existing dry conditions, especially in areas that receive *Msimu* rains, and the rains have not started.