

AGROMETEOROLOGICAL BULLETIN

No.26: 2022/23 Cropping Season

Review of June 11-20, 2023, and Outlook for June 21-30, 2023

HIGHLIGHTS

- Most parts of the country are expected to experience dry and cool conditions.
- The expected dry conditions are likely to favour crop drying, harvesting and storage.
- Farmers, fishers, and livestock keepers are advised to use weather forecast updates in consultation with extension agents for proper management of their activities.

SYNOPTIC SUMMARY DURING

JUNE 11-20, 2023

During this period, the southern high pressure systems (St. Helena and Mascarene) slightly intensified while the northern high pressure systems (Azores and Siberia) relaxed. This condition maintained moderate wind speed over the coastal areas. The observed slightly warmer than normal Sea Surface Temperatures (SSTs) over the South-western Indian Ocean (SWIO) had minimal effect on the advection of moist maritime wind from the ocean towards the coastal areas. The slightly warmer than normal SSTs over the central equatorial Pacific Ocean and the eastern Atlantic Ocean (off Angola coast) had less contribution in the transference of moist westerly wind from the Congo basin towards the western sector of the country.

RAINFALL PERFORMANCE DURING

JUNE 11-20, 2023

During this dekad, much of the country was generally dry. The highest total amount of rainfall of 51.4 mm and 31.0 mm were recorded in Mwanza (Ukiringuru) and Bukoba respectively as indicated in Figure 1.

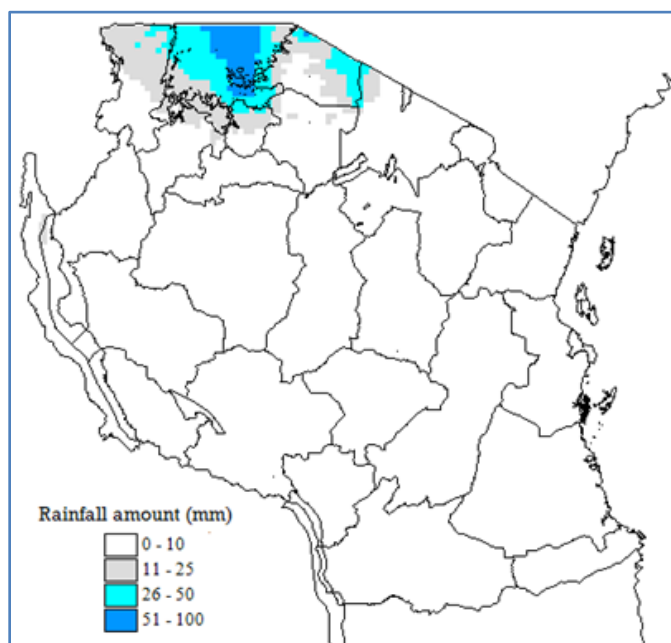


Figure 1: Total rainfall for the period of June 11-20, 2023

AGROMETEOROLOGICAL SUMMARY DURING

JUNE 11-20, 2023

During this period under review, in most parts of the unimodal rainfall regime farmers were mostly engaged with harvesting and storage of maize and paddy crop, except in Mbeya and Njombe regions where maize crop was at maturity and dry-out stages. Generally, maize and paddy crops were in good condition over most of the unimodal areas. On the other hand, the maize crop in most parts of the bimodal rainfall regime especially Mwanza, Simiyu, Mara, Kagera, Morogoro, Arusha, and Pwani regions was reported to be at the wax to full ripeness stage. The paddy crop at the maturity stage in the Pwani region that was reported to be affected by waterlogging in the previous dekad continues to grow well due to prevailed dry conditions.

No.26: 2022/23 Cropping Season

Water availability and pastures were in good condition over much of the country.

HYDROMETEOROLOGICAL CONDITIONS

DURING JUNE 11-20, 2023

Water levels in dams and river flow discharges remained normal in most areas of the country.

EXPECTED SYNOPTIC CONDITIONS

FROM JUNE 21-30, 2023

In the coming dekad the southern hemisphere's high pressure systems are expected to be slightly intensifying while their counterparts in the northern hemisphere's high pressure systems relaxing. This scenario is expected to slightly enhance wind speed over the coastal areas. On the other hand, the SSTs over the Indian Ocean are expected to be generally neutral over the eastern side and slightly warmer than normal over the western side. This condition is expected to slightly favour the advection of maritime winds towards the coastal areas. The expected warmer than normal SSTs over the southeast Atlantic Ocean (near Angola coast) will have less contribution in the advection of moist westerly wind from the Congo basin towards the western sector of the country.

EXPECTED WEATHER CONDITION DURING

JUNE 21-30, 2023

Areas around Lake Victoria basin (Kagera, Geita, Shinyanga, Mwanza, Simiyu, and Mara) are expected to feature isolated cases of thundershowers over a few areas.

The northern coast (Tanga, Northern part of Morogoro, Pwani, and Dar es Salaam together with isles of Unguja and Pemba) are expected to feature mainly dry conditions with few pockets of light rain showers.

Northeastern highlands (Arusha, Manyara, and Kilimanjaro), western (Kigoma, Katavi, and Tabora), central areas (Dodoma and Singida), southwestern highlands (Rukwa, Songwe, Mbeya, Njombe, and Iringa), southern Coast (Mtwara and Lindi) and southern region (Ruvuma and Southern part of Morogoro) are expected to feature mainly dry and cool conditions.

AGROMETEOROLOGICAL OUTLOOK AND

ADVISORY DURING JUNE 21-30, 2023

The expected dry conditions over much of the country will continue favouring maize and paddy crops at the maturity stage as well as the on-going crop harvesting activities.

Review of June 11-20, 2023 and Outlook for June 21-30, 2023

The expected slight rain showers particularly over a few areas around the Lake Victoria basin and northern coast will likely support maize crop at the wax to full ripeness stage.

Farmers and extension officers are advised to continue making follow-ups on crop fields for the management and control of pests and diseases. The fishing communities are advised to continue making good use of daily weather forecasts and advisories including marine forecasts for the Indian Ocean and the great lakes for better decisions.

Livestock keepers are also advised to ensure their animals are protected against adverse weather and outbreak disease.

Generally, it is advised to utilize weather forecasts and updates for their day-to-day activities.

EXPECTED HYDROMETEOROLOGICAL CONDITIONS

DURING JUNE 21-30, 2023

Water levels in dams and river flow discharges are expected to start decreasing due to dry conditions.

The communities are advised to make good use of available water following setting in of the dry season in many areas of the country.