

**HIGHLIGHTS**

- Dry conditions expected over central regions (Dodoma and Singida), southwestern highlands, and southern regions (Ruvuma and the southern part of Morogoro regions) will likely favor the ripening and drying of crops such as maize and sunflower as well as support harvesting of rice.
- Dry condition expected over the northeastern highlands (Arusha, Manyara, and Kilimanjaro regions) is likely to affect crop growth and development over those areas.
- Farmers, livestock keepers, and fishermen are advised to continue monitoring and take appropriate measures against any negative impacts on crops, crop fields, livestock, and fishing activities.

**SYNOPTIC SUMMARY DURING  
MAY 11-20, 2024**

**D**uring the dekad, the southern hemisphere high pressure systems (St. Helena and Mascarene) intensified while the northern hemisphere high pressure systems (Azores and Siberian) relaxed. This condition allowed the Inter Tropical Convergence Zone (TCZ) to oscillate further northwards and only touch some parts of Lake Victoria Basin (LVB) and extreme West.

The Sea Surface Temperatures (SSTs) over the western Indian Ocean were warmer than normal. This condition enhanced the formation of low pressure system whose position during the dekad weakened precipitation-making mechanisms along the coast and nearby areas.

The above weather systems favored thundershowers over the Lake Victoria Basin and west while other areas were mainly dry.

**RAINFALL PERFORMANCE DURING  
MAY 11-20, 2024**

**D**uring this dekad, most areas of the country received a ten-day total rainfall of less than 25 mm. However, a few areas along coastal belt regions including Pemba Island and areas around Lake Victoria experienced a dekad rainfall total ranging from 51 to 150 mm. Nevertheless, some areas in the central, western, and southwestern highlands were generally dry as indicated in Figure 1.

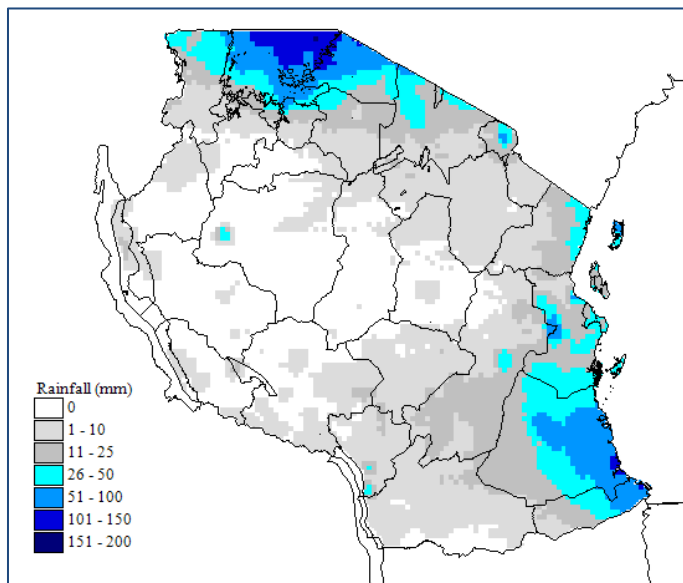


Figure 1: Total dekad rainfall for May 11-20, 2024

**AGROMETEOROLOGICAL SUMMARY  
DURING MAY 11-20, 2024**

**D**uring this dekad, rainy conditions experienced in a few areas of the country continued to support crop growth and development.

In most bimodal areas, the maize crop was at the vegetative stage except in areas around Lake Victoria where the crop was at the wax ripeness stage. Farmers in these areas were engaged in weeding, fertilizer, and pesticide applications.

Over unimodal rainfall pattern areas, maize crops were at full ripeness. Moreover, in the Rukwa, Tabora, Mbeya, Shinyanga, Mwanza, and Morogoro regions, paddy was at the full ripeness stage and farmers were engaged in harvesting activities.

The Sunflower was at the ripeness stages in Dodoma and Singida and some farmers were engaging in harvesting while in Morogoro region sunflowers were in the flowering stage.

The wheat crop was at the flowering stage, particularly in Njombe and Mbeya regions, while the bean crop was at the ripeness stage in Mbeya and Songwe regions.

Water and pasture for livestock and wildlife were sufficient over most areas in the country.

areas.

AGROMETEOROLOGICAL OUTLOOK AND  
ADVISORY DURING MAY 21-31, 2024

The expected rainfall in a few areas is likely to continue favoring and supporting crop growth and development, particularly in bimodal areas. Farmers in those areas are advised to take proper measures to the outbreak of pests and diseases in consultation with extension officers from their localities.

The dry conditions expected over central regions (Dodoma and Singida), southwestern highlands, and southern regions (Ruvuma and the southern part of Morogoro regions) will likely favor the ripening and drying of crops such as maize and sunflower as well as support harvesting of rice. However, the dry condition expected over the northeastern highlands (Arusha, Manyara, and Kilimanjaro regions) is likely to affect crop growth and development over those areas.

Generally, farmers are advised to make follow-ups on crops, and crop fields for management and control of the excessive water, and the outbreak of pests and diseases in consultation with the extension officers from their localities.

Livestock keepers are advised to gather and store pastures for future use.

Fishing communities are advised to continue make follow up on daily weather forecasts, especially for the Indian Ocean and the Great Lakes to make decisions on the right time to go out for fishing to avoid the effects of strong winds.

EXPECTED HYDROMETEOROLOGICAL CONDITIONS  
DURING MAY 21-31, 2024

Water levels in dams and river flow discharges specifically over the coastal areas are expected to have no significant change due to the expected weather conditions.

HYDROMETEOROLOGICAL CONDITIONS  
DURING MAY 11-20, 2024

Water levels in dams and river flow discharges had no significant change in most areas of the country.

EXPECTED SYNOPTIC CONDITIONS  
DURING MAY 21-31, 2024

During this period, the southern hemisphere high pressure systems are expected to intensify while the northern hemisphere high pressure systems are expected to relax. This condition is expected to allow the ITCZ to remain touching some parts of LVB.

The SSTs over the eastern and western of the Indian Ocean are expected to be slightly warmer than normal. This condition is expected to have less influence on precipitation-making mechanisms. On the other hand, the position of tropical storm "IALY" is expected to strengthen precipitation-making mechanisms along the coastal areas, especially during the beginning of the dekad.

EXPECTED WEATHER CONDITIONS DURING  
MAY 21-31, 2024

Areas around the Lake Victoria Basin (Kagera, Geita, Shinyanga, Mwanza, Simiyu, and Mara regions) are expected to feature isolated thundershowers over a few areas.

The western regions (Kigoma, Katavi, and Tabora) are expected to feature thunderstorms and rain over a few areas.

Southwestern highlands (Rukwa, Songwe, Mbeya, Njombe, and Iringa regions), northeastern highlands (Arusha, Manyara, and Kilimanjaro regions), central areas (Dodoma and Singida regions) and southern regions (Ruvuma and southern part of Morogoro regions) are expected to feature mainly dry conditions.

The northern coast (Tanga, northern part of Morogoro, Pwani, and Dar es Salaam region, including the isles of Unguja and Pemba) and southern coast (Mtwara and Lindi regions) are expected to feature rain showers over few areas.

Southern Coast (Mtwara and Lindi regions) is expected to experience light rain showers over a few areas.