

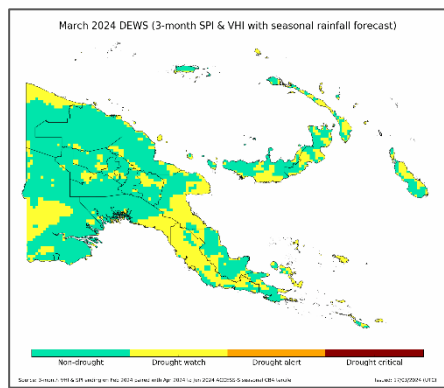
Key messages

Issued 26/03/2024

Milne Bay, NCD and New Ireland Provinces continue to be in Drought Watch status for the past 3 months with Moderate to Severe Vulnerability levels. However, conditions are likely to improve due to recent rainfall amounts. El Niño is dissipating and is likely to transition into neutral conditions towards the end of the wet season. An IOD is at neutral and is predicted to remain neutral at least into April. The wet season will continue till April and is likely to enhance rainfall across the country.

Drought Early Warning Status (DEWS)

Derived from observed 3-month rainfall and vegetation health, along with 3-month forecasted rainfall.



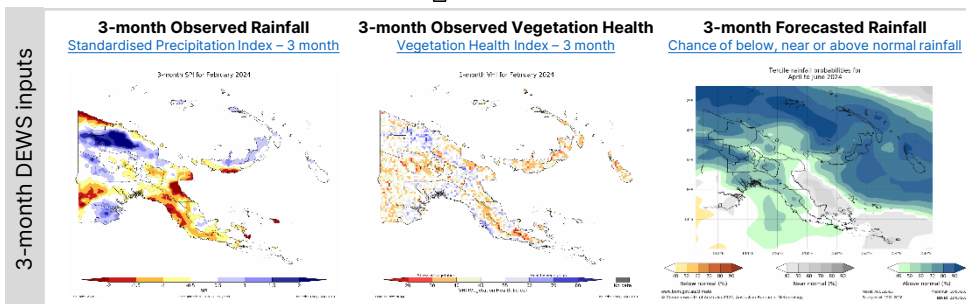
- Drought Watch conditions persist for Milne Bay, NCD and New Ireland at 3-month timescales since January 2024. However conditions are likely to improve due to recent rainfall amounts.
- Most parts of the Highlands region have received enough rainfall in recent months easing drought conditions in the 3 months timescale.
- At the 12-month rainfall timescale, deficiencies remain in some parts of Bougainville, MOMASE and Highlands regions. Long term deficiencies may continue to impact rainfall despite the short rainfall amounts in the areas.

3-month timescale provincial summary

(A province's overall status is given by its majority status on the map and is presented in this [summary table](#))

● Drought Watch	● Drought Alert	● Drought Critical
Below average rainfall or Stressed vegetation or Dry forecast	(Below average rainfall or Stressed vegetation) and Dry forecast	Below average rainfall and Stressed vegetation and Dry forecast
Bougainville, Central, Milne Bay, Morobe,, NCD, New Ireland		

click to enlarge



Links to other timescales:

- [1-month Drought Early Warning Status](#)
Drought early warning status using 1-month rainfall, 1-month vegetation health and 3-month rainfall forecast.
- [1-month Standardised Precipitation Index](#)
Rainfall over the last month.
- [1-month Vegetation Health Index](#)
Vegetation health over the last month.
- [6-month Drought Early Warning Status](#)
Drought early warning status using 6-month rainfall, 6-month vegetation health and 3-month rainfall forecast.
- [6-month Standardised Precipitation Index](#)
Rainfall over the last 6 months.
- [6-month Vegetation Health Index](#)
Vegetation health over the last 6 months.

Provinces at Risk if Drought Occurs

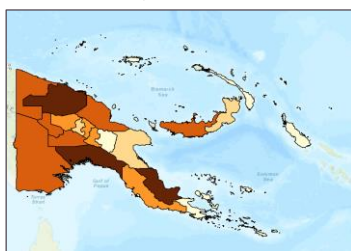
Contextualise drought early warning information with drought risk information.

Drought risk is the probability of harmful impacts resulting from interactions between drought hazard, exposure, and vulnerability. Hazard information is given by the Early Warning Status, with drought exposure and vulnerability levels shown in the maps below.

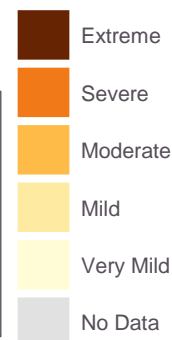
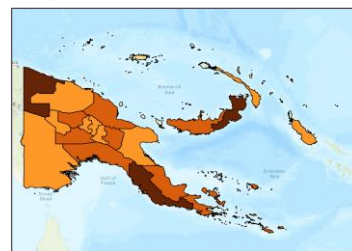
Provinces of concern:

- Milne Bay is at Drought Watch status with Severe vulnerability levels.
- New Ireland is at Drought Watch status with Moderate vulnerability levels.
- NCD is at Drought Watch status with a moderate exposure and severe vulnerability levels.

Exposure - Extent of exposed aspects of the total population and its livelihoods in an area which drought may occur.



Vulnerability - Likelihood of exposed factors to suffer negative impacts when drought occurs.



Climate Context

A summary of the relevant climate drivers affecting PNG over the coming months

- ACCESS-S outlook for one and three months shows above normal rainfall over the northern parts of the country. The southern parts of PNG are likely to receive average to above average rainfall in April and April to June.
- El Niño is dissipating and is likely to transition into neutral conditions towards the end of the wet season.
- An Indian Ocean Dipole (IOD) is at neutral level. Most climate models shows the IOD to remain neutral at least up to April.
- The MJO is active and strong in the Western Pacific. It is predicted to move eastward in coming days.