

HIGHLIGHTS

- The ongoing off-season rains some areas in bimodal regime may affect harvesting and drying of matured crops.
- Farmers, livestock keepers and fisheries are advised to take appropriate measures against expected excessive soil moisture, insects and strong winds.

SYNOPTIC SUMMARY DURING FEBRUARY 1-10, 2020

During this period, the northern high pressure systems (Azores and Siberian) continued intensifying while the southern high-pressure systems (St. Helena and Mascarene) relaxed. The situation allowed ITCZ to remain over the southern part of the country. Observed slight warm Sea Surface Temperatures (SSTs) over the south west Indian Ocean were likely triggered weak formation of low pressure system. Over southeast Atlantic Ocean (near Angola coast), SSTs were warm and this condition was likely to cause low level weak westerly wind flow and hence less contribution to moisture flux from Congo forests to some parts of the county.

RAINFALL PERFORMANCE DURING FEBRUARY 1 - 10, 2020

The weather system contributed to enhanced rain over most areas of the country mainly in unimodal sector. In figure below, the Significant amount of rainfall ranging from 51 mm to 150 mm was recorded in most areas over the unimodal regime (southern, southwestern highlands, and weastern regions). However, some parts of northeastern highlands such as Manyara region received less than 25 mm of rainfall. Either few spots of rainfall more than 250 mm observed over Ruvuma, Mbeya, Morogoro and Iringa regions.

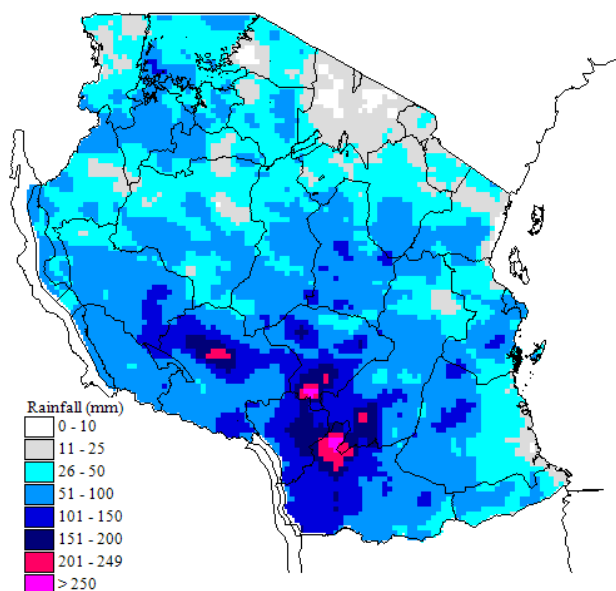


Figure 1: Rainfall total for the period of February 1 - 10, 2020.

AGROMETEOROLOGICAL SUMMARY DURING FEBRUARY 1 - 10, 2020

In this dekad, there has been presence of adequate soil moisture in most parts of the country. The observed off-seasonal rains over bimodal areas contributed to excessive soil moisture conditions mostly over low land areas which impeded crop development and harvesting of matured crops.

The areas like Kiteto, Lyamungo, and Morogoro farmers were engaged in harvesting of maize and beans while in Dodoma, Singida, Tabora, and Shinyanga regions maize was at ninth leaf and farmers were involved with weeding activities. Elsewhere in Tanga, Mtwara, Mbeya, and Iringa maize was at flowering stage. Some areas of northern coast (Pemba, Unguja, and Morogoro) farmers were engaged in sowing of paddy crop. Either, the

region like Simiyu and Mtwara farmers engaged in weeding of cotton and cleaning of cashew trees respectively. However, in Mbeya and Iringa maize crop were at flowering stage. Land preparation for wheat crop was reported in Mbeya.

HYDROMETEOROLOGICAL CONDITIONS DURING FEBRUARY 1-10, 2020

Water levels in lakes, dams, and river flow discharges over the most part of the country was generally good and likely to improve over the unimodal areas.

EXPECTED SYNOPTIC CONDITIONS DURING FEBRUARY 11-20, 2020

The northern high pressure systems (Azores and Siberian) are expected to continue intensifying while the southern high pressure systems (St. Helena and Mascarene) are expected to relax. This condition expected to allow the ITCZ to remain over the southern part of the country. Slight warm SSTs over the south West Indian Ocean are expected to trigger weak formation of low pressure system. Over southeast Atlantic Ocean (near Angola coast) the SSTs are expected to be neutral to slightly warm, this situation is likely to cause low level weak westerly wind flow and hence less contribution to moisture flux from Congo forests to some parts of the county.

EXPECTED WEATHER CONDITIONS DURING FEBRUARY 11 - 20, 2020

Areas over southwestern highlands (Rukwa, Songwe, Mbeya, Njombe and Iringa regions), southern coast (Mtwara and Lindi regions), and southern (Ruvuma and southern part of Morogoro regions) are expected to feature thundery showers with short periods of strong winds over some areas. The Lake Victoria basin (Kagera, Geita, Shinyanga, Mwanza, Simiyu and Mara regions) are expected to feature isolated thunderstorms over few areas.

Over northeastern highlands (Arusha, Manyara and Kilimanjaro regions) and northern coast (Tanga, northern part of Morogoro,

Pwani and Dar es Salaam regions together with isles of Unguja and Pemba) are expected to feature rain showers over few areas especially during the first half of these ten days. A few areas over central regions (Dodoma and Singida) are expected to experience thundery showers.

EXPECTED AGROMETEOROLOGICAL OUTLOOK AND ADVISORY DURING FEBRUARY 11-20, 2020

Expected rains, are likely to improve soil moisture conditions mainly over unimodal regime and northern coast. Farmers over by bimodal regions are advised to take precaution and measures of protecting matured crops against adverse effects of ongoing off seasonal rains. In some area where farmers are engage with harvesting and drying of matured crops are advised to take appropriate measure of protecting crops against to expected excessive soil moisture.

Farmers, fishers, and livestock keepers are advised to seek more advice from agriculture extension officers and use meteorological update issued by TMA.

EXPECTED HYDROMETEOROLOGICAL CONDITIONS DURING FEBRUARY 11-20, 2020

Water levels in dams, lakes, and river flow discharges are expected to maintain. Water users are advised to harvest adequate water for the future uses.

Prepared by

TANZANIA METEOROLOGICAL AUTHORITY

3rd Floor - Ubungo Plaza - 388 Morogoro Road.

P.O. Box 3056, 16102 Dar es Salaam, Tel. 255 - (0) 22 - 2460706-8; Fax: 255 - (0) 22 - 2460718 , E-mail: (1) met@meteo.go.tz (2) agromet@meteo.go.tz,

website: www.met@meteo.go.tz UNITED REPUBLIC OF TANZANIA