

AGROMETEOROLOGICAL BULLETIN

Doc No: TEA 3/3/7/2 F-004

Revision No: 1

Effective Date: 01.07.2017

Page No: 1 of 4

Approved by:

**REPORTING PERIOD:
11 – 20 FEBRUARY 2018**



ISSUE No.: 14

SEASON: 2017/18

RELEASED: 26/02/2018

CONTENTS

HIGHLIGHTS	1
CONTENTS	1
RAINFALL SYNOPSIS AND PROGNOSIS	1
RAINFALL AND TEMPERATURES	2
RAINFALL	2
TEMPERATURES	2
MAIZE AND OTHER CROPS.....	3
MAIZE CROP STAGE AND CONDITION..	3
OTHER CROPS	3
CURRENT FARMING ACTIVITY	3
LIVESTOCK AND PASTURES	3
WATER SITUATION	3
MEDIUM-TERM OUTLOOK.....	3
RAINFALL	3
TEMPERATURE.....	3
SOIL MOISTURE	3
WIND SPEED	3

HIGHLIGHTS

- **Much improved rainfall received...**
- **Slight improvement in vegetation**
- **More planting of legumes observed....**
- **Insignificant rainfall forecasted...**
- **Warm to hot temperatures anticipated...**
- **Decrease in soil moisture expected...**

RAINFALL SYNOPSIS AND PROGNOSIS

➤ **SYNOPSIS - PAST TEN DAYS**

Much above average rainfall was recorded in most stations across the country, these was attributed to the coordination of the surface frontal systems with upper trough.

➤ **PROGNOSIS - NEXT TEN DAYS**

The current systems are expected to subside and move away from our region resulting in insignificant rainfall expected in the outlook period.

AGROMETEOROLOGICAL BULLETIN

Doc No: TEA 3/3/7/2 F-004

Revision No: 1

Effective Date: 01.07.2017

Page No: 2 of 4

Approved by:

RAINFALL AND TEMPERATURES

RAINFALL

Much improved rainfall was received during the reporting period. This was above average and almost equivalent to previous season 2016/17 (**Figure 1**).

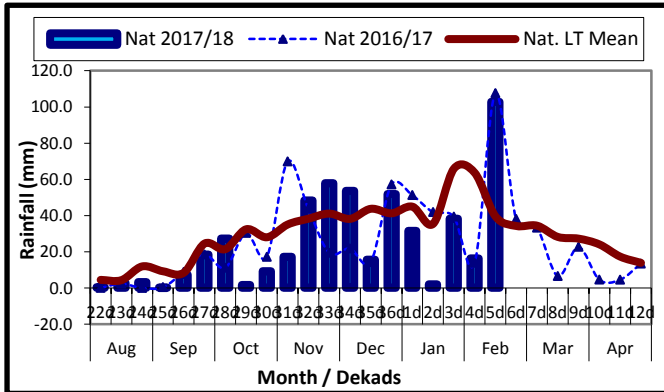
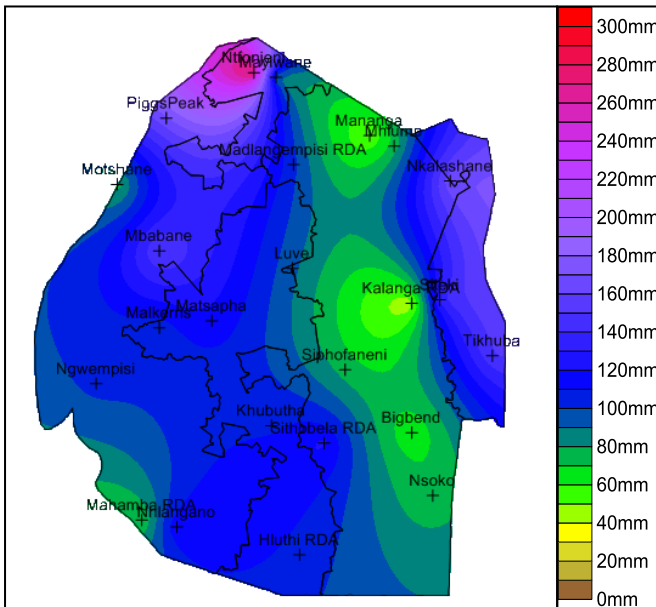


Figure 1: Rainfall distribution as 2nd dekad of February 2018

The highest amount was observed at Ntfontjeni which recorded 278mm while the lowest was Kalanga which recorded 43mm (**Map 1**).



Map 1: Spatial rainfall distribution for 2nd dekad February 2018

The Agroecological zone which received the highest amount was Lubombo Plateau, followed by the Highveld, Lowveld and Middleveld (**Table 1**).

Table 1: Rainfall (mm) for 2nd dekad February 2018

	HV	MV	LV	LP
2016/17	136	96	79	119
Average	50	35	31	42
2017/18	114	70	86	142
Anomaly	63	35	55	100

TEMPERATURES

Temperatures were mostly cold to warm with some hot episodes in some parts during the reporting period (**Figure 2**) and (**Figure 3**).

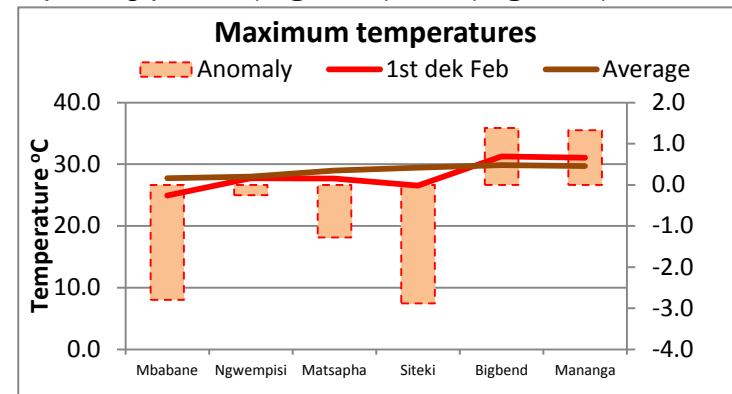


Figure 2: Minimum temperature as 2nd dekad of February 2018

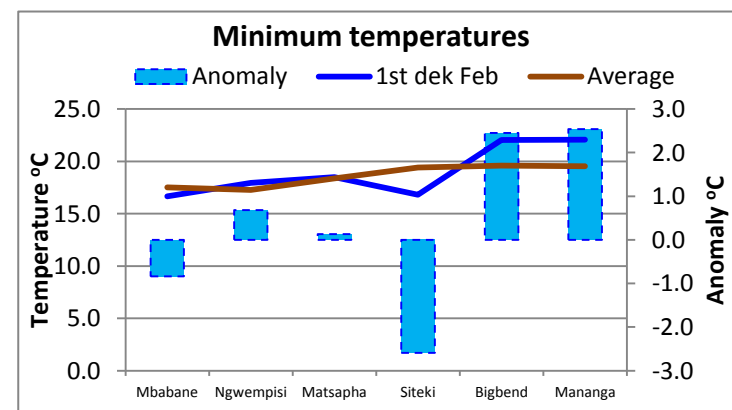


Figure 3: Maximum temperature as 2nd dekad of February 2018

AGROMETEOROLOGICAL BULLETIN

Doc No: TEA 3/3/7/2 F-004

Revision No: 1

Effective Date: 01.07.2017

Page No: 3 of 4

Approved by:

MAIZE AND OTHER CROPS

MAIZE CROP STAGE AND CONDITION

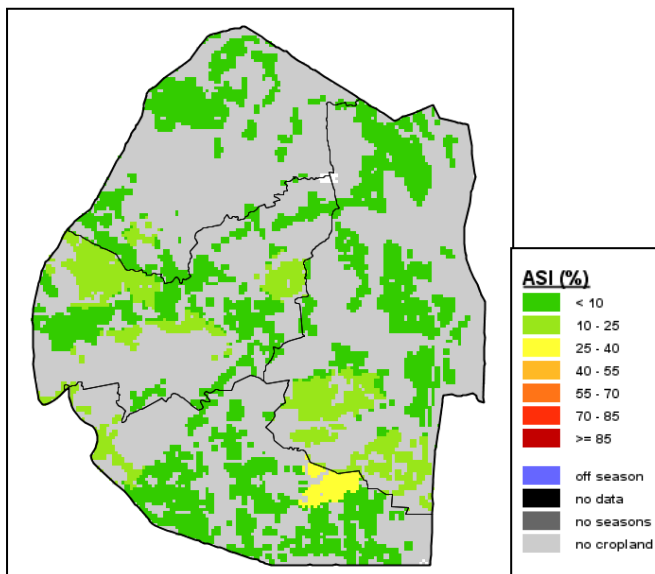
Most maize crops are at late vegetative stage with some at maturity stage. The condition is good in most areas and the crop has picked up due to recent rains. This is depicted by **Map 2** which shows the percentage of cropland affected by drought.

OTHER CROPS

Legumes are reported to be growing well in most areas.

CURRENT FARMING ACTIVITY

Most farmers are busy planting legumes, such as, beans and cowpeas in their fields.



Map 2: Agricultural Stress Index (2nd Dekad February 2018) *Source: FAO-GIEWS*

LIVESTOCK AND PASTURES

Livestock is reported to be in good condition mostly in the Highveld and Middleveld and parts of the Lubombo Plateau, but poor in the Lowveld

WATER SITUATION

Improved levels in some bulk water reservoirs and flows in rivers are observed due to the recent rains.

MEDIUM-TERM OUTLOOK

RAINFALL

Not much rainfall is expected in the outlook period.

TEMPERATURE

Warm to hot temperatures are anticipated in the outlook period.

SOIL MOISTURE

A decrease in soil moisture is expected in the outlook period.

WIND SPEED

Wind will mostly be light breeze ranging between 1-3m/s speed in the reporting period.

AGROMETEOROLOGICAL BULLETIN

Doc No: TEA 3/3/7/2 F-004

Revision No: 1

Effective Date: 01.07.2017

Page No: 4 of 4

Approved by:

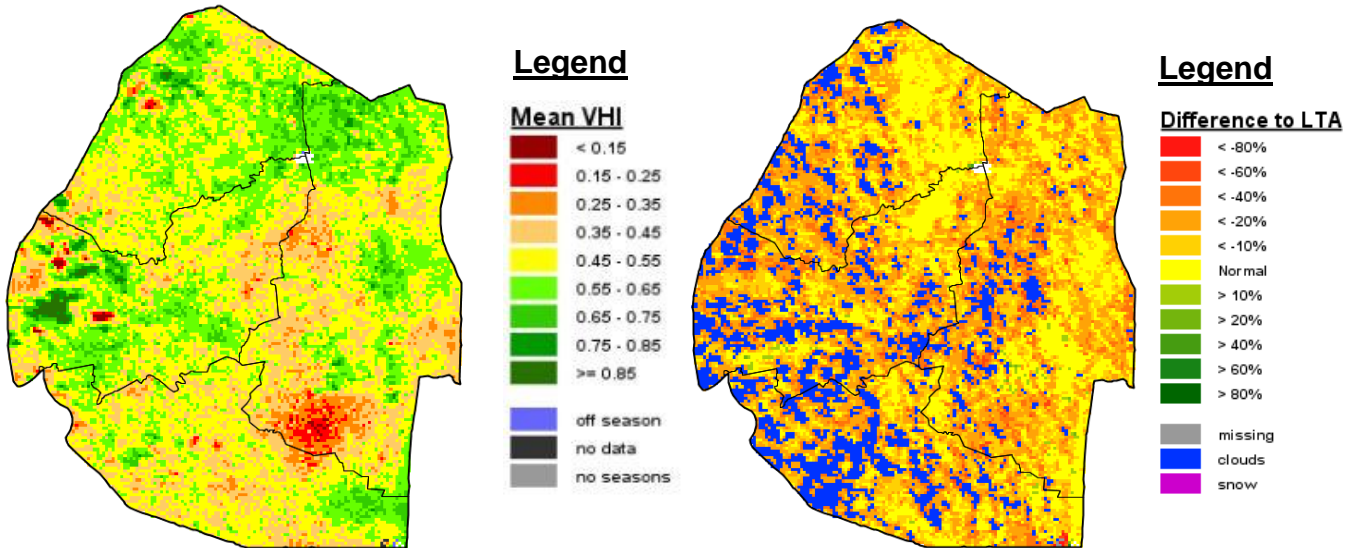


Image 1: Mean Vegetation Health Index image (2nd Dekad February 2018) Source: FAO-GIEWS

Image 2: Anomaly image (2nd Dekad February 2018) Source: FAO-GIEWS