

AGROMETEOROLOGICAL UPDATE



REPORTING PERIOD:
11 – 20 FEBRUARY 2017

ISSUE No.: 14

SEASON: 2016/17

RELEASED: 24/02/2017

CONTENTS

| | |
|-------------------------------------|---|
| HIGHLIGHTS | 1 |
| CONTENTS..... | 1 |
| RAINFALL SYNOPSIS AND PROGNOSIS ... | 1 |
| RAINFALL AND TEMPERATURES | 2 |
| RAINFALL..... | 2 |
| TEMPERATURES | 2 |
| MAIZE AND OTHER CROPS | 3 |
| MAIZE CROP STAGE AND CONDITION . | 3 |
| OTHER CROPS | 3 |
| CURRENT FARMING ACTIVITY | 3 |
| LIVESTOCK AND PASTURES | 3 |
| WATER SITUATION | 4 |
| MEDIUM-TERM OUTLOOK | 4 |
| RAINFALL..... | 4 |
| TEMPERATURE..... | 4 |
| SOIL MOISTURE | 4 |
| WIND SPEED..... | 4 |

HIGHLIGHTS

- **Much improved rainfall received in most parts...**
- **Maize crop continues to be in a good condition in three ecological zones....**
- **Yield prospects show an improvement compared to last season**
- **Average rainfall expected.....**
- **Relatively mild temperatures anticipated.....**
- **Significant improvement in soil moisture expected.....**

RAINFALL SYNOPSIS AND PROGNOSIS

➤ SYNOPSIS - PAST TEN DAYS

The landfall of tropical cyclone Dineo over the southern parts of the SADC region resulted in increased rainfall amounts in the country, especially in the northern parts of the Swaziland.

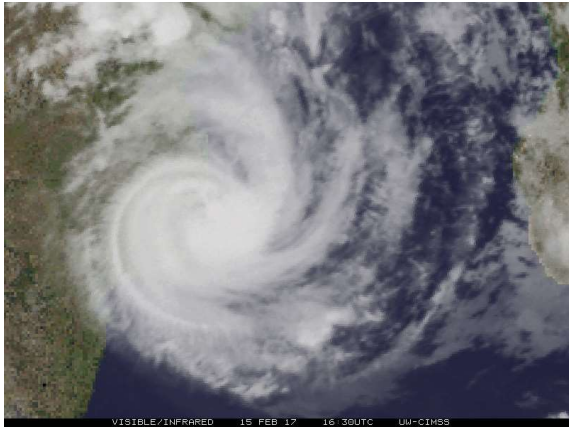
➤ PROGNOSIS - NEXT TEN DAYS

The sustenance of the remnants of the tropical cyclone will result in consistent rainy episodes in some parts of the country during the outlook period.

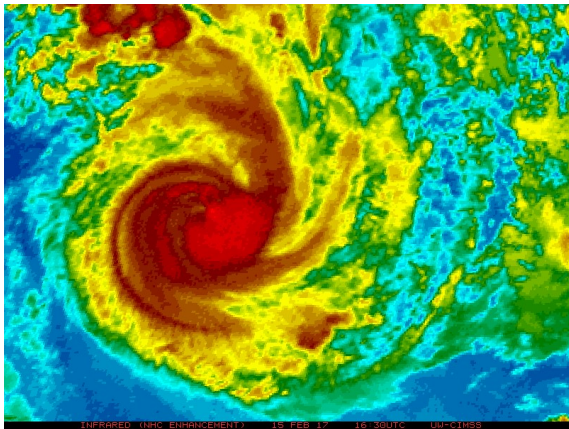
RAINFALL AND TEMPERATURES

RAINFALL

The landfall of tropical cyclone Dineo over the Mozambican channel into Mozambique, northern Swaziland and northern parts of South Africa as shown in the satellite images below (**Pictures 1 & 2**), resulted in above 100mm total most parts of the country.



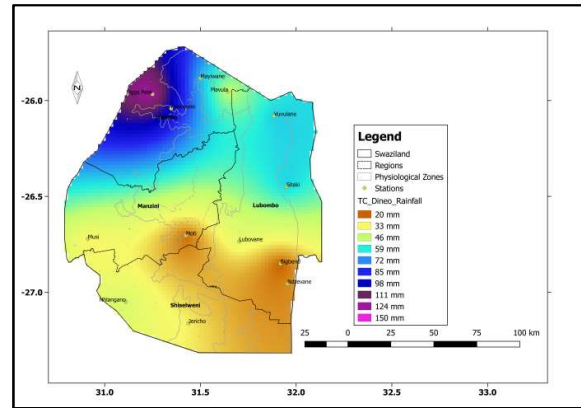
Picture 1: Cyclone Dineo upon making landfall on the 15th February 2017



Picture 2: An RGB image of tropical cyclone Dineo

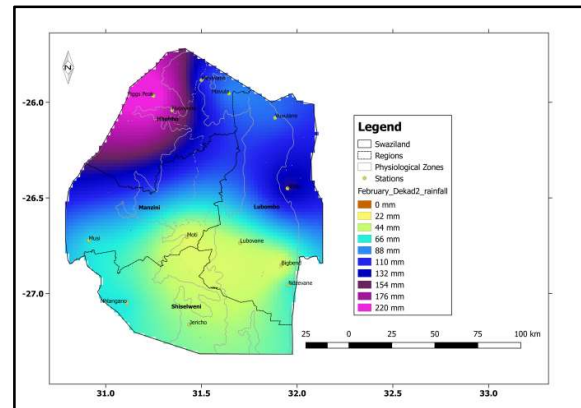
The impact of the cyclone in terms of rainfall in Swaziland was realized on the 16th February 2017 as above 50mm were recorded in 24 hours in most stations in

the northern parts of the country (Map 1 below).



Map 1: Tropical Cyclone Dineo rainfall over Swaziland on 16th February 2017

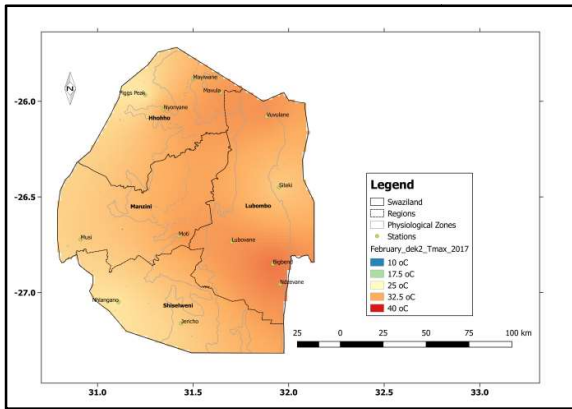
Spatial distribution of the rainfall during the reporting period was dominated mainly by the tropical cyclone as it can be seen in map 2 below.



Map 2: Spatial rainfall distribution for second dekad February 2017

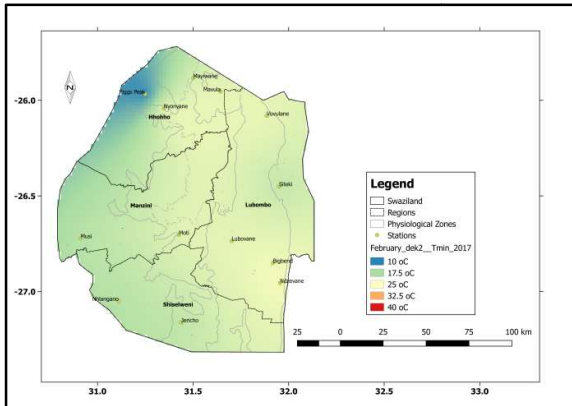
TEMPERATURES

Warmer temperatures were recorded in the Lowveld stations and some in the upper Middleveld (**Map 3**).



Map 3: Maximum temperature for the second dekad of February 2017

Relatively warmer minimum temperatures were recorded most parts of the country, with only the extreme northwestern parts of the country (Map 4).



Map 4: Minimum temperature as first dekad of February 2017

MAIZE AND OTHER CROPS

MAIZE CROP STAGE AND CONDITION

Some of the tasseling (flowering) and grain filling crops in the Lowveld and Lubombo Plateau were exposed to a mild dry spell in the last ten days that resulted in some of the crop being sun scorched (Picture 3).

Yields prospects (Table 1) look good in most agro-ecological zones except the

Lowveld, where an insignificant increase is expected compared to last season due to the December dry spells.

Table 1: Maize yield prospects for the 2016/17 season as of second dekad February 2017

| Agro-zone | WRSI | Yield (t/ha) |
|----------------|-----------|---------------|
| HV | 83 | 1.5015 |
| MV | 83 | 1.3358 |
| LV | 55 | 0.6093 |
| LP | 80 | 1.0621 |
| Summary | 75 | 1.1272 |



Picture 3: Sun scorched maize in the Lowveld due to the recent dry spells of last dekad

OTHER CROPS

Maize intercropped melons and pumpkins ripening.

CURRENT FARMING ACTIVITY

No significant farming activities were noticed during the reporting period.

LIVESTOCK AND PASTURES

Pastures continue to be in good conditions throughout the country, except for some patches in the Lowveld, where elements of overgrazing are stalling the rangeland

regeneration. Livestock are in a good condition in most parts of the country.

WATER SITUATION

Localized flooding was in a number of areas along the northern parts of the country where tropical cyclone Dineo hit the country. Maguga dam was recharged by the cyclone rains to healthy levels, while Hawane dam spillways had to be open thus flooding the Mbuluzi river downstream (Picture 4).



Picture 4: Flooded Mbuluzi River around Pine Valley area in Mbabane

MEDIUM-TERM OUTLOOK

RAINFALL

Chances of rainy episodes during the outlook period are high.

TEMPERATURE

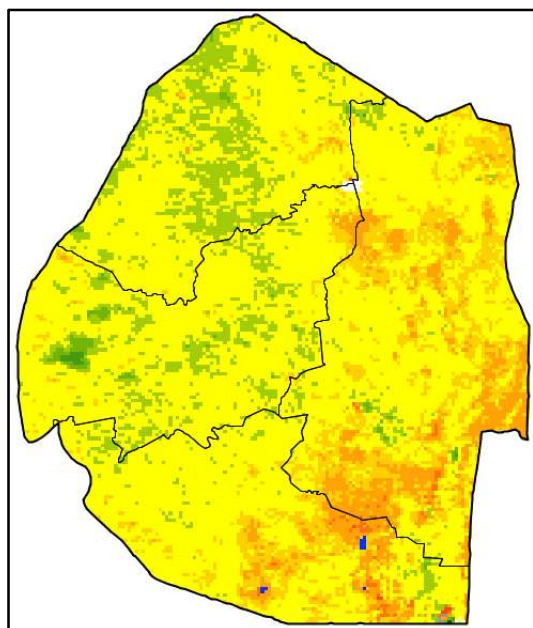
Milder temperatures are going to persist over most parts of the country during the next dekad.

SOIL MOISTURE

Soil moisture to significantly increase in the next ten days.

WIND SPEED

Reduced winds compared to the reporting period in the next dekad.



Legend

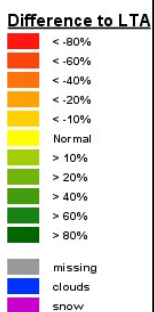
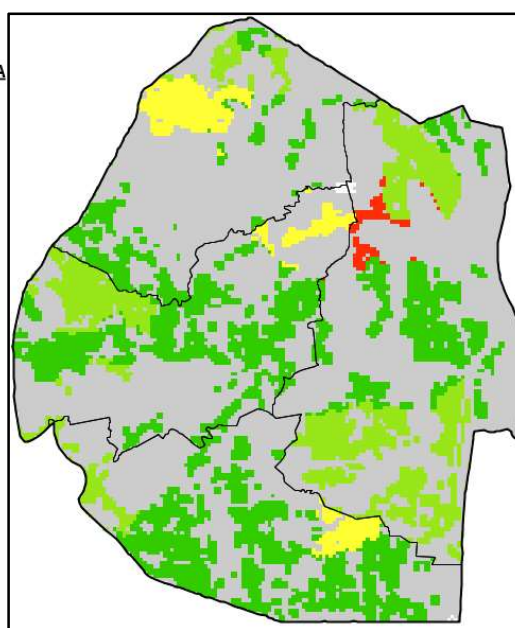


Image 1: Vegetation Health Index image (2nd Dekad February 2017) Source: FAO-GIEWS



Legend

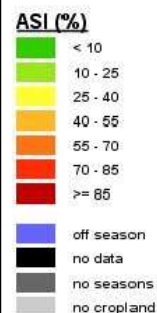


Image 2: Agriculture Stress Index image (2nd Dekad February 2017) Source: FAO-GIEWS