



# LESOTHO METEOROLOGICAL SERVICES

*We are at your service. Re sebelise*



Agro-Met Monthly Update:

August 2008

Date of issue: September 2008

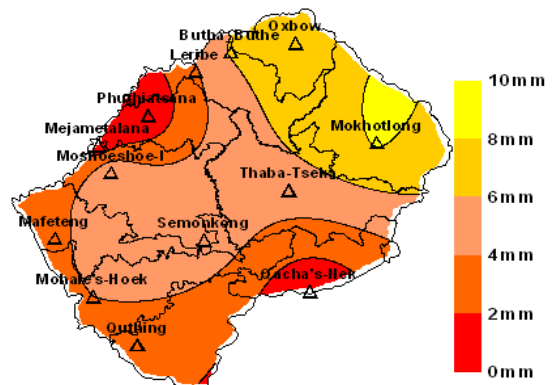
## Highlights

1. Dry weather experienced countrywide
2. Normal mean monthly temperatures experienced
3. Harvesting cereals finished

## Rainfall

### *Monthly Actual Rainfall*

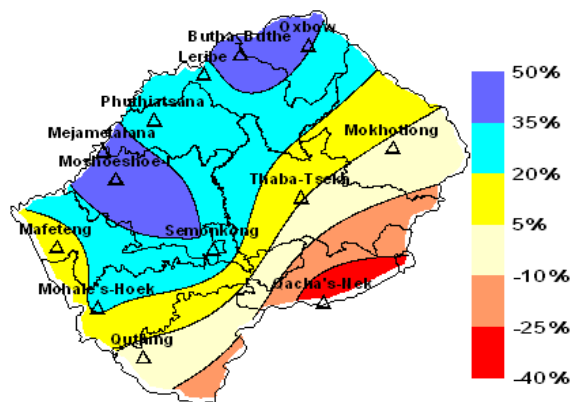
The country recorded below normal monthly rainfall during August 2008. Dry weather conditions continued to persist from the month of July 2008 to August 2008. During the month under review, monthly rainfall was below 10mm countrywide (see Map 1 and Table 1).



Map 1: August 2008 Monthly Rainfall

### *Cumulative Rainfall since May 2008*

August became the second consecutive dry month since May 2008. Cumulative rainfall remains above normal in the western parts of the country, and below normal at places around Qacha's Nek (see Map 2 and Table 2) and normal at other places. It is worth noting that Map 2 depicts accumulated rainfall from the month of May. Most of the rainfall contribution came from the months of May and June which individually registered above normal monthly rainfall.



Map 2: Rainfall % Dep. from normal May-August 08

Agrometeorology Section  
 Lesotho Meteorological Services  
 P.O. Box 14515  
 Maseru 100  
 Lesotho

Tel: +266 22 324374  
 Fax: +266 22 325 057/ 22 350 325  
 E-mail: agrometeorology@lesmet.org.ls

### Temperatures

Monthly mean temperatures were varied from normal to above normal during the month of August 2008. Monthly mean temperatures were above normal along the region involving Quthing, Qacha's Nek and Mokhotlong. Lowest monthly

mean temperature deviation of 1.0°C was at Moshoeshoe 1 while the maximum deviation of 2.2°C was at Quthing (see Table 1).

### Crop Stage and Conditions

Harvesting of cereals is finished. Persisting dry spells which effectively began in July are currently putting winter cropping in danger. Few crops that were planted in winter can not progress in their developments due to dry weather.

Water resources at some places are expected to be strained due to lack of rainfall and increasing temperatures.

### Water and livestock conditions

Lack of soil moisture has not only affected crops, but rangelands and livestock are stressed. High temperatures especially in the eastern parts of the country have increased impacts of dry spells.

### Vegetation monitoring

Map 3 below shows the monthly average SPOT – NDVI imagery. Generally vegetation is low in the lowlands and Senqu river valley, and is at a medium stage in the highlands.

### Weather Outlook (July – September 2008)

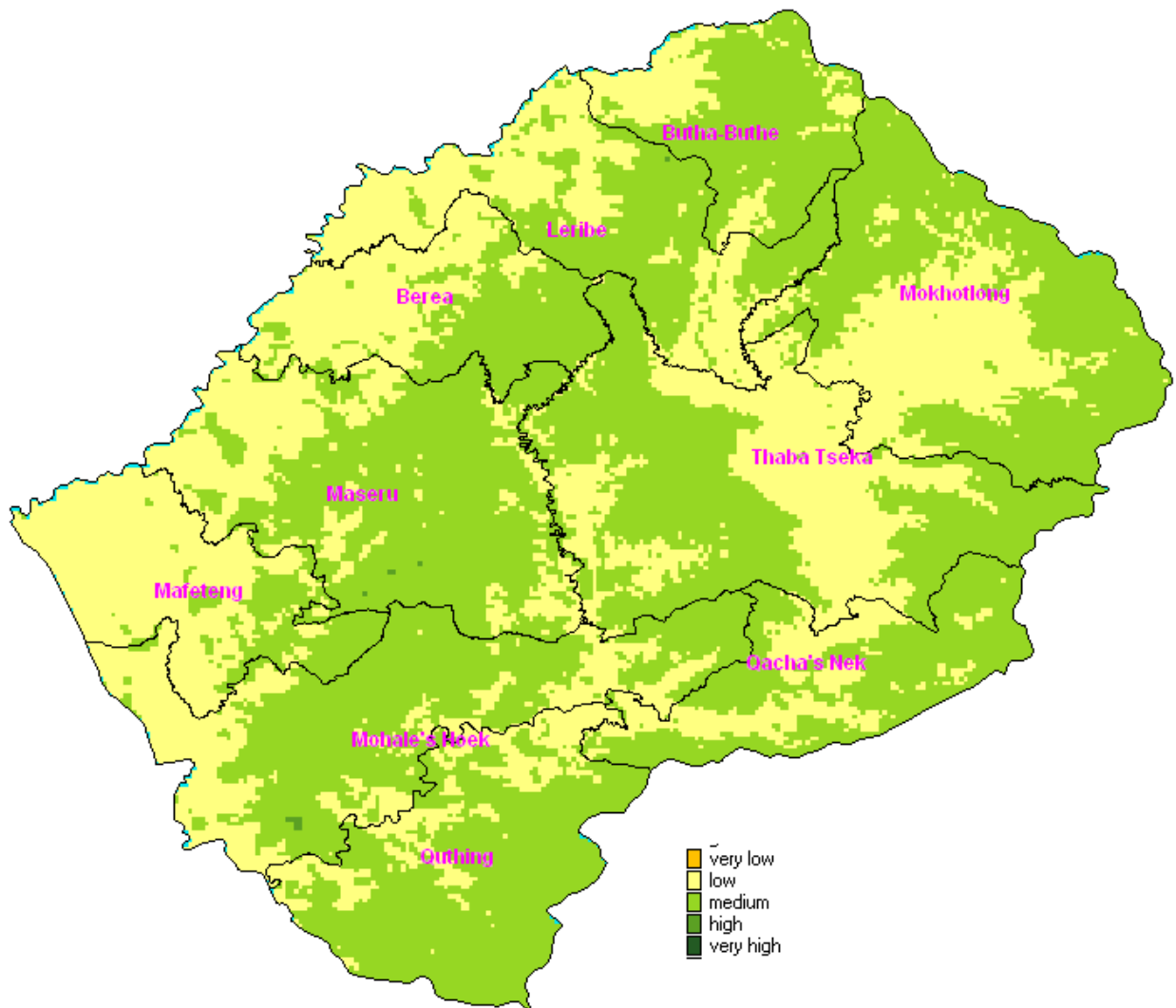
Most parts of Lesotho will receive normal to above-normal rainfall for July to September 2008 season. Most parts of the Lowlands and the southeastern Highlands are forecasted to have above-normal to normal rainfall during July -

September (JAS). Temperatures are expected to remain generally around the normal category.

*REFER TO THE TABLE BELOW FOR A SUMMARY TABLE, AND VEGETATION MAP.*

**Table 1**

Station Name	ALT. (M)	Monthly R/Days	Monthly Rainfall (mm)		Cumulative R/Fall since May 2008			Temperatures		
			Monthly R/Fall	Normal R/Fall	Actual R/Fall	Normal R/Fall	% Dep. from Normal	Monthly Mean Actual	Monthly Mean Normal	Deviation
<b>Butha-Buthe</b>	<b>1770</b>	4	6.2	23.6	104.6	70.3	49	11.0	10.0	1.2
<b>Leribe</b>	<b>1740</b>	*	*	19.5	*	63.2	*	*	10.0	*
<b>Mafeteng</b>	<b>1610</b>	1	3.5	22.4	79.3	72.9	9	12.0	10.0	1.3
<b>Mejametalana</b>	<b>1530</b>	2	0.5	18.4	94.0	64.3	46	12.0	11.0	1.8
<b>Mohale's Hoek</b>	<b>1600</b>	1	4.0	26.3	95.5	78.2	22	13.0	11.0	1.8
<b>Mokhotlong</b>	<b>2200</b>	2	8.2	14.4	40.8	39.9	2	9.8	8.1	1.7
<b>Moshoeshoe 1</b>	<b>1628</b>	3	6.0	23.6	100.0	66.8	50	12.0	11.0	1.0
<b>OxBow</b>	<b>2660</b>	*	*	40.3	*	121	*	*	3.4	*
<b>Phuthiatsana</b>	<b>1750</b>	0	0.0	21.2	83.9	68.5	22	12.0	12.0	0.8
<b>Qacha's Nek</b>	<b>1970</b>	0	0.0	20.3	38.3	62.5	-39	13.0	10.0	2.1
<b>Quthing</b>	<b>1740</b>	1	3.0	26.8	87.6	89.3	-2	13.0	11.0	2.2
<b>Semonkong</b>	<b>2458</b>	1	5.5	26.8	104.7	78.1	34	6.7	5.9	0.8
<b>Thaba-Tseka</b>	<b>2160</b>	1	5.0	21.3	52.2	49.2	6	9.9	8.4	1.5



Map 3: Average SPOT vegetation for the month of August 2008