



TANZANIA METEOROLOGICAL AGENCY



DEKADAL WEATHER REVIEW

No. 27, 2009/10 Cropping Season

May 21-31, 2010

HIGHLIGHTS

- Over bimodal areas, crops were ranging from vegetative to wax ripeness stage.
- Over unimodal rainfall sector most field crops were at full ripeness and harvesting stages, and the state was generally good.

SYNOPTIC SITUATION

During the third dekad of May 2010, the southern hemisphere high pressure systems (St. Helena and Mascarene) continued to intensify while the Siberian high pressure system and the associated Arabian ridge in the northern hemisphere relaxed and retreated northwards thus causing the rain-making mechanism (Inter-Tropical Convergence Zone - ITCZ) to move further northwards over the Great Horn of Africa. The East African Ridge over the country was intensifying significantly thus suppressing rainfall development over the region.

RAINFALL SUMMARY

During the dekad under review rainfall continued to decrease over most areas in the country except for northern coast and northeastern highlands whereby Amani was leading by 262.3 mm followed by Pemba 212.7 mm, Lyamungo 144.2 mm and Zanzibar 125.0 mm which were all above normal as shown in Figure 1 and 2. Other stations recorded less than 100 mm with much of unimodal areas remaining seasonably dry, while over bimodal areas the dryness signifies end of *Masika* rains.

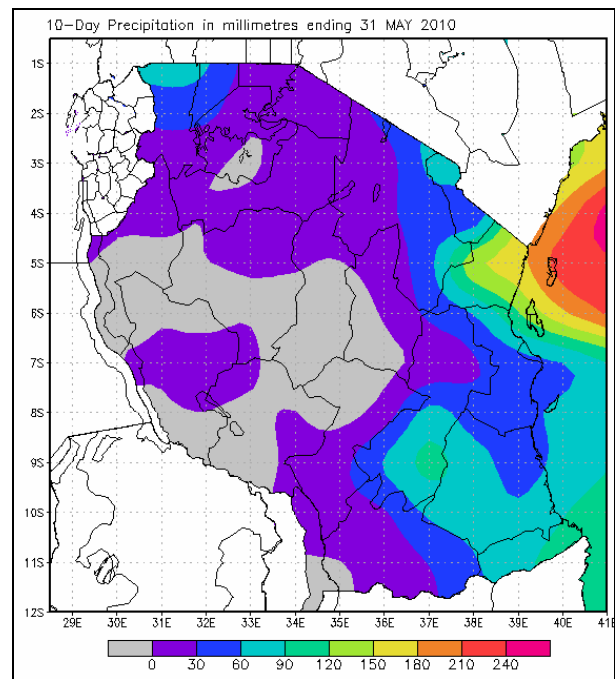


Figure 1: May 21-31, 2010 Rainfall Distribution

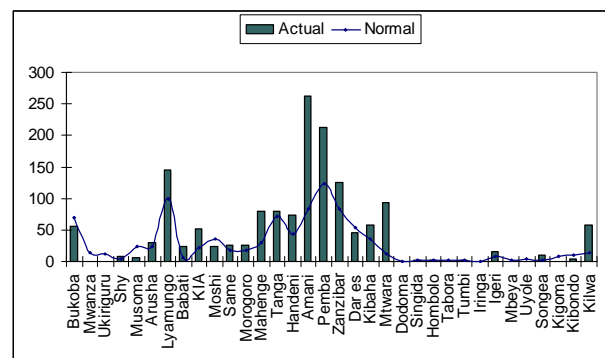


Figure 2: May 21-31, 2010 Rainfall Distribution

IMPACT ASSESSMENT

Agrometeorological and Crop Summary

During the third dekad of May 2010 crops mainly maize, paddy and beans over most areas of bimodal rainfall pattern had reached stages ranging from vegetative to wax ripeness stages. Most crops were generally in good state as observed mainly over the northeastern highlands, despite the extensive dry spell experienced during the previous dekad particularly over some lowland areas of Hai and Same districts, and parts of northern coast (Tanga and Coast regions). As for unimodal areas most crops particularly maize, beans, paddy, sunflower, sorghum and millet were generally at vegetative to harvesting stages and in moderate to good state. The second phase planted beans crop was progressing well at flowering to near ripeness stage and in good state. Paddy crop in moderate state was from flowering to harvesting stage, while wheat crop mainly over southwestern highlands (Mbeya and Njombe areas) was at between vegetative to near tasseling stage and was progressing well. A few areas like Ismani in Iringa (north) experienced poor crop performance due to inadequate soil moisture supply enhanced by earlier cessation of the seasonal rains.

Hydro-meteorological Summary

Water levels in lakes, dams and river flows were maintained during the period, thus water availability for human and industrial use and energy generation purposes has improved.

Environmental Summary

Cool temperatures over most areas in the country have led to comfortable conditions at night although some areas had local variations of high temperatures.

EXPECTED SYNOPTIC SYSTEMS DURING JUNE 1-10, 2010

For the coming dekad, the southern hemisphere high pressure systems (the Mascarene and St. Helena together with the associated East African ridge) are expected to continue intensifying while the Azores and Siberian high pressure systems together with the Arabian ridge in the northern hemisphere are likely to relax allowing the zonal component of the ITCZ to continue moving further northwards over the continent Africa. The wind flow pattern is expected to be southerly to southeasterly.

EXPECTED WEATHER SITUATION DURING JUNE 1-10, 2010

Lake Victoria Basin (Kagera, Shinyanga, Mara and Mwanza regions) is likely to experience a few showers and thunderstorms. Northern coast and hinterland (Dar es Salaam, Morogoro, Tanga and Coastal regions together with the Islands of Unguja and Pemba) are expected to experience occasional rainfall. Southern Coast (Mtwara and Lindi regions): Most areas are expected to experience mainly dry conditions with a few light showers. Northeastern highlands (Arusha, Kilimanjaro and Manyara regions) are expected to experience mainly normal rainfall mainly over high ground. Southwestern highlands (Rukwa, Mbeya and Iringa regions) are expected to experience occasional rainfall mainly over high ground. Southern region (Ruvuma region) and part of Mahenge are expected to experience occasional light rains. Western areas (Tabora and Kigoma regions) are expected to feature mainly dry conditions. However, northern Kigoma is likely to experience occasional showers. Central (Dodoma and Singida regions) are expected to feature dry conditions. Relatively low temperatures are likely during night and early morning hours. Occasionally windy conditions are likely to occur.