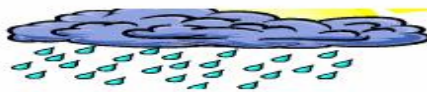




# TANZANIA METEOROLOGICAL AGENCY



## DEKADAL WEATHER REVIEW

No. 22 2006/07 Cropping Season

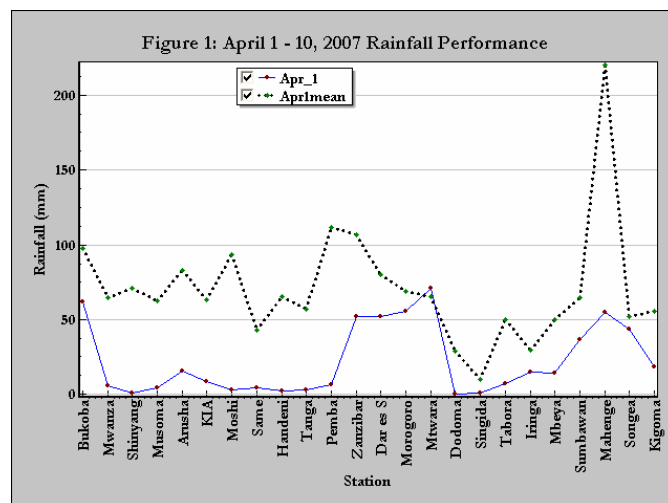
April 1-10, 2007

### SYNOPTIC SITUATION

During the period 1 to 10<sup>th</sup> April, the northern hemisphere systems, the Azores and Arabian anticyclones were relaxed, allowing for northward shift of the position of the Inter-Tropical Convergence Zone (ITCZ). The southern hemisphere systems, the St. Helena and Mascarene anticyclones, and the East African ridge were intense, pushing northwards the zonal arm of the maintained ITCZ. The persistence of the tropical cyclone *Jaya* maintained low level southerly winds over the entire coast.

### RAINFALL SUMMARY

Figure 1 shows that during the first dekad of April 2007 rainfall activities over much of the country decreased whereby the reported 10-day rainfall amounts were less than 50 mm, except for Bukoba (Lake Victoria basin), Zanzibar and Dar es Salaam (northern coast), Mtwara (southern coast), and Mahenge (southern region) where rainfall amounts exceeded 50 mm. The highest rainfall recorded was 70.8 mm at Mtwara followed by Bukoba 61.5 mm, Morogoro 55.5 mm, Mahenge 54.7 mm, Dar es Salaam 52.2 mm, and Zanzibar 51.9 mm. These rains were also below normal as indicated in Figure 1. The long rains (*Masika*) that started early during the first dekad of March have depicted poor distribution over most of bimodal rainfall pattern areas (the Lake Victoria basin, northeastern highlands and northern coast); over most of the eastern Lake Victoria basin and northeastern highlands the rains started late. On the other hand a decrease in seasonal rains over unimodal rainfall regime of the southwestern, central and western areas marked the season drawing to the end.



### IMPACT ASSESSMENT

#### Agrometeorological

Slight decreases in soil moisture levels were observed across the country. Nevertheless, some pocket areas over southern lowlands of Morogoro region continued to register excess soil moisture conditions that impeded good growth/development of crops such as maize and beans currently at the early vegetative stage. Activities over bimodal areas included planting and weeding crops such as maize at the early vegetative stage and paddy at near late vegetative stage generally in poor state.

Paddy at near tasselling stage over lowlands of southern Morogoro region and at early vegetative stage over the coast but at ripeness stage over districts of Nzega (Tabora region), Sumbawanga (Rukwa region), Tunduru (Ruvuma region), Mbeya rural (Mbeya region) and Bahi area (Dodoma region) generally continued to be in moderate state.

The second planted beans crop over several parts of the country like Kasulu, Kibondo, Mpanda, Ngara, Mbulu and Mufindi districts was reported in the

vegetative stage and in good condition. Generally over unimodal areas farm activities were reduced in most fields as crops (maize, sorghum and paddy) approach maturity stage.

Cassava crop at various stages and in good state was reported across the country.

Pasture conditions and water availability for livestock and the wildlife continue to be adequate across the country.

### Hydrometeorological

Water levels in rivers, lakes and dams are good over much of the country.

### Environmental

The country experienced generally warm temperatures and comfortable conditions except for some humid conditions along the coast during daytime.

## EXPECTED SYNOPTIC SYSTEMS DURING APRIL 11 – 20, 2007

During this dekad the tropical cyclone *Jaya* will turn to extra tropical depression, thus allowing southeasterly flow to dominate over the entire coast which condition will increase rainfall activities over northern coast and northeastern areas. The ITCZ is expected to be located over northern Tanzania thereby enhancing rainfall over the areas.

## EXPECTED WEATHER DURING APRIL 11 – 20, 2007

Southern coast, southern region, southwestern highlands, central areas and western areas are expected to feature partly cloudy conditions with rain showers over few areas and sunny periods. Areas over Lake Victoria basin are expected to experience partly cloudy conditions with thundershowers mainly over western areas. Northeastern highlands and northern coast and its hinterlands are expected to feature partly cloudy to cloudy conditions with thundershowers over some areas and sunny intervals.