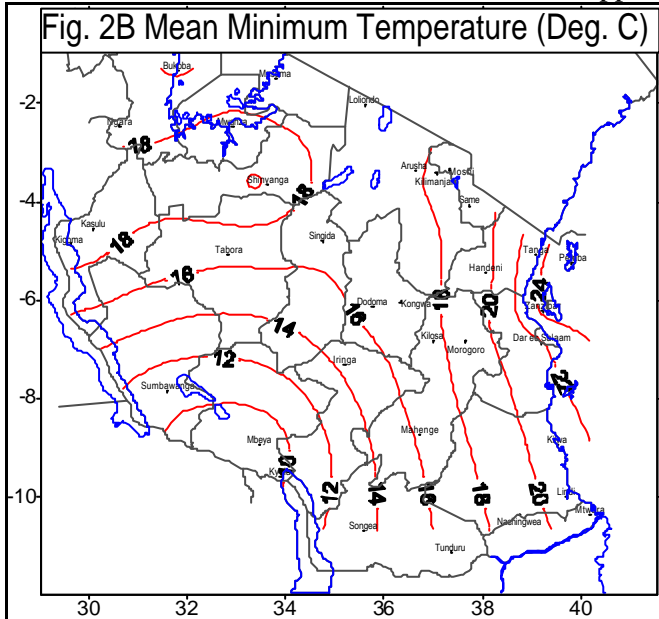


Compared to the situation during April, overall cooler conditions dropped

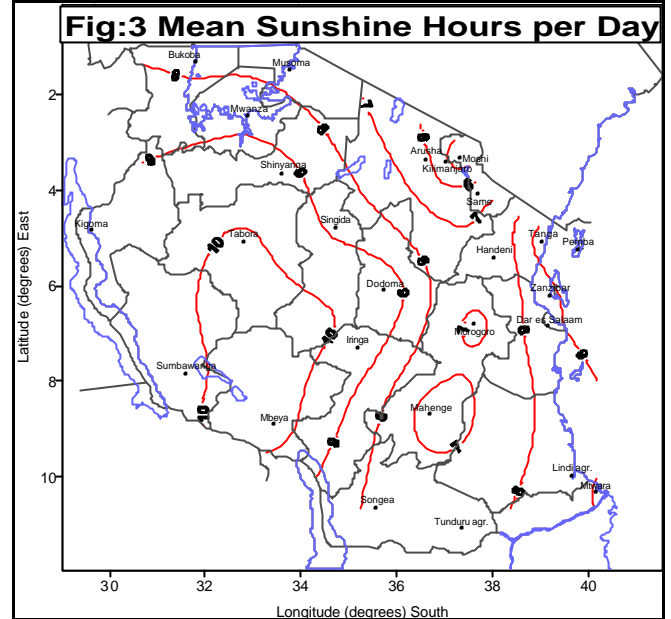


significantly with Mbeya Airport reporting chilly conditions at 8.5°C during May.

SUNSHINE HOURS

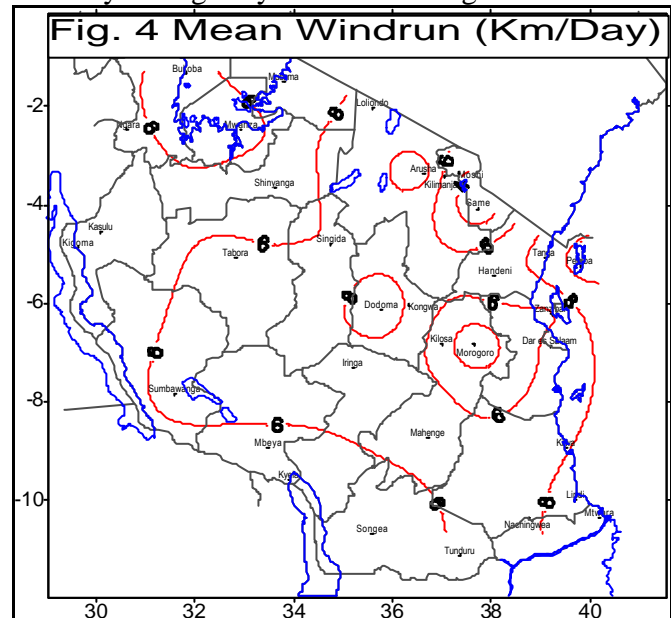
During May mean sunshine hours across the country ranged from about 4 to just above 10 hours/day as shown in Figure 3. Shorter durations of bright sunshine, around 4 hrs/day, were experienced over parts of northeastern areas where cloudy conditions dominated. Maximum bright

sunshine hours, just above 10 hours, were mainly experienced over western, southwestern and central areas where cloud activities have drastically been reduced due to ending of seasonal rains.



MEAN DAILY WINDSPEED

Mean wind run across the country ranged from about 6km/day to a maximum of 9km/day during May as shown in Figure 4.

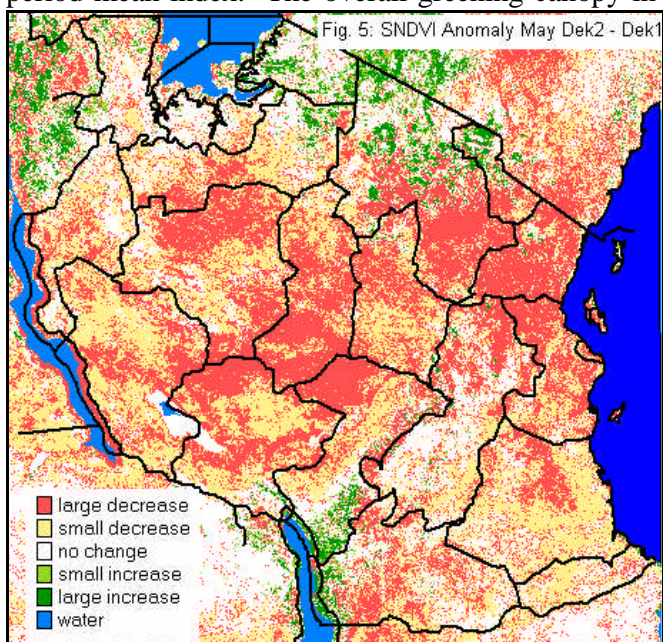


Over the coastal belt there has been a picking up of wind speed to signify continued organization of the seasonal low-level flow of south-easterlies. Minimum speeds appear as pockets on the leeward sides of the Uluguru mountains in Morogoro, Same

and Singida areas sandwiched in between the higher winds highlighted earlier.

SATELLITE INFORMATION

Available satellite information during the month appears as in Figure 5 showing Normalized Difference Vegetation Index (NDVI) anomaly from the Spot satellite depicting NDVI difference between 1st 10day during May and the 2nd 10-day period mean index. The overall greening canopy in



the vegetation till May 20th, largely across the country depicts a decreasing trend in the NDVI anomalies as shown in Figure 5. Northern coastal belt, north-eastern areas and parts of Lake Victoria Basin depicting large decreases in NDVI are areas of concern during this period of the year. Over such areas green vegetation should be peaking from status of maturing crops in the fields. The low NDVI indices locate spread of areas generally featuring extent of drought impact. On the other hand, decreases indicated over central, western and southern areas depict a normal drying nature from generally ripened crops in the fields.

AGROMETEOROLOGY

Farming activities during May have generally consisted of harvesting mature crops over central, western and southern areas. Over bimodal

areas of Lake Victoria Basin, northeastern and northern coastal belt – field crops have started to mature and beans in Kagera in good state are being harvested. Drought condition that persisted during the month has withered field crops especially beans mostly at flowering and maize at late vegetative stage in parts of Arusha, Manyara and Kilimanjaro regions. On the other hand, the low soil moisture profile over southern, southwestern, central and western areas signified the setting in of the dry season.

Moderate to high yields of maize crop is expected from harvests over central, southern, southwestern and western areas. Masika season crops over northern coastal belt, northeastern areas and parts of Lake Victoria Basin, are expected to have only moderate yields as crop growth has been impacted by insufficient soil moisture supply during May. Likewise prospects for paddy yields are gauged at moderate level especially over the coastal belt. Cassava, at various stages from planting to maturity has continued to supply town markets.

HYDROMETEOROLOGY

Rainfall that fell during the month contributed significantly to water levels in rivers and other water reservoirs in some parts of the country. Water levels in rivers and dams for general water supply and electricity generation have improved slightly over the areas receiving rains.

ENVIRONMENTAL

The moderately low wind speeds and the spreading dry conditions (central areas), which prevailed during the month reduced prospects for diseases such as colds, coughs, pneumonia and asthma.

EXPECTED SYNOPTIC SYSTEMS FOR JUNE

The East African ridge will remain intense and maintain low level diffluent flow pattern over the country. The St Helena Anticyclone and The Mascarene anticyclone are expected to remain

intense. The Arabian ridge will weaken while the Azores anticyclone will strengthen.

WEATHER OUTLOOK FOR JUNE

Northeastern highlands and northern coast will have partly cloudy conditions with light rains over few areas and sunny periods. Lake Victoria basin will experience partly cloudy conditions with showers and thunderstorms over few areas and sunny periods. Southwestern highlands, southern coast, central, western and southern areas will have partly cloudy conditions with sunny periods.

Prepared by
TANZANIA METEOROLOGICAL AGENCY
3rd & 4th Floors - Ubungo Plaza Ltd – Morogoro Road.
P.O. Box 3056
Tel. 255 - (0) 22 – 2460706-8 ; Fax: 255 - (0) 22 - 2460718
E-mail: (1) mef@meteo-tz.org (2) agromet_tz@meteo.go.tz
Dar-es-Salaam.UNITED.REPUBLIC.OF.TANZANIA