

AGROMETEOROLOGICAL BULLETIN

Doc No: TEA 3/3/7/2 F-004

Revision No: 1

Effective Date: 01.07.2017

Page No: 1 of 4

Approved by:

**REPORTING PERIOD:
01 – 10 NOVEMBER 2017**



ISSUE No.: 04

SEASON: 2017/18

RELEASED: 15/11/2017

CONTENTS

HIGHLIGHTS	1
CONTENTS	1
RAINFALL SYNOPSIS AND PROGNOSIS	1
RAINFALL AND TEMPERATURES	2
RAINFALL	2
TEMPERATURES	2
MAIZE AND OTHER CROPS.....	3
MAIZE CROP STAGE AND CONDITION..	3
OTHER CROPS	3
CURRENT FARMING ACTIVITY	3
LIVESTOCK AND PASTURES	3
WATER SITUATION	3
MEDIUM-TERM OUTLOOK.....	3
RAINFALL	3
TEMPERATURE.....	3
SOIL MOISTURE	3
WIND SPEED	3

HIGHLIGHTS

- **Below average rainfall received...**
- **Decrease in vegetation**
- **Few farming activity observed....**
- **Slight improvement in rainfall forecasted.....**
- **Warm to hot temperatures anticipated.....**
- **Insignificant improvement in soil moisture expected.....**

RAINFALL SYNOPSIS AND PROGNOSIS

➤ **SYNOPSIS - PAST TEN DAYS**

Below normal rainfall was received throughout the country during the dekad. This drying effect is due to the current positioning of the upper level convergence over the country.

➤ **PROGNOSIS - NEXT TEN DAYS**

The current positioning of the upper high over our region is expected to shift during the outlook period; thus increasing the probability of improved rainfall in some parts of the country in the next dekad.

AGROMETEOROLOGICAL BULLETIN

Doc No: TEA 3/3/7/2 F-004

Revision No: 1

Effective Date: 01.07.2017

Page No: 2 of 4

Approved by:

RAINFALL AND TEMPERATURES

RAINFALL

Below average rainfall has been prevailing each dekad since the second dekad of October 2017 as even the first dekad of November 2017 received below average rainfall. It is much lower than previous season 2016/17 which performed better (Figure 1).

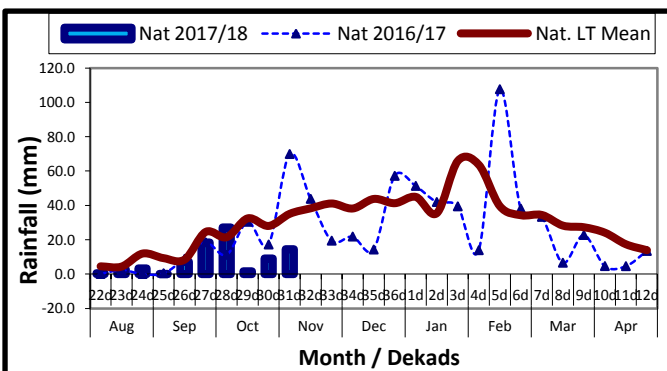
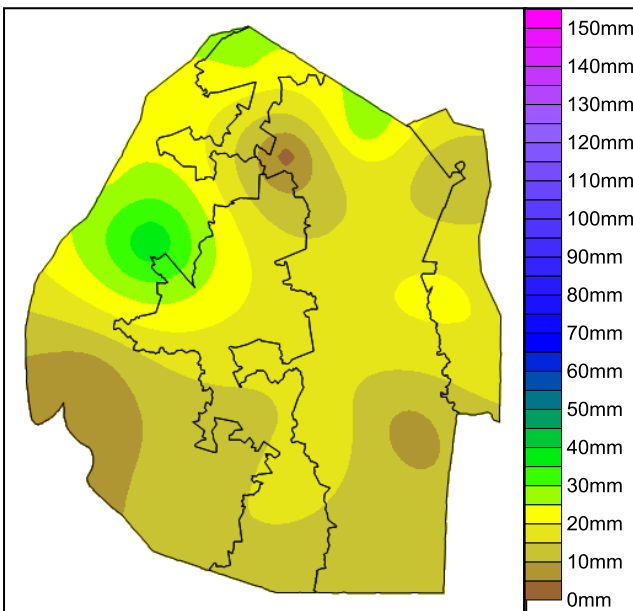


Figure 1: Rainfall distribution as first dekad of November 2017



Map 1: Spatial rainfall distribution for first dekad November 2017

All Agro-ecological zones observed lower amounts of rainfall during the reporting period (Table 1).

Table 1: Rainfall (mm) for 1st dekad November 2017

	HV	MV	LV	LP
2016/17	104	80	49	47
Average	49	35	24	32
2017/18	17	10	12	20
Anomaly	-32	-25	-12	-13

TEMPERATURES

Most reporting stations observed below to average temperatures, with an exception of Bigbend and Mananga which observed above average temperatures (Figure 2) and (Figure 3).

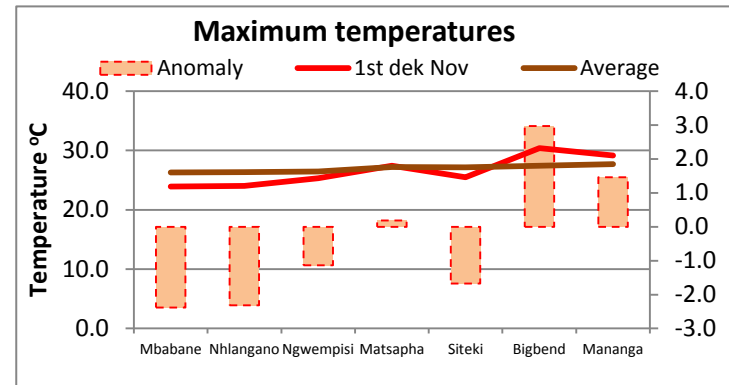


Figure 2: Minimum temperature as first dekad of November 2017

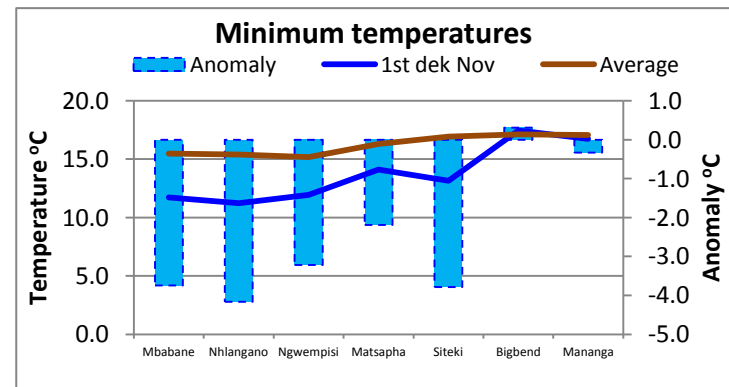


Figure 3: Maximum temperature as first dekad of November 2017

AGROMETEOROLOGICAL BULLETIN

Doc No: TEA 3/3/7/2 F-004

Revision No: 1

Effective Date: 01.07.2017

Page No: 3 of 4

Approved by:

MAIZE AND OTHER CROPS

MAIZE CROP STAGE AND CONDITION

Very few farmers have planted maize and observed to be in germination stage.

OTHER CROPS

No other crops have been observed to have been planted.

CURRENT FARMING ACTIVITY

Some farmers are busy with land preparation activities. However, most are delayed by insignificant soil moisture due to insufficient rains.

LIVESTOCK AND PASTURES

Vegetation shows signs of stress due to insufficient moisture coupled with high temperatures (**Image 1**). This is resulting in a decrease of grass available for livestock which is currently in average condition.

WATER SITUATION

Not much of a change was reported in water condition as most levels in water sources remain satisfactory.

MEDIUM-TERM OUTLOOK

RAINFALL

Slight improvement in rainfall forecasted in the medium term outlook period.

TEMPERATURE

Warm to hot temperatures expected in the medium term outlook period.

SOIL MOISTURE

Insignificant improvement in soil moisture anticipated.

WIND SPEED

Winds will be light to moderate breeze speeds.

Compiled and Issued by: Agrometeorological Unit,

Swaziland Meteorological Service, Ministry of Tourism and Environmental Affairs.

Box 2652, Mbabane, Swaziland. ☎ (+268) 2404 8859 / 2404 6274. Fax: 2404 1530

E-mail: dudu@swazimet.gov.sz

AGROMETEOROLOGICAL BULLETIN

Doc No: TEA 3/3/7/2 F-004

Revision No: 1

Effective Date: 01.07.2017

Page No: 4 of 4

Approved by:

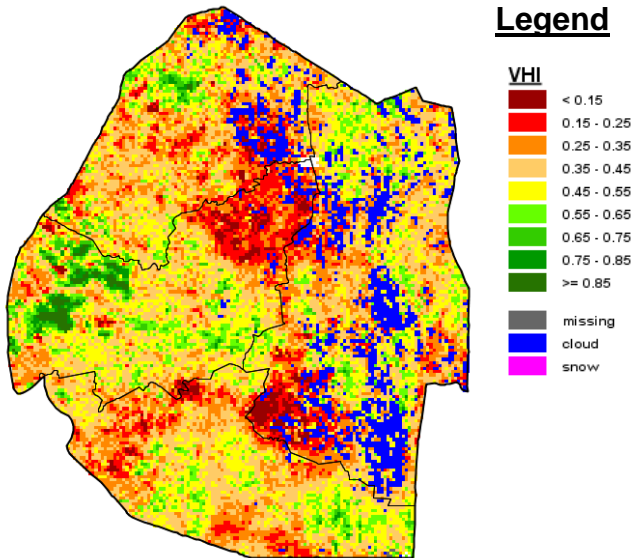


Image 1: Mean Vegetation Health Index image (1st Dekad November 2017) Source: *FAO-GIEWS*

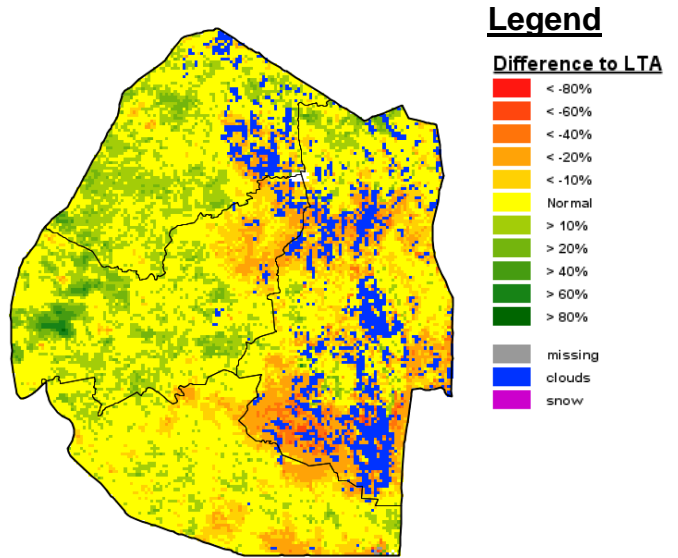


Image 2: Vegetation Anomaly image (1st Dekad November 2017) Source: *FAO-GIEWS*