



10-Day Rainfall & Agromet Bulletin

Department of Meteorological Services



Period: 11- 20 April 2004

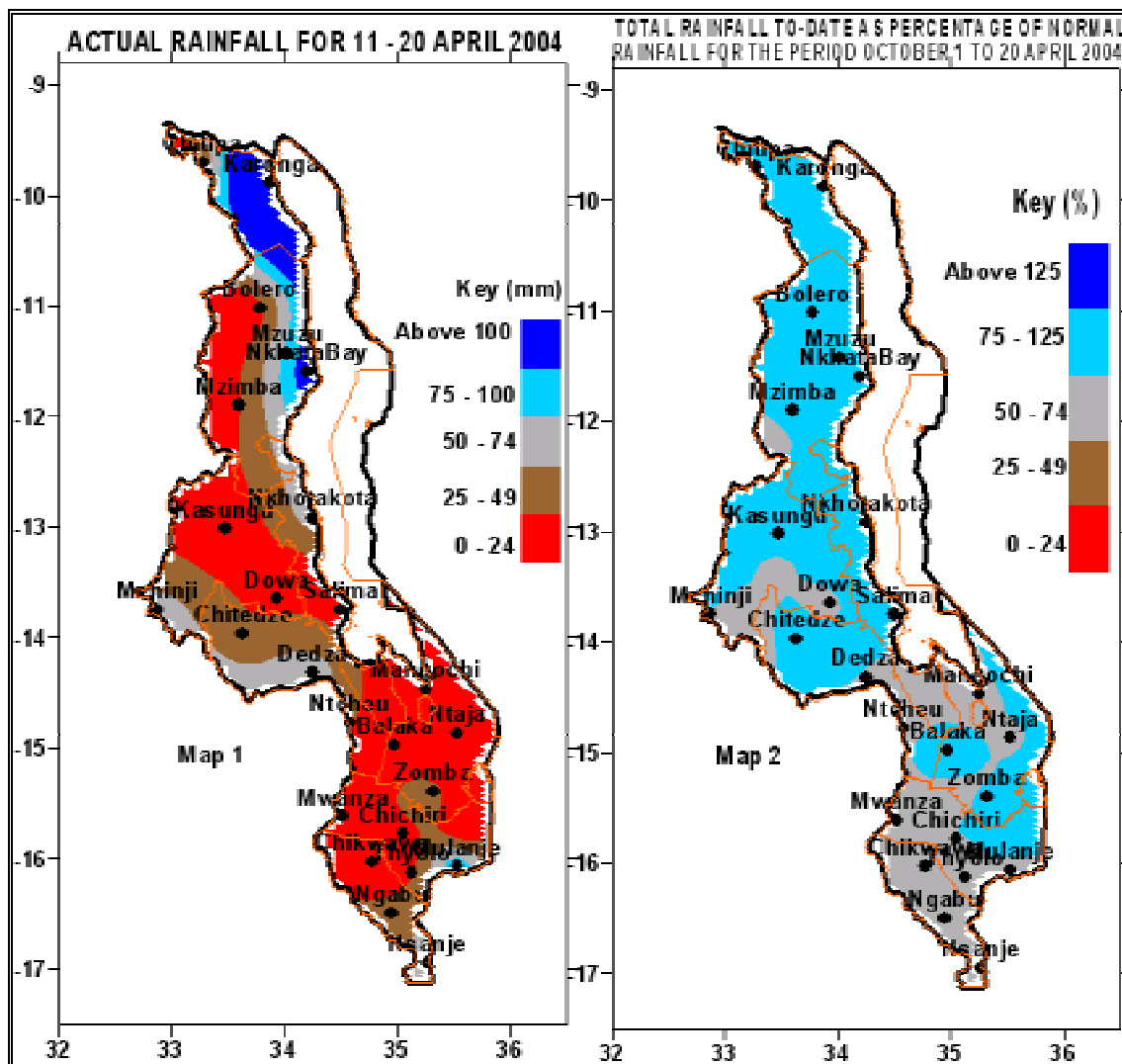
Season: 2003/2004

Issue No.20

Release date: 23 April 2004

HIGHLIGHTS

- High rainfall shifts to extreme northern parts...
- Wet weather to persist over few areas of Malawi...
- Centre and north experiences normal cumulative rainfall ...
- Harvesting of maize gains momentum...



1. WEATHER SUMMARY**1.1 RAINFALL**

During the period 11 to 20 April 2004 most parts of the country received light amount of rainfall with some areas registering nil rainfall throughout the period. High rainfall in excess of 130mm shifted to parts of northern lakeshore areas as rainfall amounts diminished over most parts of the country. Karonga Met with 268mm reported the highest, followed by Nkhata Bay Met (139mm).

Cumulative rainfall performance shows that a normal rainfall season has been achieved over northern and central regions of Malawi where by 20th April most areas had received between 75 and 125% of the expected cumulative rainfall amounts. However, in the southern region, cumulative rainfall performance had been mixed. Most areas had received below normal cumulative rainfall (below 75% of the expected rainfall) amounts except over some parts of Zomba, Balaka and Machinga districts where normal cumulative rainfall amounts (between 75 and 125% of the expected rainfall) had been experienced (Table1 and Map2).

1.2 MEAN AIR TEMPERATURE

Warm to hot temperatures have been maintained over Malawi. Mean daily maximum temperatures ranged from 24°C at Mzuzu, to 32°C at Ngabu. Mean daily minimum temperatures ranged from 13°C to 21°C, with lowest values recorded at Kasungu. The highest absolute temperature was still registered at Ngabu (34°C) while the lowest absolute temperature (11°C) was reported at Kasungu on 12th April 2004.

1.3 AVERAGE DAILY WIND SPEEDS

Average daily wind speeds across the country remained light and variable. The highest average daily wind speed was 2.5m/s (9Km/hr) and this was registered at Nkhotakota along the lakeshore.

1.4 MEAN RELATIVE HUMIDITY

Mean daily relative humidity values showed slight decrease over most parts of Malawi. This was due to return of relative dry air as the rainfall season comes to an end. Mean daily relative humidity

values ranged from 59% at Monkey Bay to 84% over Dedza.

1.5 MEAN SUNSHINE HOURS

Daily hours of bright sunshine improved slightly in most areas due to less cloudy skies that prevailed over the country. Most areas registered mean daily sunshine hours of more than 8 hours during the period.

2. AGROMETEOROLOGICAL ASSESSMENTS

In the second 10-days of April the rainfall activity over Malawi showed signs of subsiding signifying the end of rainfall season. Relatively dry weather returned to most parts of the country. This facilitated drying and harvesting of matured crops. Maize crop was generally at maturity and drying stage and is needed for the crop to dry properly. Reports indicate that harvesting of early planted maize crop was gaining momentum in all the three regions.

Moderate to heavy rains received over some parts of the country particularly northern lakeshore areas supported growth and development of roots and tuber crops. However, on the other hand if wet weather persists up to end of April then drying and harvesting of matured crops particularly maize will be disturbed and field losses due to rotting might increase.

2. FORECAST FOR 21 –30 APRIL 2004

Current atmospheric patterns indicate that the main rain belt will be confined to East Africa. The high pressure area over the Indian Ocean is expected to intensify and maintain fairly moist air from the Indian Ocean into Malawi with the last days of April. Therefore expect locally cloudy conditions with light to moderate rainfall to persist over Malawi.

TABLE 1: DEKADAL RAINFALL FOR SELECTED STATIONS FOR
DEKAD 2 OF APRIL 2004: PERIOD 11 - 20

STATION NAME	DEKADAL TOTAL RAINFALL mm	DEKADAL NORMAL mm	TOTAL TO DATE mm	NORMAL TO DATE mm	TOTAL	RAINY DAYS ≥ 0.3 mm
					TODATE AS % NORMAL	
SOUTHERN REGION						
Blantyre Old Town Hall	0.0	18.6	591.5	1055.5	56	0
Chancellor College	12.2	26.2	1098.3	1380.0	80	2
Chichiri Met.	12.2	21.1	793.8	1053.7	75	4
Chileka Airport	17.6	16.9	578.0	874.6	66	2
Lujeri Tea Estate	64.7	70.2	1179.0	1920.7	61	6
Mangochi Met.	0.5	9.2	471.1	817.3	58	1
Mimosa Met.	25.3	51.3	740.7	1401.9	53	3
Monkey Bay Met.	11.2	8.5	581.9	912.7	64	2
Mulanje Boma	108.9	63.0	1070.9	1577.4	68	4
Namiasi Agric	10.9	3.3	255.7	789.5	32	1
Naminjiwa Agric	0.0	11.5	905.3	925.9	98	0
Nchalo Sucoma	12.2	18.0	374.6	668.2	56	2
Ngabu Met.	42.1	17.4	512.1	755.3	68	4
Ntaja Met.	0.5	16.0	621.9	881.6	71	1
Satemwa Tea Est.	16.5	43.5	769.2	1261.8	61	5
Toleza Farm	0.0	12.9	747.0	831.4	90	0
Thyolo Boma	16.0	32.3	573.6	1123.7	51	1
Thyolo Met	19.2	30.7	665.5	1119.9	59	7
Zomba RTC	47.3	22.2	1028	1190.7	86	7
CENTRAL REGION						
Dedza Met	68.3	18.3	677.9	926.2	73	1
Dowa Agric	19.8	0.0	546.4	862.1	63	1
Dwangwa Sugar Corp.	59.6	74.6	1272.0	1358.4	94	3
L.I.A. Met.	21.9	3.5	658.0	823.7	80	2
Kasungu Met	4.5	0.8	812.9	840.7	97	1
Mchinji Boma	68.8	22.5	767.8	1027.0	75	4
Nkhotakota Met	67.8	61.3	1277.0	1429.5	89	4
Ntchisi Boma	18.8	17.0	1064.3	862.2	123	2
Salima Met	12.0	38.6	1110.8	1247.2	89	2
NORTHERN REGION						
Bolero Met	10.1	12.5	665.2	723.5	92	2
Chitipa Met	16.1	16.7	880.2	970.2	91	2
Karonga Met.	268.0	69.2	1180.7	1015.7	116	10
Mzimba Met	22.3	14.8	905.2	874.9	103	3
Mzuzu Met.	81.6	67.0	980.5	1124.9	87	8
Nkhata Bay Met.	139.0	91.1	1201.3	1490.8	81	7

**TABLE 2: AGROMETEOROLOGICAL PARAMETERS
FOR DEKAD 2 OF APRIL 2004**

STATION	MAX TEMP (°C)	MIN TEMP (°C)	ABS MAX (°C)	ABS MIN (°C)	WIND SPEED m/s	RH %
BOLERO	27.3	17.1	29.2	15.2	1.0	73
CHICHIRI	25.8	16.5	29.2	14.5	0.9	70
CHILEKA	26.8	18.1	29.5	11.5	2.8	76
NTAJA	28.3	19.7	30.5	16.9	1.8	72
CHITIPA	26.0	17.5	29.2	16.6	2.2	81
DEDZA	22.6	14.6	24.5	11.5	1.2	84
KASUNGU	27.3	12.7	29.1	10.5	1.3	75
KARONGA	29.3	21.7	30.5	20.5	1.2	79
L I A	26.7	15.4	28.4	11.5	1.8	79
MANGOCHI	31.2	21.0	33.4	19.3	1.3	69
MIMOSA	28.5	17.8	31.5	15.5	1.2	65
MONKEY BAY	30.1	21.4	31.5	19.5	1.6	59
MZIMBA	26.0	16.4	28.5	15.8	1.3	76
MZUZU	24.2	16.5	26.6	15.5	1.8	85
NGABU	31.8	21.0	34.0	18.5	1.1	77
NKHATA BAY	29.1	20.3	31.5	19.2	1.0	80
NKHOTAKOTA	28.5	21.1	30.0	19.4	2.5	74
SALIMA	29.3	21.3	31.2	20.9	2.2	70
THYOLO	26.1	17.6	29.7	15.2	0.9	82

Glossary of some terms on this table

- RH = Relative Humidity
- Mean Temperature of the day = (Max of the day + Min of the same day) / 2
- ABS Max (Min) = Absolute Maximum (minimum) is the highest (lowest) of maximum (minimum) temperatures observed for a given number of days (calendar month) of a specified period of months (years).