



LESOTHO METEOROLOGICAL SERVICES
(LEKALA LA TSA BOLEPI)



Agrometeorological Update

Period: 11 - 20 November 2014

Issue No.:2/18

Release Date: 24/11/2014

Season: 2014/15

<u>Contents</u>	<u>Page</u>
Moisture and Heat status1	
RAINFALL SITUATION ...1	
TEMPERATURES1	
CROP STAGE AND CONDITIONS1	
Rangelands and Livestock .1	
Rangeland Conditions1	
Livestock Conditions1	
Outlook for 18 - 28 November 2014	1

Highlights

- Above average rain continue to fall in most parts of the country
- Below average temperatures experienced countrywide
- Rangelands continue to improve
- Ploughing and planting continues across the country
- Maize, pumpkin and beans wilting at Quthing and Mokhotlong.

The Director
Lesotho Meteorological Services
Applications Section
P.O. Box 14515
Maseru 100, Lesotho

TEL: (+266) 22324374
FAX: (+266) 22325057/22350325
E-mail: agrometeorology@lesmet.org.ls
<http://www.lesmet.org.ls>

MOISTURE AND HEAT STATUS

RAINFALL SITUATION

The second dekad of November received above average rainfall; however it was lower when compared to the previous season's dekad of the same month (Figure 1).

National Rainfall Analysis

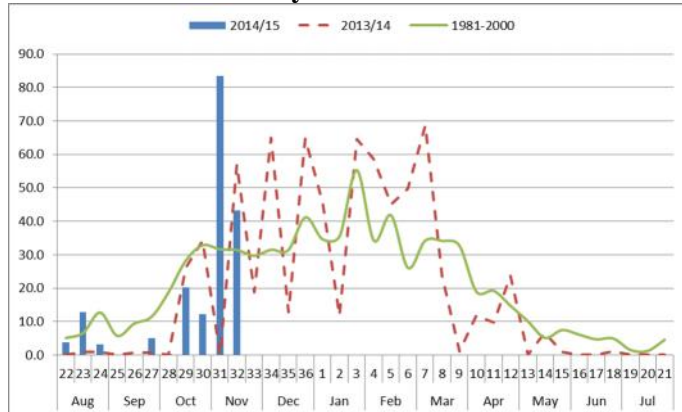


Figure 1: Seasonal rainfall distribution as of 2nd dekad November 2014

Most places had 2 rainy days except for Oxbow and Thaba-Tseka which reported 3 rainy days (*Error! Reference source not found.*).

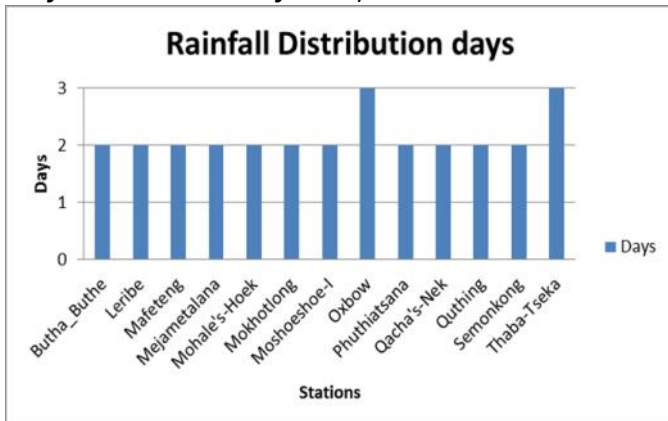
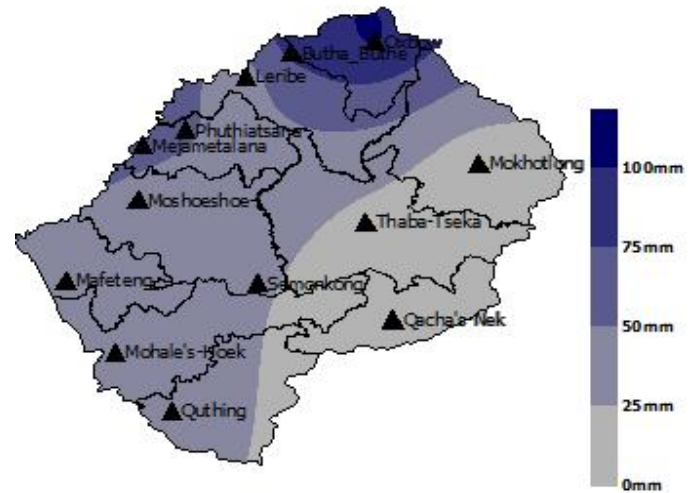


Figure 2: Rainy days during 11 - 20 November 2014

Oxbow recorded the highest rainfall amount of 102mm. Other areas (Thab-Tseka, Mokhotlong, Semonkong and Qacha's Nek) received lowest rainfall amounts ranging from 7mm-25mm. Leribe, Mejametalana and Phuthiatsana recorded rainfall amounts ranging between 50mm – 75mm of rainfall

and the remaining parts of the country received 25mm – 50mm . (*Error! Reference source not found.*)



Map 1: Rainfall distribution for 11 - 20 November 2014

Rainfall for the second dekad was above normal by 40% with most contribution on the national total being that of Oxbow station (*Error! Reference source not found.*).

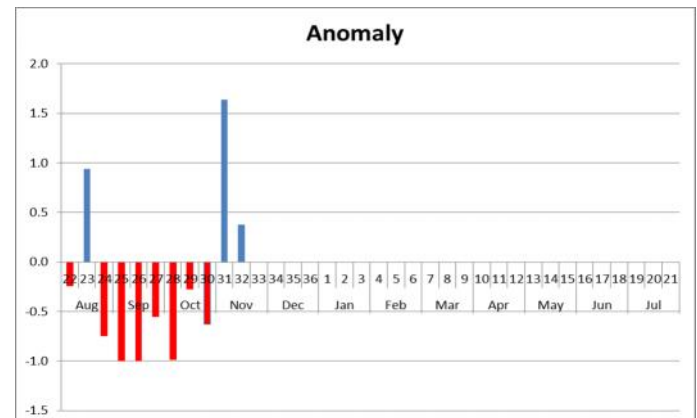


Figure 3: Percentage departure from normal as of 2nd dekad November 2014

November rainfall so far has been above the long-term average as depicted by the anomaly chart above, where most of the dekads prior to November were largely below the long-term average save for the second dekad of August 2014.

TEMPERATURES

Temperatures remained normal over the country (See Table 1). The highest average temperature of 22.60C was

recorded at Mohale’s Hoek and lowest average of 3.20C was recorded at Oxbow.

Table 1: Temperatures (°C) for second Dekad of November 2014

STATION	Temps	Obs	Mean	Anomaly
Butha Buthe	Max	21.0	24.0	-3.0
	Min	10.7	12.0	-1.3
Leribe	Max	21.7	25.3	-3.6
	Min	9.6	11.4	-1.8
Mafeteng	Max	21.3	25.0	-3.7
	Min	7.8	11.3	-3.5
Mejametalana	Max	21.6	26.4	-4.8
	Min	10.2	12.1	-1.9
Mohales Hoek	Max	22.6	26.0	-3.4
	Min	10.4	12.0	-1.6
Mokhotlong	Max	19.9	22.8	-2.9
	Min	7.6	8.7	-1.1
Moshoeshoe 1	Max	21.1	25.6	-4.5
	Min	9.1	12.6	-3.5
Oxbow	Max	13.7	16.5	-2.8
	Min	3.2	4.8	-1.6
Phuthiatsane	Max	NR	26.1	NR
	Min	9.6	12.8	-3.2
Qachas Nek	Max	20.4	22.8	-2.4
	Min	7.6	10.2	-2.6
Quthing	Max	21.3	25.3	-4.0
	Min	9.5	13.2	-3.7
Semonkong	Max	17.0	20.5	-3.5
	Min	4.5	6.5	-2.0
Thaba Tseka	Max	19.5	22.1	-2.6
	Min	6.9	8.9	-2.0

CROP STATUS

CROP STAGE AND CONDITIONS

Mountains, Senqu River Valley

Maize Crop Stage and Condition

Occurrence of early frost on the 16th and 17th negatively impacted and destroyed beans, pumpkin and maize in Mokhotlong and Quthing.

Current Farming Activity

Mountains

There is a continuation of ploughing and planting in the remaining fields. Weeding is taking place at the fields where crops are at third leaf.

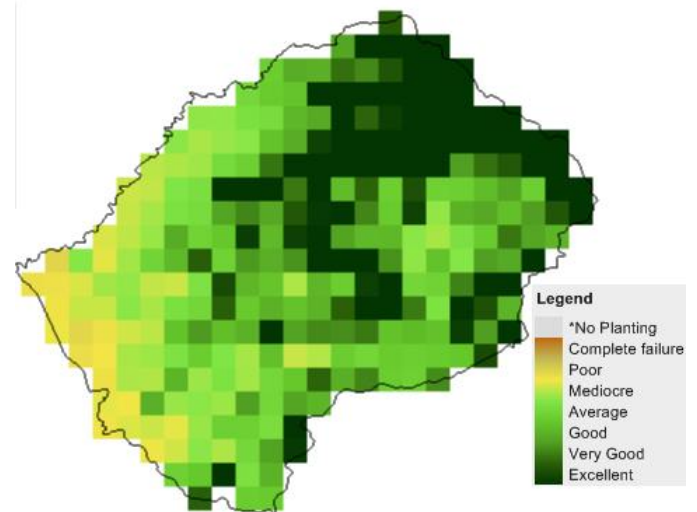
Lowlands, Foothills and Sengu River Valley

Ploughing and planting activities are continuing at most areas under these agro-ecological zones.

RANGELANDS AND LIVESTOCK

RANGELAND CONDITIONS

Rangelands continued to catch up and improve as good rains also continued. (Map. 2)



Map.2: Vegetation cover as at the end of second dekad of November 2014

LIVESTOCK CONDITION

There is a reported outbreak of Antrax in a few districts as a result of the recent heavy rains which were preceded by a dry winter season.



Figure 4: Maize planting has started at other areas



Figure 5: Fields Ploughing in most parts of the country

OUTLOOK FOR 25 NOVEMBER – 03 DECEMBER 2014

Rainfall

Good rains are still anticipated although there is a likelihood they will be less than in the previous dekad.

Temperature

Normal to below normal temperatures expected

Soil Moisture

Stable soil moisture anticipated

CONTRIBUTORS, PARTNERS AND SOURCES OF INFORMATION

This bulletin is issued in support of the efforts by the Integrated National Early Warning System (INEWS)'s Agriculture and Food Security Sector Early Warning System who role is to provide Lesotho's current agronomic and meteorological developments to users, stakeholders, government authorities and international organizations during the farming season.

The Agriculture and Food Security Early Warning System is currently made-up of Prime Minister's Office (DMA and FNCO), Ministry of Agriculture and Food Security (Crop and Livestock Services), Ministry of Energy, Meteorology and Water Affairs (LMS), Ministry of Trade, Industry, Cooperative and Marketing, Ministry of Planning (BoS), FAO, WFP and some NGOs.