



KMD

AGROMETEOROLOGICAL BULLETIN

KENYA METEOROLOGICAL DEPARTMENT

Dekad 03; 21- 31 January, 2010

Issue No. 03 / 2010,

Season: DJF

HIGHLIGHTS

- During the 3rd dekad, moderate rainfall was received over the Western and Nyanza provinces with Kisumu, Kisii and Kakamega recording 19.8, 8.1 and 4.4 mm respectively. The Coastal region was dry throughout the dekad. Central Province and Nairobi area also experienced dry weather. The Eastern and North Eastern regions experienced dry weather condition except Moyale which received 1.1mm of rainfall (Fig 1&2.)
- Day time temperatures relatively increased nationally with Wajir, Garissa, Lodwar and Mandera reporting 37.3, 37.1, 37.0 and 37.0 deg. Celsius respectively (Fig 2&3).
- Night temperatures significantly decreased during the dekad with Nyahururu, Narok, Eldoret Airport, Kabarak and Nyeri reporting dekadal mean minimums of 6.2, 8.3, 8.5, 8.5 and 9.3 deg Celsius respectively. (Figs 3&4).

CROP AND WEATHER REVIEW FOR DEKAD 03; 21 – 31 JANUARY 2010

Central Province and Nairobi Area:

Maize crop is doing well even though there is moisture stress in some areas. In Muranga district, there are reports of armyworms that are destroying crops thus reducing the expected yield. In Nairobi region crops are being affected by a long spell of dry weather. (Fig 1-2).

Eastern Province:

In Machakos, Makueni and Kitui districts, the weather was sunny throughout the dekad. Maize crop is in ripening stage. In Meru and Embu the maize crop is towards ripening stage.

Coast Province:

Coastal area reported dry weather over the dekad (Fig 1&2). In Lamu maize crop is withering due to moisture stress. Cashewnuts are being destroyed by hungry baboons.

North Eastern Province:

Sunny conditions were experienced in the region (Mandera, Moyale, Wajir and Garissa) during the dekad (Figs.1-4). As a result, pasture and general vegetation started to degenerate

as can be seen in Figure 5 depicting the Normalised Difference Vegetation Index (NDVI) for the country.

Western Province:

Moderate rainfall was experienced over several places in this region during the dekad. There are a lot of activities on the farms as farmers are preparing for the next planting season.

Nyanza and Central Rift Valley:

Moderate rainfall was experienced over most places in this region (Kisumu, Nyamira, Kisii, and Kericho) during the dekad. Harvesting of maize in Kisii is almost complete, while in Kisumu maize harvesting is complete and farmers have started preparing their land for the next planting season. (Figs.1&2).

Northern and Southern Rift Valley:

North western Rift Valley (Lodwar, Lokitaung) experienced dry conditions during the dekad. The pastoral regions of Southern Rift Valley (Narok, Kajiado, Mara) received nil rainfall (Figs.1 &2). As a result, there was general decline/degeneration of pasture and vegetation as can be seen in Figure 5 (Normalised Difference Vegetation Index (NDVI) for the country).

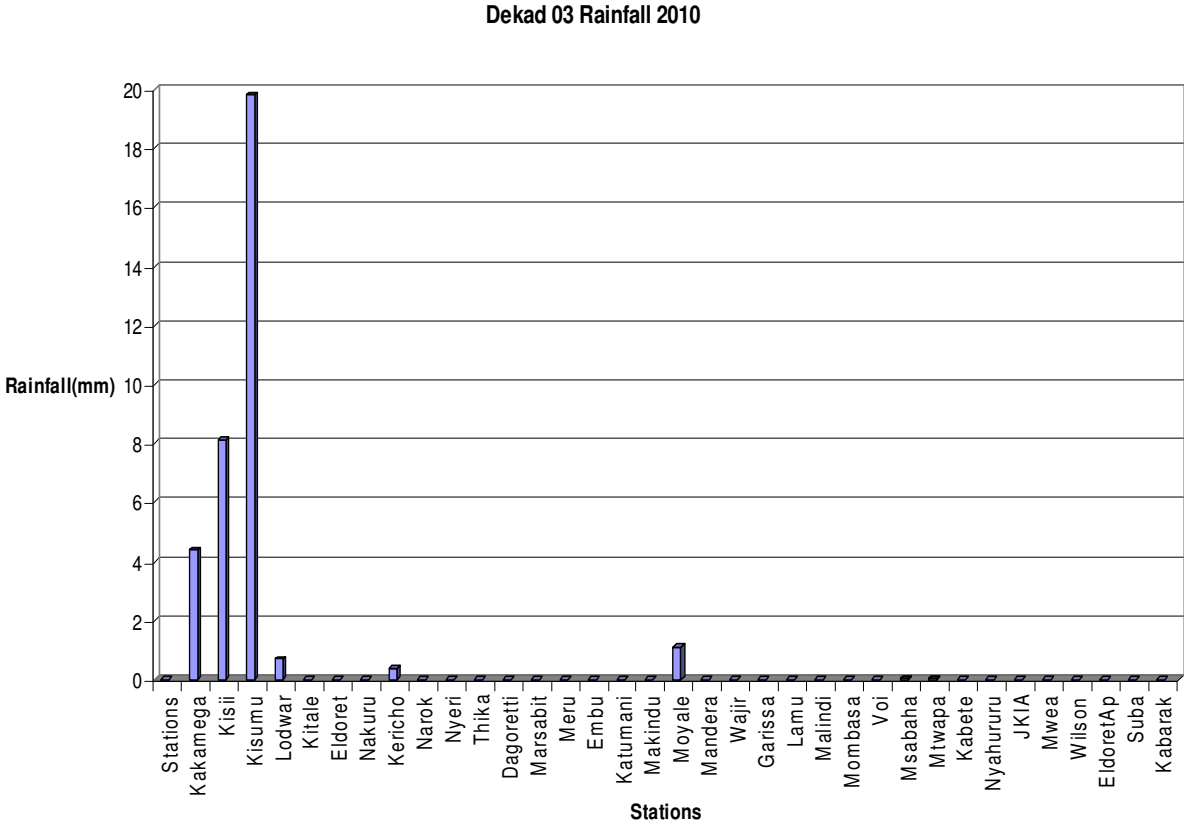


Fig. 1: Dekad 03, 2010; Actual Rainfall

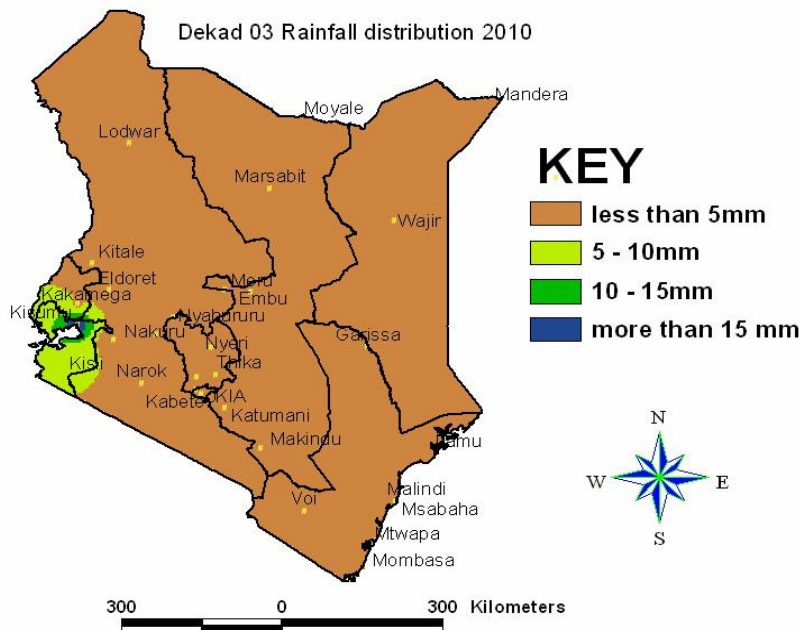


Fig. 2: Dekad 03, 2010; Rainfall distribution.

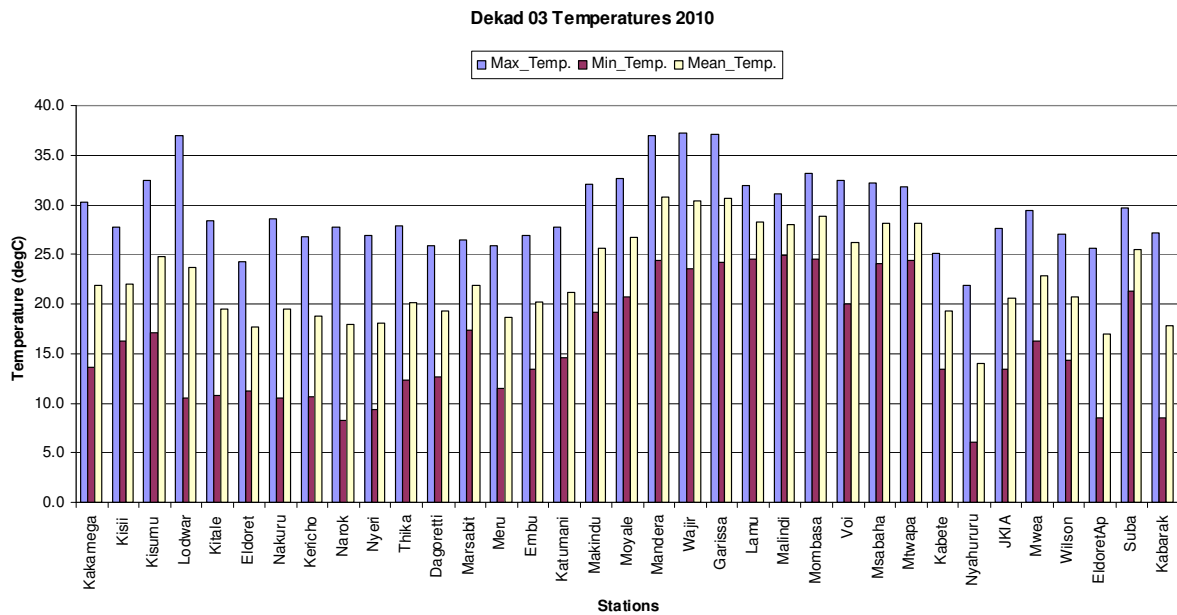


Fig 3: Dekad 03, 2010; Mean Temperature (deg. Celsius)

Dekad 04, 2010; Mean Temperature Distribution

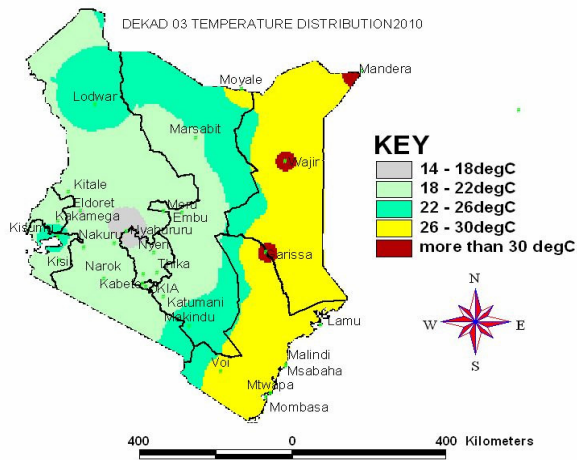
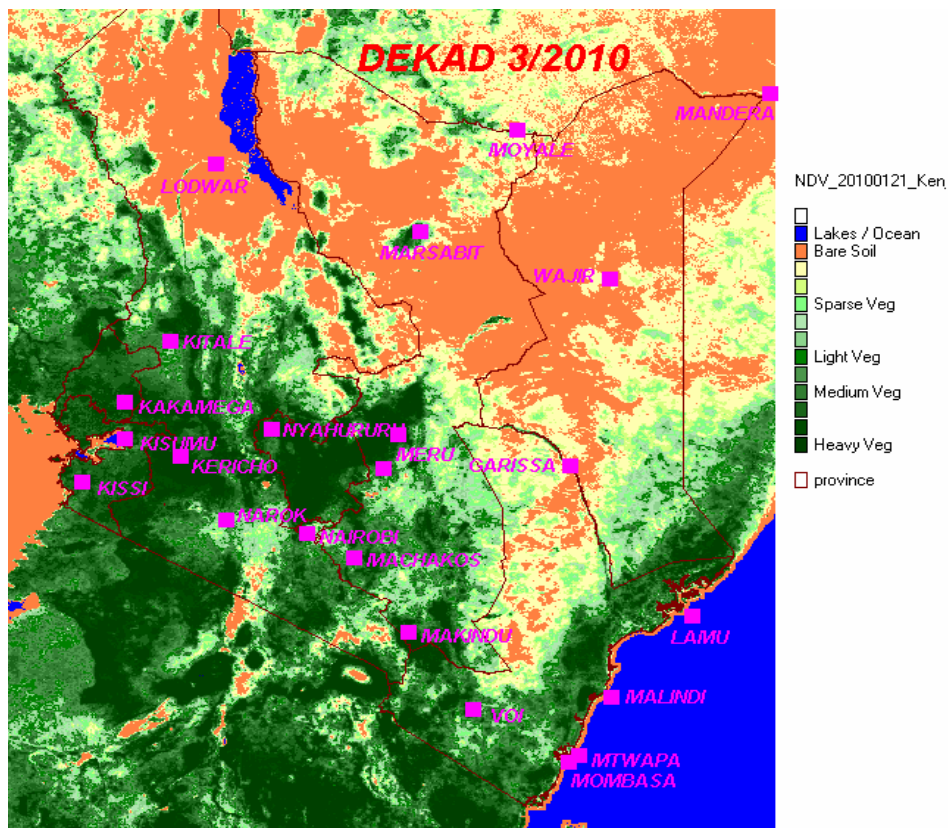


Fig 5: Dekad 03, 2010; Normalized Difference Vegetation Index (NDVI)



EXPECTED WEATHER AND CROP CONDITIONS DURING THE NEXT 10 DAYS (01 –10 FEBRUARY, 2010)

- ✦ During the next 10 days, the western regions are expected to experience sunny weather. No expected weather impact on crops as most have been harvested.
- ✦ Nyanza and Central Rift Valley are expected to experience sunny conditions throughout the dekad with low rainfall in few places in the next 10 days. Harvesting of maize is complete in the region.
- ✦ Central Highlands, Nairobi area and its environs, will experience sunny weather during the next dekad. This will continue to benefit the maize ripening in Nyeri and Thika.
- ✦ Eastern Province districts and its environs are expected to experience sunny conditions over the next ten days. Crops are expected to continue doing well in central areas of the province that is Meru and Embu district.
- ✦ The Coastal region rainfall activities are expected in few places especially in Southern parts .Other places will experience sunny conditions. This will impact well in crop performance.

For more advisories and guidance, Contact:

Director,
Kenya Meteorological Department,
Agrometeorological Advisory Services Division,
Dagoretti Corner, Ngong Road,
P.O. Box 30259, 00100 GPO, Nairobi
Tel: +254 (0)20 3867880-7/3876957/3873682
Fax: +254 (0)20 3876955
E-mail: agromet@meteo.go.ke
Website: www.meteo.go.ke

©2010 The Kenya Meteorological Department