



KMD

AGROMETEOROLOGICAL BULLETIN

KENYA METEOROLOGICAL DEPARTMENT

Dekad 36; 21- 31 December, 2009

Issue No. 36/2009, Season: OND

HIGHLIGHTS

- *During the 36th Dekad i.e. 21st – 31st December, 2009, heavy rainfall was received over the Western, Eastern, Nyanza, and parts of Central Rift Valley with Kakamega, Kisii, Kisumu, Kericho, Kitale, Eldoret, and Nakuru recording 104.5, 184.9, 72.1, 99.0, 184.9, 114.3 and 77.8mm respectively. The Coastal regions experienced insignificant rainfall with only Voi, receiving 121.1mm with the other stations which include Lamu, Mombasa, Mtwapa, Msabaha, and Malindi recording Dekadal rainfall totals of 0.0, 12.3, 2.0, 12.3 mm and 0.0 mm respectively. Central Province, experienced moderate to heavy rains with Nyahururu, Nyeri and Thika recording Dekadal rainfall totals of 137.1, 62.6 and 44.0 mm respectively. Nairobi area and its environs experienced heavy rains with Kabete, Dagoretti, Wilson and J.K.I.A recording 84.6, 58.1, 116.2, mm respectively. Eastern region experienced moderate rainfall with Meru, Embu, Marsabit and Machakos recording 37.5, 36.4, 64.3 and 56.0mm respectively. North eastern region experienced insignificant rainfall except Wajir which received 68.9mm of rainfall. (Fig 1&2.)*
- *Day time temperatures relatively decreased due to increased cloud cover over Western, Central Rift Valley, Central Province, Nairobi area and its environs and the Coastal region with Kakamega, Kisumu, Nakuru, Eldoret, Mwea, Nyeri, Meru, Embu, Thika, Dagoretti, Moyale, Makindu and Mombasa recording a Dekadal Mean day Maximum of 26.4, 24.7, 22.6, 27.2, 24.0, 23.1, 24.5, 25.8, 24.1, 29.6, 28.1 and 32.5 deg. Celsius respectively. (Fig 2&3).*
- *Night temperatures relatively remained high over Western and Central Rift Valley, Central Highlands, Nairobi area and its environs during the Dekad with Nyahururu, Narok, Eldoret Airport, Nakuru, Nyeri, Embu, Thika, Kabete and Dagoretti recording a Dekadal mean minimum of 9.9, 12.3, 11.5, 13.6, 14.1, 15.4, 16.0, 14.9 and 15.3 deg Celsius respectively. (Figs 1-4).*

CROP AND WEATHER REVIEW FOR DEKAD 36; 21 – 31 DECEMBER 2009

Central Province and Nairobi Area:

Cool and cloudy mornings with moderate to heavy rainfall over high ground areas were experienced in Central province, Nairobi area and its environs during the Dekad. Beans and maize crops are doing well in Nyeri, Thika and Kabete areas. Heavy rains experienced in Nyahuru leading to excessive soil moisture have adversely affected the harvesting of maize (Fig 1-5).

Eastern Province:

Cool and cloudy mornings with heavy rainfall over high ground areas, was experienced over several places bordering Mt. Kenya (Embu, Runyenjes, Chogoria, Chuka and Meru) during the Dekad. In central areas of the eastern province crops are doing very well although excessive rainfall is destroying bean crops while in south-eastern beans are being harvested. However, the harvesting is being hampered by continued short rains. Most crops in the province are being invaded by army worms.

Coast Province:

Low amounts of rainfall were experienced over few places in Lamu, Malindi, Mtwapa and Msabaha while heavy rainfall was observed in Voi. In Lamu crops are withering due to low rainfall. Baboons are also destroying beans in the fields (Figs.1-5).

North Eastern Province:

Sunny and wet conditions were experienced in the region (Mandera, Moyale, Wajir and Garissa) during the Dekad. (Figs.1-5).

Western Province:

Heavy rainfall was experienced over several places in this region during the Dekad. There are no activities as farmers are waiting for the next planting season.

Nyanza and Central Rift Valley:

Heavy rainfall was experienced over most places in this region (Kisumu, Nyamira, Kisii, Eldoret, Kitale, Kericho) during the Dekad. Harvesting of beans is complete in the region while in Kisumu maize harvesting is in progress. (Figs.1-5).

Northern and Southern Rift Valley:

Northern Rift Valley (Lodwar, Lokitaung) experienced wet conditions during the Dekad. The pastoral regions of Southern Rift Valley (Narok, Kajiado, Mara) experienced heavy rainfall leading to floods causing loss of animals. (Figs.1-5).

DEKADE 36 RAINFALL GRAPH

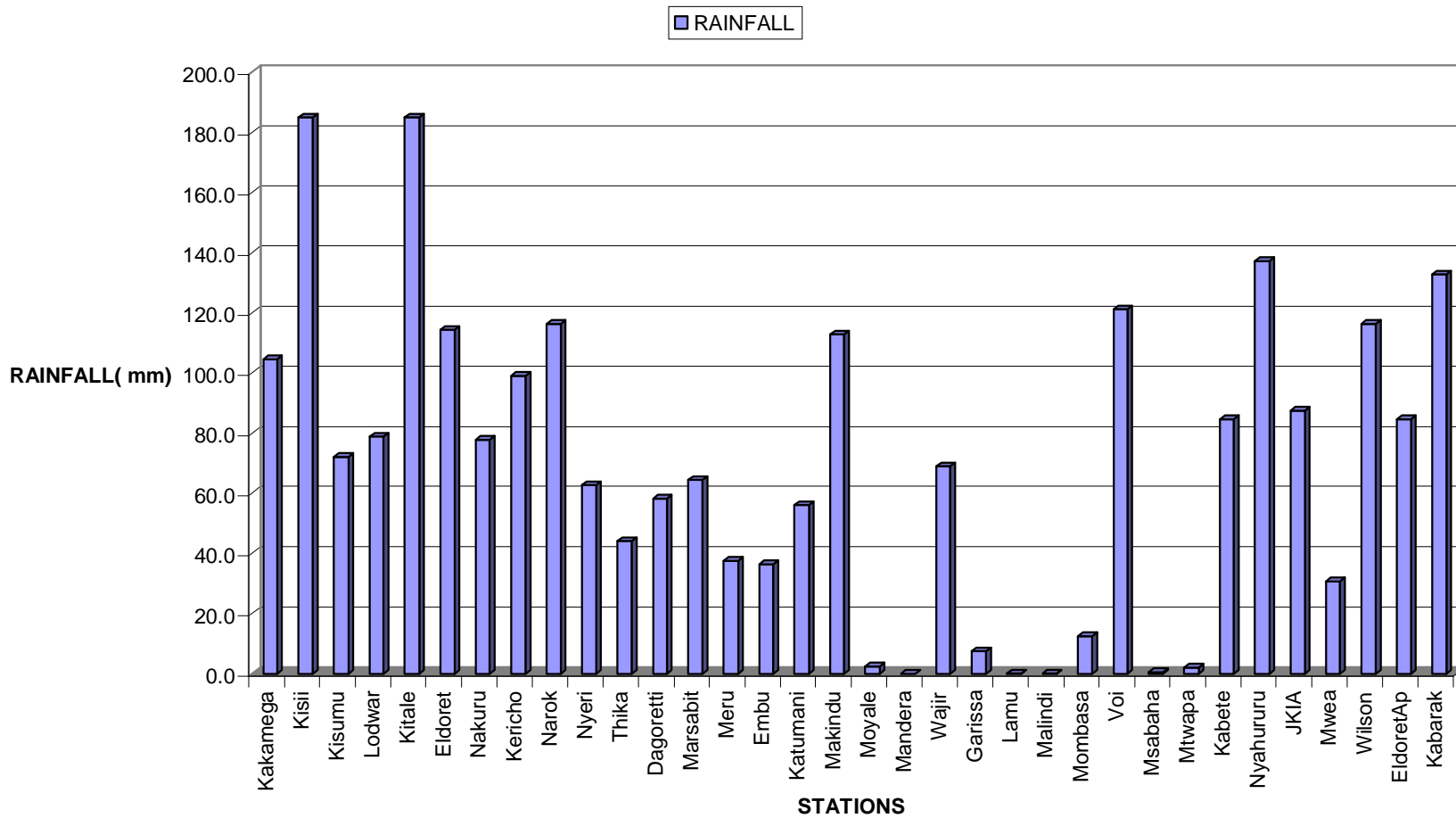
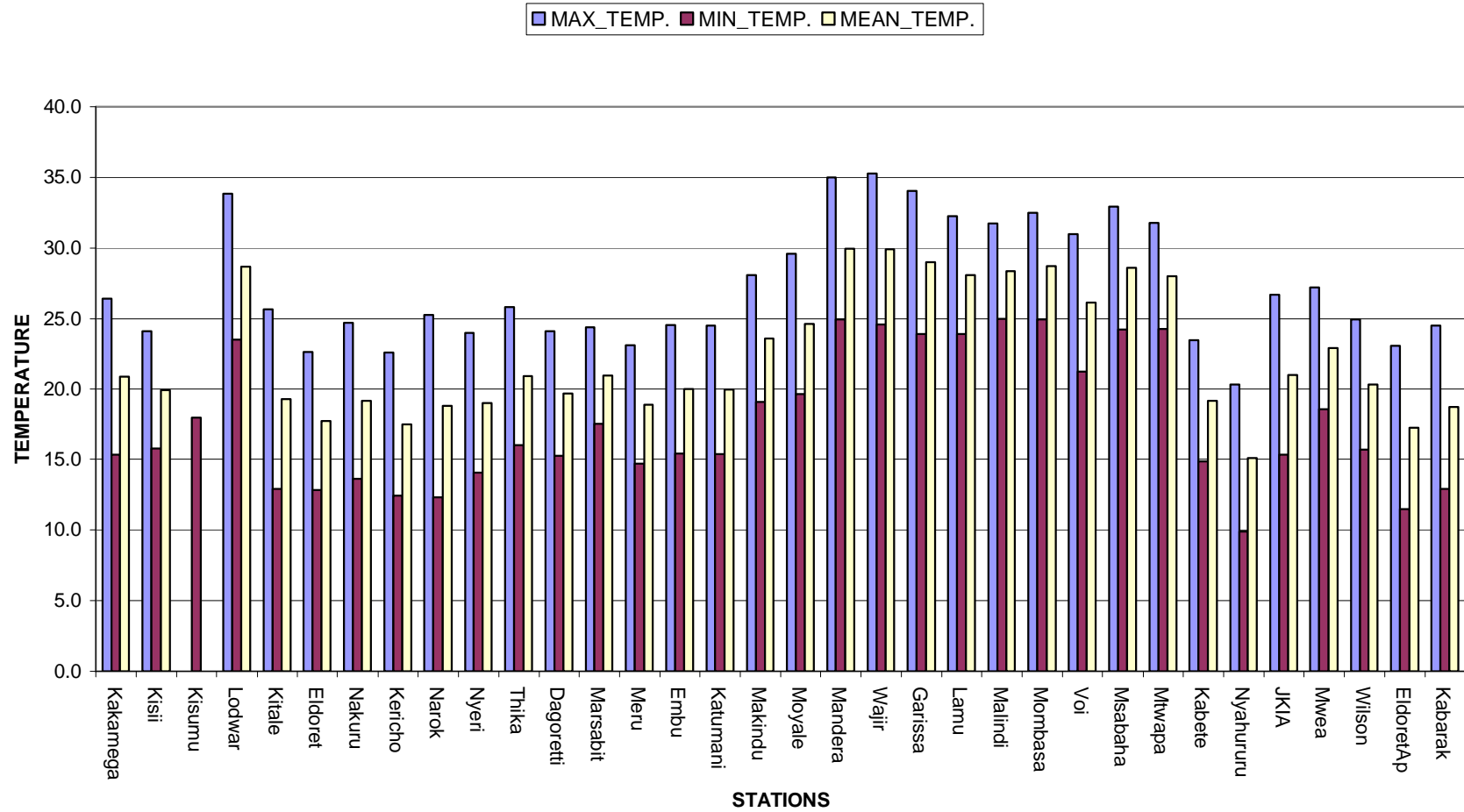
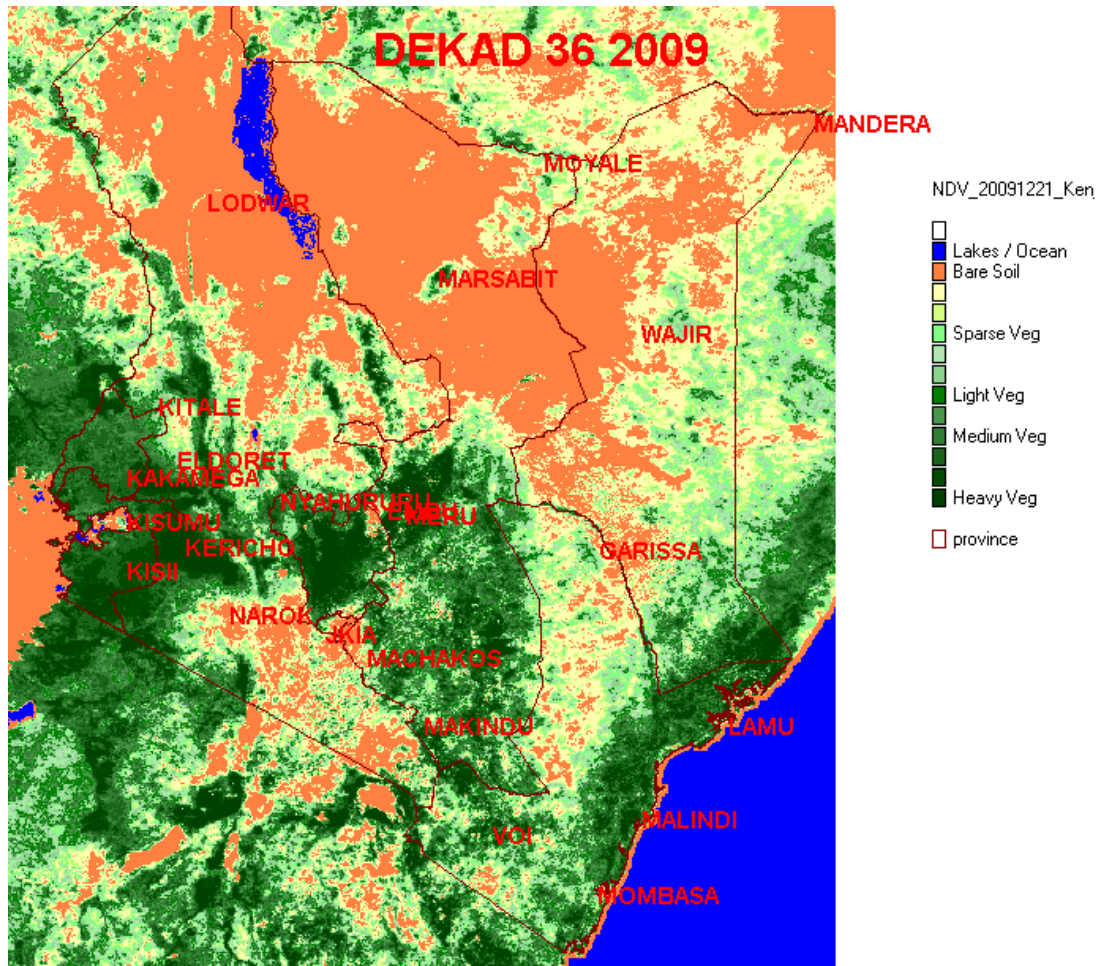


Fig. 1: Dekad 36, 2009; Actual Rainfall

DEKADE 36 TEMPERATURE GRAPH



Figs 3: Dekad 36, 2009; Mean Temperature (deg. Celsius)



Figs 5: Dekad 36, 2009; Normalized Difference Vegetation Index (NDVI)

EXPECTED WEATHER AND CROP CONDITIONS DURING THE NEXT 10 DAYS (1 –10 JANUARY, 2010)

- ✚ During the next 10 days, the western regions are expected to experience heavy rainfall activities. No expected weather impact on crops as most have been harvested.
- ✚ Nyanza and Central Rift Valley are expected to experience more rains over several places. Harvesting of beans is complete in the region. In Kisumu, the ongoing harvesting of maize may be hampered by the expected heavy rainfall.
- ✚ Central Highlands, Nairobi area and its environs, heavy rainfall activities are expected to continue during the dekad. This will continue to benefit the beans and maize crops in Nyeri, Thika and Kabete areas. Heavy rains in Nyahururu leading to excessive soil moisture are expected to adversely affect the harvesting of maize.
- ✚ Cool and cloudy mornings with heavy rains over high ground areas are expected in Eastern Province districts. Expected heavy rains are expected to continue hampering the harvesting of beans as maize keeps on doing well.
- ✚ The Coastal region rainfall activities will continue and spread to several places. This will lead to an improvement in crop performance.

For more advisories and guidance, Contact:

***The Kenya Meteorological Department,
Agrometeorological Services Division,
Dagoretti Corner, Ngong Road,
P.O. Box 30259, 00100 GPO, Nairobi
Tel: +254 (0)20 3867880-7/3876957/3873682
Fax: +254 (0)20 3876955
E-mail: agromet@meteo.go.ke
Website: www.meteo.go.ke***

©2009 The Kenya Meteorological Department