



KMD

AGROMETEOROLOGICAL BULLETIN

KENYA METEOROLOGICAL DEPARTMENT

19th Dekad, 1st to 10th July, 2009

Issue No. 19/2009, Season: JJA

HIGHLIGHTS

- *During the 19th Dekad i.e. 1st – 10th July, 2009, light to moderate was received over the Western, Nyanza Central Rift Valley with Kakamega, Kisii, Kisumu, Kericho, Kitale, Eldoret and Nakuru recording 35.6, 35.6, 8.8, 13.9, 24.9, 53.3, and 4.5 mm respectively. The Coastal regions experienced light to moderate rainfall with Mombasa, Mtwapa, Mshabaha, Malindi and Lamu recording Dekadal rainfall totals of 18.0, 16.1, 24.0, 3.6 and 33.9mm respectively. The rest of the Country experienced mainly dry and sunny conditions during the Dekad (Fig 1)*
- *Day time temperatures were relatively lower due to increased cloud cover over most parts of the country, with Lodwar, Mandera, Wajir, Garissa, Kakamega, Kisumu, Mwea, Makindu, Dagoretti and Mombasa recording a Dekadal Mean day Maximum of 33.9, 33.2, 32.7., 32.7, , 26.4, 29.2, 24.9, 27.4, 20.5 and 28.1 deg. Celsius respectively. (Fig 2)*
- *Night temperatures were relatively lower over Western and Central Rift Valley, Central Highlands, Nairobi area and its environs due to reduced cloud cover during the Dekad with Nyahururu, Narok, Eldoret Airport, Nyeri, Thika, Kabete and Dagoretti recording a Dekadal mean minimum of 4.9, 7.4, 9.3, 11.1, 10.4, 9.8 and 9.6 deg Celsius respectively. (Figs 1, 2)*
- *The pastoral regions and game parks of Southern Rift Valley, North Eastern, South Eastern Lowlands and the Coastal regions, experienced mainly sunny conditions during the Dekad. Pasture regeneration and animal's health conditions remains generally poor. (Figs. 1- 4)*

CROP AND WEATHER REVIEW

(1st to 10th July, 2009)

Central Province and Nairobi Area:

Cool and cloudy mornings with light rains/ drizzle over high ground areas was experienced in Central province, Nairobi area and its environs during the Dekad. Generally most crops (cash and food crops) are doing well and corresponding to normal growth. The maize crop is at flowering stage, while the bean crop is at the harvesting stage with normal yields being reported. (Fig1&2).

Eastern Province:

Cool and cloudy mornings with light rains/ drizzle over high ground areas, was experienced over most places bordering Mt. Kenya (Embu, Runyenjes, Chogoria, Chuka and Meru) during the Dekad. Most crops (cash and food crops) are doing well and corresponding to normal growth. The maize crop is at flowering stage, while the bean crop is at the harvesting stage with normal yields being reported. (Fig1&2)

In the Southern Lowlands of the Eastern Province (Machakos, Makueni, Mwingi and Kitui districts), sunny conditions was experienced over most places during the Dekad. The maize and beans crops are wilting due to insufficient rainfall. (Fig1&2).

Coast Province:

Light to moderate rainfall was experienced over several places during the Dekad (Lamu, Malindi, Kwale and Voi). Maize crop is at flowering stages and is doing well with normal yields being expected. (Figs.1-3)

North Eastern Province:

Sunny and dry conditions dominated the region (Mandera, Moyale, Wajir and Garissa) during the Dekad. Pasture regeneration and the animal's health conditions remained generally poor, due lack of rainfall and death of livestock is imminent due to inadequate pastures and water. (Figs.1, 2, 3 & 4)

Famine/hunger is still being experienced in most places and malnutrition levels are expected to be on rise.

Western Province:

Light to moderate rainfall were experienced over over few places of this region (Kakamega, Bungoma, Busia) during the Dekad. Generally most crops (cash and food crops) are doing well and corresponding to normal growth. The maize crop is at flowering stage, while the bean crop is at the maturity stage with normal yields being reported. (Figs.1-3).

Nyanza and Central Rift Valley:

Light to moderate rainfall were experienced over few places in this regions (Kisumu, Nyamira, Kisii Eldoret, Kitale, Kericho) during the Dekad. The maize and sorghum are at the flowering stages while the bean crop is at maturity stage with normal yields being reported. In areas around Kisumu poor crops performance is expected due to insufficient rainfall. (Figs.1-3).

In areas around Eldoret Kapsoya and Kitale the maize and bean crop are at the flowering stages and are wilting due to insufficient rainfall, with poor yields being expected. Adverse reports indicate the infestation of the maize crop by Maize Stock Borers and the bean crop by Aphids.

In areas around Kisii maize crop is at the maturity stage while the and bean harvesting is complete with normal yields being reported. (Figs.1-3).

Northern and Southern Rift Valley:

Northern Rift Valley (Lodwar, Lokitang) experienced generally sunny and dry conditions with light rains over few places during the Dekad. This has resulted in inadequate pastures and water sources for livestock, wildlife and human use leading to death of livestock and wildlife. (Figs.1-4).

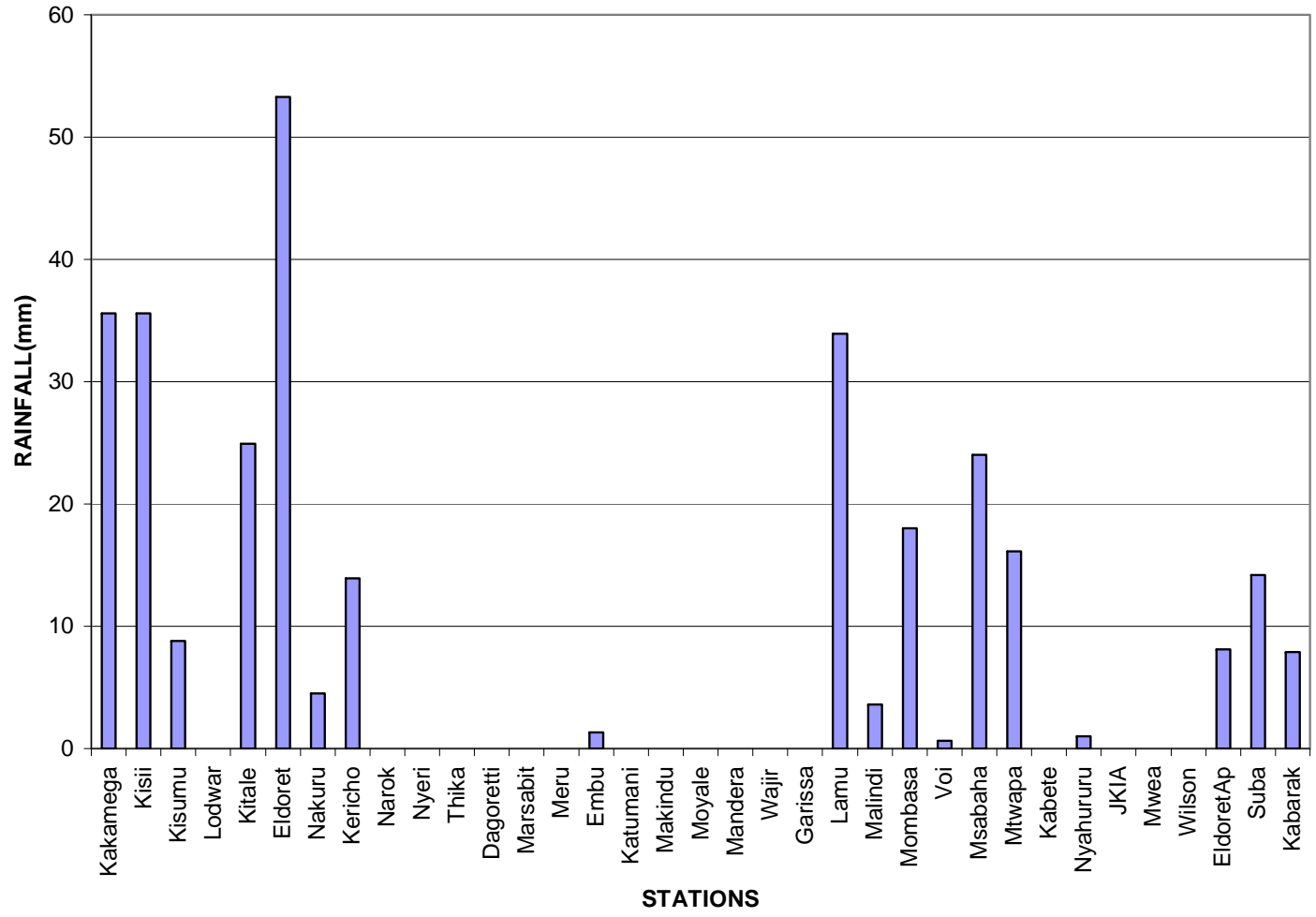
Famine/hunger and its related impacts is still being experienced and malnutrition levels are still high.

The pastoral regions of Southern Rift Valley(Narok, Kajiado, Mara) are expected to experience mainly sunny and dry conditions which will adversely affect water sources for livestock, wildlife and human use and, pastures resulting in poor animals` health (both livestock and game). Pastoralists have driven their livestock into the National parks /game reserves posing unfair competition to the only available pastures for the wildlife.

For the farming community, wheat and maize crops are experiencing water stress due to inadequate rainfall.

DEK 19 2009 RAINFALL GRAPH

RAINFALL (mm)



DEK 18 RAINFALL

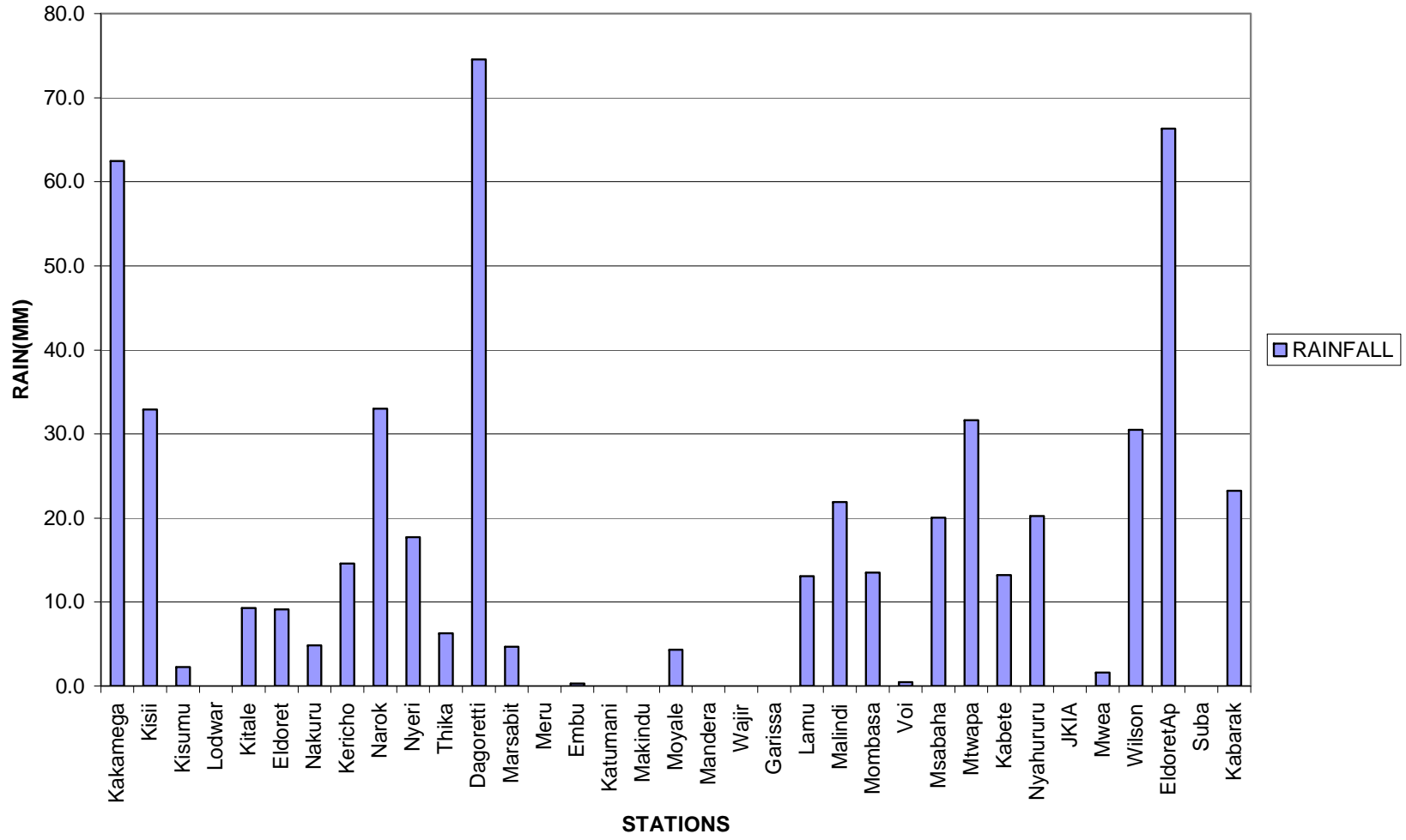
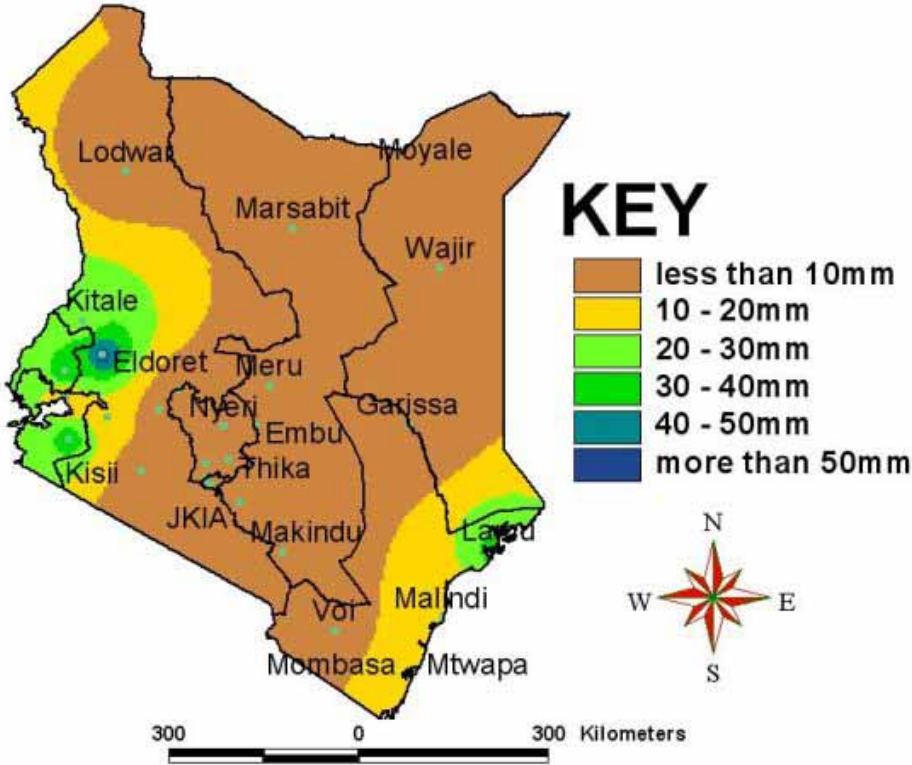


Fig. 1: Actual Rainfall (21st to 30th June, 2009) in mm

DEKAD 19, 2009 RAINFALL DISTRIBUTION.



DEK 19 2009 TEMPS GRAPH

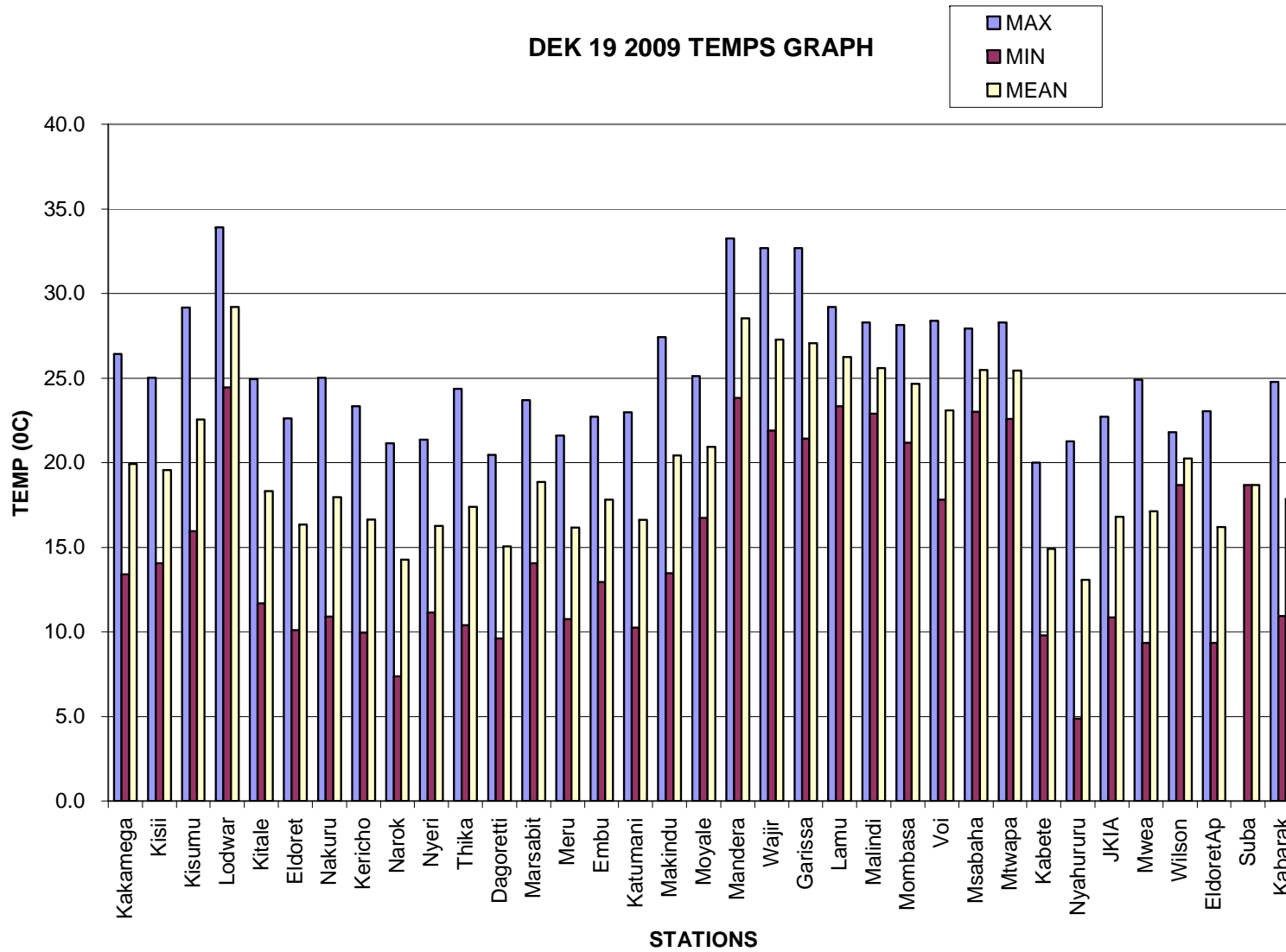
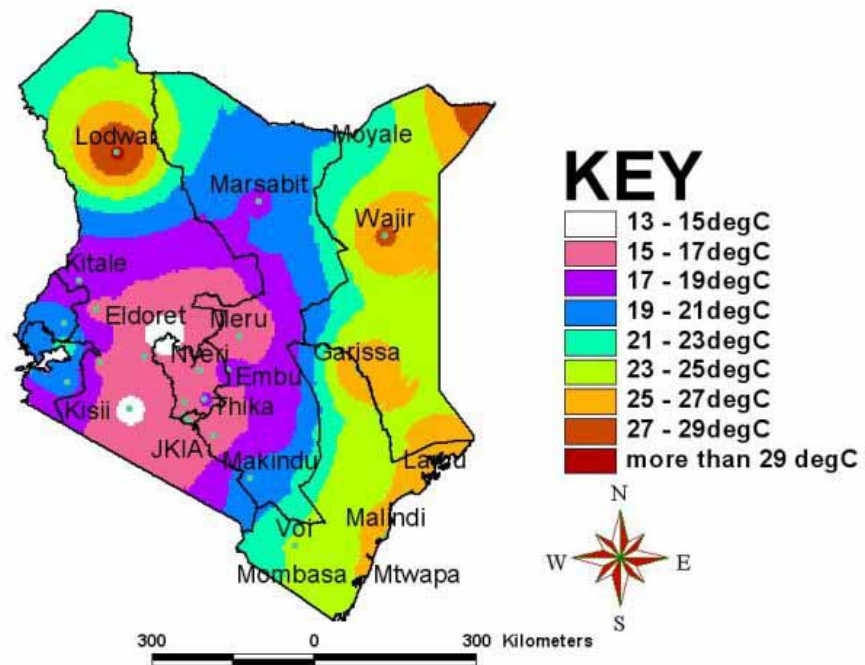


Fig 2: Mean Temperatures (21st to 30th June, 2009) deg. Celsius

DEKAD 19, 2009 MEAN TEMPERATURES



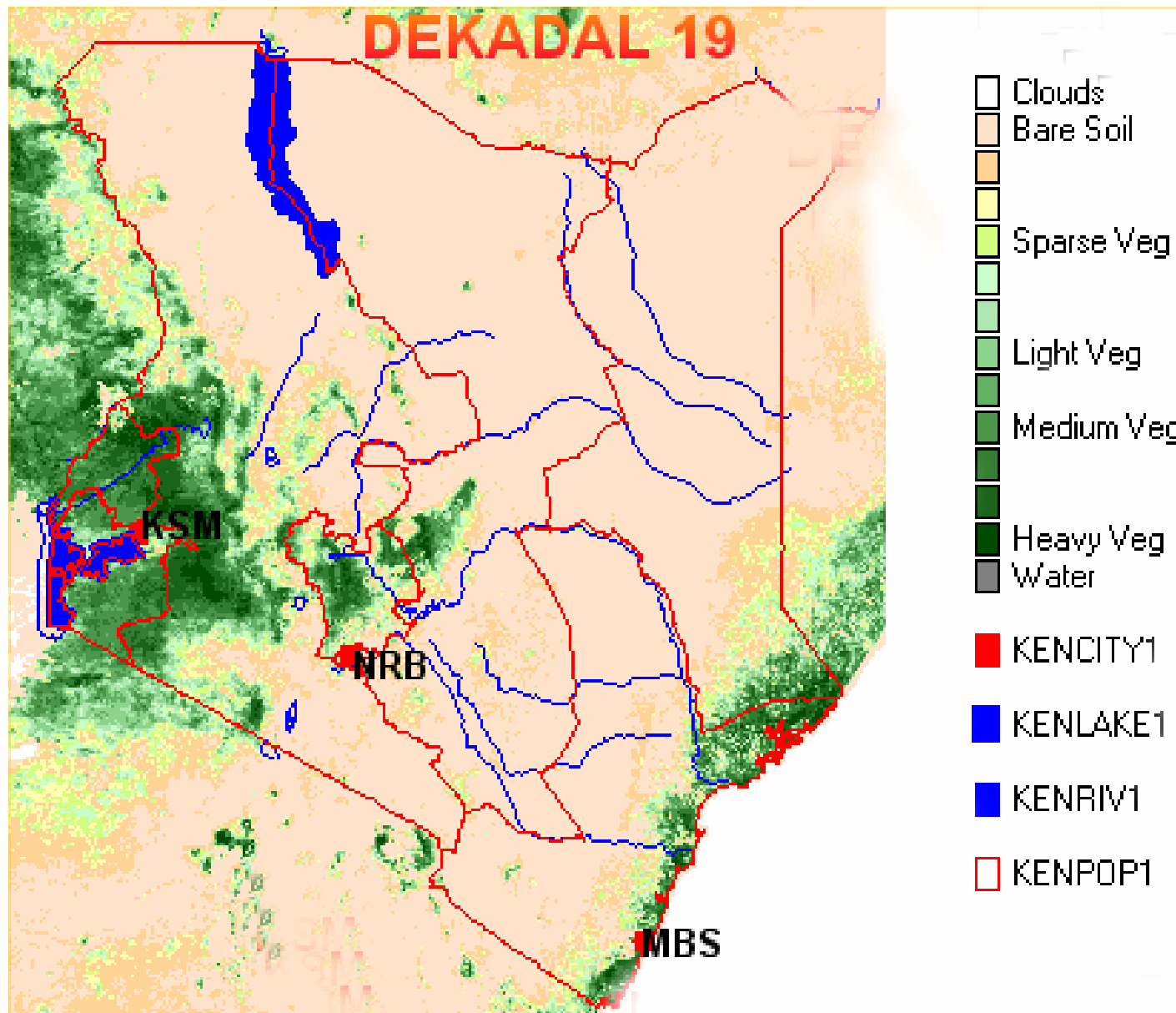


FIG 4: DEKAD 19 Normalized Difference Vegetation Index (1st to 10th July, 2009)

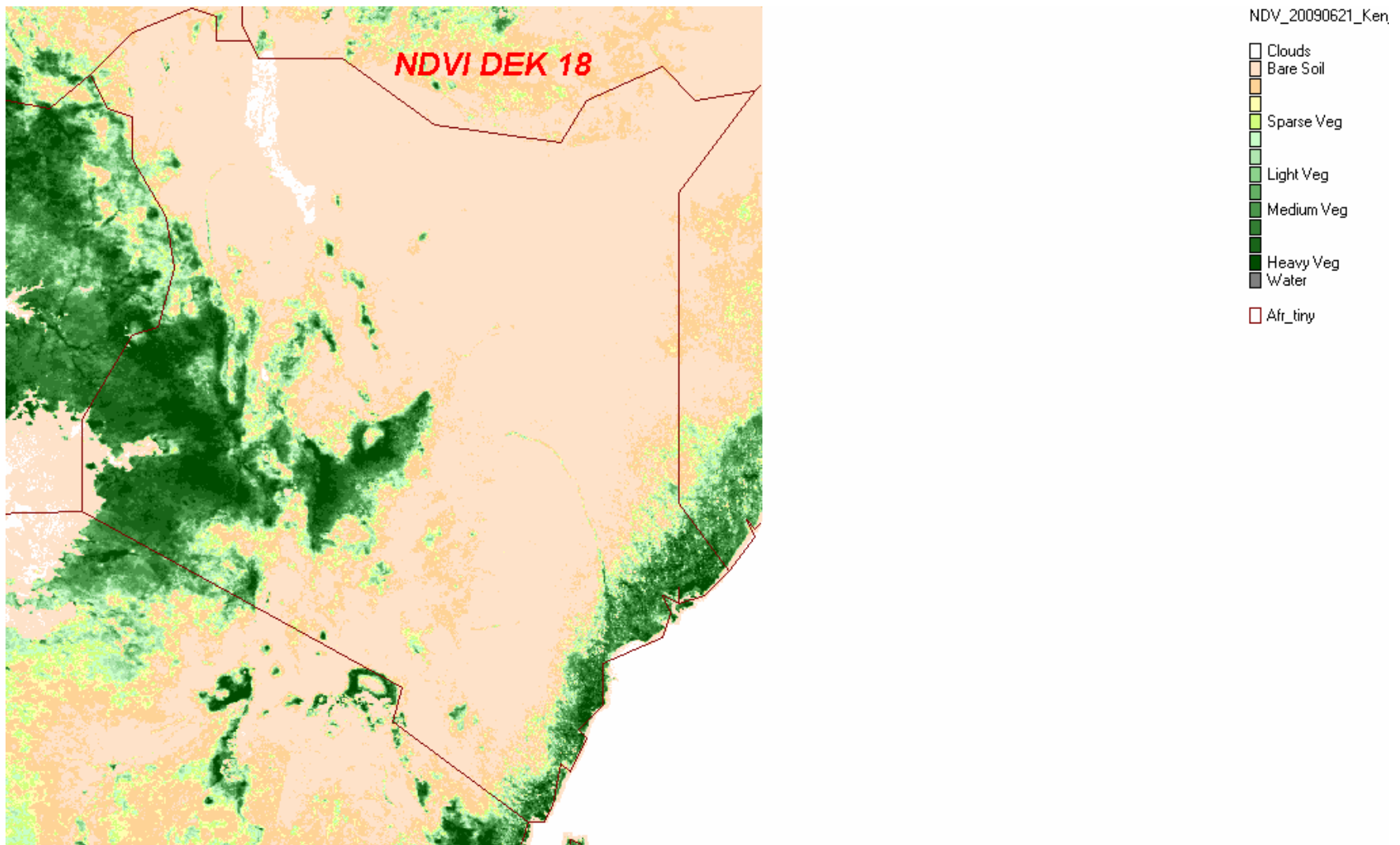


FIG 4: DEKAD 18 Normalized Difference Vegetation Index (21st to 30th June, 2009)

EXPECTED WEATHER AND CROP CONDITIONS DURING THE NEXT 10 DAYS (11th –20th July 2009).

During the next 10 days (11th –20th July, 2009) the Western regions are expected to experience light to moderate rainfall over few places. Crops are expected to continue doing well and correspond to normal growth with normal yields being expected.

Nyanza and Central Rift Valley are expected to experience light rains over few places, poor crops performance are expected due to reduced rainfall with below normal yields being expected in areas around Kisumu, Kitale and Eldoret.

Central Highlands, Nairobi area and its environs, are expected to experience light rains over few places, with cool and cloudy mornings with light rains/ drizzle over high ground areas. Crops are expected to continue doing well and correspond to normal growth. Harvesting of the beans is expected to commence with normal yields being expected.

In Eastern Province regions of Embu and Meru districts, bordering Mt Kenya, are expected to experience cool and cloudy mornings with light rains/ drizzle over high ground areas. Crops are expected to continue doing well and correspond to normal growth. Harvesting of the beans is expected to complete with normal yields being expected.

In South-Eastern lowlands, generally sunny conditions are expected. Poor crop performances are expected due to lack rainfall.

The Coastal region is expected to experience light to moderate rainfall. Good crop performance is expected due to increased rainfall with above normal yields being expected.

In the pastoral regions and game parks/reserve of Northwestern, Northeastern, Northern Rift Valley, Southern Rift Valley and Southeastern Lowlands, sunny and dry conditions are expected to prevail. Poor pastures and inadequate water sources for human and animal/wildlife use are expected. Poor animals` health both (livestock and game) are expected, due to inadequate pastures.

In summary, Crops are expected to continue doing well and correspond to normal growth in Western, parts of Nyanza, Central Rift Valley, Central Highlands and parts of Eastern province bordering Mt. Kenya. However, for the pastoral regions and game parks/reserves poor pasture regeneration and water sources are expected.

This product should be used in conjunction with Kenya Meteorological Department weather forecasts. For more information, Contact

The Kenya Meteorological Department

Agrometeorological Division

Dagoretti Corner, Ngong Road,

P.O. Box 30259, 00100 GPO, Nairobi

Tel: +254 (0)20 3867880-7/3876957/3873682

Fax: +254 (0)20 3876955

E-mail: agromet@meteo.go.ke

Website: www.meteo.go.ke

©2009 The Kenya Meteorological Department