



KMD

AGROMETEOROLOGICAL BULLETIN

KENYA METEOROLOGICAL DEPARTMENT

30th Dekad, 21st to 31st October 2008

Issue No. 29/2008, Season: OND

HIGHLIGHTS

- *During the 30th Dekad i.e. 21st to 31st October 2008 moderate to heavy rainfall was experienced over the Western, Nyanza, and parts Central Rift Valley provinces, with Kakamega, Kisii, Kisumu, Kericho, Nakuru and Eldoret, Eldoret Airport, Nyahururu, and Narok recording a Dekadal total of 40.5, 73.9, 68.1, 106.1, 87.5, 70.2, 123.3, 122.8, and 23.6 mm respectively. Central province, Nairobi area, its environ, parts of Eastern province bordering Mt, Kenya experienced light to moderate rainfall with Embu, Nyeri, Dagoretti, Kabete recording 10.5, 23.7, 19.2, 56.0 mm respectively. The Coast province experienced light to moderate rainfall with Mtwapa, Malindi, Mshabaha and Mombasa recording 17.2, 72.0, 53.6 and 19.1mm respectively during the Dekad. North Eastern province experienced light to moderate rainfall with Moyale and Mandera, recording 74.8 and 47.1 mm respectively. The rest of the country remained generally dry.*
- *Day time temperatures were relatively high over most parts of the country due to persistent sunny conditions. Night temperatures were moderately cool with Nyahururu recording a Dekadal mean minimum of 9.3 deg Celsius and a Dekadal mean of 14.9 deg Celsius. (Fig 2)*
- *The pastoral regions and game parks of Northern Rift Valley, Southern Rift Valley, North Eastern and South Eastern lowlands, experienced light rains which was a relief to water sources for livestock and wildlife. Incidences of wildlife and human conflict have been reported in areas bordering game parks and game reserves. (Figs. 1, 2 & 3).*
- *Land preparation and planting complete in most places as the short rains season progresses.*

CROP AND WEATHER REVIEW

(21st to 31st October 2008)

Central Province and Nairobi area:

Moderate to heavy rainfall was experienced over several parts of Central province, Nairobi area and its environs. Land preparations and planting is complete. The maize and bean crops planted earlier are at the emergence stages. First weeding and top dressing is taking place. (Figs.1, 2, & 3).

Eastern Province:

Moderate to heavy rainfall was experienced in parts Embu and Meru districts bordering Mt. Kenya. Land preparations and planting is complete. The maize and bean crops planted earlier are at the emergence stages. First weeding and top dressing is taking place. (Figs.1, 2, & 3).

In the Southern Lowlands (Machakos, Makueni, Mwingi and Kitui districts) light rains were experienced in few places during the Dekad, but hot and dry conditions dominated this region. Land preparations and planting is complete. Famine and its related impacts is being experienced in most parts in these regions and food distribution is highly required to avert the current food situation.

Pastures and water for livestock and wildlife is inadequate leading to of livestock death. (Figs.1, 2, & 3).

Coast Province:

Light to moderate rainfall was received in this region during the review period. Land preparations and planting complete in very few farms during this short rain season, otherwise land is normally left furrow during the short rain season. (Figs.1, 2)

North Eastern Province:

Light to moderate rainfall was experinced during the dekad resulting in improved water sources for for livestock, wildlife and human use. Despite the rains, hunger is looming and malnutrition level is high especially among young children. therefore urgent measures are required to save the situation. Death of livestock has been reported in some areas within the province. (Figs.1, 2, & 3).

Western Province:

Moderate to heavy rainfall was received in several places in this region (Kakamega, Bungoma, Busia, Eldoret and Kitale). Harvesting of last season's maize crop is taking place with normal yields being reported. Rains during the harvest season may adversely affect both harvesting processes and post-harvest operations. This season's bean crop is at the flowering stage. (Figs.1 & 2).

Nyanza and Central Rift Valley:

Light to moderate rainfall was received in this region. In Nyanza land preparation and planting is complete and the maize crop is at the emergence stage, weeding and top dressing is taking place. For Central Rift Valley crops are doing well and corresponding to normal growth with normal yields being expected. In areas around Kisii several farmers have planted and the maize and beans are at the emergence stages. (Figs 1 & 2)

Northern and Southern Rift Valley:

Light rains were experienced in few places of the Northern Rift and North Western regions during the dekad. Hot and dry conditions mainly dominated these regions resulting in inadequate pastures and water sources for both domestic and livestock. For the game parks/reserves, inadequate pasture, browse. Hunger is looming and malnutrition level is high among children and therefore urgent measures are required to save the situation. Loss of livestock through starvation is also likely. (Figs.1-3).

DEKADAL RAINFALL

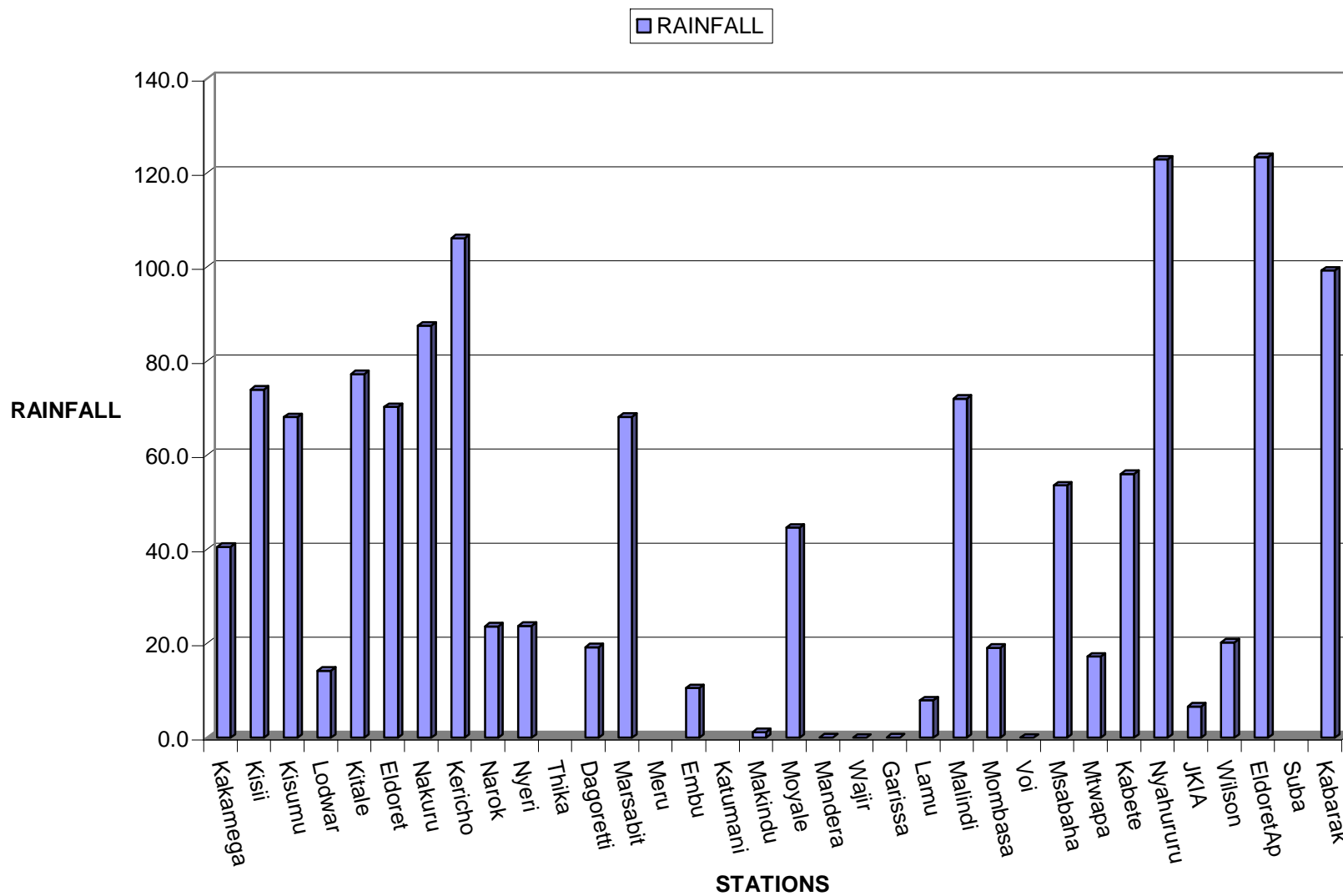


Fig. 1: Actual Rainfall (21st to 31st October 2008) in mm

DEKADAL TEMPERATURES

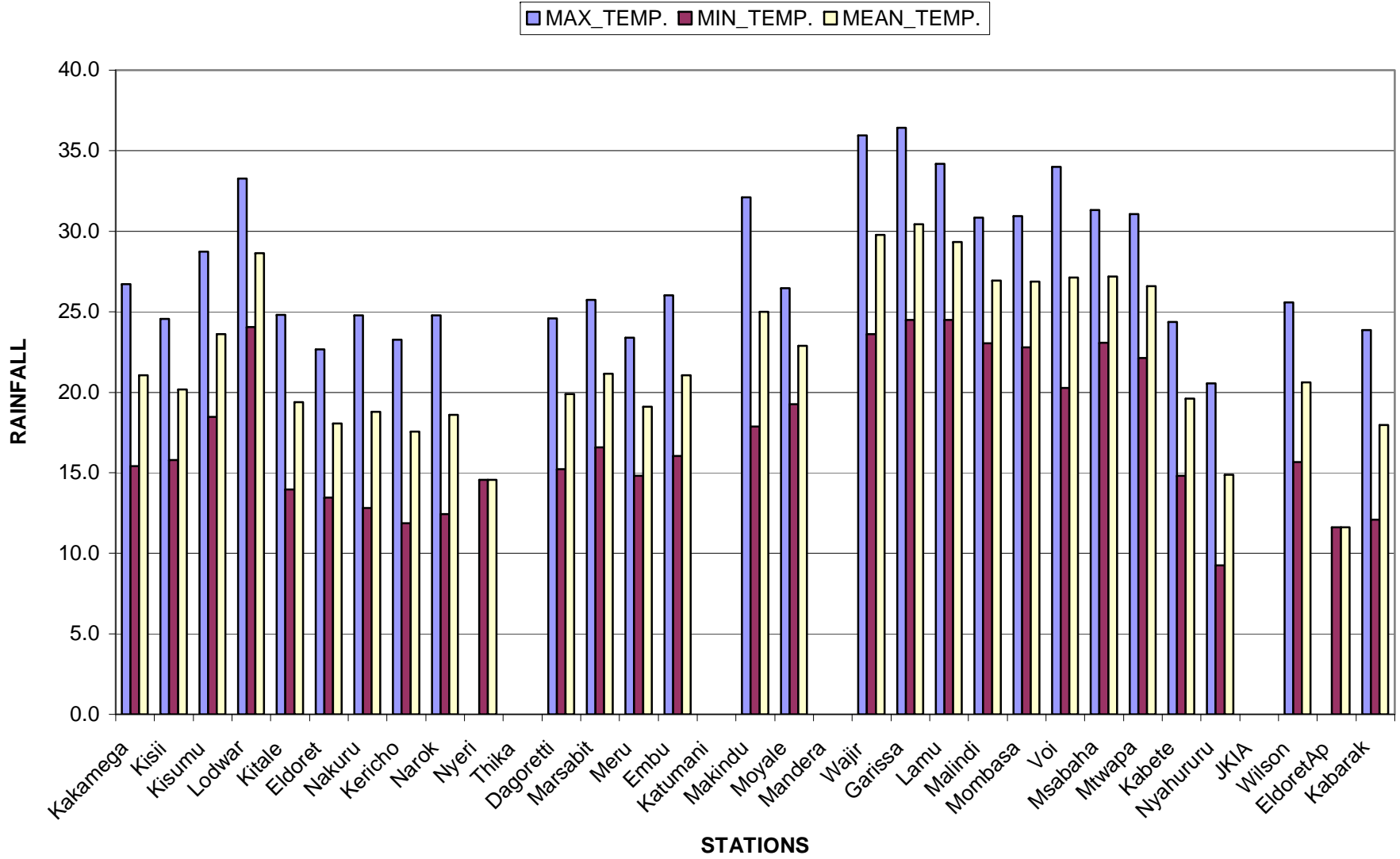


Fig 2: Mean Temperatures (21st to 31st October 2008 deg. Celsius)

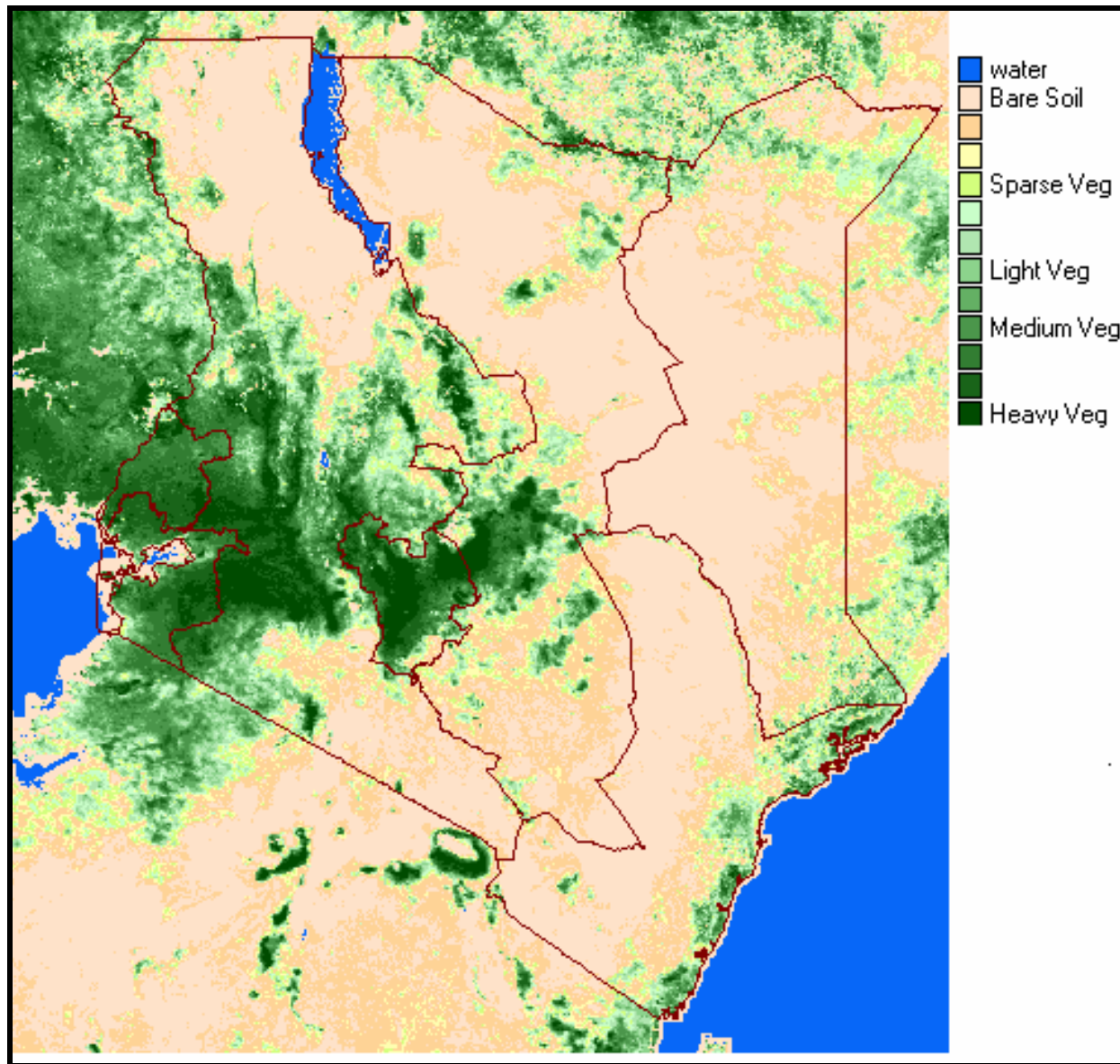


Fig. 3: Normalized Difference Vegetation Index (21st to 31st October 2008)

EXPECTED WEATHER AND CROP CONDITIONS DURING THE NEXT 10 DAYS (1st –10th November 2008).

During the next 10 days (1st –10th November 2008), Western, Nyanza and Central Rift Valley regions are expected to experience moderate to heavy rainfall over several places. Crops are expected to continue doing well and correspond to normal growth.

Central Highlands, Nairobi area and its environs, are expected to experience moderate rains in several places. Crops are expected to continue doing well and correspond to normal growth.

In Eastern Province regions of Embu and Meru districts bordering Mt Kenya are expected to experience moderate rains in several places. Crops are expected to continue doing well and correspond to normal growth.

In South-Eastern lowlands, light rains are expected over few places, but generally hot and dry conditions are expected to prevail in several places resulting in inadequate pastures and water for human, livestock and wildlife use. Several livelihoods will continue experiencing the impacts of drought that has hit the region. Land preparations and planting in readiness for short rain season are expected to continue.

The Coastal region is expected to experience light to moderate rainfall. Crops are expected to continue doing well and correspond to normal growth.

In the pastoral regions of Northwestern, Northeastern and South Rift Valley districts light to moderate rainfall is expected resulting in improved pastures regeneration and water sources for human and animal/wildlife use.

In summary maize crop is at the harvesting stages in most parts of Western Kenya around Kitale and Eldoret with normal yields being expected. Land preparation and planting complete in Central, Eastern, Rift valley and Nairobi Provinces, for the short rain season, and crops are expected to continue doing well and correspond to normal growth.

This product should be used in conjunction with Kenya Meteorological Department weather forecasts.

For more information, Contact:

The Kenya Meteorological Department

Agrometeorological Division

Dagoretti Corner, Ngong Road,

P.O. Box 30259, 00100 GPO, Nairobi

Tel: +254 (0)20 3867880-7/3876957/3873682

Fax: +254 (0)20 3876955

E-mail: agromet@meteo.go.ke

Website: www.meteo.go.ke

©2008 The Kenya Meteorological Department