



KMD

AGROMETEOROLOGICAL BULLETIN

KENYA METEOROLOGICAL DEPARTMENT

22nd Dekad, 1st to 10th August 2008

Issue No. 22/2008, Season: JAS

HIGHLIGHTS

- *During the 22nd Dekad i.e. 1st to 10th August 2008 moderate to heavy rainfall was experienced over the Western, Nyanza, and parts Central Rift Valley provinces, with Kakamega, Kisii, Kisumu, Kericho, Eldoret Airport, Nakuru, Nyahururu recording a Dekadal total of 62.4, 70.3, 9.4, 39.4, 80.3, 88.7, 8.5, 44.8 mm respectively. Central province, Nairobi area, its environ, parts of Eastern province bordering Mt. Kenya experienced light rains/drizzle while the Coast province experienced light rains with Nyeri, Embu, Dagoretti, Msabaha, Malindi, Lamu, and Mtwapa recording 4.1, 11.5, 1.6, 58.7, 21.5, 18.5, and 9.4mm respectively during the Dekad. The rest of the country remained generally dry.*
- *Maximum (daytime) temperatures were relatively warmer over most parts of the country compared to the previous Dekad. Day time temperatures were relatively low especially over the Western, parts of Central Rift Valley, Central highlands, Nairobi area and its environs which experienced cold and chilly conditions at the beginning of the Dekad. Night temperatures were low over Western, parts of Central Rift Valley, Central highlands, Nairobi area and its environs of with Narok recording a minimum temperature of 7.0 deg. and Nyahururu recording a Dekadal minimum mean of 13.8 deg Celsius. (Figs.2)*
- *The pastoral regions and game parks of Northern Rift Valley, Southern Rift Valley, North Eastern and South Eastern lowlands, experienced light or no rains at all resulting in inadequate pastures and water posing potential risks of wildlife and human conflict over food and water. (Figs.1, 2 & 3).*

CROP AND WEATHER REVIEW

(21st to 31st July 2008)

Central Province and Nairobi area:

Cold, chilly and cloudy conditions with light rains/drizzle were experienced over most parts of Central province, Nairobi area and its environs. Maize crop is at the flowering/maturity stages and corresponding to normal growth in the high ground areas. Harvesting of bean crop is almost complete with poor yields being reported due to insufficient rainfall during flowering stage. For the low ground areas of Nyeri, Kirinyaga, Muranga, Kiambu, Thika and Maragua Districts the maize crop is stunted or wilting with poor yields being expected due to water stress experienced during the previous dekads.

Eastern Province:

Cold and Cloudy conditions with light rains/drizzle were experienced in parts Embu and Meru districts bordering Mt. Kenya. Maize crop is at the maturity stage in most places while harvesting of beans crop is complete with poor yields being reported. In the lowland areas of Mbeere District, maize crop is experiencing water stress due to insufficient rainfall with below normal yields being expected.

To the south (Machakos, Mwingi and Kitui), hot and dry conditions dominated this region during the period under review. Total crop failure has occurred in several places due to inadequate rainfall during entire season. The government machineries should be put on alert on food insecurity for the vulnerable livelihoods.

Wildlife /human conflict is expected especially in areas bordering the national parks due to food and water scarcity.

Coast Province:

Light to moderate rainfall was received in this region during the review period. Maize crop is at the maturity stage and harvesting in some regions has started with above normal yields being reported. Grass/browse for livestock and game is also doing well and the animals are healthy.

North Eastern Province:

Light or no rains at all was experienced during the dekad resulting in inadequate pastures and water for livestock, game and human use. (Figs.1, 2, & 3)

Western Province:

Moderate to heavy rainfall was received in several places in this region (Kakamega, Bungoma, Busia, Eldoret and Kitale). Maize crop is at flowering stage and corresponding to normal growth with normal yields expected (Figs.1 & 2).

Nyanza and Central Rift Valley:

Moderate to heavy rainfall was received in this region. Crops are doing well and corresponding to normal growth. Maize crop in areas around Kisii is at the maturity stage and harvesting has started in some parts with normal yields being reported. In the same region some farmers have started land preparation for the next season crop has started. (Figs 1 & 2)

Northern and Southern Rift Valley:

Little or no rain was reported in the Southern Rift and North Western regions during the dekad. Hot and dry conditions dominated these regions resulting in inadequate pastures and water sources for both domestic and animal use. For the game parks/reserves, inadequate pasture, browse and water may cause animal /human conflict while animal move in search of food and water. In the farming areas of Southern Rift Valley lack of adequate rainfall has resulted in seasonal crop failure. (Figs.1-5).

DEKADAL RAINFALL

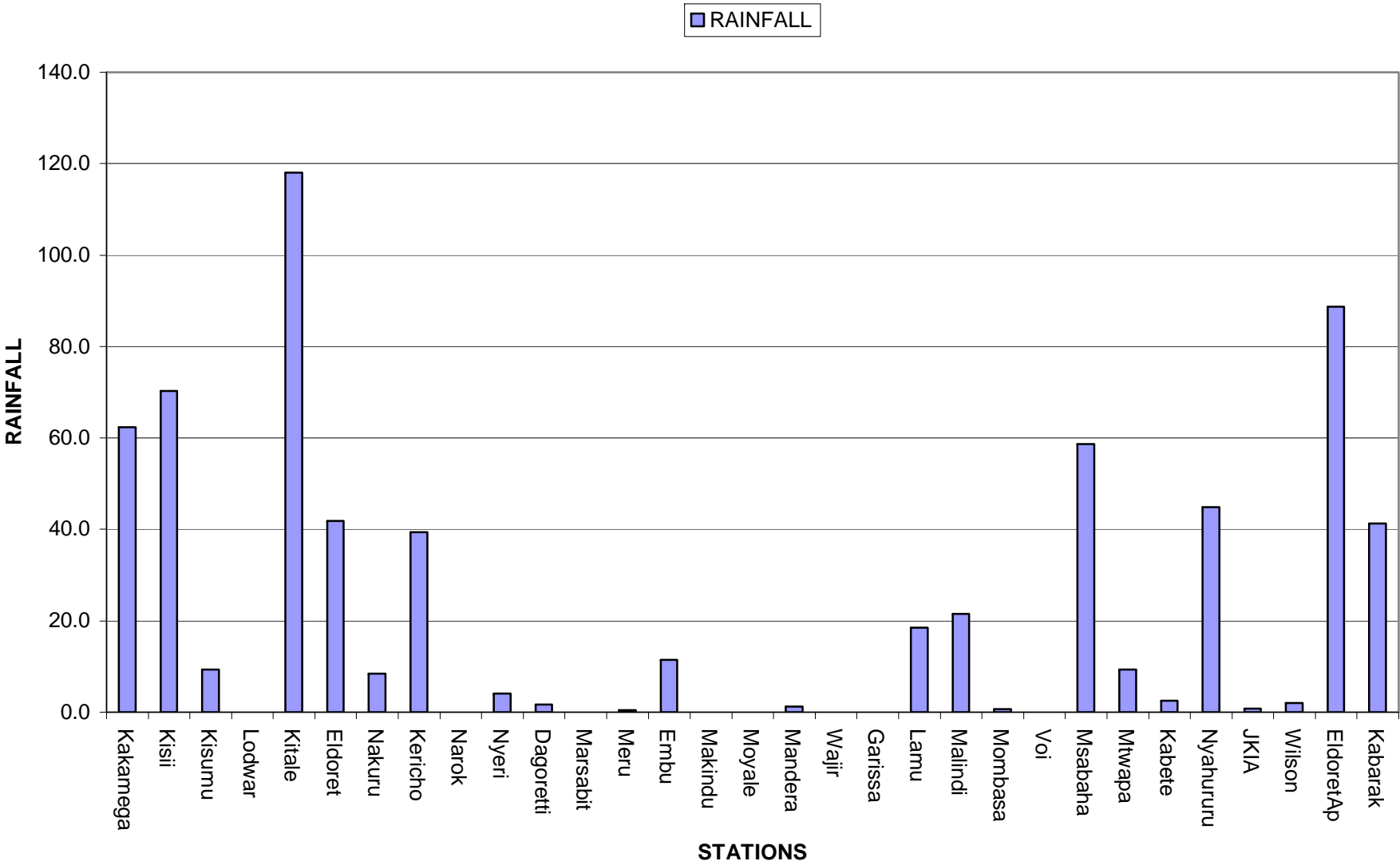


Fig. 1: Actual Rainfall (1st to 10th August 2008)

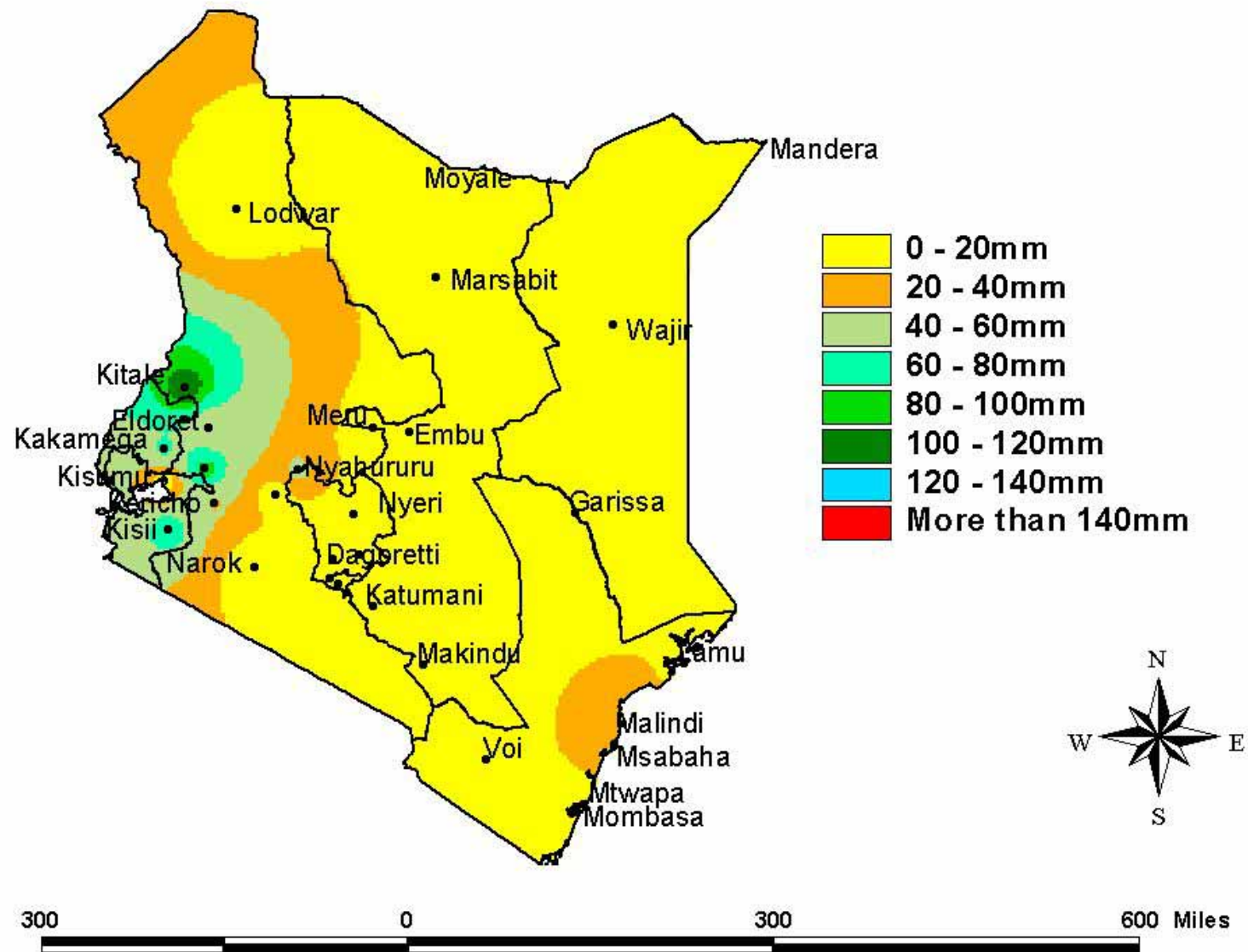


Fig. 2: Actual Rainfall (1st to 10th August 2008)

DEKADAL TEMPERATURES

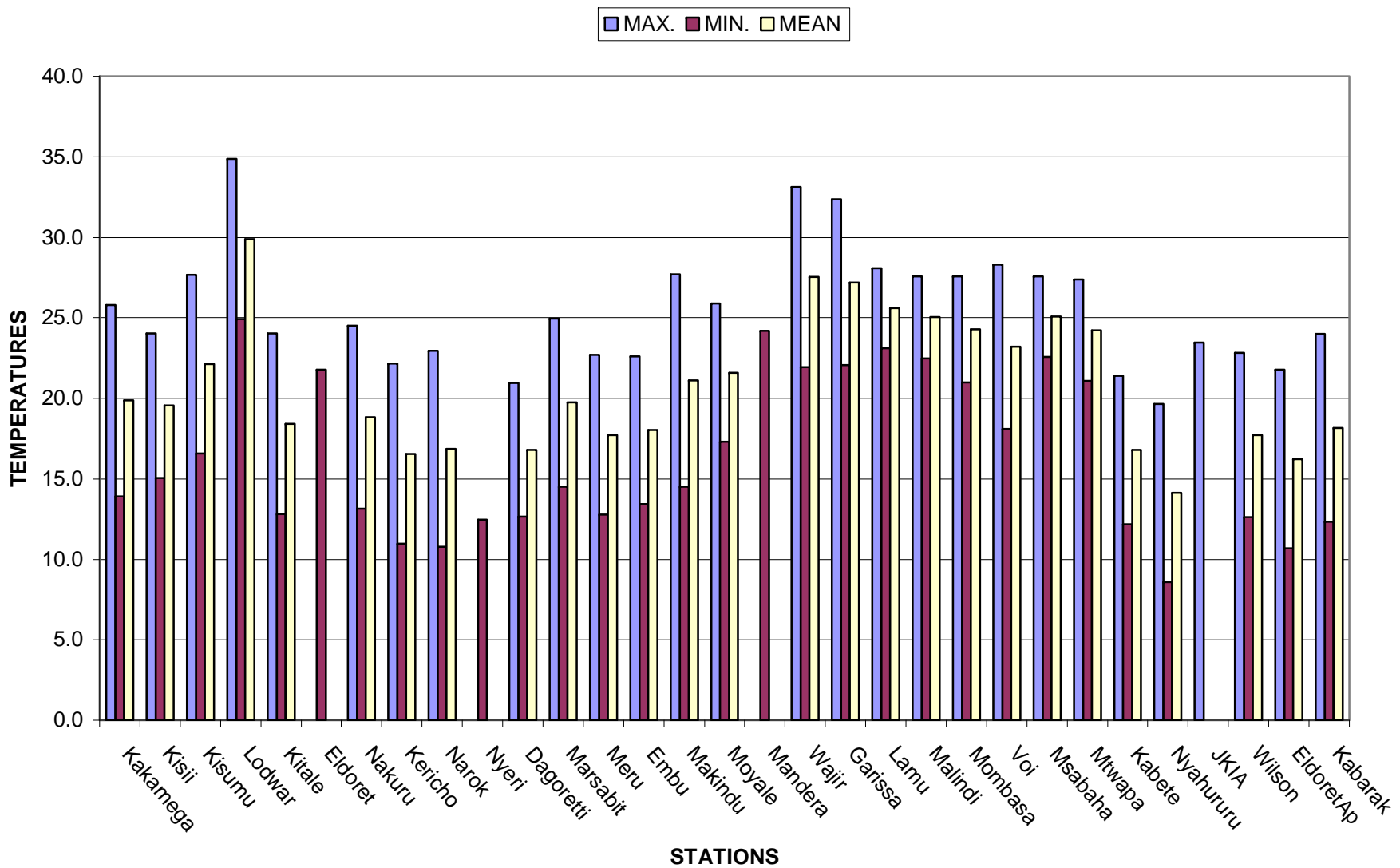


Fig 3: Mean Temperatures (1st to 10th August 2008)

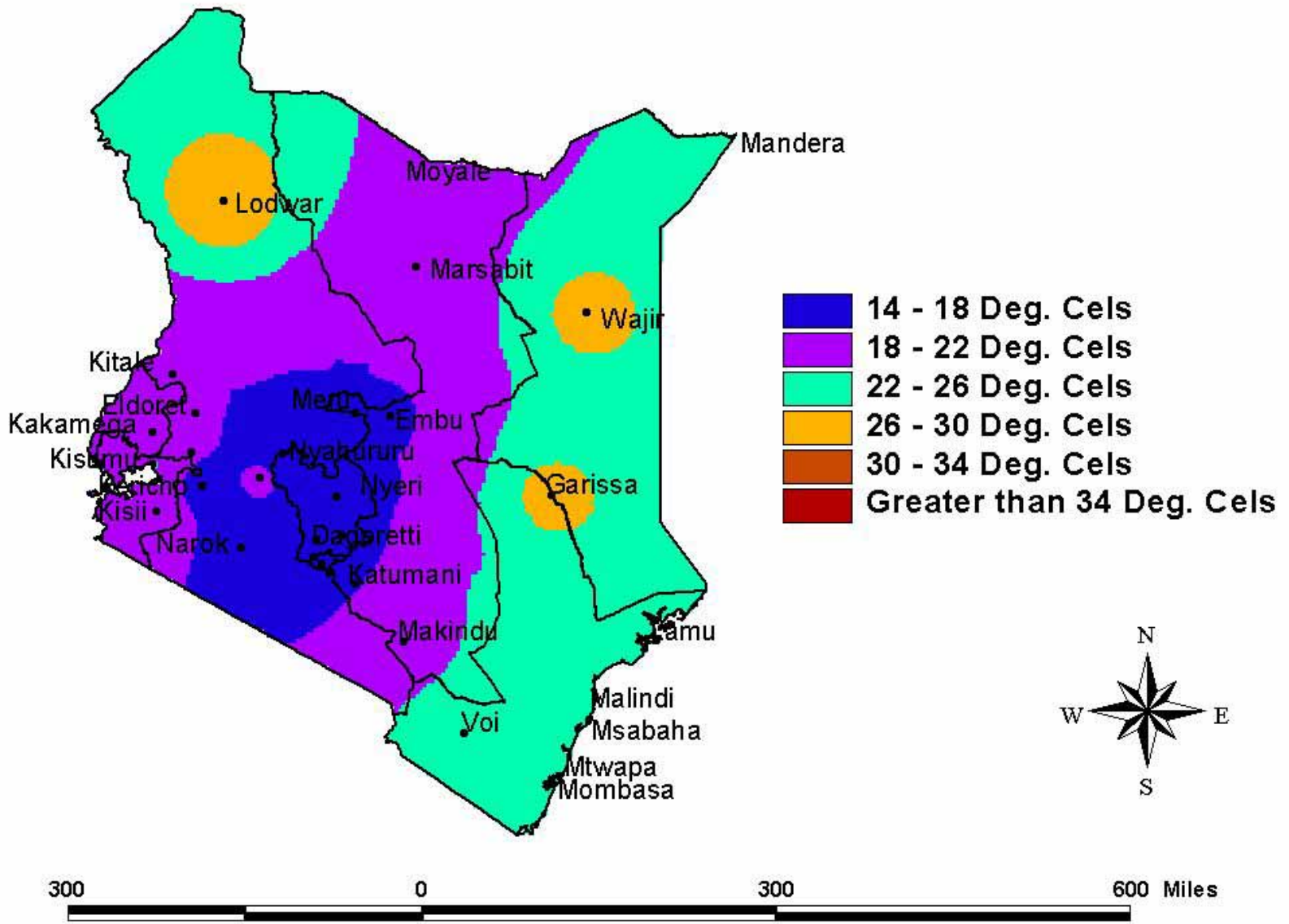


Fig 4: Mean Temperature (1st to 10th August 2008)

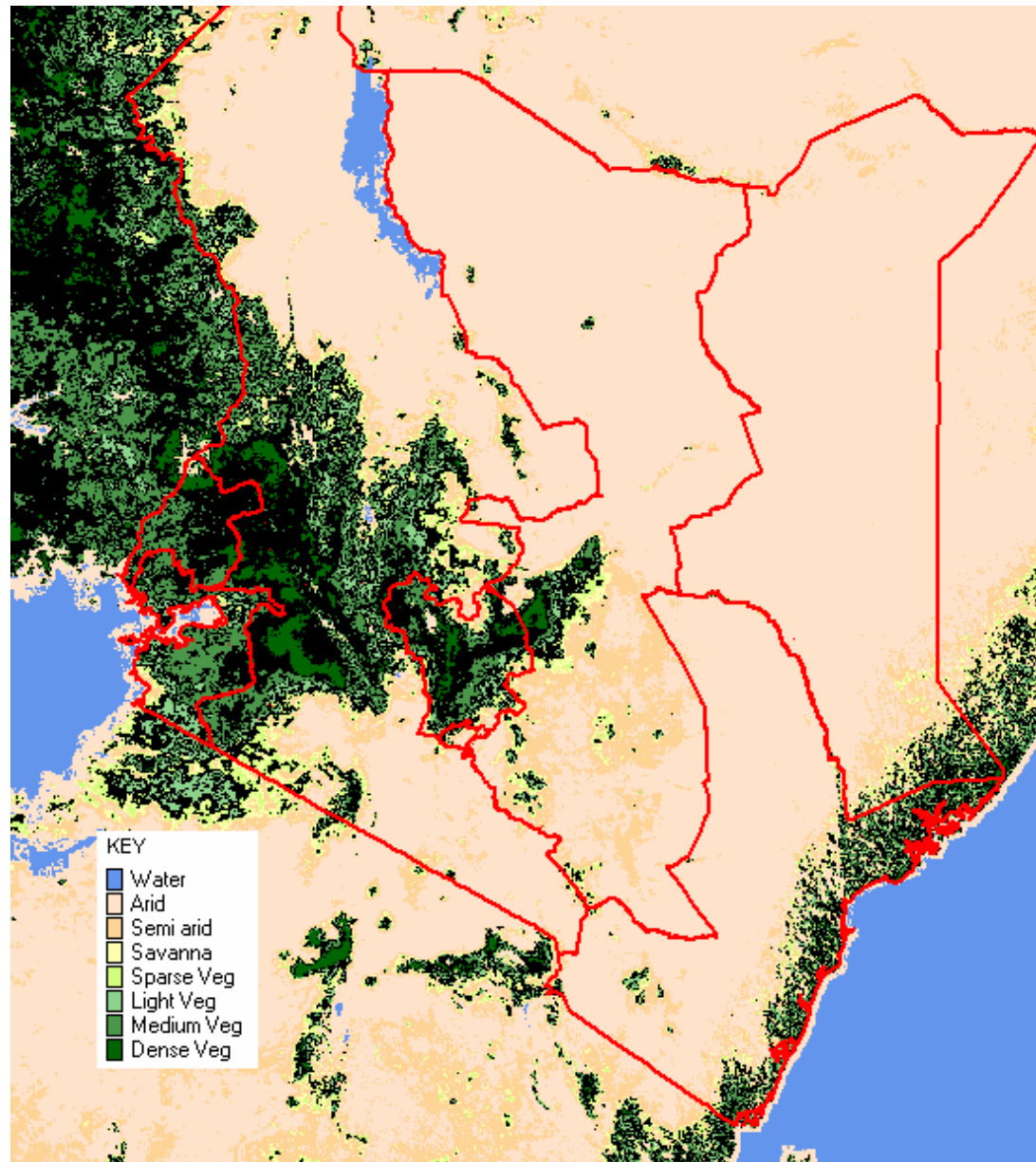


Fig. 5: Normalized Difference Vegetation Index (1st to 10th August 2008)

EXPECTED WEATHER AND CROP CONDITIONS DURING THE NEXT 10 DAYS (11th –20th August 2008).

During the next 10 days (11th –20th August 2008), Western, Nyanza and Central Rift Valley regions are expected to experience light to moderate rainfall over several places. Crops are expected to continue doing well and correspond to normal growth with normal yields being expected.

Central Highlands, Nairobi area and its environs, are expected to experience cold and cloudy conditions with light rains or drizzle in several places. For the highland areas of Nyeri and Kirinyaga districts bordering Mt. Kenya crops are expected to continue doing well with normal yields being expected, but for the low land areas crop performance remains poor due to water stress experienced earlier during the season.

In Eastern Province regions of Embu and Meru districts bordering Mt Kenya are expected to experience cold and cloudy conditions with light rains or drizzle in few places. Crops are expected to continue doing well with normal yields being expected. In South-Eastern lowlands, dry and hot conditions are expected with inadequate pastures for both livestock and wildlife.

The coastal regions are expected to experience light to moderate rainfall. Crops are expected to continue doing well and correspond to normal growth with above normal yields being expected.

In the pastoral regions of Northwestern, Northeastern and South Rift Valley districts hot and dry conditions are expected to prevail, resulting in poor pastures and inadequate drinking water for both human and animal use. The pastoralists may be forced to migrate in search of pastures and water.

In summary maize crop is at the flowering/maturity stages in most places of Western and areas of Rift Valley around Kakamega, Kitale and Eldoret and is corresponding to normal growth. In the highland areas of Central and Eastern Provinces the maize crop is at the maturity stage and is corresponding to normal growth with normal yields being expected.

This product should be used in conjunction with Kenya Meteorological Department weather forecasts

Contact information

Kenya Meteorological Department

Agrometeorological Division

Dagoretti Corner, Ngong Road,

P.O. Box 30259, 00100 GPO, Nairobi

Tel: +254 (0)20 3867880-7/3876957/3873682

Fax: +254 (0)20 3876955

E-mail: agromet@meteo.go.ke

Website: www.meteo.go.ke

©2008 The Kenya Meteorological Department