



KMD

AGROMETEOROLOGICAL BULLETIN

KENYA METEOROLOGICAL DEPARTMENT

21st Dekad, 21st to 31st July 2008

Issue No. 21/2008, Season: JAS

HIGHLIGHTS

- *During the 21st Dekad i.e. 21st to 31st July 2008 moderate to heavy rainfall was experienced over the Western, parts Central Rift Valley and the Coastal regions, with Kakamega, Kisii, Kisumu, Kericho, Eldoret, Nakuru, Nyahururu Msabaha, Malindi, Lamu, Mombasa, Mtwapa recording a Dekadal total of 94.1, 139.7, 56.9, 66.4, 80.3, 28.0, 89.8, 28.6, 21.7, 72.2, 48.1mm respectively Eldoret Airport recorded the highest Dekadal rainfall of 165.6mm. Central Highlands Nairobi area, its environ and parts of Eastern province bordering Mt, Kenya experienced light rains/drizzle with Nyeri, Embu, Thika and Dagoretti recording 11.3, 38.7, 13.6 and 6.9mm respectively during the Dekad. The rest of the country remained generally dry.*
- *Maximum (daytime) temperatures remained relatively low over most parts of the country due to cloudy skies. Night temperatures were relatively cold especially over the Western, parts of Central Rift Valley, Central highlands, Nairobi area and its environs, with Nyahururu recording a minimum temperature of 7.2 deg. with a Dekadal minimum mean of 13.8 deg Celsius. (Figs.2)*
- *The pastoral regions and game parks of Northern Rift Valley, Southern Rift Valley, North Eastern and South Eastern lowlands, experienced light or no rains at all resulting in inadequate pastures and water posing potential risks of animal human conflict over food and water . (Figs.1, 2 & 3).*
- *Food security- due to the poor performance of rainfall both in terms of amounts and its distribution especially lower parts of Central, Eastern, Northern and Southern Rift Valley and Northeastern Provinces several households are likely to be threatened with hunger. (Figs.1, 2 & 3).*

CROP AND WEATHER REVIEW **(21st to 31st July 2008)**

Central Province and Nairobi area:

Cool and cloudy conditions with light rains/drizzle were experienced over most parts of Central province, Nairobi area and its environs. Maize crop is at the flowering/maturity stages in the high ground areas while harvesting of bean crop is almost complete with poor yields being reported due to insufficient rainfall during flowering stage. For the low ground areas of Nyeri, Kirinyaga, Muranga, Kiambu, Thika and Maragua Districts the maize crop is wilting or with retarded growth due to water stress experienced during the previous dekads of Nyeri, and Muranga.

Eastern Province:

Cloudy conditions with light rains were experienced in parts Embu and Meru districts bordering Mt. Kenya maize crop is at the maturity stage in most places while harvesting of beans crop is complete with poor yields being reported. Maize crops in some parts of these regions are experiencing water stress especially in the lowland areas of Mbeere District due to insufficient rainfall resulting in poor grain formation and subsequent reduction in yields being forecasted.

To the south (Machakos, Mwingi and Kitui), cool and dry conditions dominated this region during the period under review. Due to insufficient rainfall during the season in these regions has resulted in total crop failure in most farms. The government machineries should be put on alert on food insecurity for the vulnerable livelihoods.

Animal /human conflict is expected especially in areas bordering the national parks due to food and water scarcity.

Coast Province:

Moderate to heavy rainfall was received in this region during the review period. Maize crop is at the maturity stage with above yeilds being expected. Grass/browse for livestock and game is also doing well and the animals are healthy.

North Eastern Province:

Light or no rains at all was experience during the dekad resulting in inadequate pastures and water for for both animal and domestic use. The pastoralists may be expected to start migration earlier than usual in search of pastures and water. (Figs.1, 2, & 5)

Western Province:

Moderate to heavy rainfall was received in several places in this region (Kakamega, Bungoma, Busia, Eldoret and Kitale). Maize crop is at flowering stage and corresponding to normal growth with normal yields expected (Figs.1 & 2).

Nyanza and Central Rift Valley:

Moderate to heavy rainfall was received in this region. Crops are doing well and corresponding to normal growth. Areas around Kisii the maize crop is at the flowering stage and hailstone damage on 22nd July 2008 may affect the final yield expected. Harvesting of the bean crop is complete with normal yields being reported. In the same region land preparation for the next season crop has started. (Figs 1 & 2)

Northern and Southern Rift Valley:

Little or no rain was reported in the Southern Rift and North Western regions during the dekad. Hot and dry conditions dominated in these regions resulting in inadequate pastures and water sources for both domestic and animal use. For the game parks/reserves, inadequate pasture, browse and water may force animal migration and animal /human conflict in search of food and water. In the farming areas of Southern Rift Valley lack of adequate rainfall has resulted in seasonal crop failure. (Figs.1-3).

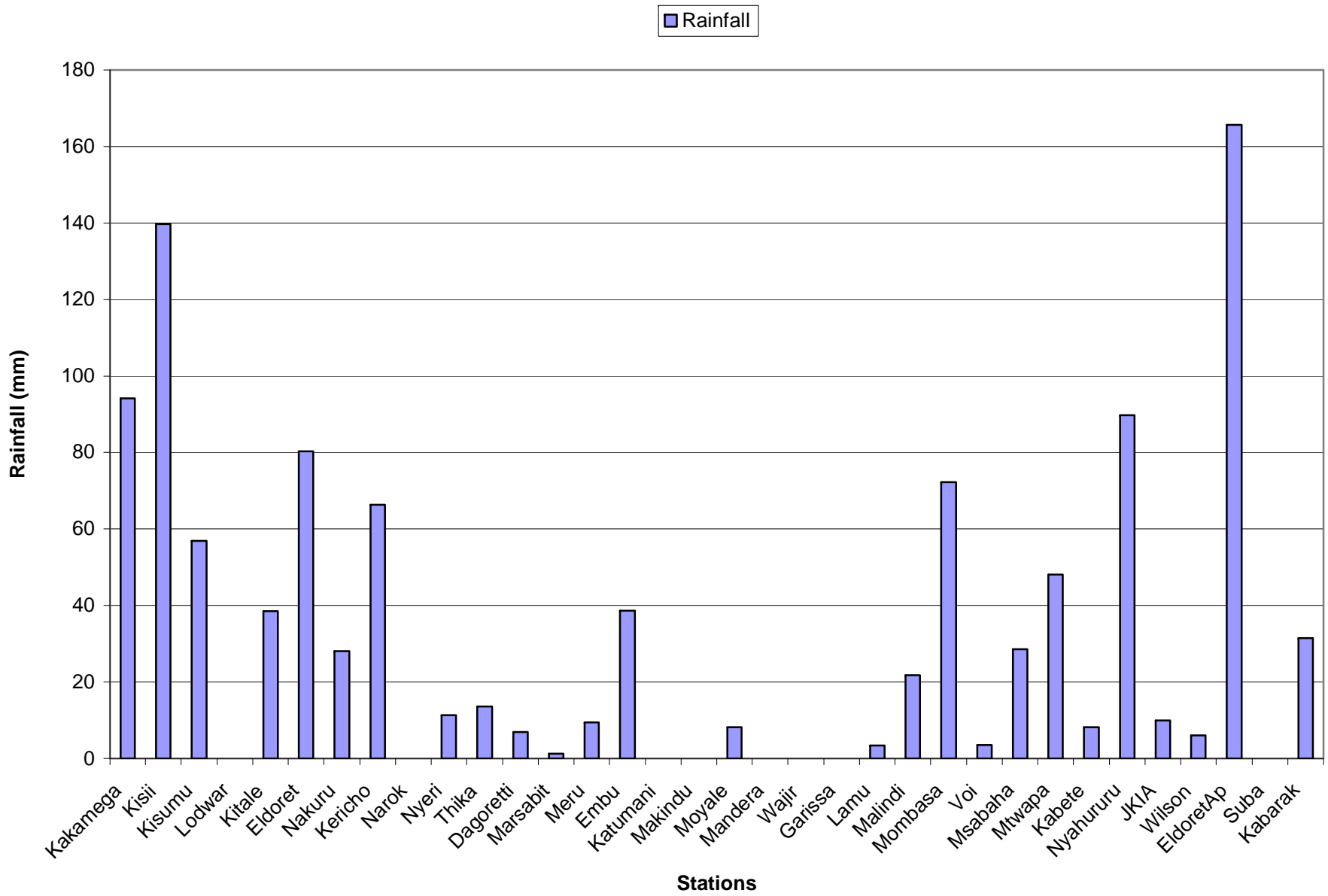


Fig. 1: Actual Rainfall (21st to 31st July 2008)

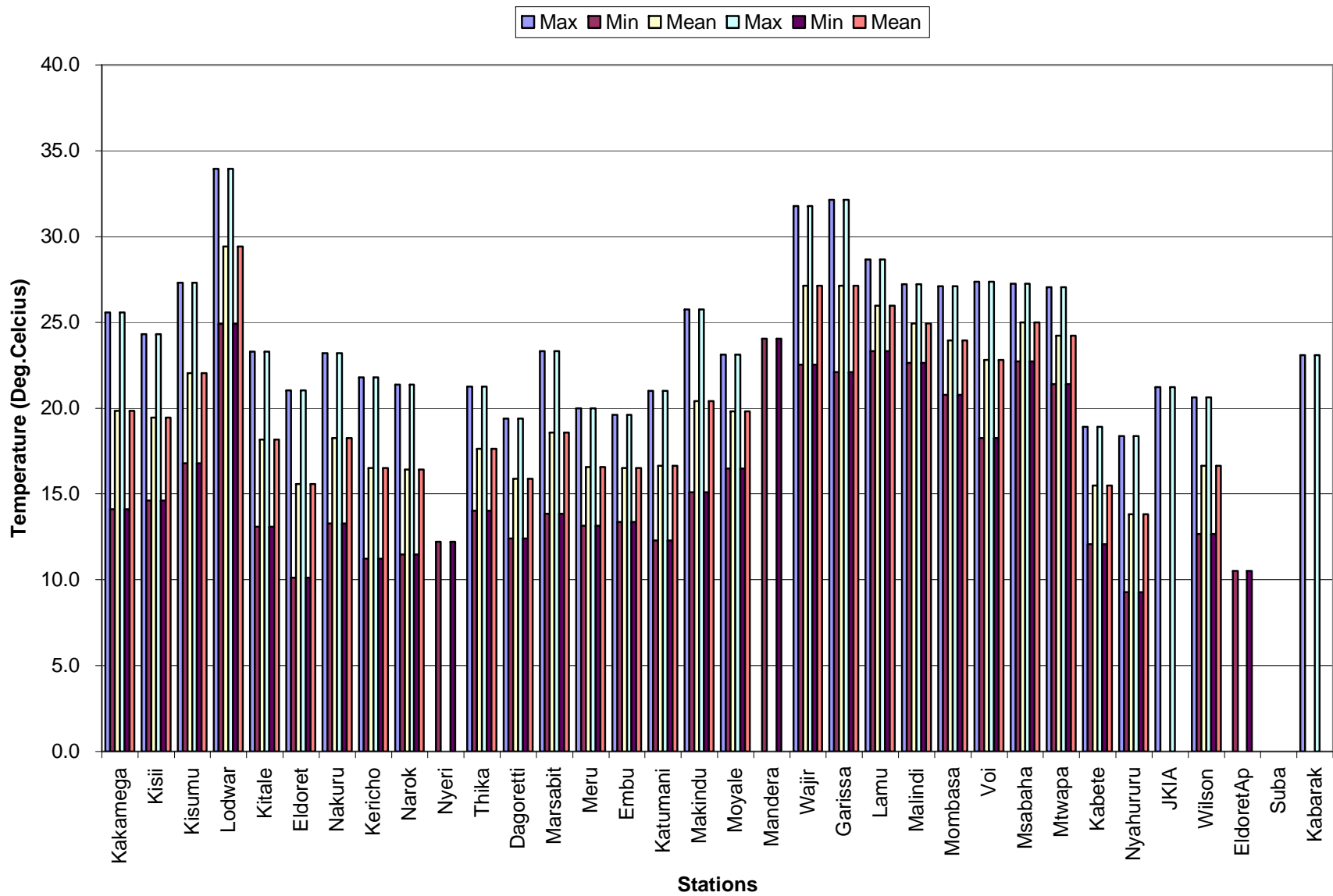


Fig 3: Mean Temperatures (21st to 31st July 2008)

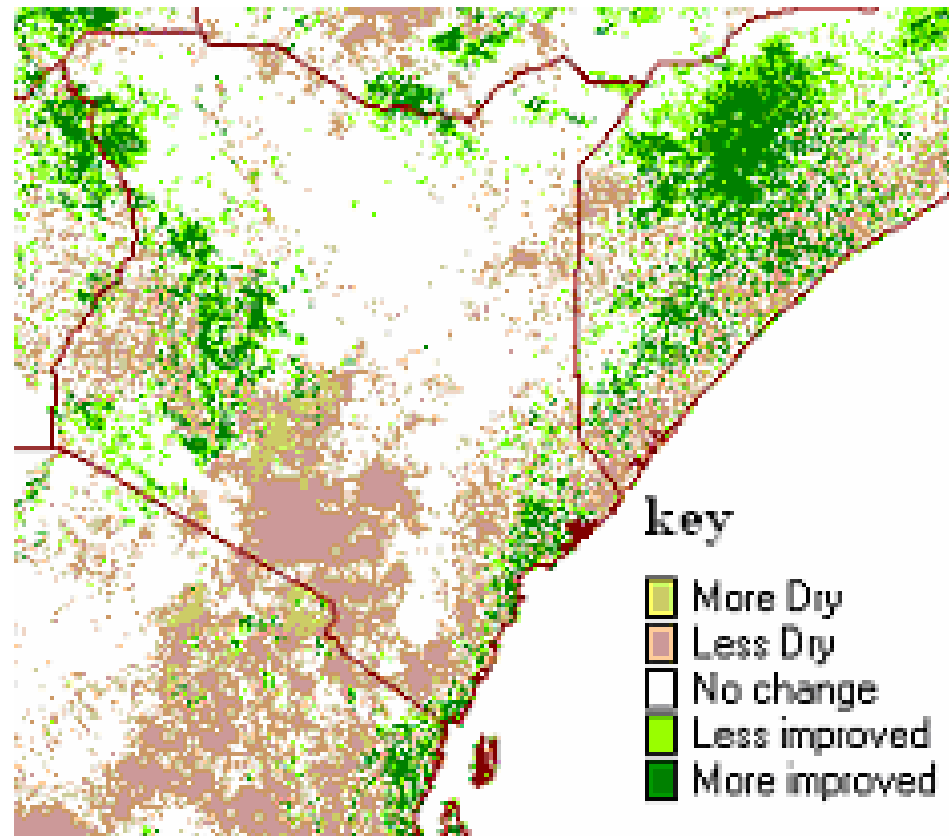


Fig. 5: Normalized Difference Vegetation Index (21st to 31st July 2008)

EXPECTED WEATHER AND CROP CONDITIONS DURING THE NEXT 10 DAYS (1st –10th August 2008).

During the next 10 days (1st –10th August 2008), Western, Nyanza and Central Rift Valley regions are expected to experience moderate rainfall over several places. Crops are expected to continue doing well and correspond to normal growth with normal yields being forecasted.

Central Highlands, Nairobi area and its environs, are expected to experience cool/cold and cloudy conditions with light rains or drizzles in several places. For the highland areas of Nyeri and Kirinyaga districts bordering Mt. Kenya crops are expected to

continue doing well with yields below normal being forecasted, but for the low land areas crop performance will not be reversed after the damage by water stress conditions experienced earlier on in the season.

In Eastern Province regions of Embu and Meru districts bordering Mt Kenya are expected to experience cool and cloudy conditions with light rains or drizzles in few places. Crops are expected to continue experiencing water stress with yields below normal being forecasted. In South-Eastern lowlands, dry and cool conditions are expected with normal yields being expected.

The coastal regions are expected to experience light to moderate rainfall. Crops are expected to continue doing well and correspond to normal growth with above normal yields being expected.

In the pastoral regions of Northwestern, Northeastern and South Rift Valley districts hot and dry conditions are expected to prevail, resulting in poor pastures and inadequate drinking water for both human and animal use. The pastoralists may be forced to migration in search of pastures and water.

In summary maize crop is at the maturity stage in most places of Western and areas of Rift Valley around Kitale and Eldoret and is corresponding to normal growth. For some parts of Central and Eastern Provinces the maize crop is at the maturity stage while the bean crop is at the maturity/harvesting stages with poor yields expected due poor grain filling.

This product should be used in conjunction with Kenya Meteorological Department weather forecasts

Contact information

Kenya Meteorological Department

Agrometeorological Division

Dagoretti Corner, Ngong Road,

P.O. Box 30259, 00100 GPO, Nairobi

Tel: +254 (0)20 3867880-7/3876957/3873682

Fax: +254 (0)20 3876955

E-mail: agromet@meteo.go.ke

Website: www.meteo.go.ke

©2008 The Kenya Meteorological Department