



KMD

AGROMETEOROLOGICAL BULLETIN

KENYA METEOROLOGICAL DEPARTMENT

19th Dekad, 1st to 10th July 2008

Issue No. 19/2008, Season: JJA

HIGHLIGHTS

- *During the 19th Dekad i.e. 1st to 10th July 2008 moderate to heavy rainfall was experienced over the Western, parts Central Rift Valley and the Coastal Region with Kakamega, Kisii, Kitale, Kericho, Eldoret, Nakuru, Msabaha, Malindi, Lamu, Mombasa, Mtwapa, 69.1, 57.6, 66.4, 40.0, 48.3, 5.2, 21.0, 24.3, 23.4, 9.6, 28.9mm respectively. Central and parts of Eastern province bordering Mt, Kenya experienced light to moderate rainfall. The rest of the country remained generally dry with cool and cloudy conditions being experienced in Central districts and Nairobi area.*
- *Maximum (daytime) temperatures remained relatively low over most parts of the country due to cloudy skies. Night temperatures were relatively cold especially over some parts of Central highlands, Nairobi area and parts of Central Rift Valley, with Nyahururu recording a minimum temperature of 5 deg. Celsius on 8th July 2008 with a Dekadal mean of 7.3 deg Celsius. (Figs.3 & 4)*
- *The pastoral regions and game parks of Northern Rift Valley, Southern Rift Valley, North Eastern and South Eastern lowlands, experienced light or no rains at all resulting in inadequate pastures and water. (Figs.1, 4 & 5).*

CROP AND WEATHER REVIEW

(21st to 30th June 2008)

Central Province and Nairobi area:

Cool and cloudy conditions with light rains/drizzle were experienced over most parts of Central province, Nairobi area and its environs. Maize crop is at the flowering stage in most places while bean crop is at the harvesting stage with poor yields being reported due to insufficient rainfall during flowering stage. The maize crops in these regions are experiencing severe water stress especially in the lowland areas of Kirinyaga, Muranga, Maragua and Thika Districts due to insufficient rainfall, which is highly required at this stage of grain formation.

Eastern Province:

Cloudy conditions with light rains were experienced in parts Embu and Meru Districts bordering Mt. Kenya. Maize crop is at the maturity stage in most places while harvesting of beans crop is almost complete with poor yields being reported. Maize crops in some parts of these regions are experiencing water stress especially in the lowland areas of Mbeere District due to insufficient rainfall resulting in poor grain formation and subsequent reduction in yields.

To the south (Machakos, Mwingi and Kitui), cool and dry conditions dominated this region during the period under review. Reports from the region indicate that there was total crop failure in most farms due to lack of rainfall in the previous decade. The government machineries should be put on alert on food insecurity for the vulnerable livelihoods.

Coast Province:

Light to moderate rainfall was received in this region during the review period. Weeding is complete in most areas of Mtwapa, Mshabaha and Lamu. Maize crop is at the flowering stage and is corresponding to normal growth with yields above normal expected. Grass for livestock is also doing well and the animals are healthy.

North Eastern Province:

Rainfall was very poor in most parts of the province. The pastoralists may still be expected to start migration earlier than usual in search of pastures and water. (Figs.1, 2, & 5)

Western Province:

Moderate to heavy rainfall was received in several places in this region (Kakamega, Bungoma and Busia). Maize crop is at flowering stage and corresponding to normal growth. Maize crop is at the flowering stage. Harvesting of beans is complete with normal yields reported (Figs.1 & 2).

Nyanza and Central Rift Valley:

Light rainfall was received in few places in this region. Crops are doing well and corresponding to normal growth. Areas around Kisii the maize crop is at the flowering stage and the harvesting of the bean crop is complete with normal yields being reported. In the same region land preparation for the next season crop has started. (Figs 1 & 2)

Northern and Southern Rift Valley:

Little or no rain was reported in the Southern Rift and North Western regions during the dekad. Hot and dry conditions dominated in these regions resulting in inadequate pastures and water sources for both domestic and animal use. In the farming areas of Southern Rift Valley lack of adequate rainfall has resulted in seasonal crop failure. (Figs.1-5).

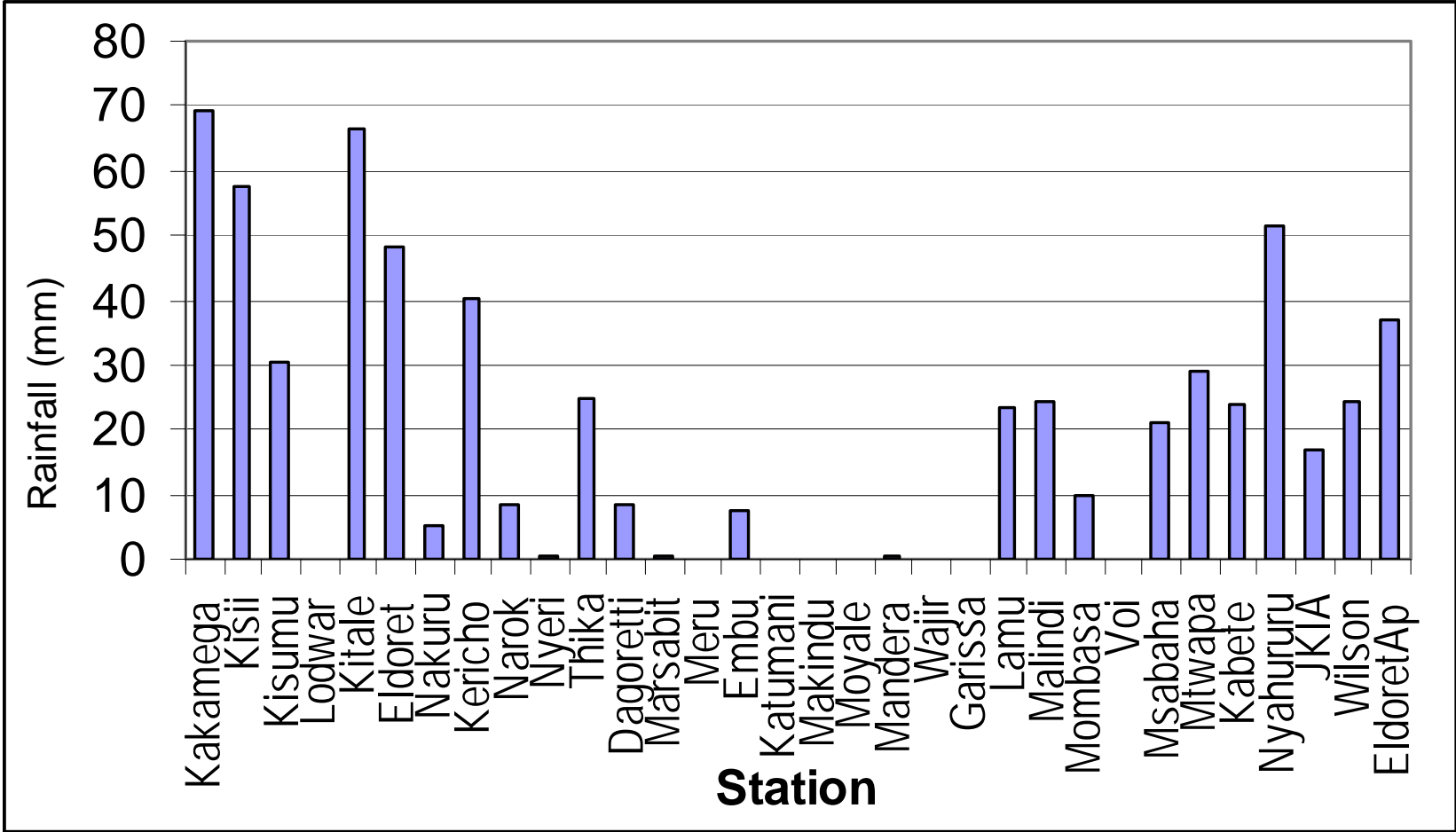


Fig. 1: Actual Rainfall (1st to 10th July 2008)

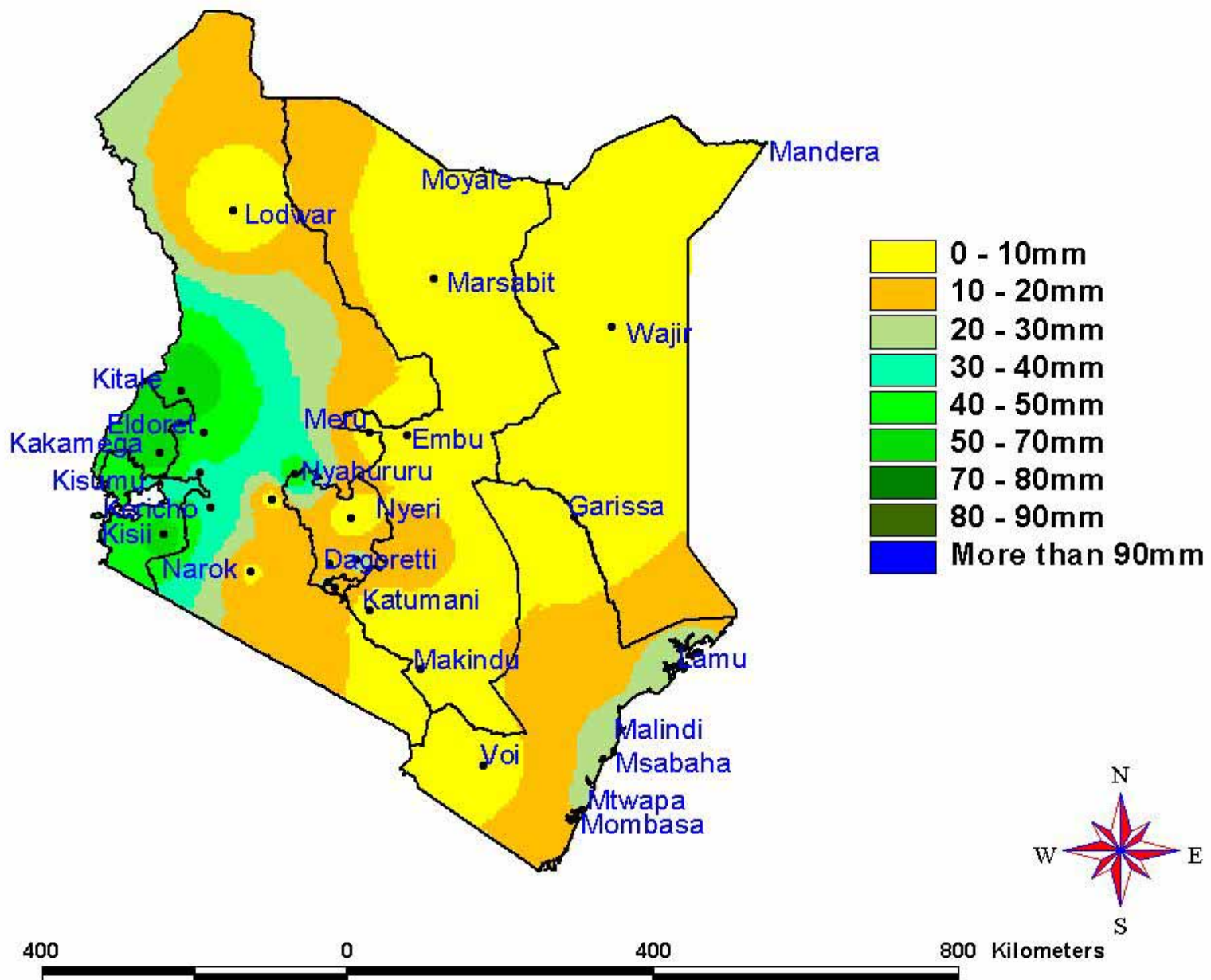


Fig. 2: Actual Rainfall (1st to 10th July 2008)

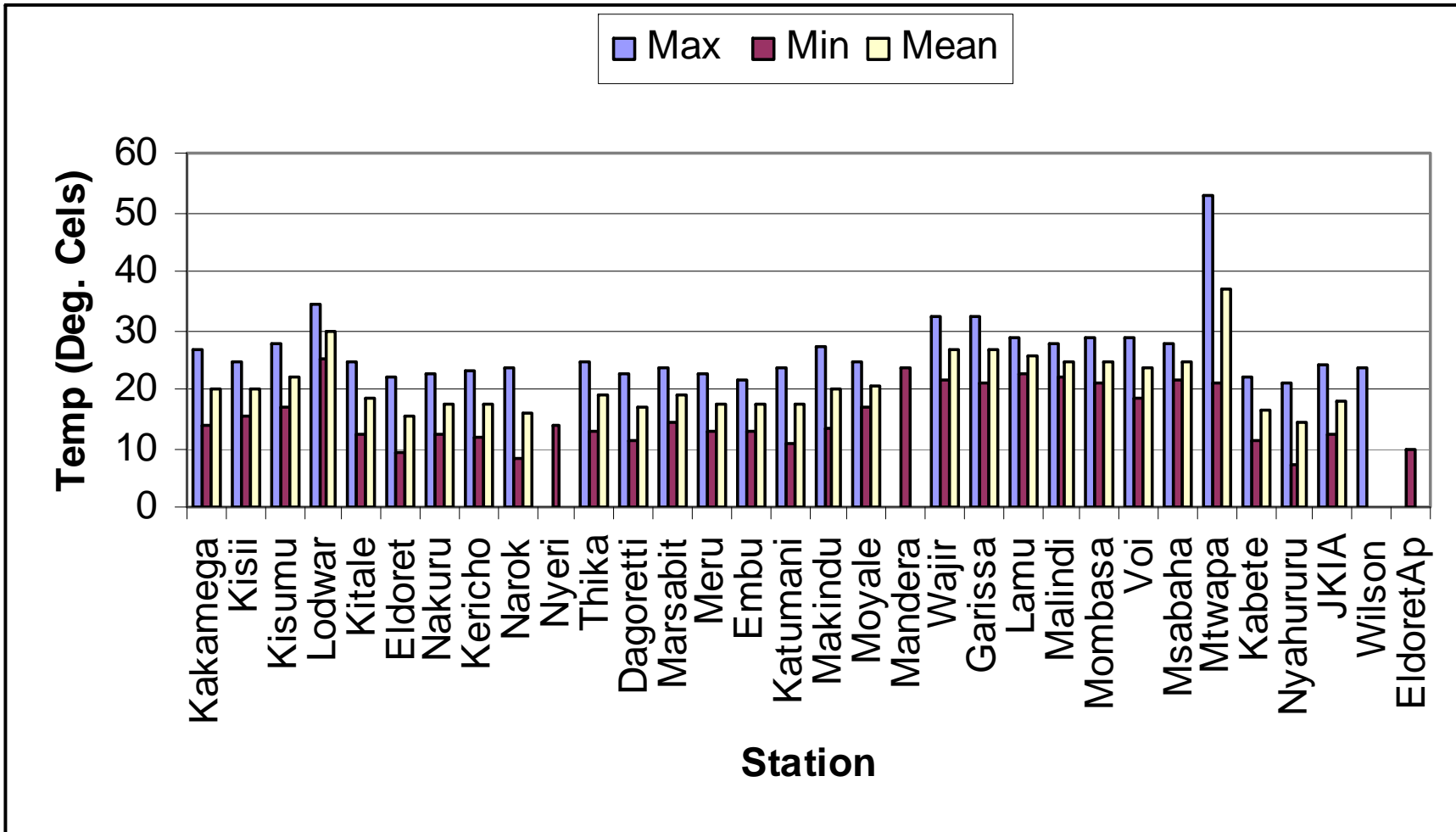


Fig 3: Mean Temperatures (1st to 10th July 2008)

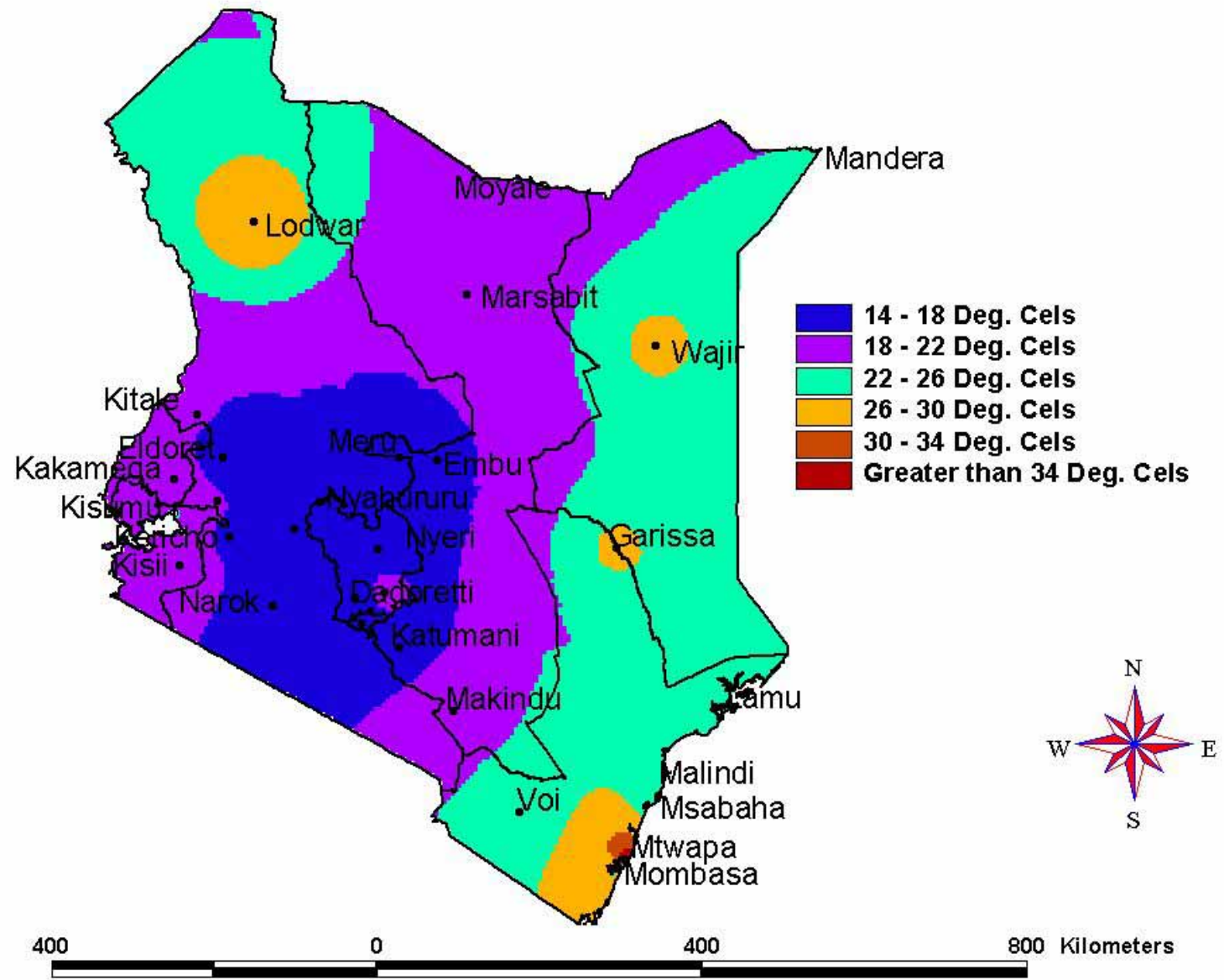


Fig 4: Mean Temperature (1st to 10th July 2008)

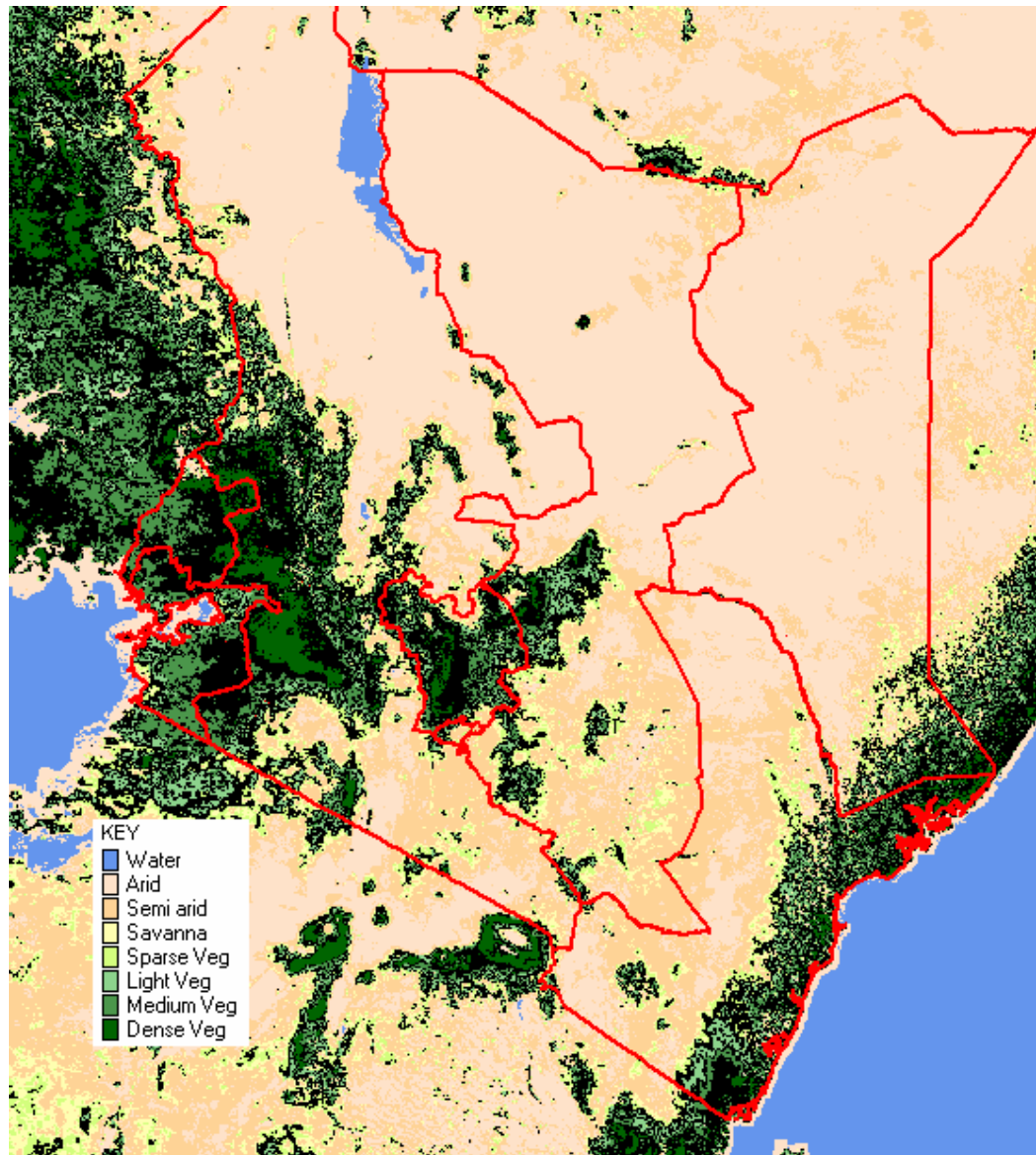


Fig. 5: Normalized Difference Vegetation Index (1st to 10th July 2008)

EXPECTED WEATHER AND CROP CONDITIONS DURING THE NEXT 10 DAYS (21st –31st July 2008).

During the next 10 days (**21st –31st July 2008**), Western, Nyanza and Central Rift Valley regions are expected to experience moderate to heavy rainfall over several places. Crops are expected to continue doing well and correspond to normal growth.

Central Highlands, Nairobi area and its environs, are expected to experience cool/cold and cloudy conditions with light rains or drizzles in few places. Crops are expected to continue experiencing water stress especially in the lowland areas resulting in poor grain formation with poor yields being forecasted. For the highland areas of Nyeri and Kirinyaga districts bordering Mt. Kenya crops are expected to continue doing well and correspond to normal growth.

In Eastern Province regions of Embu and Meru districts bordering Mt Kenya are expected to experience cool and cloudy conditions with light rains or drizzles in few places. Crops are expected to continue doing well. In South-Eastern lowlands, dry and cool conditions are expected. Crops are expected to continue wilting due to lack of rainfall resulting in stunted crops with poor or no yields being forecasted.

The northern coastal regions are expected to experience moderate to heavy rainfall. These are regions in the environs of Malindi and Lamu. Crops are expected to continue doing well and correspond to normal growth with above normal yields being expected. The Southern Coastal strip (Mombasa, Mtwapa and Kilifi) are expected to receive below normal rainfall. However, this will not affect the yields since the maize crop have reached full ripeness and ready for harvest..

In the pastoral regions of Northwestern, Northeastern and South Rift Valley districts hot and dry conditions are expected to prevail, resulting in poor pastures and inadequate drinking water for both human and animal use. The pastoralists may be forced to migration in search of pastures and water.

In summary maize crop is at the flowering stage in most places of Western and areas of Rift Valley around Kitale and Eldoret and is corresponding to normal growth. For some parts of Central and Eastern Provinces the maize crop is at the flowering/maturity stages while the bean crop is at the maturity/harvesting stages with poor yields expected due to inadequate rainfall during the season resulting in poor grain filling.

This product should be used in conjunction with Kenya Meteorological Department weather forecasts

Contact information

Kenya Meteorological Department

Agrometeorological Division

Dagoretti Corner, Ngong Road,

P.O. Box 30259, 00100 GPO, Nairobi

Tel: +254 (0)20 3867880-7/3876957/3873682

Fax: +254 (0)20 3876955

E-mail: agromet@meteo.go.ke

Website: www.meteo.go.ke

©2008 The Kenya Meteorological Department