



KMD

# AGROMETEOROLOGICAL BULLETIN

## KENYA METEOROLOGICAL DEPARTMENT

12th Dekad, 21st to 30th April 2008

Issue No. 12/2008,      Season: MAM

### HIGHLIGHTS

- *During the 12th Dekad i.e. 21st to 30th April 2008 moderate to heavy rainfall was experienced over most parts of the country, except for parts of Northwestern districts and South Eastern Lowlands, which remained generally sunny and dry during the review period with Kakamega, Kisii, Kericho, Thika, Dagoretti, Embu, Moyale and Mtwapa recording 115.5, 137.1, 36.4, 108.7, 63.2, 205.7, 91.4 and 118.1mm respectively*
- *Mean daily temperatures were relatively low over most parts of the country due to the increase in cloudiness and rainy conditions. Night temperatures were relatively warmer especially over some parts of Central Rift Valley, with Nyahururu recording a Dekadal minimum mean of 14.9 deg. Celsius. (Fig.2)*
- *The pastoral regions and game parks of Southern Rift Valley, North Eastern and South Eastern lowlands, experienced moderate rainfall and this resulted in improved pasture regeneration and water sources. Minimal incidences of human animal conflict over food and water have been reported in some areas bordering Game Parks and Game reserves of Rift Valley, Eastern and North Eastern provinces. However, for the pastoral and game parks of Northern Rift Valley, hot and dry condition prevailed resulting in poor pastures regeneration and water sources. (Figs.1 & 3).*

## **CROP AND WEATHER REVIEW (21st to 30th April 2008)**

### **Central Province and Nairobi area:**

Moderate to heavy rainfall was received over Central province, Nairobi area and its environs. Weeding and top dressing is taking place. Most crops are at the emergence stages and are corresponding to normal growth and with crop performance above normal in some areas around Nyeri with no adverse effects reported.

### **Eastern Province:**

Moderate to heavy rainfall was received over these region during the Dekad especially in areas bordering Mt Kenya. Weeding and top dressing is taking place in most places of these regions and crops are at the emergence stage and are corresponding to normal growth and with no adverse incidences reported.

To the south (Machakos, Mwingi and Kitui), light to moderate rainfall was experienced in several areas. Weeding is taking place in most parts of these regions and the maize crop is at the emergence stage. Beans are in the flowering stage and are corresponding to normal growth. During the review period the only adverse effect reported was too much sun in areas around Makindu. For the mixed type of farming (crops and livestock, there was a improvement in pastures regeneration and water sources.

### **Coast Province:**

Moderate to heavy rainfall was received in several areas in the region during the review period. Weeding is taking place ongoing in most areas and crops are corresponding to normal growth.

### **North Eastern Province:**

Moderate to heavy rainfall was experienced in several parts of the Moyale, Marsbit Mandera, Wajir and Garissa Districts resulting in improved pastures regeneration and improved water sources for both domestic and animal use. (Figs.1, 2, 3)

### **Western Province:**

Moderate to heavy rainfall was received in several places in this region (Kakamega, Bungoma and Busia). Weeding and top dressing is taking place in most parts of these regions and most crops are at the emergence stage with crop performance above normal being reported. (Fig.1).

### Nyanza and Central Rift Valley:

Moderate to heavy rainfall was received in several places in this region. Weeding is taking place in several areas of these regions. Crops are at the emergence stage and are corresponding to normal growth. (Figs 1)

### Northern and Southern Rift Valley:

Light to moderate rainfall was experienced in the Southern Rift Valley regions resulting in improved pastures regeneration and water sources for both domestic and animal use. The Northern Western Rift Valley around Lodwar and Lokichoggio experienced Light or no rains at all resulting in depressed pasture regeneration and inadequate water sources for both human and animal use. (Figs.1, 2, 3)

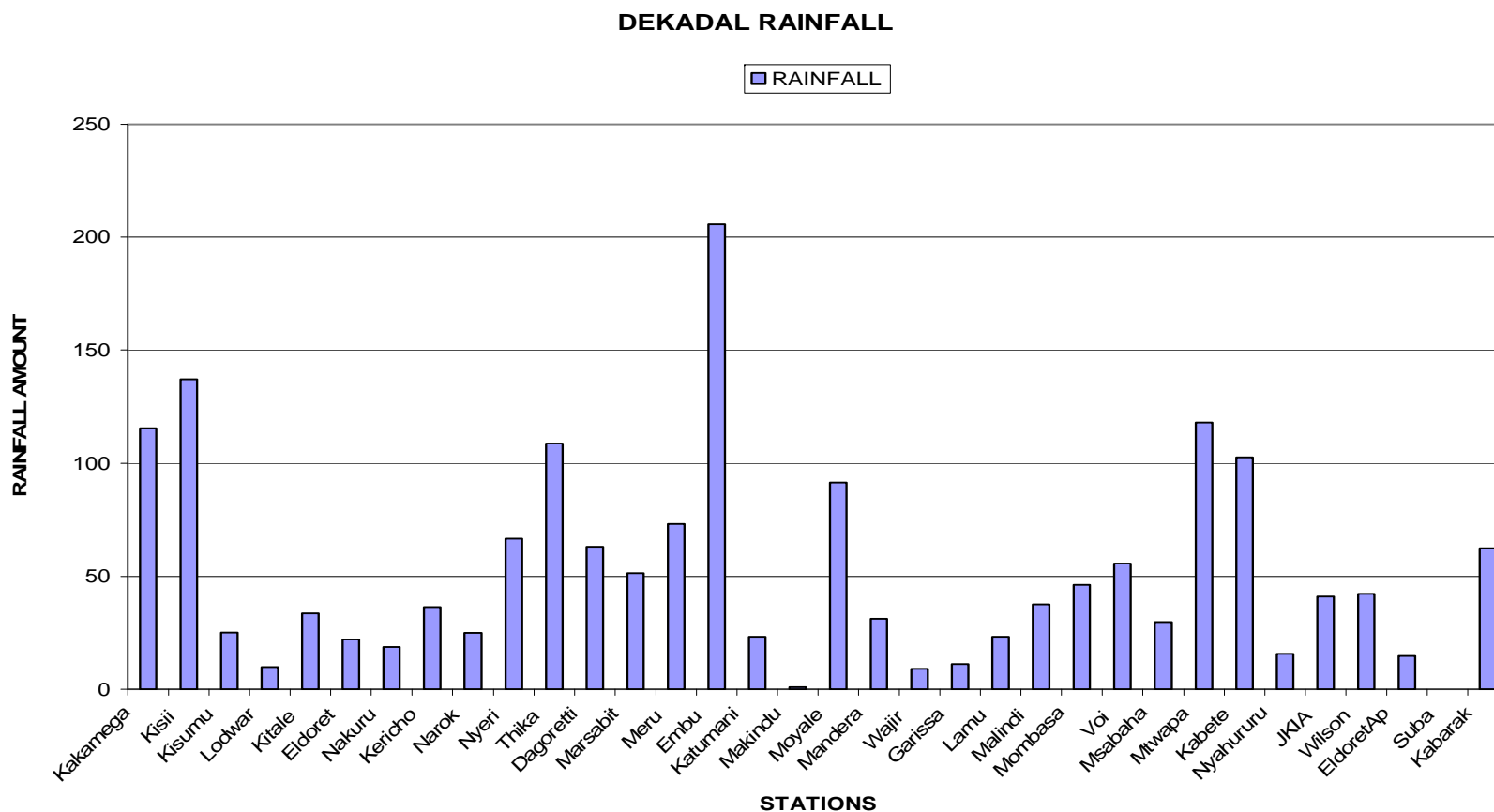
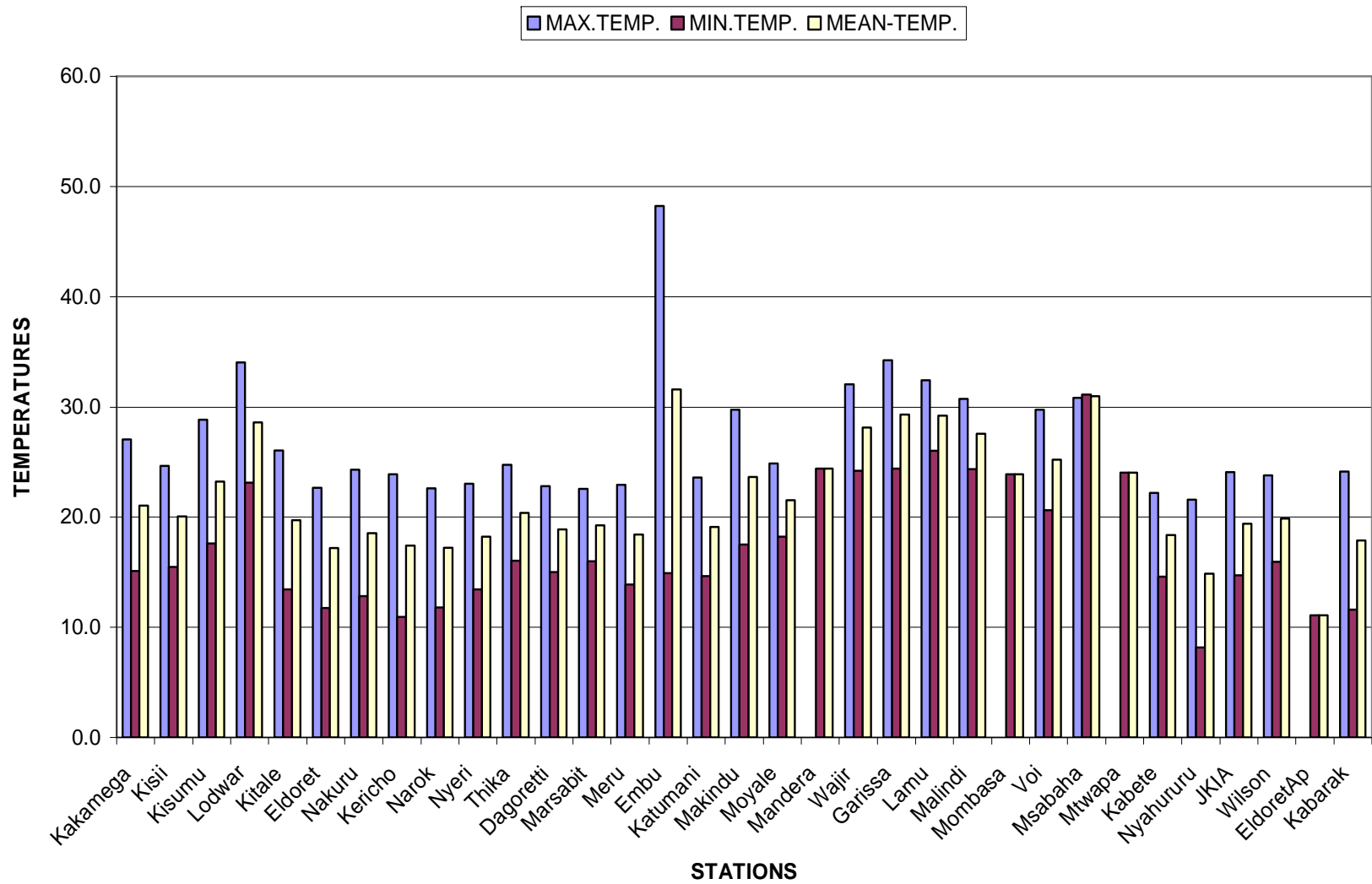
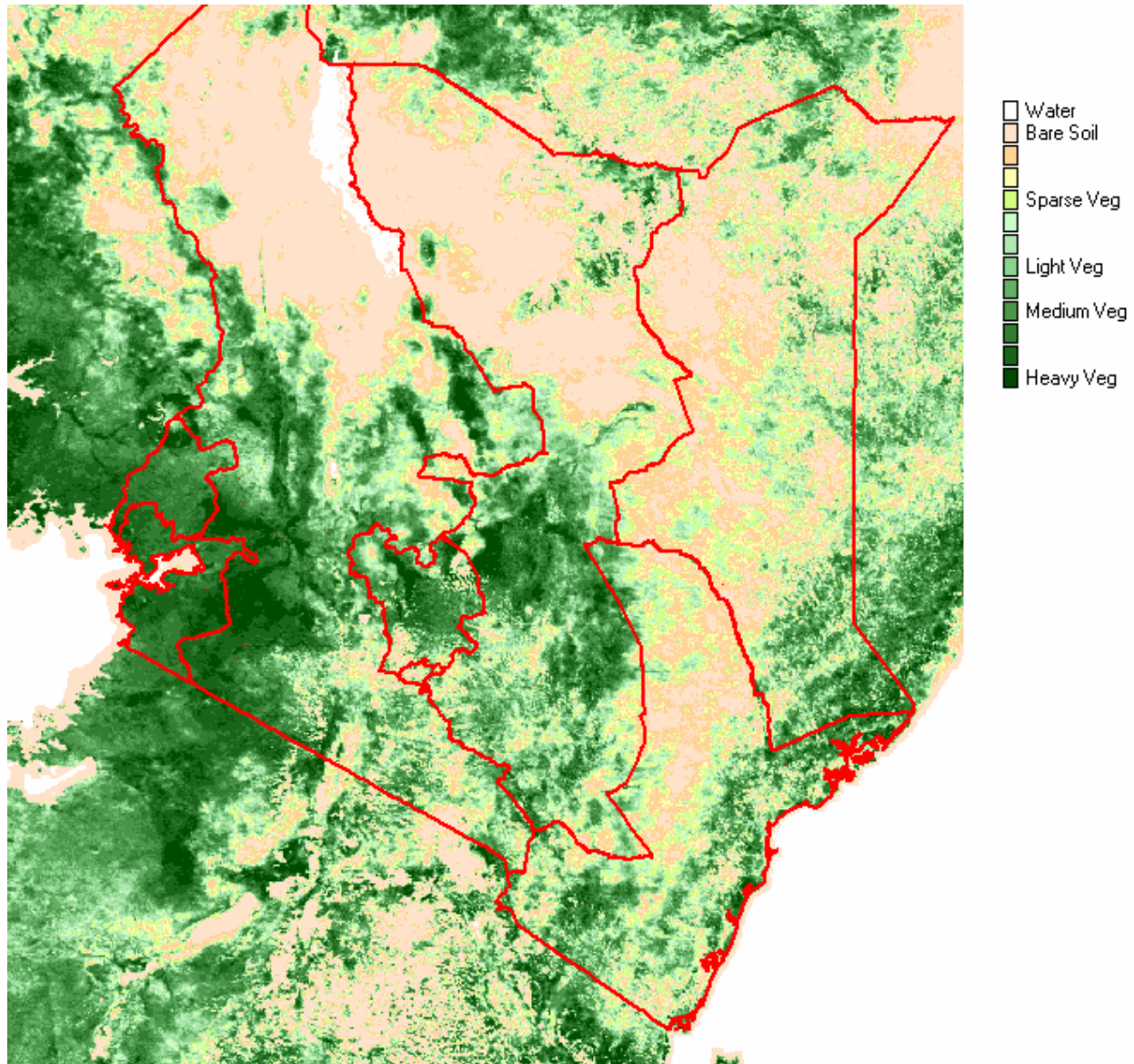


Fig. 1: Actual Rainfall (21st to 30th April 2008)

## DEKADAL TEMPERATURES



**Fig 2: Mean Temperatures (21st to 30th April 2008)**



**Fig. 3: Normalized Difference Vegetation Index (21st to 30th April 2008)**

## **EXPECTED WEATHER AND CROP CONDITIONS DURING THE NEXT 10 DAYS 1st –10th May 2008).**

During the next 10 days Western, Nyanza and Central Rift Valley regions are expected to experience light to moderate rainfall over several places. Crops are expected to continue doing well. Weeding and top dressing is also expected to continue.

Central Highlands, Nairobi area and its environs, are expected to receive light to moderate rainfall in few places. Most crops are at the emergence stage and are expected to continue doing well and correspond to normal growth. Weeding and top dressing is also expected to continue.

In Eastern Province regions bordering Mt Kenya are expected to experience light to moderate rainfall. Crops are expected to continue doing well. In South-Eastern lowlands, moderate rainfall is expected over several places. Crops are expected to continue doing well. Weeding and top dressing is also expected to continue in both regions. Crops in regions around Makindu are expected to experience water stress due to depressed rainfall.

The coastal regions are expected to experience moderate rainfall. Weeding is expected to continue in several places.

In the pastoral regions of Northwestern districts hot and dry conditions are expected to prevail, resulting in poor pasture regeneration and inadequate drinking water. However, the pastoral regions of North Eastern and Southern Rift Valley light to moderate rainfall is expected over several places, resulting in improved pastures regeneration and water sources for domestic, wildlife and animal use.

In summary Weeding and top dressing are expected to continue in most parts of the country. Crops are at the emergence stage in most places and are expected to continue doing well.

In the pastoral regions and game parks improved pasture regeneration and water sources are expected, except for Northwestern where dry and hot conditions are expected to prevail resulting in depressed pasture regeneration and inadequate water sources.

***This product should be used in conjunction with Kenya Meteorological Department weather forecasts***

***Contact information***

***Kenya Meteorological Department***

***Agrometeorological Division***

***Dagoretti Corner, Ngong Road,***

***P.O. Box 30259, 00100 GPO, Nairobi***

***Tel: +254 (0)20 3867880-7/3876957/3873682***

***Fax: +254 (0)20 3876955***

***E-mail: [director@meteo.go.ke](mailto:director@meteo.go.ke)***

***Website: [www.meteo.go.ke](http://www.meteo.go.ke)***

©2008 The Kenya Meteorological Department