



KMD

AGROMETEOROLOGICAL BULLETIN

KENYA METEOROLOGICAL DEPARTMENT

10th Dekad, 1st to 10th April 2008

Issue No. 10/2008, Season: MAM

HIGHLIGHTS

- *During the 10th Dekad i.e. 1st to 10th April 2008 most parts of the country experienced dry conditions except for parts of Nyanza, Eastern, Central, Nairobi and its environs and Coast Provinces which experienced depressed rainfall with. Kisii, Kericho, Kisumu, Machakos, Makindu, Voi, Dagoretti, Wilson Airport, Thika and Lamu recording a Dekadal rainfall total of 26, 44.1, 30.8, 22.6, 7.3, 31.2, 9.5, 33.8, 47.0 , and 50.9 mm respectively.*
- *Mean daily temperatures were relatively high in most parts of the country due to low cloud cover with Lodwar recording day temperatures above 36.5 deg Celsius. Night temperatures were relatively low due to lack of cloud cover (Thermal Insulation), especially over some parts of Western and Central Rift Valley, with Nyahururu recording a minimum temperature of 4.7 deg Celsius on 8th April and a Dekadal minimum mean of 6.7 deg Celsius. (Fig.2)*
- *The pastoral regions and game parks of Northern and Southern Rift Valley, North Eastern and South Eastern lowlands, experienced significantly light or no rains at all resulting in poor pasture regeneration and decreased water sources due to increased evaporation. Incidences of human animal conflict over food and water have been reported in some areas bordering Game Parks and Game reserves of Rift Valley, Eastern and North Eastern provinces. (Figs.1 & 3).*
- *The long rains season has started over most, pars of the country with depressed rainfall performance during the review period.*

CROP AND WEATHER REVIEW

(1st to 10th April 2008)

Central Province and Nairobi area:

Light to Moderate rainfall was received over Central province, Nairobi area and its environs. Land preparations and planting are almost complete in most parts in these regions as we progress into the Long rain season. Most crops are at the emergence stages and are corresponding to normal growth.

Eastern Province:

Light rainfall was received over these region during the Dekad. Land preparations and planting is almost complete in most parts in these regions and most crops are at the emergence stages and are corresponding to normal growth.

To the south (Machakos, Mwingi and Kitui), moderate to heavy rainfall were received in several areas Land preparations and planting are almost complete in most parts in these regions and most crops are at the emergence stages and are corresponding to normal growth. For the mixed (crops and livestock) type of farming, this was a relief also for pastures regeneration and water sources.

Coast Province:

Light to Moderate rainfall was received in several areas in the region during the review period. Land preparations and planting are ongoing.

North Eastern Province:

Light or no rains at all were experienced in several parts of the Province Mandera, Wajir and Garissa Districts posing a risk of n pastures and inadequate water sources. However, light rainfall was experienced in marsabit and Moyale districts, this conditions poses risks of of poor pasture rejuvenation and inadequate water sources for both domestic and animal use. (Figs.1, 2, 3)

Western Province:

Light to Moderate rainfall was received in few places of this region (Kakamega, Bungoma and Busia). Land preparation Planting is almost complete in most parts in these regions and most crops are at the emergence stages and are corresponding to normal growth.. (Fig.1).

Nyanza and Central Rift Valley:

Light to Moderate rainfall was received in few places in this region. Land preparations and planting are complete in several areas of this region. Crops are at the emergence stages and are corresponding to normal growth. Around Kisii maize and beans are in the emergence and are corresponding to normal growth. Planting with no adverse effects reported. (Figs 1)

Northern and Southern Rift Valley:

Light or no rains at all was experienced in these regions resulting in poor pastures regeneration and inadequate water sources for both domestic and animal use. (Figs.1, 2, 3)

DEKADAL RAINFALL

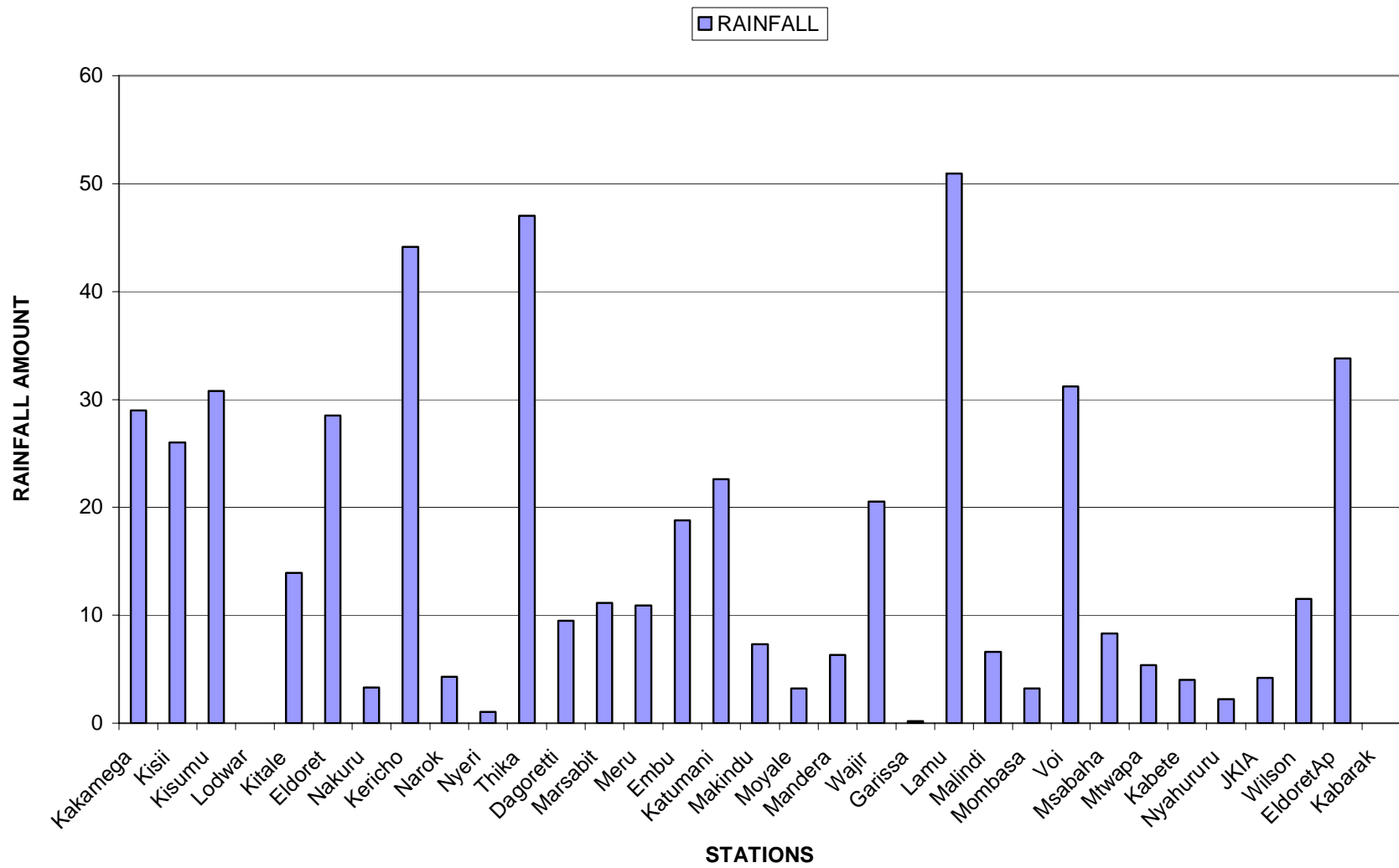


Fig. 1: Actual Rainfall (1st to 10th April 2008)

DEKADAL TEMPERATURES

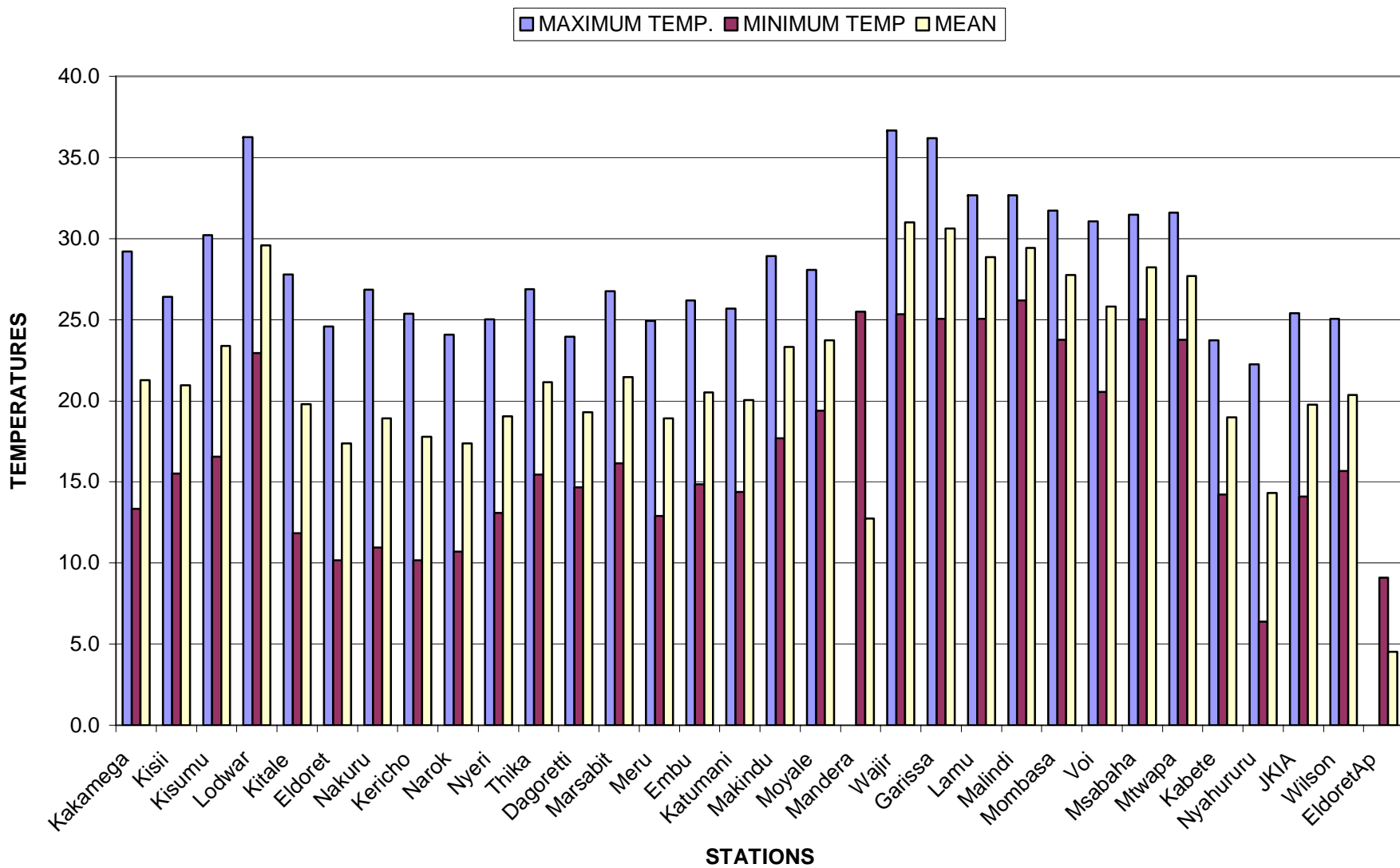


Fig 2: Mean Temperatures (1st to 10th April 2008)

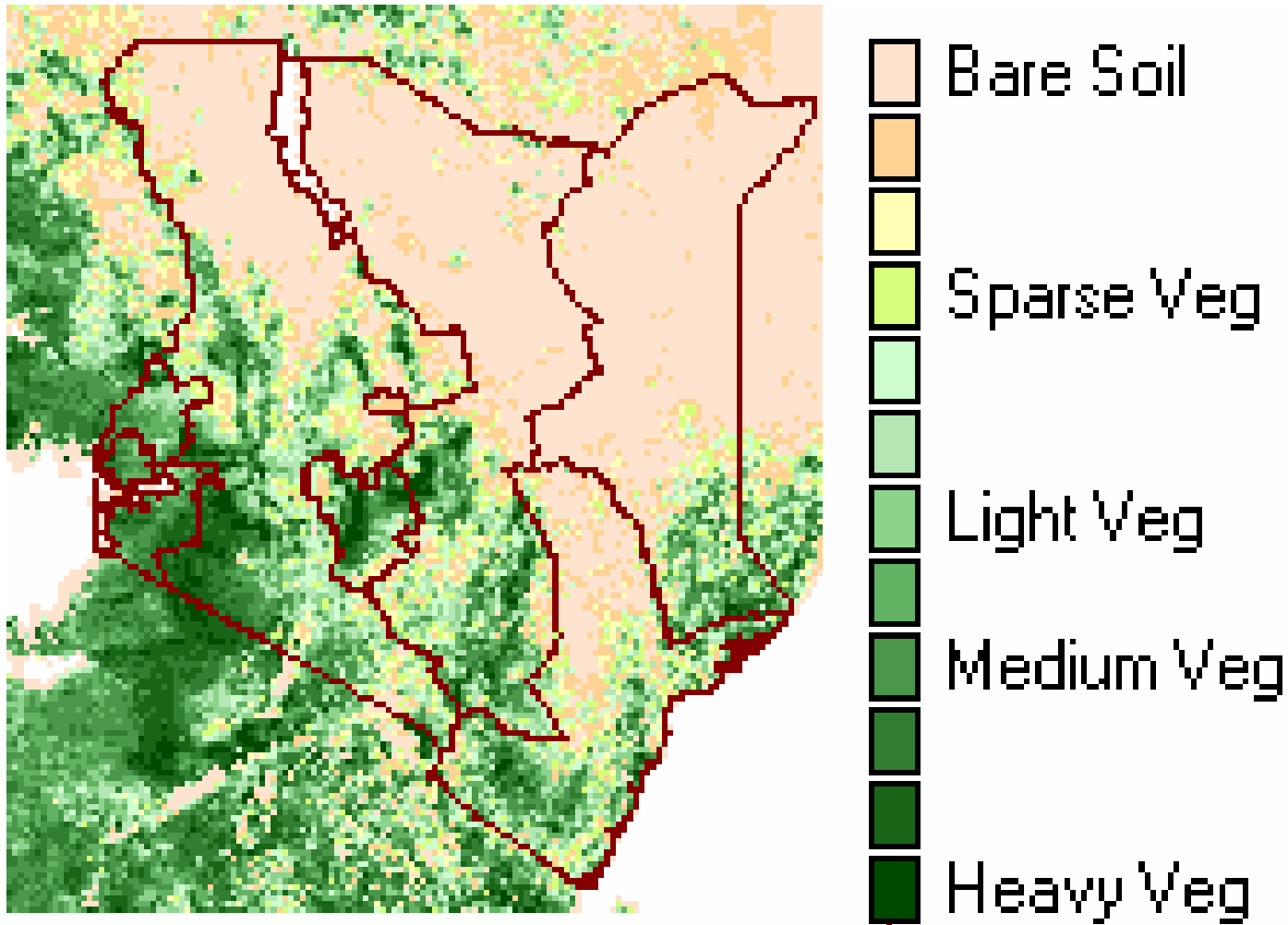


Fig. 3: Normalized Difference Vegetation Index (1st to 10th April 2008)

EXPECTED WEATHER AND CROP CONDITIONS DURING THE NEXT 10 DAYS (11th –20th April 2008).

During the next 10 days Western, Nyanza and Central Rift Valley regions are expected to experience moderately to heavy rainfall over several places. Crops are expected to continue doing well and corresponding to normal growth.

Central Highlands, Nairobi area and its environs, are expected to receive moderate rainfall in several places. Land preparations and planting are expected to complete. Most crops are at the emergence stage and are expected to continue doing well.

In Eastern Province regions bordering Mt Kenya are expected to experience moderate to heavy rainfall. Crops are expected to continue doing well. In South Eastern lowlands, moderate to heavy rainfall is expected. Land preparations and planting are expected to complete. Crops are expected to continue doing well.

The coastal regions are expected to experience moderate to heavy rainfall. Land preparations are expected to be complete and planting is expected to commence in several places.

In the pastoral regions of Northwestern districts hot and dry conditions are expected to prevail, resulting in poor pasture regeneration and inadequate drinking water. However, the pastoral regions of North Eastern and Southern Rift Valley moderate rainfall is expected over several places, resulting in improved pastures regeneration and water sources for domestic, wildlife and animal use.

In summary land preparations and planting are expected to complete over most regions of the country as we progress into the long rains season. Crops are at the emergence stages in most parts the country and are expected to continue doing well. In the pastoral regions and game parks improved pasture regeneration and water sources are expected.

This product should be used in conjunction with Kenya Meteorological Department weather forecasts

Contact information

Kenya Meteorological Department

Agrometeorological Division

Dagoretti Corner, Ngong Road,

P.O. Box 30259, 00100 GPO, Nairobi

Tel: +254 (0)20 3867880-7/3876957/3873682

Fax: +254 (0)20 3876955

E-mail: director@meteo.go.ke

Website: www.meteo.go.ke

©2008 The Kenya Meteorological Department