



KMD

AGROMETEOROLOGICAL BULLETIN

KENYA METEOROLOGICAL DEPARTMENT

7th Dekad, 1st to 10th March 2008

Issue No. 7/2008, Season: FM

HIGHLIGHTS

- *During the 7th Dekad i.e. 1st to 10th March 2008 several parts of the country received some light to moderate rainfall. This rainfall was experienced over the Western, Central Rift Valley, Central Highlands, Nairobi Area and its environs, Southeastern lowlands and the Coastal Regions with Kakamega, Kisii, Kitale Thika, Dagoretti, Embu, Meru, Katumani, and Mombasa recording a Dekadal total of 6.4, 15.7, 4.5, 16.8, 3.2, 25.8, 35.4, 23.3, 42.0 mm respectively North Western and North Eastern region remained dry during the reporting period .*
- *Mean daily temperatures were relatively high over most parts of the country with Northern and North Eastern regions of the country recording maximum day temperature of above 38 deg Celsius. Low night temperatures were recorded over some parts of Central Rift Valley with Nyahururu recording a minimum of 4.9 deg Celsius on 3rd March 2008. (Fig.2)*
- *The pastoral regions and game parks of Northern and Southern Rift Valley, North Eastern and South Eastern lowlands, experienced light or no rains at all during the entire period resulting in inadequate pastures and water. Incidences of human animal conflict over food and water have been reported in some areas bordering Game Parks and Game reserves of Rift Valley, Eastern and North Eastern provinces (Figs.1 & 3).*
- *The long rains season are expected to start during the third Dekad of March in several regions except the Coastal regions and North Eastern province where the season is expected to start during the first Dekad of April.*

CROP AND WEATHER REVIEW

(1st to 10th March 2008)

Central Province and Nairobi area:

Light to moderate rainfall were received over Central province, Nairobi area and its environs.

Land preparations in these regions have started in most areas in readiness for the Long rain season which is expected to start at the third Dekad of march. However, in the highlands regions of Nyeri and Kirinyaga harvesting of the maize crop almost complete in several areas, with below normal yeilds being reported.

Eastern Province:

Light to moderate rainfall were received over these region during the Dekad. Crops have reached full maturity and harvesting is complete in most places with below normal yeilds being reported. Land preparations are ongoing in most areas readiness for the long rains.

To the south (Machakos, Mwingi and Kitui), light to moderate rainfall were received in some areas and this was a relief for pastures (Normally refered to as “grass rains”) ahead of the long awaited Long Rains Season. Land preparations are ongoing several areas in readiness for the long rains expected to start during the third Dekad of March.

Coast Province:

Light to moderate rainfall were received in several areas in the region during the review period. Land preparations have started in readiness for the long rains which are expected to start during the first Dekad of April.

North Eastern Province:

Hot and dry conditions continued to be experienced over this region resulting in poor pastures and inadequate water sources for both domestic and animal use. This poses risk of human and animal conflicts and pastoralists may be forced to migrate to other regions in search of pasture and water and at times are received with hostilities by other communities resulting into inter-clan crashes. The long rains are expected to start during the first Dekad of April. (Figs.1, 2, 3)

Western Province:

Insignificant light rainfall was received in some parts of this region (Kakamega, Bungoma and Busia). Land preparations/planting is in progress in readiness for the long rain season expected to start during the second dekad of March. (Fig.1).

Nyanza and Central Rift Valley:

Light to moderate rainfall was received in some parts of this region. Land preparations in readiness of long rains which is expected to start during the second dekad of March is ongoing. In areas around Kisii planting has started in readiness of the long rains season which is expected to start during the second dekad of March. (Figs 1)

Northern and Southern Rift Valley:

Light rains were received in the Southern Rift Valley regions which was a relief for pastures regeneration and water ahead of the long rains (Normally referred to as “grass rains”). The Northern Rift Valley remained hot and dry during the review period. The long rains season is expected to start during the third Dekad of March. (Figs. 1, 2, 3)

DEKADAL RAINFALL

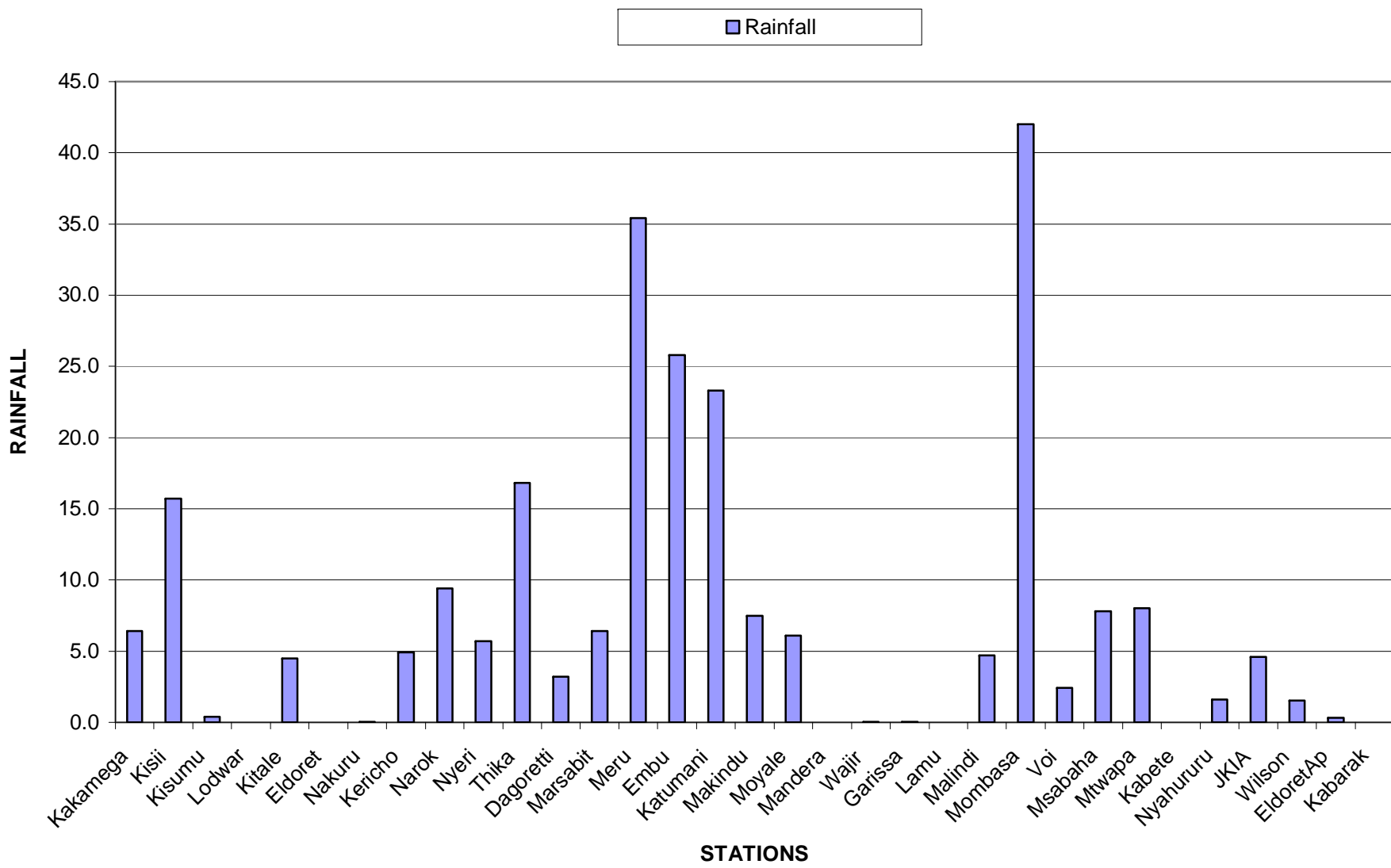


Fig. 1: Actual Rainfall (1st to 10th March 2008)

DEKADAL TEMPERATURES

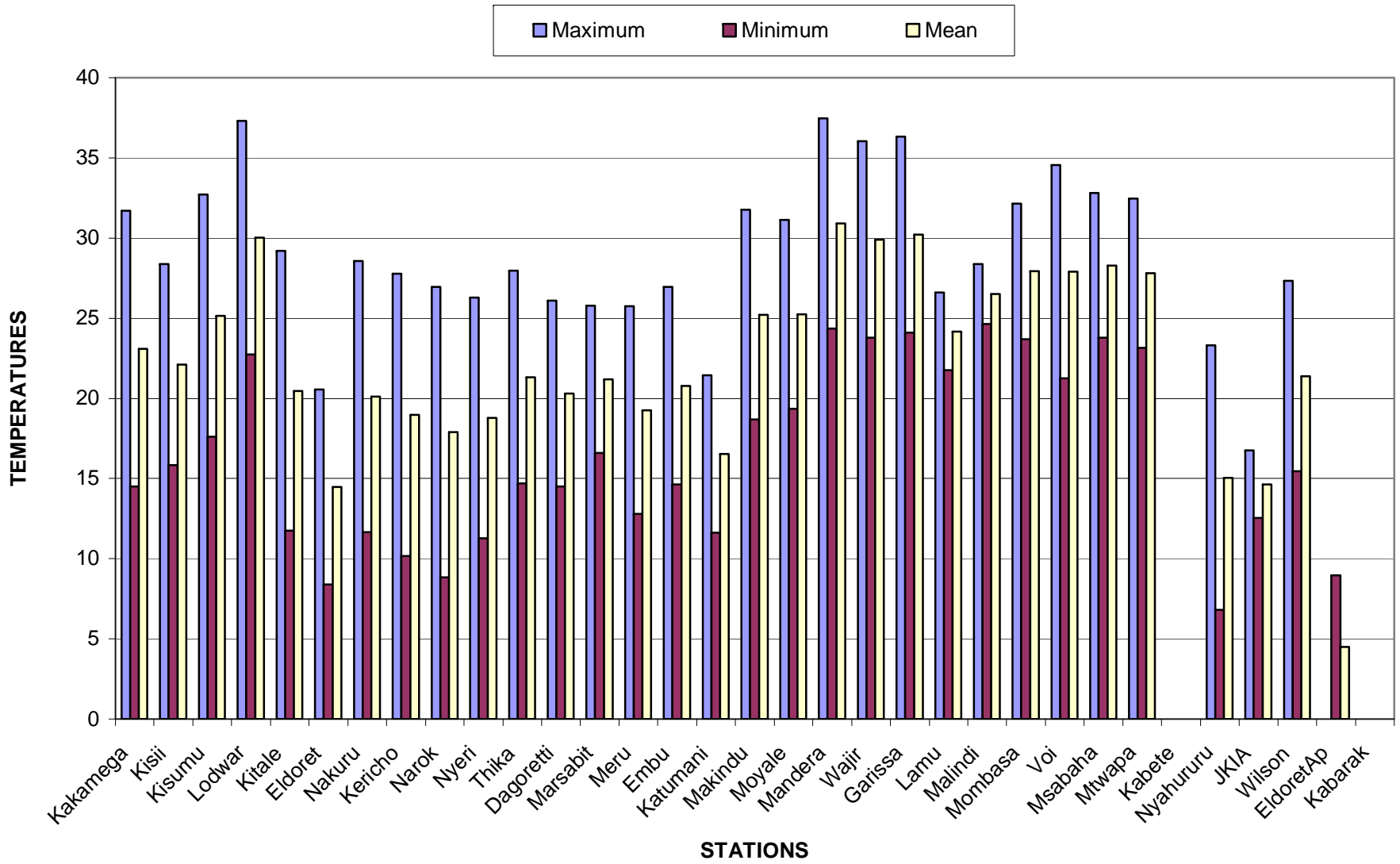


Fig 2: Mean Temperatures (1st to 10th March 2008)

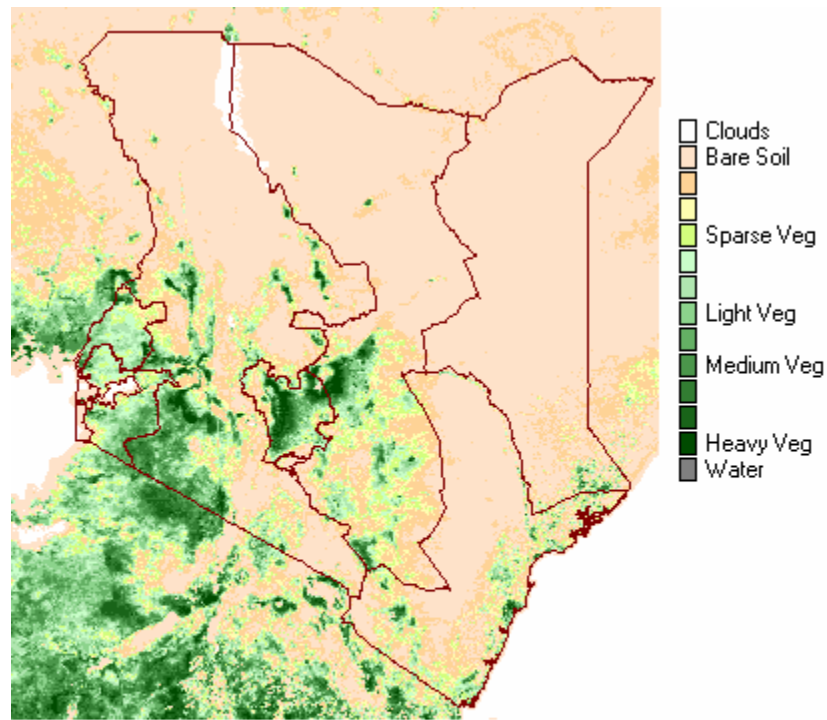


Fig. 3: Normalized Difference Vegetation Index (1st to 10th March 2008)

EXPECTED WEATHER AND CROP CONDITIONS DURING THE NEXT 10 DAYS (11th –20th March 2008).

During the next 10 days Western, Nyanza and Central Rift Valley regions are expected to experience light to moderate rainfall over a few places. Land preparations are commencing in some regions whereas in other areas around Kisii planting is taking place.

Central Highlands, Nairobi area and its environs, are expected to receive light to moderate rainfall in few places as we approach the long rains season. Harvesting is complete in most places with reports of below normal yields. Land preparations are expected to continue in several places in readiness for the long rains.

In South Eastern lowlands, hot and dry conditions are expected to prevail with interments interval of light rains as we approach the rain season. Harvesting of maize crop complete in most places with reports of below normal yields in areas which were not adversely affected by the prolonged drought. Land preparations are expected to commence in several places in readiness for the long rains.

In the pastoral regions of North Eastern and North Western including Southern Rift Valley dry and hot conditions are expected to continue resulting in poor pastures and scarce water sources for domestic, wildlife and animal use posing a risk of human and animal conflict in search of food and water.

In summary land preparations are expected to commence over most regions of the country in readiness of the long rains season. Post harvest yields indicate below normal yields in several places due to poor rainfall performance during the short- rains season and therefore, the Government machineries should be put on alert over food security for the most vulnerable livelihoods.

In the pastoral regions and game parks dry and hot conditions are expected to prevail resulting in inadequate pastures and water for both domestic and animal use.

This product should be used in conjunction with the daily 24-hour forecast issued by the Department.

This product should be used in conjunction with KMD weather forecasts

Contact information

Kenya Meteorological Department

Agrometeorological Division

Dagoretti Corner, Ngong Road,

P.O. Box 30259, 00100 GPO, Nairobi

Tel: +254 (0)20 3867880-7/3876957/3873682

Fax: +254 (0)20 3876955

E-mail: director@meteo.go.ke

Website: www.meteo.go.ke

©2008 The Kenya Meteorological Department