



KMD

AGROMETEOROLOGICAL BULLETIN

KENYA METEOROLOGICAL DEPARTMENT

2nd Dekad, 11 to 20 January 2008

Issue No. 2/2008, Season: OND

HIGHLIGHTS

- *During the 2nd Dekad i.e. 11th – 20th January 2008, Significantly heavy rainfall was experienced over the Central Highlands, Nairobi Area and its environs, North Eastern, South Eastern lowlands and the Coastal region with Nyeri recording 69.0, Wajir 90.4, Machakos 47.9, and Mombasa 28.1mm respectively. The rest of the country received light rainfall.*
- *Mean daily temperatures were relatively high over most parts of the country. However Low night temperatures were recorded over some parts of Central Rift Valley with Nyahururu recording 6.6 deg Celsius on 17th January 2008.. (Fig.3)*
- *The pastoral regions and game parks of Northern and Southern Rift Valley, experienced light rainfall. North Eastern and South Eastern lowlands received significant rainfall. This was a relieve for pasture regeneration and improved water sources for both human and animal use. (Figs.1, 2 & 4).*

CROP AND WEATHER REVIEW

(11th to 20th January 2008)

Central Province and Nairobi area:

Significant rainfall was experienced in the Central province, Nairobi area and its environs.

Most crops are at the flowering stage and are stunted due to the prolonged dry spells experienced previously. The adverse effects on the crops could not be reversed despite the heavy rainfall received during the review period. Due to this below normal yields are expected in most parts of these regions.

Eastern Province:

Moderately heavy rainfall was received over the central parts of the province bordering Mt. Kenya (Embu, Meru and Mbeere). Crops are in the flowering stage and are stunted due to water stress experienced during the previous dry period. To the south (Machakos, Mwingi and Kitui), Light to moderate rainfall was experienced. Crops are at the flowering stage and are stunted due to the prolonged dry spells experienced previously. The rainfall experienced during the review period will not reverse the present crop status but instead will cause rotting of beans in the regions where the crop was ready for harvesting.

Coast Province:

Moderate rainfall was received over this region during the review period. Generally plants were affected by the previous dry spells.

North Eastern Province:

Moderately to heavy rainfall was received over this region resulting in improved pasture regeneration and improved water sources for both domestic and animal use despite high temperature and the associated high evaporation rates. (Figs.1, 2, 3 & 4)

Western Province:

Light rainfall was received in some parts of this region (Kakamega, Bungoma and Busia).Crops are generally doing well and corresponding to normal growth. However, in some areas the crops are being affected by insufficient rainfall. (Figs.1-3).

Nyanza and Central Rift Valley:

Light rainfall was received in this region (Kisii, Kisumu, Kitale Eldoret Nakuru and Nyahururu). In Kisii Maize is at the flowering stage and beans have reached full ripeness and both are corresponding to normal growth.

Northern and Southern Rift Valley:

Light or no rains were received over this regions (Lodwar, Lokichoggio and Kajiado) resulting in poor pasture regeneration and scarce water sources. (Figs. 4)

Dekadal Rainfall

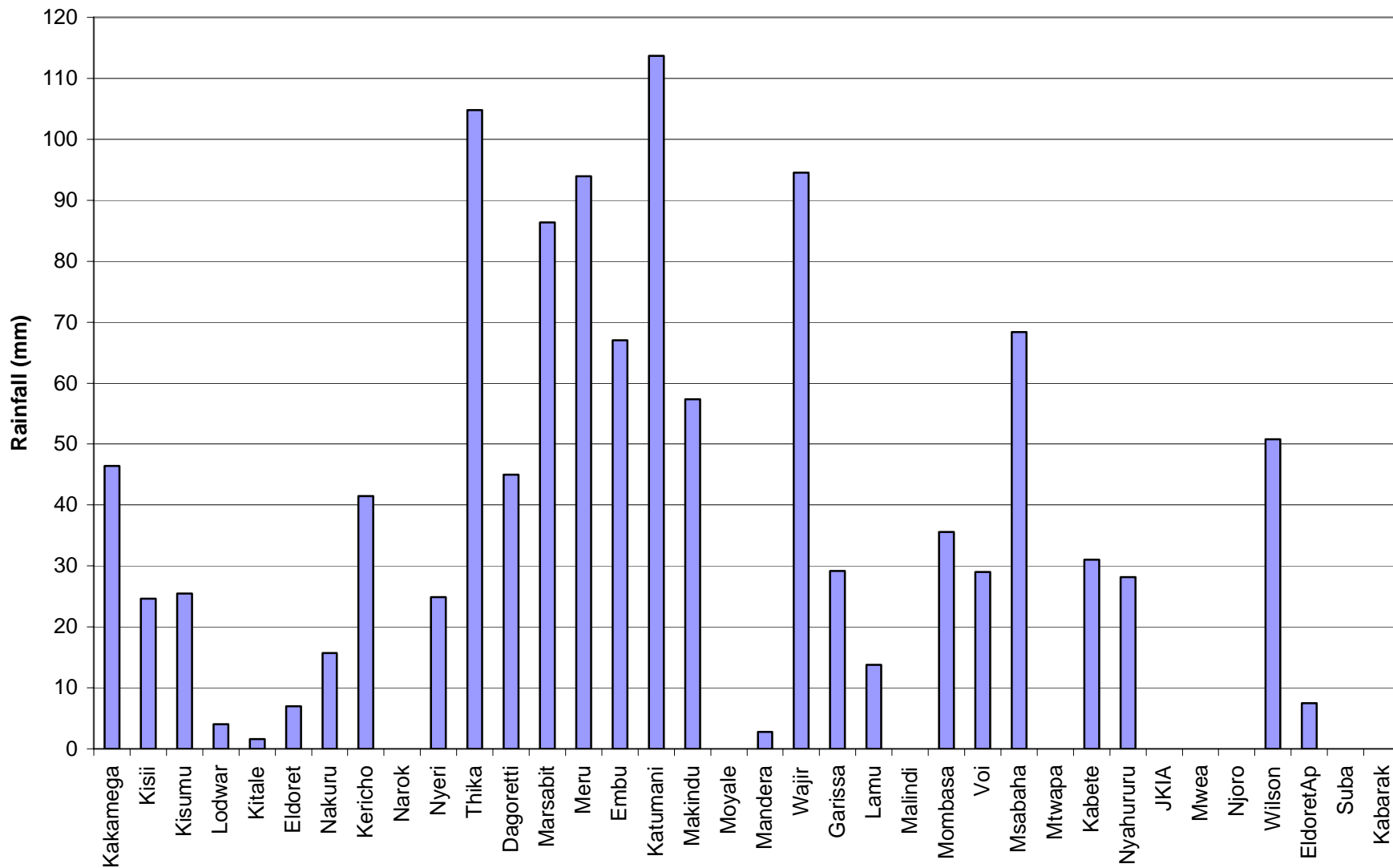


Fig. 1: Actual Dekadal Rainfall (11th to 20th January 2008)

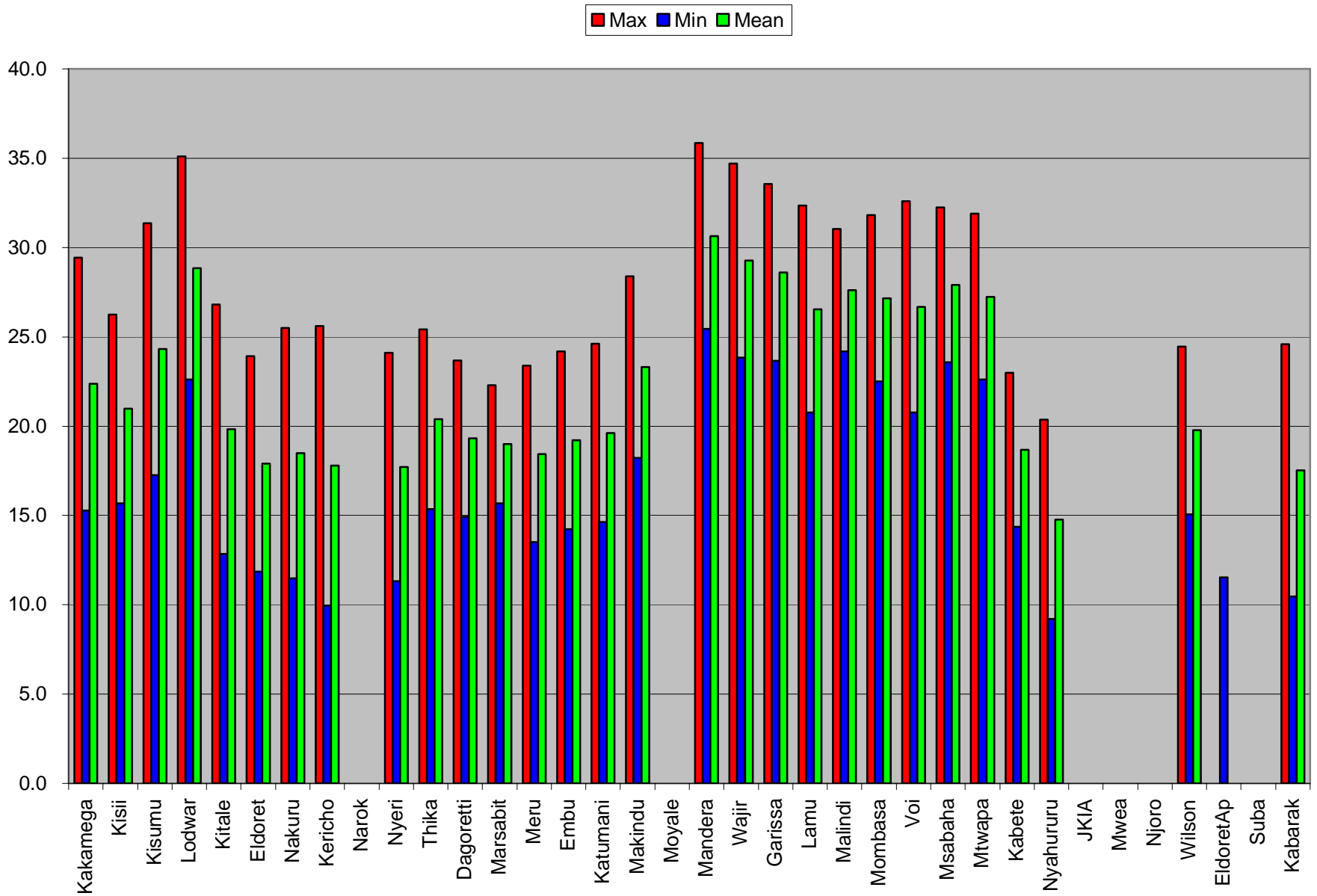


Fig 3: Max, Min and Mean decadal Temperatures (in deg Celsius from 11th to 20th January 2008)

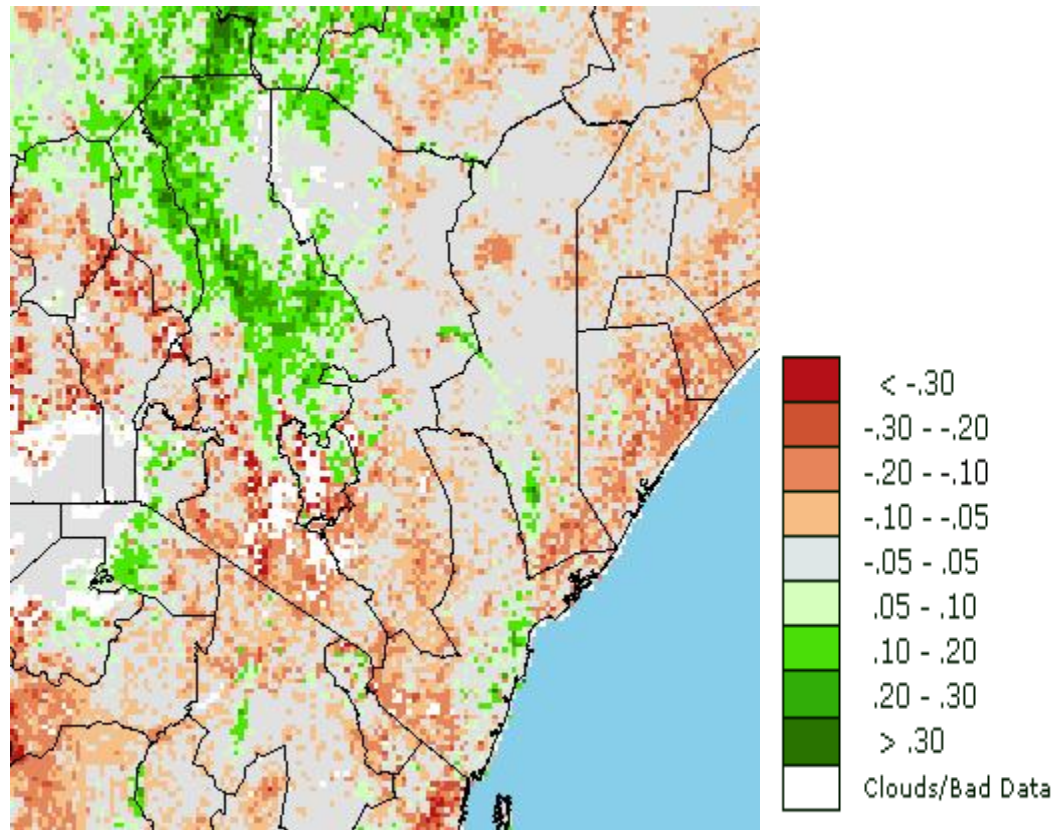


Fig. 4: Normalized Difference Vegetation Index (11th to 20th January 2008)

EXPECTED WEATHER AND CROP CONDITIONS DURING THE NEXT 10 DAYS (21st –31st January 2008).

During the next 10 days Western, Nyanza and Central Rift Valley regions are expected to experience light to moderate rainfall. Crops are expected to continue experiencing water stress. Areas around Kisii and Nandi Hills will experience moderate to heavy rainfall and crops are expected to continue corresponding to normal growth.

Central Highlands, Nairobi area and its environs, are expected to receive light rainfall in few places. Crops are expected to continue experiencing water stress.

In South Eastern lowlands, light or no rainfall at all is expected. Crops are expected to continue experiencing water stress.

Coastal region is expected to experience dry conditions. Crops are expected to continue experiencing water stress.

In the pastoral regions of North Eastern and North Western including Southern Rift Valley dry and hot conditions are expected to dominate resulting in poor pasture regeneration and scarce water sources for both domestic and animal use.

In summary crops are expected to experience water stress due to insufficient rainfall in most parts of the country. In the pastoral regions and game parks dry and hot conditions are expected to prevail resulting in inadequate pastures and water for both domestic and animal use.

This product should be used in conjunction with the daily 24-hour forecast issued by the Department.

This product should be used in conjunction with the daily 24-hour forecast issued by the Department.

This product should be used in conjunction with KMD weather forecasts

Contact information

Kenya Meteorological Department

Agrometeorological Division

Dagoretti Corner, Ngong Road,

P.O. Box 30259, 00100 GPO, Nairobi

Tel: +254 (0)20 3867880-7/3876957/3873682

Fax: +254 (0)20 3876955

E-mail: director@meteo.go.ke

Website: www.meteo.go.ke

©2008 The Kenya Meteorological Department