



KENYA METEOROLOGICAL DEPARTMENT
DEKADAL AGROMETEOROLOGICAL BULLETIN

WEATHER AND CROP REVIEW FOR DEKAD 17, 2013
11-20 JUNE 2013

1. HIGHLIGHTS ON RAINFALL AND TEMPERATURE

Rainfall activities in the Country have significantly increased as compared to the previous dekad. Kabarak station in Rift valley region recorded 102.7 mm of rainfall which was the highest amount compared to 54.3 mm that was recorded in Kisumu station in the previous dekad. In Western region Kakamega station recorded 29.7mm, an increase compared to 12.6mm that was received in the previous dekad. Mombasa station in the Coastal region recorded the highest rainfall of 20.9mm. In Central region the highest rainfall of 19.1 mm was recorded at Nyeri station while in North Eastern region the highest rainfall of 0.01mm was reported at Garissa station. Embu station in Eastern region reported the highest rainfall of 19.6mm an increase compared to 2.6mm that was recorded at the same station in the last dekad. In Nairobi region Wilson airport recorded the highest rainfall of 38.7mm.

Maximum and Minimum Temperatures reduced considerably in most parts of the country compared with previous dekad. In the dekad, Lodwar station reported the highest maximum temperature of 33.8°C compared to 34.3°C reported in the same station. Nyahururu station in Central region still reported the lowest temperature of 9.8°C compared to 7.3°C reported in the same station in the previous Dekad.

For a more comprehensive summary of rainfall and other meteorological parameters, see Figures 3.1 to 3.4 as shown below.

2. CROP AND WEATHER REVIEW FOR DEKAD 17; 11-20 JUNE 2013

2.1 NYANZA AND WESTERN REGIONS

2.1.1 Kakamega

This station received rainfall amount of 29.7mm. The mean air temperature and pan evaporation reported were 20.9°C and 28.2 mm respectively. There was no report on sunshine hours.

Maize crop is still in flowering stage with normal yields being expected while beans harvesting is almost over.

2.1.2 Kisii

This station recorded rainfall amount of 80.0mm. The mean air temperature and total pan evaporation recorded were 24.9°C and 36mm respectively. There was no report on sunshine duration.

Maize crop are at flowering stage while beans are in maturity stage. Both crops are in fair state.

2.2 RIFT VALLEY REGION

2.2.1 Kitale

The station received rainfall amount of 17.4mm. The average air temperature and pan evaporation were 19.3°C and 26.6mm respectively. There was no report on sunshine parameter.

Both maize and beans crops are still in flowering stage. They are in good state with normal yield expected.

2.2.2 Eldoret-Kapsoya

The station received rainfall amount of 92.6mm. The average air temperature and pan evaporation reported were 16.8 °C and 36.8mm respectively. There was no report on sunshine parameter.

Maize is at emergence stage and in fair state while beans are in the flowering stage and in a poor state. Below normal yield is expected for beans as they had been adversely affected by excessive rainfall.

2.3 CENTRAL KENYA HIGHLANDS AND NAIROBI AREA REGION

2.3.1 Nyeri

The station received rainfall amount of 19.1mm. The average air temperature was 16.3°C. There was no report on pan evaporation and sunshine parameters.

Maize and beans were at emergence and flowering stages and in fair state. The maize crop is being affected by the maize stalker borer and beans by some other insects.

2.3.2 Kabete

The station received rainfall amount of 19.4mm. The average air temperature and pan evaporation recorded were 16.3°C and 16.4mm respectively. There was no report on sunshine hours.

Maize was at emergence stage and in a fair state. Beans were at flowering stage and in a poor state with normal yield being expected. Coffee was at 100% berry soft stage and in a moderate state but damaged by leaf rust and leaf minor at less than 10% each. Bananas were at 100% appearance of sucker stage and in a moderate state but had been damaged by thrips, cigar end rot and cigar Toka at less than 10% each.

2.3.3 Thika

The station received 9.1mm of rainfall. The mean air temperature recorded was 18.5°C. There was no report on sunshine hours and pan evaporation.

Maize was still at flowering stage while beans were at maturity stage but both crops were in poor state as they had been adversely affected by insufficient rainfall. Below normal yield is expected for all the three crops.

2.3.4. Nyahururu

The station received 5.9mm of rainfall. The mean air temperature and pan evaporation recorded were 15.15°C and 26.8mm respectively. There was no report on sunshine hours.

Maize was at emergence stage while beans were at flowering stage though potatoes are at maturity stage. Normal yield is expected for beans and potatoes.

2.3.5. Dagoretti

The station received rainfall amount of 23.7mm. The mean air temperature and evaporation pan recorded were 17.0°C and 35mm respectively. There was no report on sunshine hours.

2.4 EASTERN KENYA REGION

2.4.1 Meru

The station reported 1.3mm of rainfall. The average air temperature and pan evaporation were 16.6°C and 24.4mm respectively. There was no report on sunshine parameter.

Maize and beans were at flowering and maturity stage respectively but both in poor state as they have been adversely affected by insufficient rainfall. Below normal yield is expected for both crops.

2.4.2 Embu

The station recorded rainfall and pan evaporation amounts of 19.6mm and 14.2mm respectively. There was no report on sunshine and Temperature parameters.

Maize was at flowering stage while beans were at maturity stage and in fair state though both crops were suffering from moisture stress.

2.4.3 Katumani (Machakos)

The station recorded no rainfall. The average air temperature was 17.4°C. There was no report on pan evaporation and sunshine parameters.

Maize was at flowering stage but in poor condition due to moisture stress.

2.5 COASTAL REGION

2.5.1. Msabaha

The station received rainfall amount of 3.3mm. The average air temperature and pan evaporation recorded was 26.3°C and 37.3mm respectively. There was no report on sunshine hours.

Maize was at flowering stage and in fair condition while Mangoes were at 100% fruit setting stage and in good state.

2.5.2 Mtwapa

The station received rainfall amount of 14.3mm. The average air temperature was 28.7°C. There was no report on sunshine hours.

Maize was at flowering stage and in good condition even though they are being affected by excessive rainfall, stalk borer and destroyed by wild animals.

Mangoes were at harvesting stage and in a poor state as they have been affected by a storm and animals.

3.0 ANALYSIS OF RAINFALL, TEMPERATURE AND VEGETATION CONDITIONS

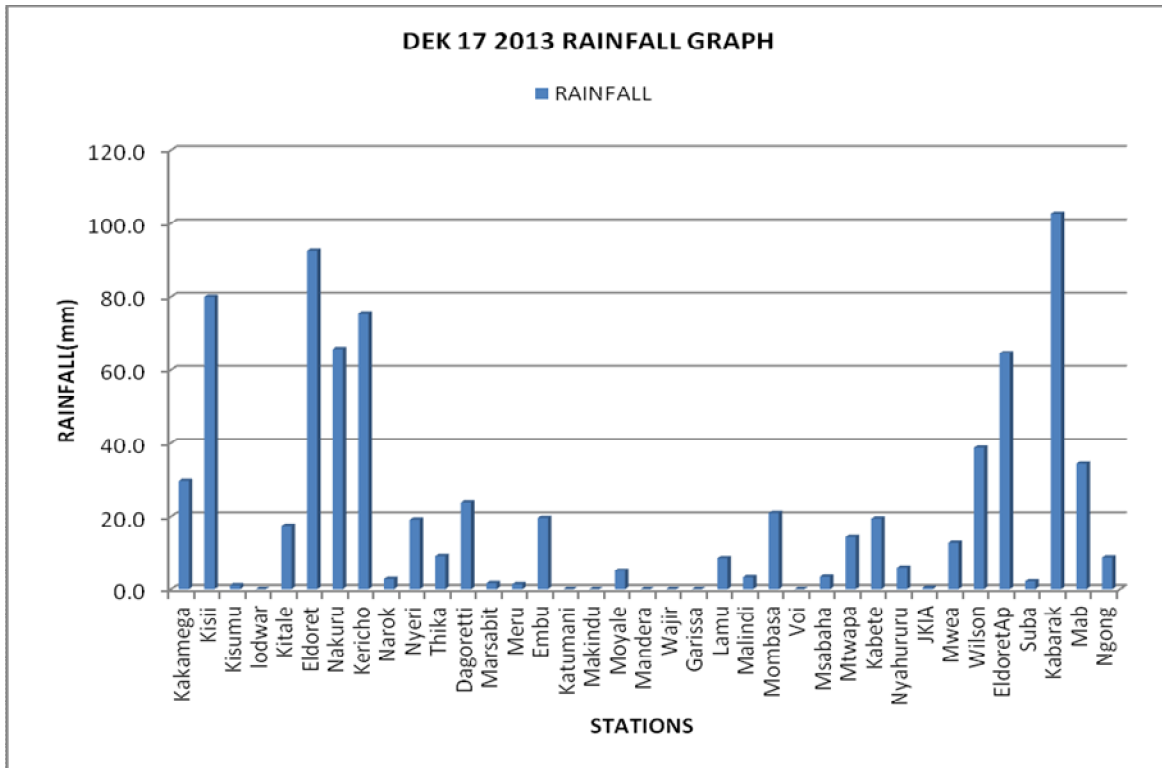


Figure 3.1: Dekadal Rainfall totals for 11th to 20 June 2013

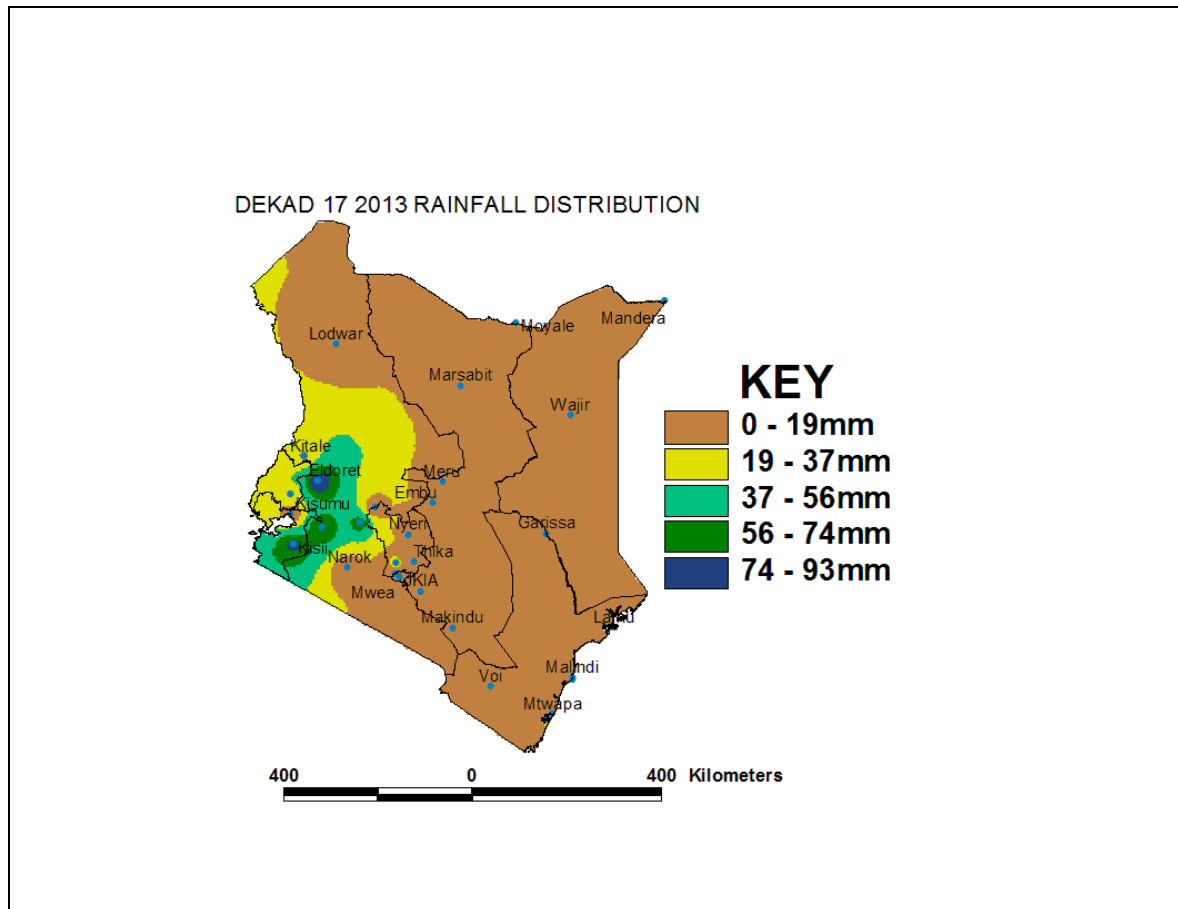


Figure 3.2: Dekadal Rainfall distribution for Dekad 17, 2013

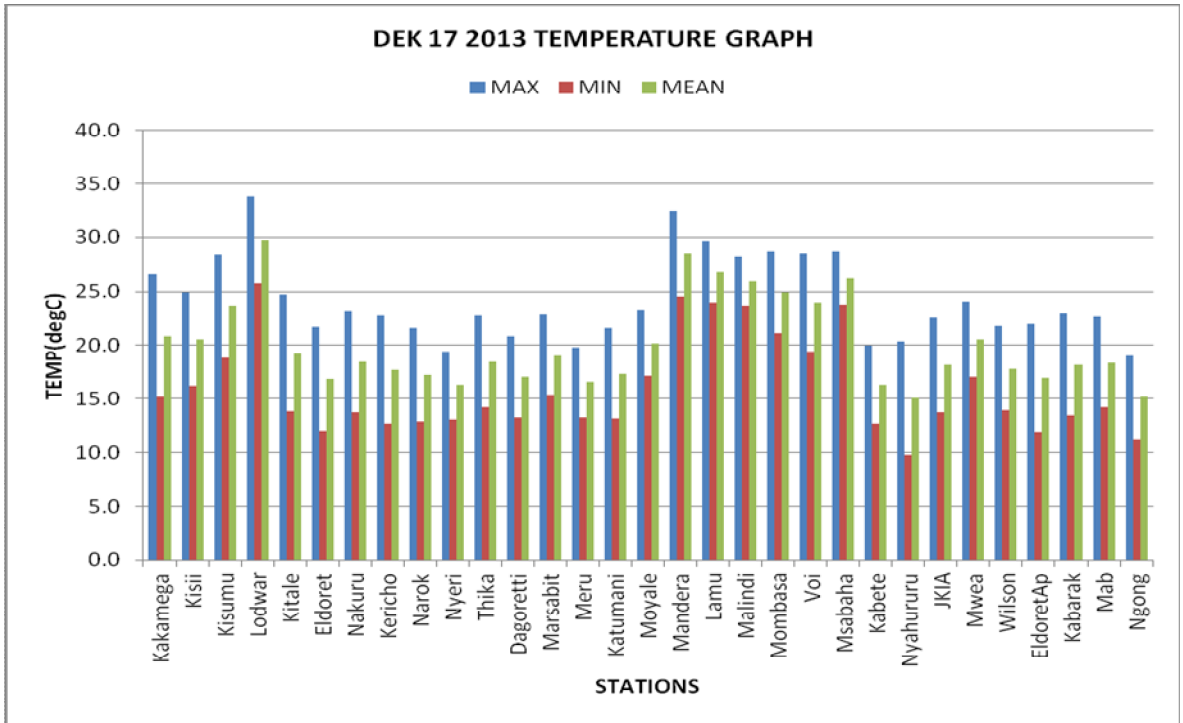


Figure 3.3: Maximum, Minimum and Average temperature in °C for dekad 17, 2013

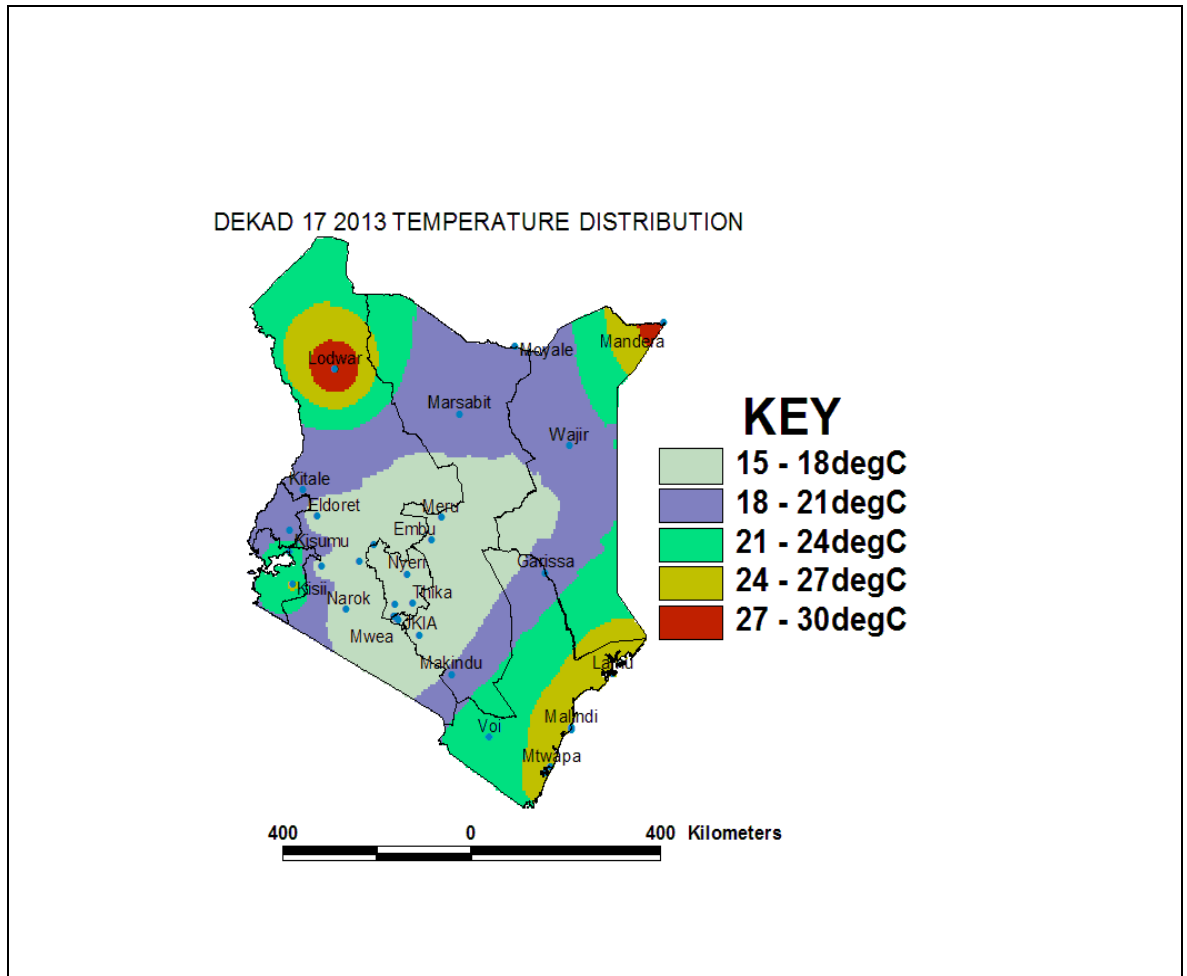


Figure 3.4: Mean temperature distribution for dekad 17, 2013

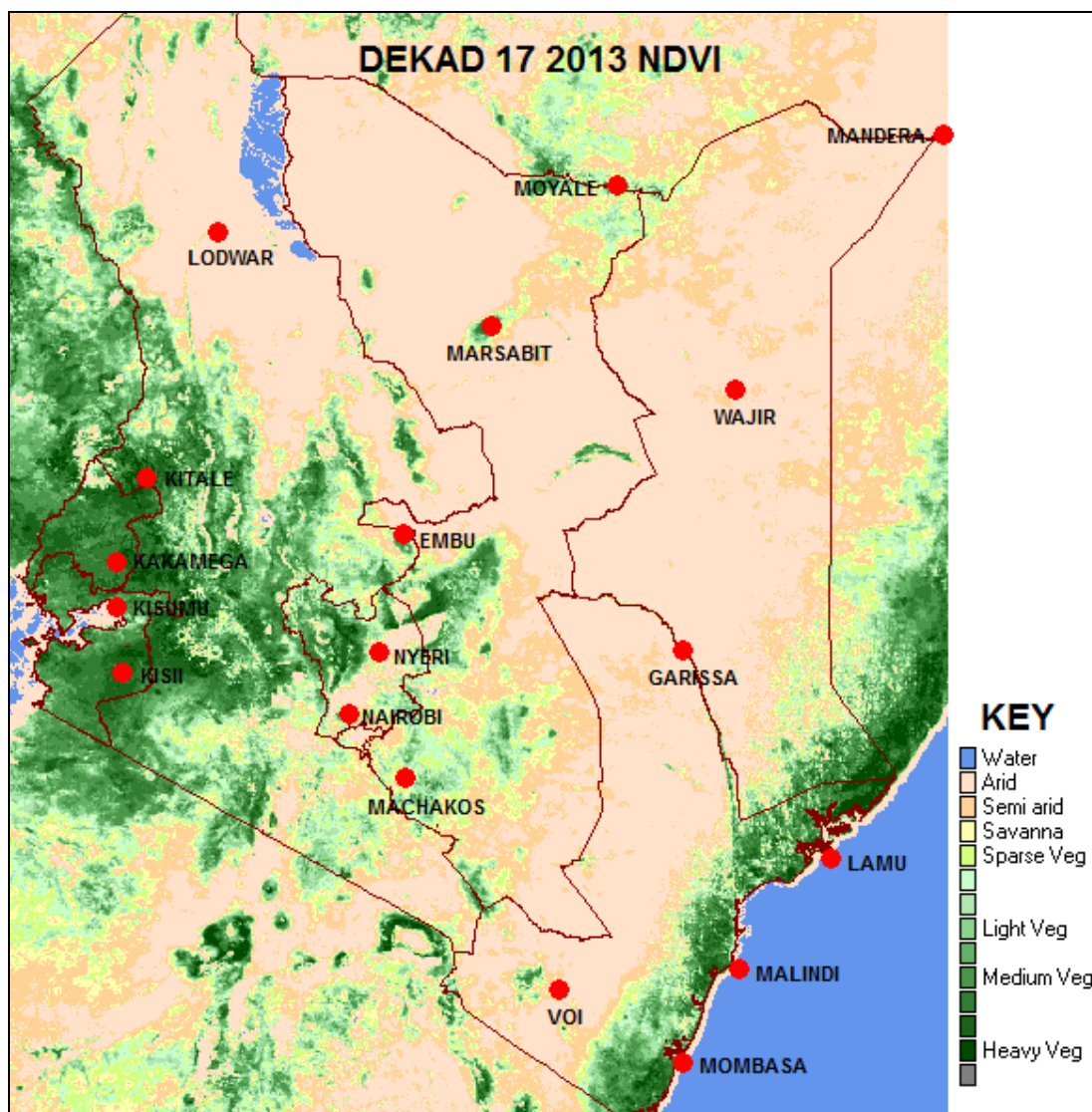


Figure 3.5: Normalized Difference Vegetation Index (NDVI)

4. EXPECTED WEATHER AND CROP CONDITIONS DURING THE NEXT 10 DAYS 21-30 June 2013

- ✚ Counties within the Lake Victoria Basin, Highlands west of the Rift Valley, Nyamira, Kericho, Bomet, Uasin-Gishu, Nakuru, Narok, Trans Nzoia, Elgeyo Marakwet, Nandi, Laikipia, Kajiado, Vihiga and Busia), are expected to experience sunny intervals in the morning while afternoons are expected to experience showers and thunderstorms over few places for the entire forecast period.

The showers continue to be of great benefit to the crops which are now in their flowering stage.

- ✚ **Over the Northwestern counties (Turkana, West Pokot and Samburu),** are expected to experience sunny intervals in the morning and afternoon for the entire forecast period.

The dry conditions will impact negatively on the pastures and vegetation cover in these regions.

- ✚ **The Central highlands including Nairobi area (counties of Meru, Murang'a, Kiambu, Nyeri, Nairobi, Embu, Nyandarua, Tharaka and Kirinyaga),** are expected to experience cloudy early mornings which will break into sunny intervals over the entire forecast period. Showers over a few places are to be experienced in the afternoon.

The showers continue to benefit the crops growing in these regions.

- ✚ **Northeastern counties (counties of Marsabit, Mandera, Wajir, Garissa and Isiolo),** are expected to continue experiencing sunny intervals in the morning and afternoon over the entire forecast period.

The dry conditions are expected to be unfavorable to the pastures and vegetation in these regions.

- ✚ **Southeastern lowlands (counties of Taita Taveta, Makueni, Machakos and Kitui),** are expected to experience sunny intervals in the morning and the afternoon for the entire forecast period.

The dry conditions are expected to impact negatively on the growing crops and pastures in these regions.

- ✚ **In the Coastal strip (counties of Mombasa, Malindi, Kilifi, Lamu, Kwale, etc),** are expected to experience showers over few places in the mornings and sunny intervals in the afternoons for the entire forecast period.

- ✚ *The morning showers continue to benefit the growing crops in these regions.*

For feedback or further guidance, Contact:

Director,
Kenya Meteorological Department,
Agro meteorological Advisory Services Division,
Dagoretti Corner, Ngong Road, P.O. Box 30259, 00100 GPO, Nairobi
Tel: +254 (0)20 3867880-7/3876957/3873682; Fax: +254 (0)20 3876955
E-mail: agromet@meteo.go.ke;
Website: www.meteo.go.ke

©2013 The Kenya Meteorological Department