



Summary of Agromet Advisory Services for different States of the country
Issued by
Agricultural Meteorology Division, India Meteorological
Department, Pune, India

Thursday, 21st December, 2006

(For the period 21st December to 25th December, 2006)

The extended version of the bulletin is also available at <http://imdagrmet.org>

North West India (Haryana, Punjab, Rajasthan, Uttar Pradesh, Delhi, Himachal Pradesh, Jammu & Kashmir and Uttarakhand)

Punjab

Weather remained mainly dry in the State during the period.

Isolated rain / thundershowers are also likely over the State during next 24 hours and mainly dry weather thereafter. Fall in night temperatures by 2-3^oC over the State from 22nd December onwards.

Advisories

- There was no rainfall in the State during last week and isolated rain / thundershowers are also likely over the State during next 24 hours and mainly dry weather thereafter. Under the circumstances, apply irrigation to **sugarcane, gram, lentil and wheat**.
- Continue sowing of late **wheat** variety PBW 373.
- Undertake necessary weeding and intercultural operation to control weeds in **rabi oilseeds, gram and lentil**.
- Make necessary arrangements to protect the **rabi oilseed, gram, lentil, wheat and vegetable** crops from cold / frost injury. Apply light irrigation and arrange for smoke around the field to prevent frost injury.
- Apply top dressed nitrogen to early sown **wheat** crop.

Haryana

Weather remained mainly dry in the State during the period.

Isolated rain / thundershowers are also likely over the North Haryana during next 24 hours and mainly dry weather thereafter. Mainly dry weather likely in South Haryana. Fall in night temperatures by 2-3^oC over the State from 22nd December onwards.

Advisories

- There was no significant rainfall during last week and isolated rain / thundershowers are also likely over the **North Haryana** during next 24 hours and mainly dry weather thereafter. Under the circumstances, apply irrigation to **sugarcane, gram, lentil and wheat**.
- There was no significant rainfall during last week and mainly dry weather is likely over **South Haryana** for the next three days. Under the circumstances, apply irrigation to **sugarcane, gram, lentil and wheat**.
- Complete sowing of **gram, and lentil**. Continue sowing of late varieties of **wheat** i.e. Sonalika, WH- 291, 396, PBW 373,138 and RAJ-3765 and **sunflower**.
- Incidence of **shoot borer, top borer, gurdaspur borer, pyrilla, termite and red rot** is reported in **sugarcane**. To control **pyrilla** spray 600-800ml malathion in 800 litre of water per acre.
- Make necessary arrangements to protect the **rabi oilseed, gram, lentil, wheat and vegetable** crops from cold/frost injury. Apply light irrigation and arrange for smoke around the field to prevent frost injury.

Rajasthan

Weather remained dry in the State. Night average temperature was generally normal in all the divisions of the State.

Mainly dry weather is likely over the State.

Warning: Cold wave conditions may occur at few places in North Rajasthan during next 48 hours.

Advisories

- Apply irrigation and arrange for smoke near the field in north Rajasthan to safeguard the crops from cold injury.
- Wipe out water droplets on the leaves by pulling rope from the two sides of field. This will prevent formation of ice crystals during night time.
- This is proper time for sowing late varieties of **barley** and **wheat**. Continue land preparation and sowing. Undertake seed treatment before sowing.
- Apply pre-sowing irrigation before sowing of **wheat**. Select varieties from GW-173, 190, PBW-343, HD-2329, Raj-1482, 3077, 3765 etc. for sowing.
- Undertake intercultural operations in early sown **mustard**, **cumin**, **maize** and **gram** to keep the field weed free. Top dress urea in mustard crop before light irrigation.

Uttar Pradesh

Weather was mainly dry in all divisions of U.P. from 18th to 20th December.

Weather will be mainly dry over the State. Fall in night temperatures by 2-3 °C likely over the West U.P from 22nd December onwards.

Advisories

- There was no significant rainfall during last week and mainly dry weather is likely over the State for the next three days. Under the circumstance, apply irrigation to bring the soil moisture to its field capacity in **rabi oilseed**, **pulses** and **winter vegetable** crops.
- Continue weeding and hoeing along with top dressing of nitrogen in winter **vegetables**, and **rabi oilseeds** and **pulses**.
- Sowing of **rabi wheat**, late varieties of **gram** and **barley** crops may be completed.
- Harvesting of **sugarcane** may be continued.
- Make necessary arrangements to protect the **wheat** and **barley** crops from cold injury. Apply light irrigation and arrange for smoke around the field.

Himachal Pradesh

The precipitation occurred at isolated places.

Isolated rain / snowfall is likely to occur over the State during next 24 hours and weather will be mainly dry thereafter.

Advisories

- As there was no significant rain during last week in the State and isolated rain / snowfall is likely to occur over the State during next 24 hours and weather will be mainly dry thereafter, apply irrigation to **vegetable** crops, **gram**, **rapeseed** and **mustard** and early sown **wheat** and **barley** wherever crops are at vegetative stage.
- Complete land preparation and nursery sowing and transplanting of **cauliflower** and **cabbage** in low and mid hills, sowing of **radish**, **turnip** and **carrot** and also sowing of **wheat** and **barley** in rainfed areas.
- Select varieties from HPW-42 and HS-295 for late sowing of **wheat**, and Vimal (HBL-113) Dolma; Sonu

(HBL-87); Gopi (HBL-316); Harit HBL-276) for **barley**.

- As there is chance of occurrence of frost, farmers are advised to arrange for smoking around the field to save the crops from frost.

Uttaranchal

Weather remained mainly dry during the period. Sky remained mainly clear to mainly cloudy.

Rain / snowfall is likely to occur at a few places over the State during next 24 hours and weather will be mainly dry thereafter. Fall in night temperatures by 2-3⁰C over the plains from 22nd December onwards.

Advisories

- There was no significant rainfall during last week and rain / snowfall is likely to occur at a few places during next 24 hours and weather will be mainly dry thereafter over the State. Under the circumstances, apply required irrigation to **mango, potato** and **wheat** crops.
- Carry out inter cultural operation, application of fertilizer and plant protection measures to **mango, wheat** and **potato** crops on a non rainy day.
- Apply light irrigation and arrange for smoke around the field to prevent frost injury in **potato** and **wheat**.
- Continue harvesting of matured crops of **toria, sugarcane** and **pea** on bright sunny days.

Jammu & Kashmir

Weather remained mainly dry over J & K State.

Rain / snowfall activity is likely at a few places over Jammu & Kashmir during next 24 hours and mainly dry weather thereafter.

Advisories

- Apply irrigation and arrange for smoke near the field in Jammu division to safeguard the crops from cold/frost injury.
- Wipe out water droplets on the leaves by pulling rope from the two sides of field. This will prevent formation of ice crystals during night time.
- Continue sowing of late varieties of **wheat**. Before sowing, undertake ploughing followed by planking to conserve moisture.
- Rouge out virus effected crops of **brinjal, tomato, cauliflower** and **cabbage** in Jammu division.

Delhi

Weather remained dry.

Mainly dry weather is likely over the Sate. Fall in night temperatures by 2-3⁰C over the State from 22nd onwards.

Advisories

- As there was no significant rainfall during last few weeks and mainly dry weather is likely over the State for next three days, apply irrigation to **early sown vegetable crops** and **wheat** and also to **barley, gram, mustard** and **toria** to bring the soil moisture to its field capacity.
- Prepare land and perform sowing of Pusa Himani variety of **raddish** and Nanteez variety of **carrot**. Treat the seeds with Captan or Thairam or Dithane M- 45 @ 2 g / kg seeds.
- Prepare land and continue late sowing of **wheat**.
- Select varieties from HD-2285, Raj-3077 or 3765, UP 2338 and PBW-226 or 373 etc. for late sown **wheat**.

Southern Region (AP, Tamilnadu, Karnataka and Kerala)

Kerala

Mainly dry / dry weather prevailed over the State during the period.

Rain / thundershowers are likely to occur at a few places over the State.

Advisories

- There was no significant rainfall in the State during last few weeks and rain / thundershowers are likely to occur at few places for the next three days. Under the circumstance, apply irrigation to **plantation crops** and **mundakan rice** depending upon the rainfall situation.
- Attack of **mahali** disease is reported in **arecanut**. Spray 1% Bordeaux mixture on fruit bunches and crown on a non rainy day to control **mahali** disease.
- Attack of **pseudostem weevil** and **bunchy top** is reported in **banana**. Eradicate **bunchy top** affected plants to prevent further spread of the disease. Spray Quinalphos @ 0.05% or Chloropyriphos @ 0.03% or Carbaryl @ 0.2% on a non rainy day to control **pseudo stem weevil**. Spraying / drenching may be done on all leaf axils, rhizome, surrounding soil and all around the entire pseudo stem. Repeat the treatment after 3 weeks if infestation persists.
- Attack of **Leaf eating caterpillar**, **rhinoceros beetle**, **mite**, **red palm weevil** insects is reported in **coconut**. Fill the leaf axils with 25 gm Sevidol 8G and fine sand 200 gm on a non rainy day for controlling **red palm weevil** and **rhinoceros beetle**. Spray Dichlorovos @ 1 ml per lit of water or use Mercaptothion followed by release of pupal and larval parasites available from bio-control lab, 21 days after spraying on a non rainy day to control **leaf eating caterpillar**. Spray garlic-neem emulsion on a non rainy day to control **mite**.
- Attack of **rice bug** is reported on **rice**. Spray Malathion @ 2 ml/litre on a non rainy day to control **bug**.

Tamilnadu

Mainly dry weather prevailed over the State on 20th December and dry weather prevailed on 18th and 19th December.

Rain / thundershowers are likely at a few places over the State.

Advisories

- There was no significant rainfall in the State and rain / thundershower is likely to occur at few places in Tamil Nadu. Under the circumstance, apply irrigation to the standing crops to bring the soil moisture to its field capacity.
- Weather conditions are favourable for the outbreak of pests and diseases, particularly for **BPH** and **blast**. Monitor the crop and undertake plant protection measures.
- Monitor **groundnut** for **red hairy caterpillar** and **leaf miner**. If the pest population crosses ETL, spray Monocrotophos @ 625 ml / ha to control **red hairy caterpillar**. Dust 4% Carbaryl or spray Methyl demeton @ 0.02% to control **leaf miner**.
- Continue land preparation and sowing of **cotton**, **pulses** and **sunflower**.

Karnataka

Dry weather prevailed over the State on all days.

Isolated rain / thundershowers are likely at South Interior Karnataka. Mainly dry weather is likely over the rest region.

Advisories

- There was no rainfall during last week and rain / thundershower is likely to occur only at South Interior Karnataka and dry weather is likely to prevail in rest of the region for the next three days. Under the conditions, apply irrigation to early sown **rabi** crops like **jowar**, **wheat** and **maize** to bring the soil moisture to its field capacity.
- Monitor **ratoon sugarcane** for **wooly aphids** and if the pest population crosses ETL, release *Dipha* sp, adopt wider spacing, inter-cropping with soyabean and pulses of short duration as plant protection measures against wooly aphids in **Mysore**, **Mandya** and **Hassan** districts.

Andhra Pradesh

Dry weather prevailed over the State.

Isolated rain / thundershower is likely over South Coastal Andhra Pradesh and Rayalaseema. Mainly dry weather is likely to prevail over Telangana.

Advisories

- There was no significant rainfall during last few weeks over the State and rain / thundershowers likely to occur at isolated places over South Coastal Andhra Pradesh and Rayalaseema for the next three days. Under the circumstances, apply irrigation to *rabi* crops like **gram**, **maize** and **groundnut** to bring the soil moisture to its field capacity.
- Incidences of *Spodoptera exigua* has been reported in **gram** in **Kurnool**, **Kadappa** and **Anantpur** districts. Spray Thiodecarb @ 1 gm or Acephate @1 gm or Chloropyriphos @ 3 ml per liter of water to control the pest.

Eastern Region (Assam, Bihar, Sikkim, West Bengal)

Assam

Weather was mainly dry during the period over the State.

Mainly dry weather is likely over the State during next 24 hours and isolated rain/thundershowers thereafter.

Advisories

- As there was no significant rain in all the districts during last week and mainly dry weather is likely over the State during next 24 hours and isolated rain / thundershowers thereafter, apply irrigation to **wheat**, **rapeseed** and **mustard**, **potato**, **pea**, **lentil** and early sown **vegetables**.
- Mild incidence of **Pod and apion borer** in **arhar**, **aphids**, **jassids**, **flea beetle** and **leaf spot** in **black gram** and **green gram**, **aphids** and **saw fly** in **mustard** and **late blight** in **tomato** is reported.
- Monitor **aphids** and **saw fly** in **mustard** and if crosses economic threshold level, spray Rogor or malathion @ 2ml per litre of water.
- Monitor late blight of **tomato** and if crosses economic threshold level, spray Indofil M-45, alternatively Indofil Z-78 @ 25 gm in 10 litres of water.
- Continue land preparation and sowing of **winter vegetables** and **transplanting of rice**.
- Maintain 2 – 3 cm water in the **rice** field after 2 -3 days of transplanting.

West Bengal

Weather was mainly dry over the State.

Weather will be mainly dry over the State.

Advisories

- As there was no significant rainfall in all the districts of the State during last week and mainly dry weather is likely over the State for next three days, apply irrigation to **sugarcane**, **rapeseed** and **mustard**, **gram** and **lentil**, **wheat** and **potato** crops.
- Apply first split dose of nitrogenous fertilizer (25 – 30 kg N / ha) at 20 – 25 days after sowing of **wheat**.
- Monitor blight disease in **wheat** and in the event of occurrence of this disease, apply Mancozeb @ 2.5 g per liter of water and spray 2 times at an interval of 7 days.
- Land should be prepared and nursery sowing of **boro rice** may be carried out.
- Select varieties from CR-126-42-1, Kshitish, IE-2233, PNR 381, IR-36, Lalat, Annada, Aditya, Tulsi etc. for short duration and Shasyasri, Prakash, Kunti, Ajaya, Pratap, Suraksha etc. for medium duration **boro rice**.

Bihar

Weather was mainly dry.

Mainly dry weather is likely over the State.

Advisories

- There was no significant rainfall during last week and mainly dry weather is likely over the State for next three days. Under the circumstances, apply required irrigation to bring the soil moisture to field capacity in **vegetables, maize, pulses, oilseeds and wheat**.
- Continue transplanting of winter **vegetables**.
- Continue field preparation and sowing of late sown **wheat**.
- Preparation of nursery bed for sowing of **boro rice** may be undertaken.

Jharkhand

Weather remained mainly dry.

Mainly dry weather is likely over the State.

Advisories

- There was no rainfall during last week and mainly dry weather is likely over the State for next three days. Under the circumstances, apply required irrigation to bring the soil moisture to field capacity in **vegetables, maize** and early sown **potato, pulses, oilseed and wheat** crops.
- Continue field preparation, sowing / transplanting of **onion, tomato, cabbage, cauliflower, brinjal, chilli, potato, garlic and pea**.
- Sowing of **wheat** may be continued.
- Monitor the crop for attack of **pod borer** in **Arhar** and to control the borer spray Endosulfan or Chlorpyrifos 20 E.C (2ml/ litre of water).

Sikkim

Sky remained partly cloudy during the period. No rain occurred during the period over East Sikkim.

Mainly dry weather is likely over the State.

Advisories

- There was no significant rainfall during last few weeks and dry weather is likely to prevail over the State for the next three days. Under the circumstances, apply irrigation to **vegetables** to bring the soil moisture to its field capacity.
- Undertake intercultural operations in **wheat, rabi vegetables** and **mustard** to keep the field weed free. Weeding must be done on monthly basis in mustard to remove *Satyanshi*.

Arunachal Pradesh

Isolated rain / thundershowers are likely over the State during next 24 hours and mainly dry weather thereafter.

Advisories

- There was no rainfall in the State during last week and mainly dry weather is likely during next 24 hours and isolated rain / thundershowers thereafter. Under these conditions, apply irrigation to the standing crops to bring the soil moisture to its field capacity.
- Sowing of **wheat** may be completed.

- First top dressing in early sown **potato** (33 Kg Urea/ha.) followed by earthing up and spray with 1.25 Kg. Dithane M-45 in 500 Lit. water may be continued.

Central Region (Gujarat, Chhattisgarh, Maharashtra, MP & Orissa)

Gujarat

Weather remained dry during the period.

Mainly dry weather is likely over the State.

Advisories

- As there was no significant rain in the State during last few weeks and weather will be mainly dry over the State for next three days, apply irrigation to **pre-monsoon irrigated cotton, Kharif cotton, castor, mustard and wheat** to bring the soil moisture to field capacity.
- If population of sucking pests like **Aphids, Jassids, Thrips & Heliothis** crosses economic threshold level in **cotton**, release chrysoperla eggs or first instar larvae @ 10000 / ha twice at the interval of 15 days.
- There is mild chance of attack of aphids, mustard saw fly and jassids in **mustard**. If aphid population exceeds economic threshold level, spray pesticides phosphamidon @ 4 ml or dimethoate @ 10 ml or monocrotophos @ 12.5 ml in 10 liter water as per requirement. Second spray 10 to 15 days after first spray if required or dust the methyl parathion 2% powder or quinalphos 1.5 % @ 25 kg / ha.
- Prepare land and continue late sowing of **wheat** crop. Select varieties from Lok-1, Gw-173 (150 kg seeds / ha) for late sowing of irrigated wheat. Apply basal fertilizer dose 60 kg Nitrogen, 60 kg phosphorus / ha at the time of sowing.

Chhattisgarh

Weather remained dry in the State during the period.

Mainly dry weather is likely over the State. Fall in night temperatures over the State from 22nd onwards.

Advisories

- As there was no significant rainfall in all the districts during last week and mainly dry weather is likely over the State for next three days, apply irrigation to **sugarcane, vegetables and gram, mustard, potato** and also to early sown **linseed, safflower and wheat** wherever crops are at vegetative stage.
- Continue preparation of land and sowing of **linseed, safflower and wheat** and planting of new crop of **sugarcane**.
- Select varieties from Kanchan, Bilasa, G.W.-273, Lok-1, Sujata, Ratna etc. for sowing of **wheat** and CO-62175, C.O.L.K.-8001 etc. for planting of **sugarcane**.

Maharashtra

Mainly dry weather prevailed all over the State.

Mainly dry weather will prevail all over the State. Fall in night temperatures over Vidarbha from 22nd onwards.

Advisories

- As there was no significant rain during last week in the State and mainly dry weather is likely over the State for next three days, apply irrigation to **kharif cotton, tur and cotton (irrigated)** crops and also to **rabi jowar, safflower, rabi maize, sunflower, potato, onion, gram, sugarcane (Pre-seasonal) and wheat**.
- Second split dose of 50 kg Nitrogen / ha may be applied to **rabi jowar** after 30 to 35 days from sowing.
- Second dose of 60 kg Nitrogen / ha may be applied to **wheat** at 21 – 25 days after sowing after weeding.

- Second split dose of 30 kg N / ha may be applied to *rabi* sunflower.
- Second dose of 50 kg Nitrogen / ha may be applied to potato before irrigation.
- Mild incidence of White Woolly Aphids in Aurangabad, Latur, Kohlapur and Pune and Pyrilla, White fly and Mealy bug in Nashik in sugarcane, Rice hispa & Midge fly in Nagpur division in *Kharif* rice, Aphids and Jassids in Vidarbha, Boll worm in Latur, Nashik and Amravati div. in irrigated cotton and Aphids and Jassids in Aurangabad and Vidarbha division in *kharif* cotton and leaf roller in Nagpur, pod borer in pune, Aurangabad, Amravati and Latur division in *tur*, Aphids and Leaf cater pillar in Nashik division and Sugary disease in Latur and Pune division in *rabi* jowar, Pod borer in Latur and Nashik division in gram and downy mildew in Grapes in Nasik, Pune, Solapur, Sangli and some other districts is reported.
- Monitor aphids and jassids population in cotton and if crosses economic threshold level, spray methyl dimeton 25EC @ 320 ml or dimethoate 30EC @ 500 ml / ha in 500 liter water.
- Monitor Boll worm in cotton and if exceeds economic threshold level, spray 36 % Monocrotophos WSC or 35 % Endosulphan WSC @ 850 ml / ha in 500 liter water.
- Monitor leaf roller population in *tur* and if crosses economic threshold level, spray 1000 ml endosulphon / ha in 500 liter water.
- Monitor pod borer population in *tur* and if crosses economic threshold level, spray 5% Neem extract or 20 to 25 ml Fenvalerate / ha in 100 liter water.
- Monitor infested plant by Sugary disease, aphids in *rabi* jowar & if exceeds economic threshold level, spray 5% Neem extract or Diamethoate 500 ml or Methyl Dimeton 400 ml or Monocrotophos 300 ml / ha in 500 liter water.
- Monitor Pod borer in gram and if exceeds economic threshold level, spray 5 % Neem extract or spray 35 EC Endosulphon @ 1000 ml or 25 EC Quinolphos @ 1000 ml / ha in 500 liters water.
- For the control of downy mildew on Grapes, spray 0.2 to 0.4 % Bordeaux mixture @ 250 gm in 100 liter water at 10 days interval. For powdery mildew alternate spraying of Tridimefon @ 100 ml or water soluble Sulpher @ 200 gm in 100 liter may be done at 10 days interval.

Madhya Pradesh

Dry weather prevailed over the State. Night temperatures were normal over the State.

Mainly dry weather is likely over the State. Fall in night temperatures over the State from 22nd December onwards.

Advisories

- There was no significant rainfall in all the districts during the last few weeks and mainly dry weather is likely to prevail for the next three days over the State. Under the circumstances, apply irrigation to early sown *rabi* crops like wheat, gram and mustard to bring the soil moisture to its field capacity.
- Undertake intercultural operations like weeding in early sown *rabi* crops like gram, mustard, wheat, masoor, linseed etc. to keep the field weed free.
- Monitor gram for leaf eating caterpillar. If the pest population crosses ETL, spray Monocrotophos @ 750 ml/ha.

Orissa

Weather was dry over the State during the above period.

Mainly dry weather is likely over the State.

Advisories

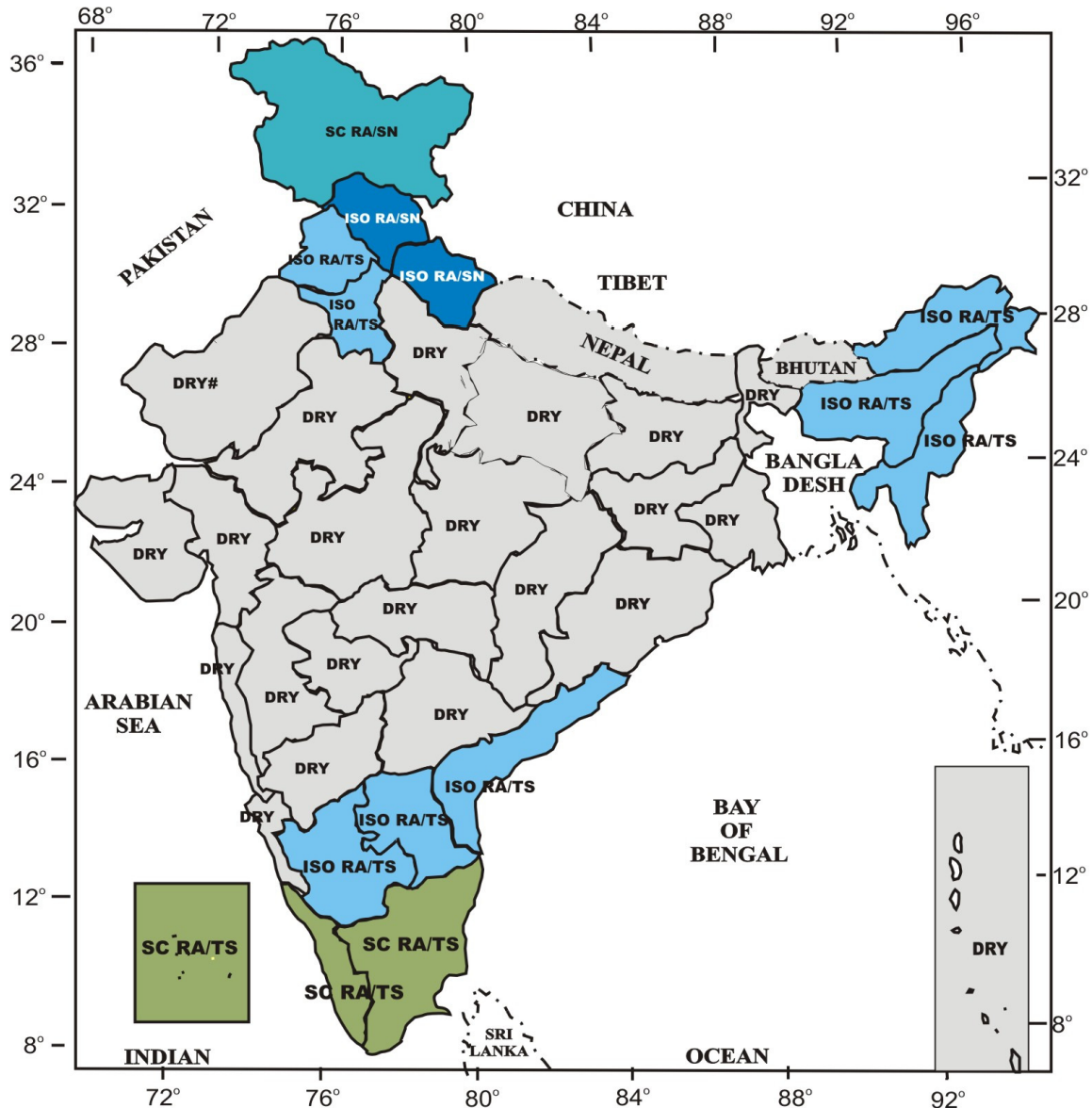
- There was no rainfall in all the districts during last few weeks and mainly dry weather is likely over the State for next 3 days. Under the circumstances, apply required irrigation to mustard, vegetables, groundnut and

sugarcane to bring the soil moisture to field capacity.

- Also continue inter cultural operation, application of fertilizer and plant protection measures in early sown *rabi* crops.
- Weather conditions are favourable for the incidences of *saw fly* in *mustard*. Monitor the crop and spray Endosulfan @ 2 ml. / litre of water to control the pest if it crosses ETL.
- Monitor *brinjal* for *Epilachna* beetle and if it crosses ETL, spray Carboryl @ 4 g / litre of water.
- Continue harvesting of matured *vegetables*, *sugarcane* and *pulse* crops.

Forecast Map

Valid upto 24th December



ISO - Isolated, TS - Thunder shower/storm, SN - Snow, RA - Rain, DRY - No rain, SC - Scattered, MOD-Moderate, SQ - Squall, HA- Hail. DS - Dust Storm, FW - Fairly Widespread
* - With heavy Rain warning, # fog condition

Salient weather features for the week ending 20/12/06

METEOROLOGICAL ANALYSIS

- A western disturbance affected Western Himalayan region on 14th December and moved away eastwards thereafter.
- A cyclonic circulation at lower tropospheric levels lay over Bangladesh and neighbourhood during 17-18th December and over Nagaland, Manipur, Mizoram and Tripura and neighbourhood on 19th December.
- A weak easterly wave affected Nicobar Islands, Tamil Nadu & Pondicherry and Lakshadweep during the week.

RAINFALL

- Scattered rain / thundershower occurred over Nicobar Islands during 14-15th December and 17th December and over Lakshadweep Islands on 14th December. Isolated rain / thundershower also occurred over Tamil Nadu & Pondicherry on 14th December.
- Isolated rain / thundershower occurred over northeastern States during 18th and 19th December.
- Mainly dry weather prevailed over the remaining parts of the country during the week.

MINIMUM TEMPERATURES

- The minimum temperatures were above normal by 2-3 °C over Rajasthan, on 14th December. This above normal night temperature conditions extended to Gujarat and adjoining Madhya Pradesh during 15-16th December. They were above normal by 2-3°C over above regions and adjoining plains of northwest India on 17th December. Subsequently, they were above normal by 2-3°C only over Gujarat and Rajasthan on 18th December and became normal afterwards over most parts of west & northwest India.
- They were below normal by 1-2 °C over east India on 14th and 15th December and over many parts of east India excluding West Bengal on 16th December.
- The minimum temperatures were above normal by 2-3 °C over north peninsula on 14th December. They were below normal by 1-2 °C over some parts of Peninsula on 15th December and 16th December and by 2-3°C over many parts of peninsula during 17-20th December.
- The night temperatures were above normal by 2-4°C over many parts of northeastern States and West Bengal & Sikkim during 17-20th December.

RAINFALL DURING THE WEEK ENDING ON 20TH DECEMBER, 2006

Rainfall was excess/normal in 2 and deficient/scanty in 5 and no rain in 29 out of 36 meteorological sub-divisions (Actual: 0.1 mm, Normal: 3.7 mm and Departure: -96%).

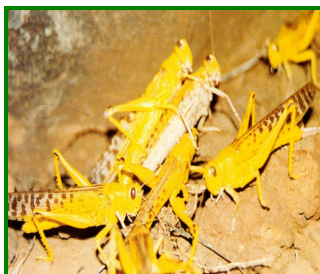
CUMULATIVE SEASONAL RAINFALL (1ST OCTOBER TO 20TH DECEMBER, 2006)

Rainfall was excess/normal in 11 and deficient/scanty in 25 out of 36 meteorological sub-divisions. (Actual: 98.3 mm, Normal: 119.1 mm and Departure: -17%).

OUTLOOK FOR THE WEEK ENDING ON 27TH DECEMBER, 2006.

- A fresh western disturbance is likely to affect Western Himalayan region during second half of the week.
- Rise in night temperature by 2-3°C over plains of northwest India and Gangetic plains during middle of the week and fall towards the end of the week.
- Subdued rainfall activity over south peninsula during second half of the week.

Desert Locust Forecasting



Rainfall (mm)							
Station Name	14.12.06	15.12.06	16.12.06	17.12..06	18.12.06	19.12.06	20.12.06
Amritsar	NIL						
Barmer							
Sriganganagar							
Jaisalmer							
Kota							
Deesa							
Churu							

Temperature (degree celcius)							
Station Name	14.12.06	15.12.06	16.12.06	17.12..06	18.12.06	19.12.06	20.12.06
Amritsar	11.5	-	13.0	12.5	-	12.5	-
Barmer	16.0	17.0	19.0	19.0	18.5	18.0	18.5
Sriganganagar	14.5	15.5	16.5	16.5	16.5	15.5	16.5
Jaisalmer	17.0	17.0	17.5	-	18.0	20.0	21.0
Kota	17.5	18.5	19.0	20.5	19.5	19.0	18.5
Deesa	20.0	21.5	22.0	22.0	22.0	21.5	22.0
Churu	-	-	-	-	-	-	-

Wind														
Station Name	14.12.06		15.12.06		16.12.06		17.12..06		18.12.06		19.12.06		20.12.06	
	Speed	Dir.	Speed	Dir.	Speed	Dir.	Speed	Dir.	Speed	Dir.	Speed	Dir.	Speed	Dir.
Amritsar	05	N	05	W	-	-	-	-	-	-	-	-	-	-
Barmer	09	NNW	-	-	-	-	-	-	08	W	07	W	09	SW
Sriganga nagar	08	NW	17	WNW	-	-	-	-	12	N	05	WNW	03	NE
Jaisalmer	09	NE	07	WSW	-	-	-	-	09	W	12	WSW	11	SW
Kota	05	NE	07	NW	-	-	-	-	11	WNW	03	W	04	NW
Deesa	06	NE	12	W	-	-	-	-	05	NW	07	SSW	06	WSW
Churu	13	NNE	15	WNW	-	-	-	-	13	NW	09	NNW	04	S

There is no chance of locust infestation in Rajasthan and the adjoining areas during this week.

CROP – STATE – STAGE

Delhi

Toria	Vegetables (Brinjal, Chilly, Cauliflower and cabbage, raddish, carrot, and turnip)	Early sown vegetable crops	Wheat	Gram
Flowering/Pod formation	Sowing/ Transplanting	Vegetative/ flowering/ fruiting/ harvesting	Late Sowing	Vegetative
Barley	Mustard		Early sown Wheat	
Vegetative	Vegetative		Germination / crown root initiation	

Haryana

Horticultural crop	Sugarcane	Gram /Lentil	Rabi oilseeds	Wheat
Early vegetative	Vegetative	Seedling / early vegetative	Early vegetative	Sowing / early vegetative

Himachal Pradesh

Wheat	Gram	Summer vegetables (Cauliflower, Cabbage in low and mid hills)	Vegetables (Tomato, brinjal, ladies finger)	Barley
Land preparation/Late sowing	Vegetative	Nursery sowing /Transplanting	Vegetative/flowering / fruiting / harvesting	Land preparation/ Late sowing
Early sown Wheat	Rape seeds and Mustard	Early sown Barley	Radish, Turnip, Carrot	
Germination/Early vegetative/Crown root initiation/tillering	Vegetative	Germination/ Early vegetative/vegetative	Sowing	

Jammu & Kashmir

Vegetable crops	Toria	Mustard	Gram/ Field Pea	Wheat
Early vegetative/vegetative	Vegetative	Flowering/Siliqua formation	Vegetative	Sowing
Brown sarson	Early sown Wheat	Lentil	Pea	
Vegetative	Early vegetative/vegetative	Vegetative	Vegetative	

Punjab

Sugarcane	Rabi oilseeds	Gram/Lentil	Horticultural crop	Wheat
Vegetative	Early vegetative	Vegetative	Early vegetative	Sowing / early vegetative

Rajasthan

	Mustard	Wheat	Gram	Barley
	Early vegetative/vegetative	Late sowing	Early vegetative/vegetative	Late sowing
Early sown Barley		Cumin	Early sown Wheat	
Early vegetative/vegetative		Land preparation/sowing	Early vegetative/vegetative	

Uttar Pradesh

Wheat/Barley	Rabi pulses	Sugarcane	Early sown Wheat/Barley	Winter Vegetables
Sowing	Vegetative	Harvesting	Seedling	Vegetative
Mango	Rabi Oilseeds(Rai and Mustard)	Kharif Vegetables	Toria	
Active growth / matured tree	Vegetative / flowering	Harvesting	Flowering / Seed formation	

Uttaranchal

Pea	Mango/Litchi	Wheat	Sugarcane	Toria
Pod maturity/Harvesting	Active growth	Crown root initiation/tillering	Maturity/harvesting	Pod formation/Maturity
Potato				
Tuber growth				

Assam

Early sown Vegetables	Sugarcane	Wheat	Vegetables	Balck gram and Green gram
Vegetative	Cane maturity / harvesting	Crown root initiation/tillering	Land preparation / sowing	Pod maturity

	Arhar	Rape seed and Mustard	Boro Rice	Pea, Lentil and Potato
	Maturity	Vegetative/flowering	Transplanting	Early vegetative/vegetative

Arunachal Pradesh

Mustard	Ginger	Potato	Wheat	Winter vegetables
Early vegetative	Vegetative	Early vegetative	Crown root initiation	Vegetative

Bihar

Fruits and Vegetables	Winter vegetables	Wheat	Early sown Wheat	Rabi Maize
Early Vegetative	Sowing / transplanting	Sowing	Germination to early vegetative	Vegetative / Flowering
Early sown fruits and Vegetables	Boro Rice	Potato	Rabi Oil seeds (Toria, Sarson, Linseed)	Rabi Pulses (Lentil, Gram, Pea)
Vegetative	Field preparation / nursery sowing	Early vegetative	Vegetative	Vegetative / flowering

Jharkhand

Rice	Rabi Maize	Wheat/Early sown Wheat	Potato
Harvesting	Early vegetative / Vegetative	Field preparation, sowing / Seedling, early vegetative	Early vegetative
Rabi vegetables (Tomato, Cabbage, Cauliflower, Brinjal, Chilli)	Early planted vegetables	Rabi pulses and oilseeds (Gram, masoor, lentil, linseed, oat, mustard and kusum)	Rabi pulses and oilseeds (Arhar)
(Sowing / transplanting - Onion, Pea)	Vegetative	Early vegetative	Flowering / pod formation

Sikkim

Orange	Mustard	Rabi vegetables	Wheat
---	Vegetative	Vegetative	Early vegetative/vegetative

West Bengal

Boro rice	Sugarcane	Wheat	Rape seed and Mustard
Field preparation / nursery sowing	Cane development	Early vegetative/crown root initiation/tillering	Vegetative
Gram/ Lentil		Potato	
Vegetative		Early vegetative/vegetative	

Chattisgarh

Gram	Vegetables (Tomato, chilli, brinjal)	Sugarcane	Wheat	Linseed, Safflower,
Early vegetative/branching	Vegetative	Cane development	Land preparation and Sowing	Field preparation/sowing
Mustard	Early Sown Linseed, Safflower,	Potato	Early sown Wheat	New crops Sugarcane
Early vegetative/branching	Early vegetative/vegetative	Early vegetative/vegetative	Germination/early vegetative/Crown root initiation/tillering	Planting

Gujarat

Mustard	Wheat	Pre-monsoon irrigated Cotton	Castor	Sugarcane
Vegetative / flowering	Land preparation / sowing	Boll formation / picking	Flowering / Pod formation	Maturity / Harvesting
Kharif Cotton	Early Sown Wheat	Summer Rice		
Square / boll formation	Germination / early vegetative / crown root initiation	Preparation of rice nursery		

Maharashtra

Rabi Jowar (Madhya Maharashtra, Marathwada & Vidarbha)	Tur (Madhya Maharashtra, Marathwada & Vidarbha)	Irrigated Cotton	Sugarcane (Seasonal) (Madhya Maharashtra, Marthwada and Vidarbha)	Rabi Sunflower (Madhya Maharashtra, Marathwada & Vidarbha)
Vegetative / Flag leaf initiation / flowering	Pod formation / pod maturity / harvesting	Boll formation / boll maturity / picking	cane maturity / harvesting	Vegetative / Floral bud formation

Potato (Madhya Maharashtra, Marathwada & Vidarbha)	Kharif cotton (Madhya Maharashtra, Marathwada & Vidarbha)	Potato (Madhya Maharashtra, Marathwada & Vidarbha)	Kharif rice (Konkan)	Kharif rice (Vidarbha)
Early vegetative / early tuberization	Boll formation / boll maturity / picking	Early vegetative/early tuberization	(late varieties) Harvesting	Grain maturity / harvesting
Gram (Madhya Maharashtra, Marathwada & Vidarbha)	Wheat (Madhya Maharashtra, Marathwada & Vidarbha)	Onion (Madhya Maharashtra, Marathwada & Vidarbha)	<i>Early sown Gram</i> (Madhya Maharashtra, Marathwada & Vidarbha)	Early sown Wheat (Madhya Maharashtra, Marathwada & Vidarbha)
Branching / Flowering / pod formation (in early sown crops)	Germination / seedling / crown root initiation / tillering	Early vegetative / vegetative (Early sown crops-bulb formation)	Pod formation	Germination/seedling/ crown root initiation/tillering
Safflower (Madhya Maharashtra, Marathwada & Vidarbha)	Maize (Madhya Maharashtra, Marathwada & Vidarbha)	Sugarcane Preseasonal (Madhya Maharashtra, Marathwada & Vidarbha)	Early sown Sugarcane Preseasonal (Madhya Maharashtra, Marathwada & Vidarbha)	
Vegetative / flowering	Knee high / Tasseling / Silking	Sprouting / early vegetative	Sprouting/early vegetative	

Madhya Pradesh

Wheat	Mustard	Gram	Masoor	Linseed
Vegetative	Vegetative	Vegetative	Vegetative	Vegetative
Irrigated Wheat				
Early vegetative				

Orissa

Vegetables	Dalua Rice	Mustard	Pulses	Early sown pulses
Flowering/Fruiting/Harvesting	Nursery preparation/sowing	Vegetative/Flowering	Vegetative (Biri / Mung / Kulthi)	Pod maturity
Sugarcane	Rabi Groundnut			
Maturity	Vegetative/flowering			

Andhra Pradesh

Rabi Groundnut		Gram		Rabi Maize
Vegetative		Vegetative		Vegetative

Karnataka

	Sugarcane (Ratoon crop & new crop)	<i>Early sown Rabi</i> jowar, wheat and maize		
	End Harvesting	Vegetative		

Kerala

Rubber	Mundakan rice	Pepper		
Tapping	Grain formation	Harvesting		

Tamil Nadu

Rice (Samba)	Millets	Cotton	Early & mid sugarcane	Oilseeds (Groundnut,)
Vegetative	Vegetative	Vegetative	Harvesting	Vegetative
	Sunflower	Pulses (Blach gram and Green gram)		
	Vegetative	Vegetative		
