

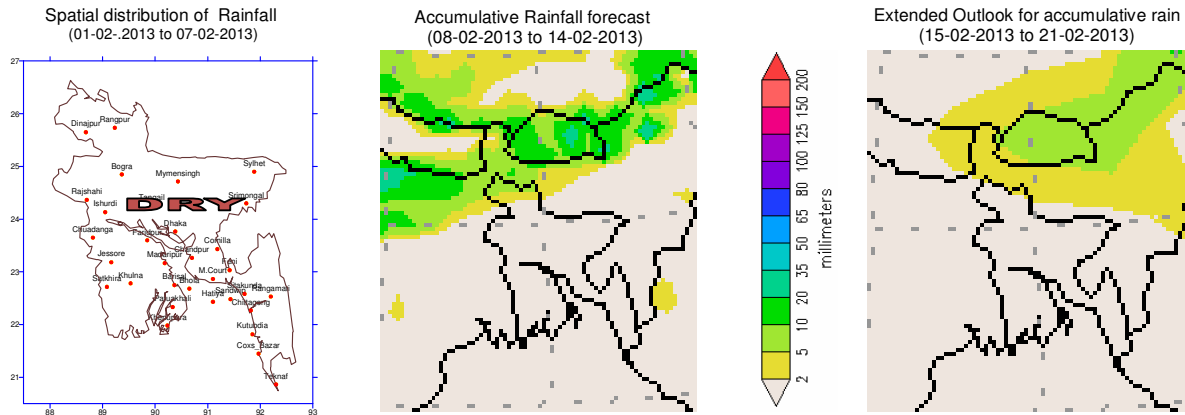


Government of the Peoples' Republic of Bangladesh
Bangladesh Meteorological Department
(Agro-meteorology Division)
Meteorological Complex, Agargaon, Dhaka-1207.

Agm-3 (2)/2013/ 06

Issue date: 10-02-2013

Forecast for the period: 08.02.2013 to 14.02.2013



Highlights:

Country average of bright sunshine hour was 6.69 hours per day during the last week.

Country average of free water loss during the previous week was averaged 3.09 mm per day.

Weather forecast and Advisory for the period of 08.02.2013 to 14.02.2013.

Bright sunshine hour is expected to be between 6.50 to 7.50 hrs per day during this week.

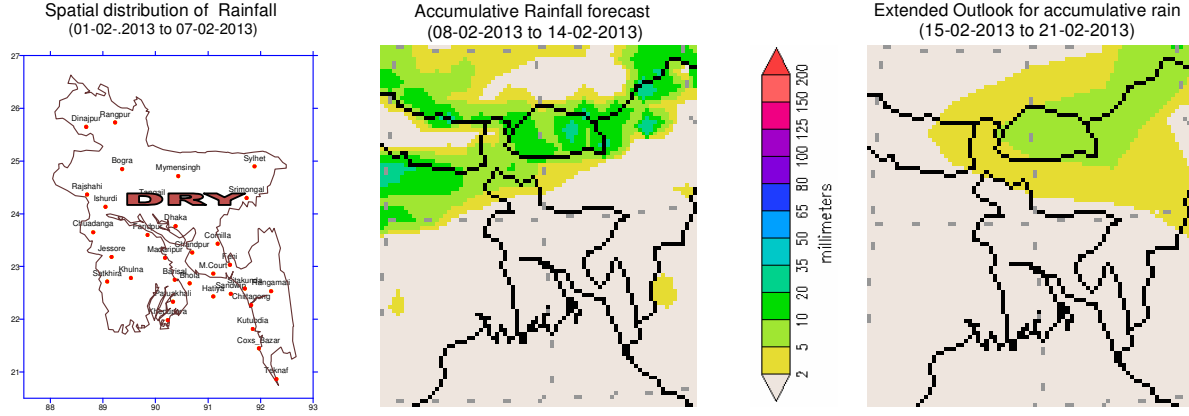
Average of free water loss during the next week is expected to be between 3.00 mm to 4.00 mm per day.

- Ridge of Sub-continental high extends up to West Bengal and adjoining Northwestern part of Bangladesh. Seasonal low lies over South Bay.
- Light rain (4-10 mm)/Thunder showers may occur at one or two places over Khulna, Rajshahi, Dhaka and Sylhet divisions at the end of the period and weather may remain dry with temporary partly cloudy sky over the country in the second half of this period.
- Light fog may continue over northern part along with river basins of the country during late night to till morning.
- Slight fall in night temperature and day temperature may remain nearly unchanged during first half of this period and both the temperature of day and night will rise gradually during second half of this period.
- Supplementary irrigation may require for boro seed bed.

(Md. Saiful Islam Khan)
Asst. Director
For Director
Phone: 8130305(Office)

Bengal Version

পূর্বাভাস, সময়: ০৮-০২-২০১৩ থেকে ১৪-০২-২০১৩



প্রধান বৈশিষ্ট্য সমূহঃ-

গত সপ্তাহে দেশের দৈনিক উজ্জ্বল সূর্যকিরণ কালের গড় ৬.৬৯ ঘণ্টা ছিল।

গত সপ্তাহে দেশের দৈনিক বাষ্পীভবনের গড় ৩.০৯ মিঃ মিঃ ছিল।

আবহাওয়া পূর্বাভাসঃ-০৮-০২-২০১৩ থেকে ১৪-০২-২০১৩ ইং পর্যন্ত।

এ সপ্তাহে দৈনিক উজ্জ্বল সূর্য কিরণ কাল ৬.৫০ থেকে ৭.৫০ এর মধ্যে থাকতে পারে।

আগামী সপ্তাহের বাষ্পীভবনের দৈনিক গড় মান ৩.০০ থেকে মিঃমিঃ থেকে ৪.০০ মিঃমিঃ থাকতে পারে।

- উপমহাদেশীয় উচ্চচাপ বলয়ের বর্ধিতাংশ পশ্চিম বঙ্গ ও তৎসংলগ্ন বাংলাদেশের উত্তরপশ্চিমাঞ্চল পর্যন্ত বিস্তৃত। মৌসুমী লঘুচাপটি দক্ষিণ বঙ্গোপসাগরে অবস্থান করছে।
- এ সপ্তাহের শেষের দিকে খুলনা, রাজশাহী, ঢাকা ও সিলেট বিভাগের দু' এক স্থানে হালকা (৪-১০ মিঃমিঃ) বৃষ্টি/ বজ্রবৃষ্টি হতে পারে।
- এ সপ্তাহের দ্বিতীয়ার্ধে সারাদেশের আকাশ অস্থায়ীভাবে আংশিক মেঘলাসহ আবহাওয়া শুষ্ক থাকতে পারে।
- দেশের উত্তরাঞ্চলের নদী অববাহিকায় এ সময়ে শেষ রাত থেকে সকাল পর্যন্ত হালকা কুয়াশা অব্যাহত থাকতে পারে।
- এ সময়ের প্রথমার্ধে রাতের তাপমাত্রা সামান্য হ্রাস পেতে পারে, দিনের তাপমাত্রা প্রায় অপরিবর্তিত থাকতে পারে এবং দ্বিতীয়ার্ধে সারাদেশের দিন ও রাতের তাপমাত্রা ক্রমান্বয়ে বৃদ্ধি পেতে পারে।
- বোরো বীজ তলার জন্য সম্পূরক সেচের প্রয়োজন হতে পারে।

(মোঃ সাইফুল ইসলাম খান)

সহকারী পরিচালক

পরিচালকের পক্ষে

ফোনঃ ৮১৩০৩০৫(দপ্তর)

Short Weather Description, Period: 01.02.2013 to 07.02.2013

Weather was mainly dry except Barisal over the country during the period.

Highest maximum temperature was recorded in Dhaka Division 24.4-31.7°C Chittagong Division 25.6-33.8°C, Sylhet Division 27.4-32.0°C, Rajshahi Division 22.8-31.1°C, Rangpur Division 24.0-30.5°C Khulna Division 23.8-31.6°C and Barisal Division 25.2-32.0°C.

Extreme maximum temperature was recorded at Dhaka in Dhaka Division 31.7°C, at Cox's Bazar in Chittagong Division 33.8°C, at Sylhet in Sylhet Division 32.0°C, at Bogra in Rajshahi Division 31.1°C, at Dinajpur in Rangpur Division 30.5°C, at Jessore in Khulna 31.6°C and at Khepupara in Barisal Division 32.0°C.

Lowest minimum temperature was recorded in Dhaka Division 10.8-18.0°C, Chittagong Division 11.5-16.8°C, Sylhet Division 9.7-16.4°C, Rajshahi Division 9.4-16.7°C, Rangpur Division 10.6-15.5°C, Khulna Division 10.0-17.0°C and Barisal Division 12.4-16.1°C

Extreme minimum temperature was recorded at Faridpur in Dhaka Division 10.8°C, at Sitakunda in Chittagong Division 11.5°C, at Srimongal in Sylhet Division 9.7°C, at Ishurdi in Rajshahi Division 9.4°C, at in Rangpur & Dinajpur division 10.6°C, at Chuadanga in Khulna Division 10.0°C and at Barisal in Barisal Division 12.4°C.

Rainfall analysis and average temperature: -

| Name of the Divisions | Name of the Stations | Total Rainfall in (mm) | Normal Rainfall in (mm) | Deviation in % | Total Rainy days | Average Max Humidity in % | Average M in Humidity in % | Average Max. temp in °C | Average Normal Max. temp in °C | Average Min. temp in °C | Average Normal Min. temp in °C |
|-----------------------|----------------------|------------------------|-------------------------|----------------|------------------|---------------------------|----------------------------|-------------------------|--------------------------------|-------------------------|--------------------------------|
| Dhaka | Dhaka | 0 | 4 | -100 | 00 | ** | ** | ** | 26.6 | ** | 14.7 |
| | Mymensingh | 0 | 4 | -100 | 00 | 094 | 040 | 28.6 | 25.7 | 14.0 | 13.7 |
| | Faridpur | 0 | 7 | -100 | 00 | 097 | 027 | 28.7 | 25.9 | 13.9 | 13.7 |
| | Madaripur | 0 | 5 | -100 | 00 | 099 | 027 | 28.6 | 26.9 | 13.6 | 14.1 |
| | Tangail | 0 | 6 | -100 | 00 | 094 | 037 | 28.8 | 26.3 | 13.4 | 13.4 |
| Chittagong | Chittagong | 0 | 3 | -100 | 00 | 094 | 024 | 30.8 | 27.0 | 15.5 | 15.1 |
| | Sitakunda | 0 | 4 | -100 | 00 | ** | ** | ** | 27.6 | ** | 13.9 |
| | Rangamati | 0 | 3 | -100 | 00 | 072 | 020 | 29.8 | 27.3 | 13.6 | 14.6 |
| | Cox'sBazar | 0 | 3 | -100 | 00 | 093 | 042 | 30.6 | 27.9 | 15.7 | 16.6 |
| | Teknaf | 0 | 3 | -100 | 00 | 096 | 037 | 28.2 | 28.2 | 13.0 | 16.4 |
| | Hatiya | 0 | 6 | -100 | 00 | 100 | 039 | 29.5 | 26.3 | 13.9 | 15.9 |
| | Sandw ip | 0 | 4 | -100 | 00 | 098 | 031 | 30.2 | 26.3 | 14.5 | 15.8 |
| | Kutubdia | 0 | 5 | -100 | 00 | 098 | 064 | 27.5 | 26.3 | 15.9 | 16.3 |
| | Feni | 0 | 10 | -100 | 00 | 096 | 033 | 29.4 | 26.9 | 14.7 | 14.5 |
| | M.Court | 0 | 6 | -100 | 00 | 098 | 027 | 29.2 | 26.5 | 16.0 | 15.2 |
| | Chandpur | 0 | 3 | -100 | 00 | 095 | 041 | 29.1 | 26.1 | 15.3 | 14.8 |
| | Comilla | 0 | 7 | -100 | 00 | 096 | 037 | 29.0 | 26.4 | 15.2 | 14.4 |
| Sylhet | Sylhet | 0 | 18 | -100 | 00 | 085 | 036 | 30.2 | 26.3 | 15.5 | 13.7 |
| | Srimongal | 0 | 7 | -100 | 00 | 096 | 031 | 29.4 | 26.7 | 11.2 | 11.8 |
| Rajshahi | Rajshahi | 0 | 3 | -100 | 00 | 099 | 038 | 28.2 | 25.8 | 13.0 | 11.9 |
| | Bogra | 0 | 3 | -100 | 00 | 094 | 026 | 29.0 | 26.0 | 14.5 | 13.1 |
| | Ishurdi | 0 | 4 | -100 | 00 | 100 | 030 | 28.0 | 25.6 | 12.3 | 12.0 |
| Rangpur | Rangpur | 0 | 3 | -100 | 00 | 093 | 032 | 27.0 | 24.5 | 13.7 | 11.9 |
| | Dinajpur | 0 | 2 | -100 | 00 | 097 | 021 | 28.1 | 24.9 | 12.6 | 11.5 |
| Khulna | Khulna | 0 | 7 | -100 | 00 | ** | ** | ** | 26.9 | ** | 14.1 |
| | Jessore | 0 | 7 | -100 | 00 | 097 | 035 | 29.1 | 26.8 | 12.4 | 13.2 |
| | Chuadanga | 0 | 7 | -100 | 00 | 094 | 038 | 28.3 | 26.6 | 12.2 | 12.8 |
| | Satkhira | 0 | 9 | -100 | 00 | 098 | ** | 27.8 | 27.1 | ** | 14.3 |
| Barisal | Barisal | Trace | 7 | *** | 01 | 099 | 038 | 28.9 | 26.8 | 13.7 | 13.8 |
| | Bhola | 0 | 5 | -100 | 00 | 098 | 034 | 29.4 | 27.0 | 14.0 | 14.6 |
| | Patuakhali | 0 | 6 | -100 | 00 | 098 | 041 | 29.6 | 27.0 | 14.2 | 15.3 |
| | Khepupara | 0 | 3 | -100 | 00 | 099 | 025 | 30.0 | 27.1 | 14.1 | 15.3 |

N.B. Analyses contained in this bulletin are based on preliminary un-checked data. ** Data not received. *** Data not available.