



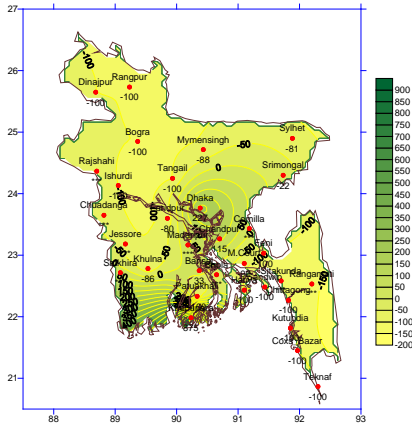
Government of the People's Republic of Bangladesh  
Bangladesh Meteorological Department  
(Agro meteorology Division)  
Meteorological Complex, Agargaon, Dhaka-1207.

Agm-3 (2)/2012/12

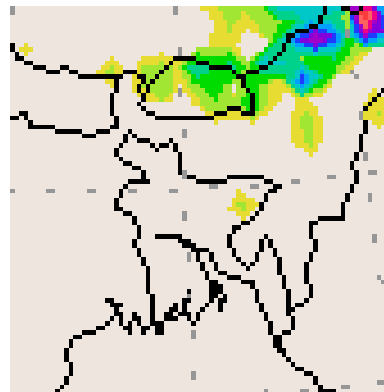
Issue date: 22-03-2012

**Weekly Agromet forecast for the period: 22.03.12 to 31.03.2012**

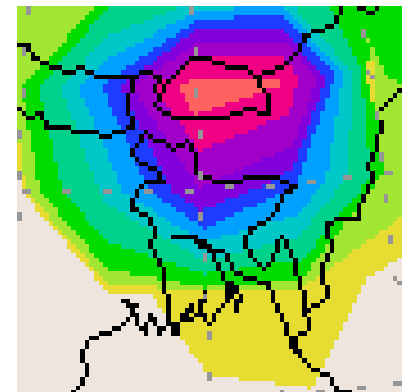
Rainfall Departure as a percentage of Normal  
(15-03-2012 to 21-03-2012)



Accumulated Rainfall forecast  
(22-03-2012 to 31-03-2012)



Extended Outlook for accumulated  
Rainfall (01-04-2012 to 07-04-2012)



***Highlights:***

Free water loss during the previous week was averaged 4.0 mm per day.

Sunshine hour during the previous week was averaged 7.01 hours per day.

***Weather forecast and Advisory for the period of 22.03.2012 to 31.03.2012.***

Free water loss during the next week is expected to be between 3.75 mm to 4.75 mm per day.

Bright sunshine hour during the next week is expected to be between 6.75 hrs to 7.75 hrs per day.

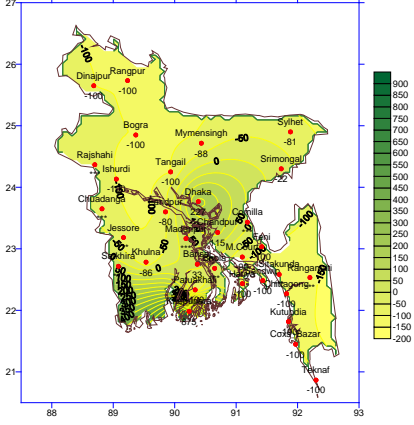
- Seasonal low lies over South Bay.
- Weather is likely to remain mainly dry with temporary partly cloudy sky over the country with a chance of localized isolated light (4mm-10mm) to moderate (10mm-22mm) rain with T. shower accompanied by North-North westerly temporary gusty or squally wind speed 45 to 60 km per hour or more may occur at one or two places over the country during this period.
- Slight rise in day and night temperature is expected over the country during this period.
- Supplementary irrigation may be necessary for Boro crops over the country during this period.
- Weather condition of this period may suitable for application of fertilizer and aerial spray.

(Md. Shameem Hassan Bhuiyan)  
Meteorologist  
For Director  
Agromet Division  
Bangladesh Meteorological Department  
Phone: 8130305 (Office)

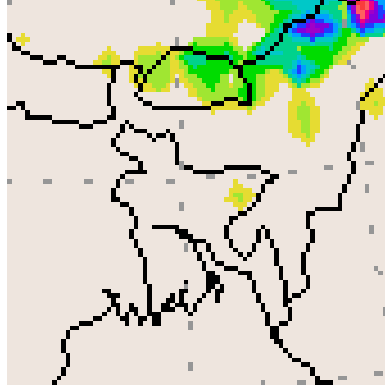
## Bangla Version

পূর্বাভাস, সময়: ২২-০৩-২০১২ থেকে ৩১-০৩-২০১২

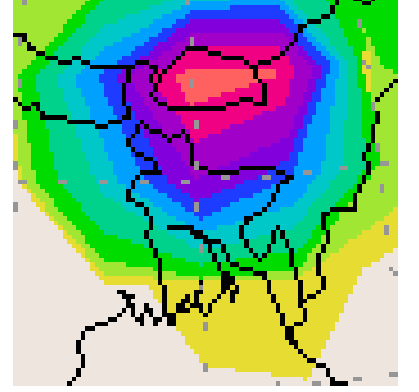
Rainfall Departure as a percentage of Normal  
(15-03-2012 to 21-03-2012)



Accumulated Rainfall forecast  
(22-03-2012 to 31-03-2012)



Extended Outlook for accumulated  
Rainfall (01-04-2012 to 07-04-2012)



### প্রধান বৈশিষ্ট্য সমূহঃ-

গত সপ্তাহের দৈনিক বাষ্পীভবনের গড় ৪ মিঃ মিঃ ছিল।  
গত সপ্তাহের দৈনিক সূর্যকিরণ কালের গড় ৭.০১ ঘন্টা ছিল।

### আবহাওয়া পূর্বাভাসঃ- ২২-০৩-২০১২ইং থেকে ৩১-০৩-২০১২ ইং পর্যন্ত।

আগামী সপ্তাহের বাষ্পীভবনের দৈনিক গড় মান ৩.৭৫ মিঃমিঃ থেকে ৪.৭৫ মিঃমিঃ থাকতে পারে।  
আগামী সপ্তাহের সূর্যকিরণকালের দৈনিক গড় মান ৬.৭৫ ঘন্টা থেকে ৭.৭৫ ঘন্টা থাকতে পারে।

- একটি মৌসুমী লঘুচাপ দক্ষিণ বঙ্গোপসাগরে অবস্থান করছে।
- এ সপ্তাহে সারাদেশের আকাশ অস্থায়ীভাবে আংশিক মেঘলাসহ আবহাওয়া প্রধানতঃ শুষ্ক থাকতে পারে। সেই সাথে স্থানীয়ভাবে দেশের দুই এক স্থানে বিক্ষিপ্ত অবস্থায় ঘন্টায় ৪৫ থেকে ৬০ কিঃমিঃ বা আরও অধিক বেগে দমকা/ঝড়ো হাওয়াসহ হালকা (৪-১০ মিঃমিঃ) থেকে মাঝারী (১০-২২ মিঃমিঃ) ধরনের বৃষ্টি/বজ্র বৃষ্টির সম্ভাবনা রয়েছে।
- এ সময়ে দিন এবং রাতের তাপমাত্রা সামান্য বৃদ্ধি পেতে পারে।
- এ সপ্তাহে দেশের বোরো শস্যে সম্পূরক সেচের প্রয়োজন হতে পারে।
- এ সপ্তাহের আবহাওয়া জমিতে সার ও কীটনাশক প্রয়োগের উপযোগী থাকতে পারে।

(মোঃ শামীম হাসান ভূইয়া)  
আবহাওয়াবিদ  
পরিচালকের পক্ষে  
বাংলাদেশ আবহাওয়া অধিদপ্তর  
ফোন : ৮১৩০৩০৫ (অফিস)

**Short Weather Description, period: 15.03.2012 to 21.03.2012**

Light to moderate rainfall was recorded over many places of the country; .

Maximum rainfall 39 mm was recorded at Khepupara in Barisal division which was 875% above normal.

Minimum rainfall 'Trace' was recorded at Madaripur, Rajshahi, Chuadanga and Satkhira which were not measurable.

Highest maximum temperature was recorded in Dhaka Division 28.0-35.3°C, Chittagong Division 28.5-34.0°C, Sylhet Division 29.8-33.4°C, Rajshahi Division 28.5-37.0°C, Rangpur Division 28.0-34.6°C Khulna Division 30.4-38.2°C and Barisal Division 30.3-34.5°C during this period.

Extreme maximum temperature was recorded at Tangail in Dhaka Division 35.3°C, at Rangamati, M. Court and Hatiya in Chittagong Division 34.0°C, at Srimongal in Sylhet Division 33.4°C, at Ishurdi in Rajshahi Division 37.0°C, at Dinajpur in Rangpur Division 34.6°C, at Jessore in Khulna 38.2°C and at Barisal and Patuakhali in Barisal Division 34.5°C.

Lowest minimum temperature was recorded in Dhaka Division 10.8-24.8°C, Chittagong Division 15.0-25.0°C, Sylhet Division 12.7-22.0°C, Rajshahi Division 15.0-23.3°C, Rangpur Division 14.3-21.4°C, Khulna Division 14.5-24.5°C and Barisal Division 16.8-25.2°C

Extreme minimum temperature was recorded at Madaripur in Dhaka Division 15.8°C, at Rangamati in Chittagong Division 15.0°C, at Srimongal in Sylhet Division 12.7°C, at Rajshahi and Ishurdi in Rajshahi Division 15.0°C, at Rangpur in Rangpur division 14.3°C, at Chuadanga in Khulna Division 14.5°C and Barisal at Barisal Division 16.8°C.

**Rainfall analysis and average temperature :-**

Name of the Divisions	Name of the Stations	Total Rainfall In (mm)	Normal Rainfall In (mm)	Deviation In %	Total Rainy days	Average Max Humidity In %	Average Min Humidity In %	Average Max. temp in °C	Average Normal Max. temp in °C	Average Min. temp in °C	Average Normal Min. temp in °C
Dhaka	Dhaka	36	11	227	02	084	037	31.9	33.4	21.1	21.4
	Mymensingh	1	8	-88	01	095	038	031	31.6	019	19.6
	Faridpur	2	10	-80	02	096	021	032	33.5	020	20.2
	Madaripur	Trace	6	***	01	096	032	032	33.3	020	20.7
	Tangail	0	5	-100	00	092	039	032	32.7	020	19.6
Chittagong	Chittagong	0	10	-100	00	**	**	031	31.3	014	20.9
	Sitakunda	**	9	***	**	**	**	**	31.7	**	20.3
	Rangamati	**	9	***	**	**	**	**	32.6	**	20.1
	Cox'sBazar	0	6	-100	00	083	057	032	31.7	021	21.6
	Teknaf	0	1	-100	00	98	27	31	31.3	20	21.3
	Hatiya	0	12	-100	00	098	038	31	31.3	20	21.6
	Sandw ip	0	5	-100	00	97	47	31	30.8	22	22.3
	Kutubdia	0	6	-100	00	096	038	31.3	30.5	21.2	21.5
	Feni	0	9	-100	00	098	029	032	32.0	020	21.1
	M.Court	1	10	-90	01	100	027	31.4	32.1	20.5	21.3
	Chandpur	28	13	115	02	082	046	32.4	32.4	21.1	21.1
	Comilla	**	9	***	**	**	**	**	31.5	**	20.2
Sylhet	Sylhet	6	32	-81	04	087	036	31.6	31.1	19.2	19.1
	Srimongal	14	18	-22	02	096	015	32	32.3	17.1	17.9
Rajshahi	Rajshahi	Trace	5	***	01	096	015	033	34.1	018	18.5
	Bogra	0	4	-100	00	092	028	032	32.4	020	19.4
	Ishurdi	0	3	-100	00	097	016	33	33.8	18.5	18.8
Rangpur	Rangpur	0	6	-100	00	094	035	014	30.9	017	17.6
	Dinajpur	0	4	-100	00	098	029	31	31.6	17.3	17.7
Khulna	Khulna	1	7	-86	01	100	042	33.3	33.8	21.7	21.0
	Jessore	**	10	***	**	**	**	**	34.2	**	20.1
	Chuadanga	Trace	4	***	01	097	018	33.1	34.5	18.6	19.4
	Satkhira	Trace	4	***	01	098	035	32.1	33.8	21.3	21.1
Barisal	Barisal	8	6	33	03	098	045	32.4	33.1	31	20.8
	Bhola	**	7	***	**	**	**	**	32.5	**	21.6
	Patuakhali	0	3	-100	00	098	050	033.2	32.9	021.7	21.5
	Khepupara	39	4	875	02	098	029	033	32.3	022	22.2