



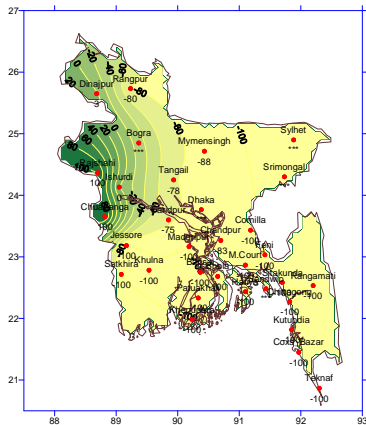
Government of the People's Republic of Bangladesh
Bangladesh Meteorological Department
(Agro meteorology Division)
Meteorological Complex, Agargaon, Dhaka-1207.

Agm-3 (2)/2012/11

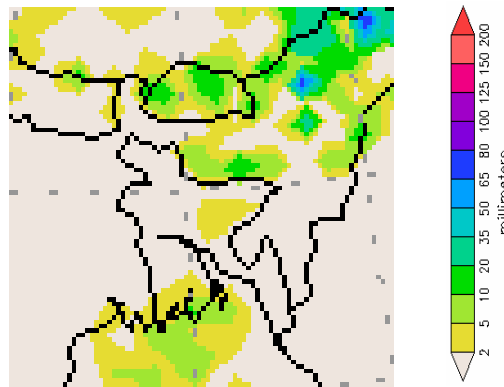
Issue date: 15-03-2012

Weekly Agromet forecast for the period: 15.03.12 to 21.03.2012

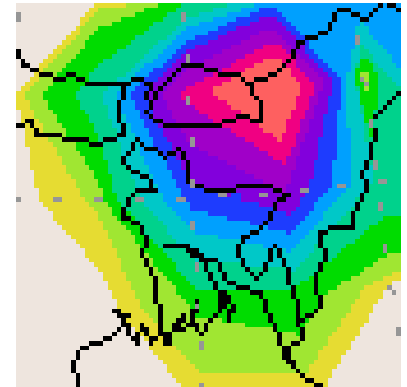
Rainfall Departure as a percentage of Normal
(08-03-2012 to 14-03-2012)



Accumulated Rainfall forecast
(15-03-2012 to 21-03-2012)



Extended Outlook for accumulated
Rainfall (22-03-2012 to 31-03-2012)



Highlights:

Free water loss during the previous week was averaged 4.24 mm per day.
Sunshine hour during the previous was averaged 7.60 hours per day.

Weather forecast and Advisory for the period of 15.03.2012 to 21.03.2012.

Free water loss during the next week is expected to be between 4.00 mm to 4.50 mm per day.
Bright sunshine hour during the next week is expected to be between 7.50 hrs to 8.50 hrs per day.

- Seasonal low lies over South Bay.
- Light to moderate rain / thunder shower accompanied by temporary gusty/squally wind speed 40-60 km or more may occur at few places over sylhet, Dhaka and Chittagong divisions and one or two places elsewhere over the country during the second half of this period.
- Light fog may occur over the River basins of the country during mid night to till morning.
- Supplementary irrigation may be necessary for Boro crops over the country during this period.
- Temperature may remain nearly unchanged over the country during the 1st half of the period, slight rise in day and night temperature is expected during the 2nd half of the period.

(Md. Abdur Rahim)

Meteorologist

Agromet Division

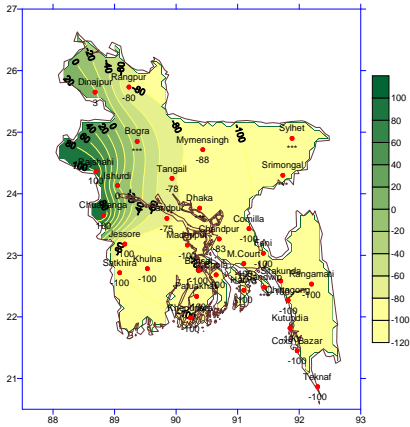
Bangladesh Meteorological Department

Phone: 8130305 (Office)

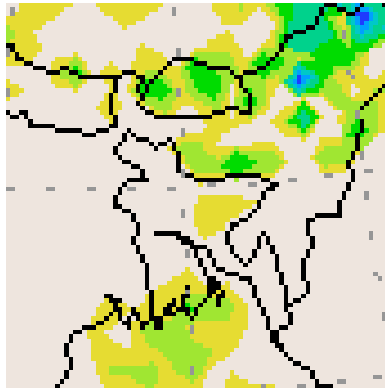
Bangla Version

ceffvm, mgq: 15-03-2012 t_ tK 21-03-2012

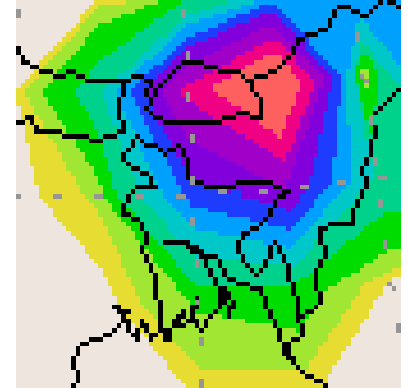
Rainfall Departure as a percentage of Normal
(08-03-2012 to 14-03-2012)



Accumulated Rainfall forecast
(15-03-2012 to 21-03-2012)



Extended Outlook for accumulated
Rainfall (22-03-2012 to 31-03-2012)



câb`eikó` mgnt-

MZ mBvtni ^^wbK ev@úxfetbi Mo 4.24wgt wgt wQj |
MZ mBvtni %wbK mh@Ki Y Kv tj i Mo 7.60 N>Uv wQj |

Avenl qv ceffvmt- 15-03-2012Bs t_ tK 21-03-2012 Bs chS†

AvMvgx mBvtni ev@úxfetbi ^^wbK Mo gvb 4.00 wgtwgt t_ tK 4.50 wgtwgt _vK†Z cv†i |
AvMvgx mBvtni mh@Ki Y Kv tj i ^^wbK Mo gvb 7.50N>Uv t_ tK 8.50 N>Uv _vK†Z cv†i |

- GKwU tgSmgx j NPvcwU `wY Y et†zvcmvM†i Ae`vb Ki†Q |
- G mBvtni wDZxq†a@†m†j U, XvKv, PÆM@g wefv†Mi wKQz wKQz `v†b Ges ††ki Ab`T `†GK `v†b N>Uvq 40-60 wKtwgt ev Avi I AwaK tetM A`vqx `gKv/S†ov nvl qmn nvev t_ tK gvSvix ai†Yi epó/eRêwó†i m@tebv i†q†Q |
- G mBvtni mvi†`†ki b`x AeewmKvq ga` ivZ t_ tK mKvj chS-nvev Kgvkv co†Z cv†i |
- G mg†q mvi†`†k tev†iv k†m` m@ú†K tm†Pi c@qvRb n†Z cv†i |
- G mBvtni c@gv†a@w` b I iv†Zi Zvcgv†v c@q Acw†eZ†Z _vK†Z cv†i Ges wDZxq†a@†m†j b I iv†Zi Zvcgv†v mvgvb` ep†x t†Z cv†i |

(†gvt Avāj i wng)
Avenl qme`
K†l Avenl qv gnvkvLv
evsj v†`k Avenl qv Awa` Bi ,
XvKv-1207 |

Short Weather Description, period: 01.03.2012 to 07.03.2012

Weather was mainly dry over the most places of the country and light rain was recorded elsewhere over the country during the period.

Maximum rainfall 6 mm was recorded at Rajshahi in Rajshahi division which was 100% above normal.

Minimum rainfall 'Trace' was recorded at Dhaka, Sylhet, Srimongal, Sandwip and Bogra which were not measurable.

Highest maximum temperature was recorded in Dhaka Division 29.2-34.4°C Chittagong Division 29.3-34.7°C Sylhet Division 28.6-34.2°C, Rajshahi Division 29.0-33.8°C, Rangpur Division 21.8-31.6°C Khulna Division 31.2-34.5°C and Barisal Division 30.0-35.0°C

Extreme maximum temperature was recorded at Faridpur in Dhaka Division 34.4°C, at Chandpur in Chittagong Division 34.7°C, at Sylhet in Sylhet Division 34.2°C, at Ishurdi in Rajshahi Division 33.8°C, at Dinajpur in Rangpur Division 31.6°C, at Jessore in Khulna 34.5°C and at Barisal in Barisal Division 35.0°C.

Lowest minimum temperature was recorded in Dhaka Division 14.8-24.0°C, Chittagong Division 16.5-24.5°C, Sylhet Division 11.5-21.2°C, Rajshahi Division 13.5-20.5°C, Rangpur Division 12.6-20.4°C, Khulna Division 15.2-23.1°C and Barisal Division 16.8-23.2°C

Extreme minimum temperature was recorded at Tangail in Dhaka Division 14.8°C, at Comilla in Chittagong Division 16.5°C, at Srimongal in Sylhet Division 11.5°C, at Ishurdi in Rajshahi Division 13.5°C, at Dinajpur in Rangpur division 12.6°C, at Chuadanga in Khulna Division 15.2°C and Barisal at Barisal Division 16.8°C.

Rainfall analysis and average temperature: -

Name of the Divisions	Name of the Stations	Total Rainfall in (mm)	Normal Rainfall in (mm)	Deviation in %	Total Rainy days	Average Max Humidity in %	Average Min Humidity in %	Average Max. temp in °C	Average Normal Max. temp in °C	Average Min. temp in °C	Average Normal Min. temp in °C
Dhaka	Dhaka	Trace	12	***	02	080	029	32.6	31.9	21.7	20.0
	Mymensingh	1	8	-88	01	**	**	**	30.5	**	18.2
	Faridpur	2	8	-75	02	096	026	033	31.9	020	18.9
	Madaripur	0	6	-100	00	**	**	**	32.2	**	19.3
	Tangail	2	9	-78	01	**	**	**	31.3	**	18.3
Chittagong	Chittagong	0	3	-100	00	100	015	034	30.4	022	19.7
	Sitakunda	0	3	-100	00	**	**	**	31.0	**	19.0
	Rangamati	0	3	-100	00	**	**	**	32.0	**	19.1
	Cox's Bazar	0	3	-100	00	**	**	**	31.1	**	20.4
	Teknaf	0	1	-100	00	95	17	32	30.8	21	20.1
	Hatiya	0	3	-100	00	073	016	32	30.5	20	20.2
	Sandwip	Trace	5	***	01	96	43	32	29.9	20	21.1
	Kutubdia	0	3	-100	00	072	034	31.4	29.9	21.6	20.5
	Feni	0	8	-100	00	**	**	**	31.2	**	19.8
	M.Court	0	5	-100	00	095	045	31.7	31.2	20.9	19.5
	Chandpur	1	6	-83	01	092	041	33	31.2	20.6	19.9
Comilla	0	8	-100	00	094	045	31.6	30.6	20.6	19.2	
Sylhet	Sylhet	Trace	17	***	02	086	037	31.9	30.7	19.5	18.3
	Srimongal	Trace	13	***	01	**	010	32.4	31.2	16.7	16.8
Rajshahi	Rajshahi	6	3	100	01	**	**	**	32.2	**	17.1
	Bogra	Trace	6	***	01	**	**	**	31.0	**	18.2
	Ishurdi	5	5	0	01	093	014	31.8	32.0	16.7	17.2
Rangpur	Rangpur	1	5	-80	01	**	**	**	29.7	**	16.5
	Dinajpur	3	3	3	01	098	030	29.3	30.3	16.2	16.6
Khulna	Khulna	0	4	-100	00	100	033	33.4	32.5	21.2	19.7
	Jessore	0	7	-100	00	**	**	**	32.8	**	18.7
	Chuadanga	6	3	100	02	095	020	32.8	32.7	17.8	18.1
	Satkhira	0	6	-100	00	095	027	31.8	32.5	20.4	20.0
Barisal	Barisal	0	11	-100	00	098	039	33.1	32.0	20.7	19.7
	Bhola	0	4	-100	00	**	**	**	31.6	**	20.5
	Patuakhali	0	4	-100	00	095	040	033.4	32.0	021.2	20.3
	Khepupara	0	10	-100	00	098	021	034	31.5	022	20.8

