



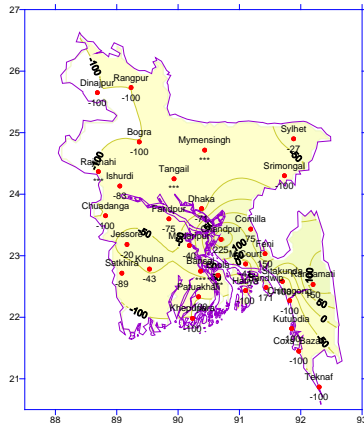
Government of the People's Republic of Bangladesh
Bangladesh Meteorological Department
(Agro meteorology Division)
Meteorological Complex, Agargaon, Dhaka-1207.

Agm-3 (2)/2012/10

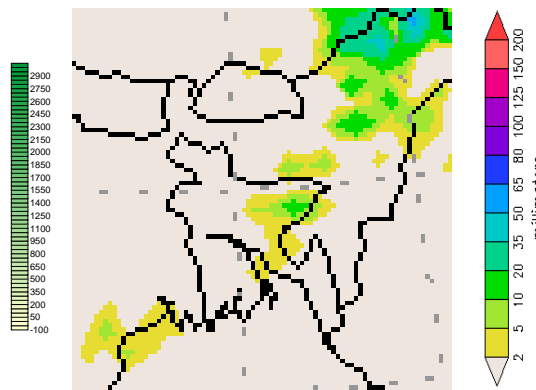
Issue date: 08-03-2012

Weekly Agromet forecast for the period: 08.03.12 to 14.03.2012

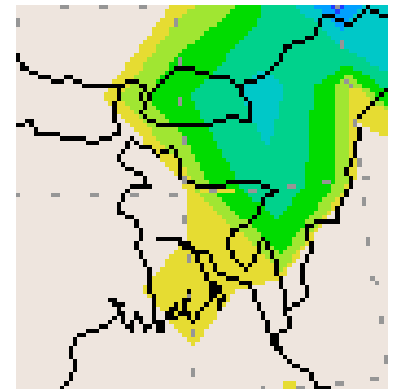
Rainfall Departure as a percentage of Normal
(01-03-2012 to 07-03-2012)



Accumulated Rainfall forecast
(08-03-2012 to 14-03-2012)



Extended Outlook for accumulated
Rainfall (15-03-2012 to 21-03-2012)



Highlights:

Free water loss during the previous week was averaged 3.91 mm per day.

Sunshine hour during the previous was averaged 7.43 hours per day.

Weather forecast and Advisory for the period of 08.03.2012 to 14.03.2012.

Free water loss during the next week is expected to be between 4.25 mm to 5.00 mm per day.

Bright sunshine hour during the next week is expected to be between 7.25 hrs to 8.00 hrs per day.

- Seasonal low lies over South Bay. Trough of low lies over North Bay.
- Light to moderate Rain with thunder shower accompanied by temporary gusty or squally wind may occur at many places over Sylhet division and few places over Chittagong division during the beginning of this period and weather is likely to remain mainly dry with temporary partly cloudy sky over the country during the rest of this period.
- Light fog may occur over the country during mid night to till morning.
- Supplementary irrigation may require for Boro crops over the country during this period.
- Rise in maximum and minimum temperature is expected over the country during this period.

(Md. Abdur Rahim)

Meteorologist

Agromet Division

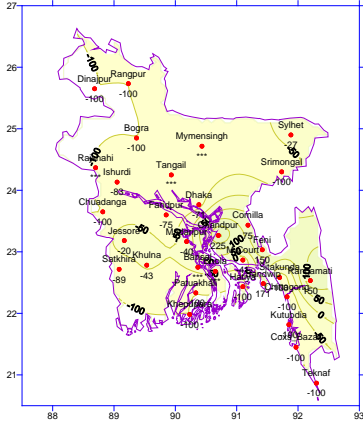
Bangladesh Meteorological Department

Phone: 8130305 (Office)

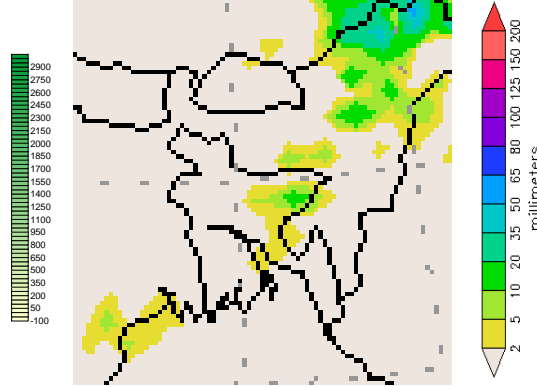
Bangla Version

পূর্বাভাস, সময়: ০৮-০৩-২০১২ থেকে ১৪-০৩-২০১২

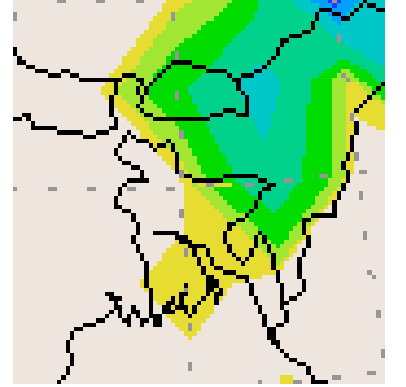
Rainfall Departure as a percentage of Normal
(01-03-2012 to 07-03-2012)



Accumulated Rainfall forecast
(08-03-2012 to 14-03-2012)



Extended Outlook for accumulated
Rainfall (15-03-2012 to 21-03-2012)



প্রধান বৈশিষ্ট্য সমূহঃ-

গত সপ্তাহের দৈনিক বাষ্পীভবনের গড় ৩.৯১ মিঃ মিঃ ছিল।
গত সপ্তাহের দৈনিক সূর্যকিরণ কালের গড় ৭.৪৩ ঘন্টা ছিল।

আবহাওয়া পূর্বাভাসঃ- ০৮-০৩-২০১২ইং থেকে ১৪-০৩-২০১২ ইং পর্যন্ত।

আগামী সপ্তাহের বাষ্পীভবনের দৈনিক গড় মান ৪.২৫ মিঃমিঃ থেকে ৫.০০ মিঃমিঃ থাকতে পারে।
আগামী সপ্তাহের সূর্যকিরণকালের দৈনিক গড় মান ৭.২৫ ঘন্টা থেকে ৮.০০ ঘন্টা থাকতে পারে।

- একটি মৌসুমী লঘুচাপটি দক্ষিণ বঙ্গোপসাগরে অবস্থান করছে। নিম্নচাপ বলয়ের বর্ধিতাংশ উত্তর বঙ্গোপসাগরে অবস্থান করছে।
- এ সপ্তাহে শুরুতে সিলেট বিভাগের অনেক জায়গায় এবং চট্টগ্রাম বিভাগের কিছু কিছু স্থানে অস্থায়ীভাবে দমকা/ঝড়ো হাওয়াসহ হালকা থেকে মাঝারী ধরণের বৃষ্টি/বজ্র বৃষ্টির সম্ভাবনা রয়েছে। সপ্তাহে অবশিষ্টাংশে আকাশ অস্থায়ীভাবে আংশিক মেঘলাসহ আবহাওয়া প্রধানতঃ শুষ্ক থাকতে পারে।
- এ সপ্তাহের সারাদেশে মধ্য রাত থেকে সকাল পর্যন্ত হালকা কুয়াশা পড়তে পারে।
- এ সময়ে সারাদেশে বোরো শস্যে সম্পূরক সেচের প্রয়োজন হতে পারে।
- এ সপ্তাহে দিন ও রাতের সর্বোচ্চ ও সর্বনিম্ন তাপমাত্রা বৃদ্ধি পেতে পারে।

(মোঃ আব্দুর রহিম)

আবহাওয়াবিদ

কৃষি আবহাওয়া মহাশাখা

বাংলাদেশ আবহাওয়া অধিদপ্তর,

ঢাকা-১২০৭।

Short Weather Description, period: 01.03.2012 to 07.03.2012

Light to moderate rainfall was recorded many places over the country and was mainly dry elsewhere over the country during the period.

Maximum rainfall 109 mm was recorded at Feni in Chittagong division which was 2625% above normal.

Minimum rainfall 'Trace' was recorded at Madaripur in Dhaka division which were not measurable.

Highest maximum temperature was recorded in Dhaka Division 29.5-34.8°C Chittagong Division 22.5-33.5°C Sylhet Division 29.1-34.0°C, Rajshahi Division 30.0-35.0°C, Rangpur Division 27.0-31.6°C Khulna Division 30.2-36.2°C and Barisal Division 29.1-34.5°C

Extreme maximum temperature was recorded at Faridpur in Dhaka Division 34.8°C, at Chandpur in Chittagong Division 33.5°C, at Srimongal in Sylhet Division 34.0°C, at Ishurdi in Rajshahi Division 35.0°C, at Dinajpur in Rangpur Division 31.6°C, at Jessore in Khulna 36.2°C and at Barisal in Barisal Division 34.5°C.

Lowest minimum temperature was recorded in Dhaka Division 13.8-23.8°C, Chittagong Division 17.0-23.6°C, Sylhet Division 14.2-21.0°C, Rajshahi Division 13.0-19.8°C, Rangpur Division 12.6-16.7°C, Khulna Division 12.3-22.6°C and Barisal Division 18.6-24.7°C

Extreme minimum temperature was recorded at Tangail in Dhaka Division 13.8°C, at Feni in Chittagong Division 17.0°C, at Srimongal in Sylhet Division 14.2°C, at Rajshahi in Rajshahi Division 13.0°C, at Dinajpur in Rangpur division 12.6°C, at Chuadanga in Khulna Division 12.3°C and at Khepupara Barisal Division 18.6°C.

Rainfall analysis and average temperature :-

Name of the Divisions	Name of the Stations	Total Rainfall in (mm)	Normal Rainfall in (mm)	Deviation in %	Total Rainy days	Average Max Humidity in %	Average Min Humidity in %	Average Max. temp in °C	Average Normal Max. temp in °C	Average Min. temp in °C	Average Normal Min. temp in °C
Dhaka	Dhaka	0	5	-100	00	089	027	32.1	30.6	21.5	18.6
	Mymensingh	0	4	95	00	098	038	031	29.3	017	17.1
	Faridpur	0	4	-100	00				30.5		17.5
	Madaripur	Trace	9	***	01	099	032	32	30.9	20.1	18.2
	Tangail	0	5	-100	00	092	024	32.3	30.0	16.8	16.9
Chittagong	Chittagong	19	0	***	02	100	064	029	29.8	021	18.3
	Sitakunda	0	5	-100	**	**	**	**	30.4	**	17.6
	Rangamati	0	8	-100	**	**	**	**	31.0	**	17.7
	Cox'sBazar	109	4	2625	03	095	072	28.5	30.7	20.6	19.3
	Teknaf	0	0	***	**	**	**	**	30.4	**	19.1
	Hatiya	8	10	-20	02	086	039	30.2	29.6	21.1	19.3
	Sandw ip	0	7	-100	**	**	**	**	29.1	**	19.6
	Kutubdia	30	6	400	02	096	061	28.7	29.0	21.3	19.5
	Feni	8	7	14	01	096	063	30	30.2	19.4	18.3
	M.Court	2	9	-78	01	097	046	31.2	30.3	21.5	18.5
	Chandpur	1	3	-67	01	094	049	32.2	30.2	20.8	18.5
Comilla	0	5	-100	00	095	057	30.4	29.5	21.5	17.9	
Sylhet	Sylhet	89	12	642	05	093	040	30.7	29.5	18	16.9
	Srimongal	3	7	-57	02	096	021	31.8	30.2	16.7	15.6
Rajshahi	Rajshahi	0	4	-100	00	098	010	33.1	30.9	15	15.7
	Bogra	0	8	-100	91	17	32	**	29.7	17	16.8
	Ishurdi	0	4	-100	00	097	011	32.9	30.6	15.1	15.8
Rangpur	Rangpur	0	3	-100	00	089	031	29.2	28.3	14.9	15.0
	Dinajpur	0	2	-100	00	093	014	29.5	28.9	14.5	15.1
Khulna	Khulna	0	5	-100	00	100	027	33	31.2	21.1	18.3
	Jessore	0	7	-100	**	**	**	**	31.5	**	17.4
	Chuadanga	0	4	-100	00	096	027	33.9	31.2	15.7	16.5
	Satkhira	0	7	-100	00	096	020	32	31.2	20.4	18.5
Barisal	Barisal	3	4	***	01	099	043	32.3	30.8	21.7	18.1
	Bhola	0	13	***	**	**	**	**	30.4	**	19.1
	Patuakhali	48	4	1100	03	099	051	032.4	30.9	021.3	19.1
	Khepupara	10	3	233	02	098	041	032	30.6	022	19.7

