



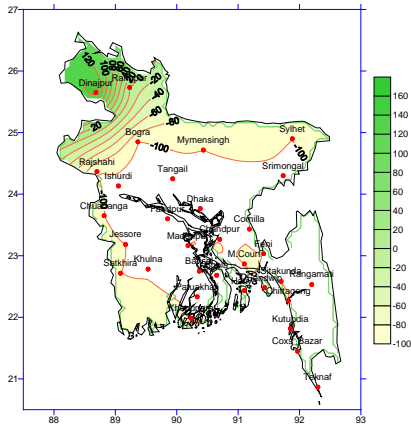
Government of the People's Republic of Bangladesh  
Bangladesh Meteorological Department  
(Agro meteorology Division)  
Meteorological Complex, Agargaon, Dhaka-1207.

Agm-3 (2)/2012/07

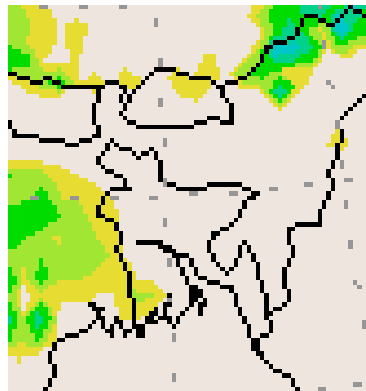
Issue date: 15-02-2012

**Weekly Agromet forecast for the period: 15.02.12 to 21.02.2012**

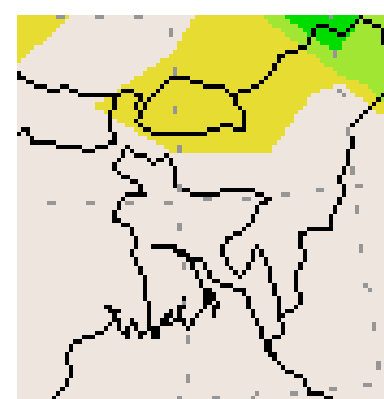
Rainfall Departure as a percentage of Normal  
(08-02-2012 to 14-02-2012)



Accumulated Rainfall forecast  
15-02-2012 to 21-02-2012



Extended Outlook for accumulated  
Rainfall (22-02-2012 to 29-02-2012)



***Highlights:***

Free water loss during the previous week was averaged 3.16 mm per day.

Sunshine hour during the previous was averaged 7.51 hours per day.

***Weather forecast and Advisory for the period of 15.02.2012 to 21.02.2012.***

Free water loss during the next week is expected to be between 3.00 mm to 4.00 mm per day.

Bright sunshine hour during the next week is expected to be between 7.50 hrs to 8.50 hrs per day.

- Seasonal low lies over South Bay.
- Weather is likely to remain mainly dry with temporary partly cloudy sky over the country with a chance of light rain/ drizzle at one or two places over Dhaka, Rajshahi and Rangpur divisions during first half of this period.
- Light fog may occur over the country during mid night to till morning.
- Slight rise in maximum and minimum temperature is expected over the country during this period.
- Weather of this week may be favourable for applying fertilizer and aerial spray.

(Md. Abdur Rahim)

Meteorologist

Agromet Division

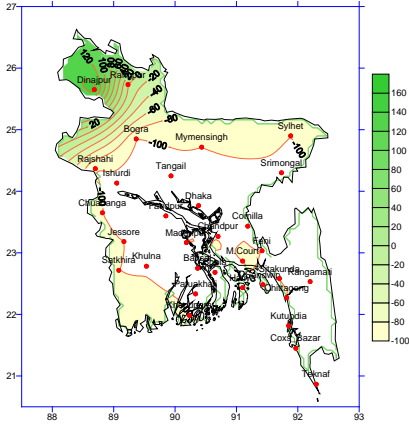
Bangladesh Meteorological Department

Phone: 8130305 (O)

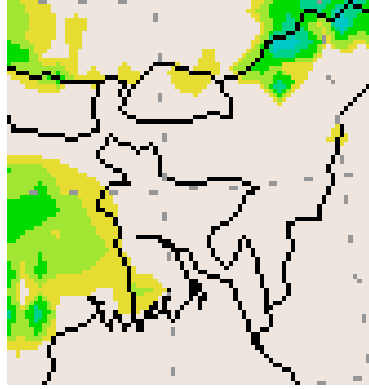
## Bangla Version

পূর্বাভাস, সময়: ১৫-০২-২০১২ থেকে ২১-০২-২০১২

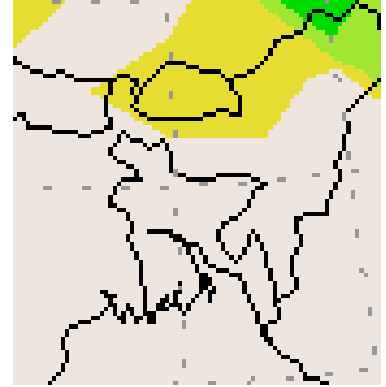
Rainfall Departure as a percentage of Normal  
(08-02-2012 to 14-02-2012)



Accumulated Rainfall forecast  
15-02-2012 to 21-02-2012



Extended Outlook for accumulated  
Rainfall (22-02-2012 to 29-02-2012)



### প্রধান বৈশিষ্ট্য সমূহঃ-

গত সপ্তাহের দৈনিক বাষ্পীভবনের গড় ৩.১৬ মিঃ মিঃ ছিল।  
গত সপ্তাহের দৈনিক সূর্যকিরণ কালের গড় ৭.৫১ ঘন্টা ছিল।

### আবহাওয়া পূর্বাভাসঃ- ১৫-০২-২০১২ইং থেকে ২১-০২-২০১২ ইং পর্যন্ত।

আগামী সপ্তাহের বাষ্পীভবনের দৈনিক গড় মান ৩.০০মিঃমিঃ থেকে ৪.০০ মিঃমিঃ থাকতে পারে।  
আগামী সপ্তাহের সূর্যকিরণকালের দৈনিক গড় মান ৮.০০ ঘন্টা থেকে ৮.৫০ ঘন্টা থাকতে পারে।

- একটি মৌসুমী লঘুচাপটি দক্ষিণ বঙ্গোপসাগরে অবস্থান করছে।
- এ সপ্তাহের প্রথমার্ধে দেশের আকাশ অস্থায়ীভাবে আংশিক মেঘলাসহ আবহাওয়া প্রধানতঃ শুষ্ক থাকতে পারে। সেই সাথে ঢাকা, রাজশাহী এবং রংপুর বিভাগের দুই এক স্থানে হালকা বৃষ্টি/গুড়ি গুড়ি বৃষ্টি হতে পারে।
- এ সপ্তাহের সারাদেশে মধ্য রাত থেকে সকাল পর্যন্ত হালকা কুয়াশা পড়তে পারে।
- এ সপ্তাহে দিন ও রাতের সর্বোচ্চ ও সর্বনিম্ন তাপমাত্রা সামান্য বৃদ্ধি পেতে পারে।
- এ সপ্তাহের আবহাওয়া সার প্রয়োগ ও উপর থেকে কীটনাশক প্রয়োগের উপযোগী থাকতে পারে।

(মোঃ আব্দুর রহিম)  
আবহাওয়াবিদ  
কৃষি আবহাওয়া মহাশাখা  
বাংলাদেশ আবহাওয়া অধিদপ্তর,  
ঢাকা-১২০৭।

**Short Weather Description, period: 08.02.2012 to 14.02.2012**

Weather was mainly dry except Rangpur and Dinajpur over the country during the period.

Maximum rainfall 5 mm was recorded at Dinajpur in Rangpur division which was 150% above normal.

Minimum rainfall 2 mm was recorded at Dinajpur in Rangpur division which was equal to normal.

Highest maximum temperature was recorded in Dhaka Division 23.8-29.2°C Chittagong Division 24.4-31.7, Sylhet Division 25.2-31.0°C, Rajshahi Division 23.8-29.2°C, Rangpur Division 22.6-26.2°C Khulna Division 22.6-30.5°C and Barisal Division 25.2-31.5°C

Extreme maximum temperature was recorded at Faridpur and Madaripur in Dhaka Division 29.2°C, at Sithakunda in Chittagong Division 31.7°C, at Srimongal in Sylhet Division 31.0°C, at Ishurdi in Rajshahi Division 29.2°C, at Rangpur and Dinajpur in Rangpur Division 26.2°C, at Khulna in Khulna 30.5°C and at Khepupara in Barisal Division 31.5°C.

Lowest minimum temperature was recorded in Dhaka Division 8.5-18.6°C, Chittagong Division 9.8-18.8°C, Sylhet Division 5.9-16.5°C, Rajshahi Division 8.0-17.0°C, Rangpur Division 7.5-15.9°C, Khulna Division 8.1-19.5°C and Barisal Division 10.5-17.0°C

Extreme minimum temperature was recorded at Tangail in Dhaka Division 08.5°C, at Rangmati in Chittagong Division 9.8°C, at Srimongal in Sylhet Division 5.9°C, at Ishurdi in Rajshahi Division 8.0°C, at Dinajpur in Rangpur division 7.5°C, at Chuadanga in Khulna Division 8.1°C and at Barisal in Barisal Division 10.5°C.

**Rainfall analysis and average temperature:-**

Name of the Divisions	Name of the Stations	Total Rainfall in (mm)	Normal Rainfall in (mm)	Deviation in %	Total Rainy days	Average Max Humidity in %	Average Min Humidity in %	Average Max. temp in °C	Average Normal Max. temp in °C	Average Min. temp in °C	Average Normal Min. temp in °C
Dhaka	Dhaka	0	4	-100	00	076	028	26.8	27.8	14.8	15.3
	Mymensingh	0	3	-100	00	094	039	25.6	26.9	12.6	14.6
	Faridpur	0	6	-100	00	097	024	27.1	27.2	13.3	14.5
	Madaripur	0	3	-100	00	097	026	27.6	27.9	12.8	14.4
	Tangail	0	4	-100	00	095	035	26.2	27.5	11.8	14.4
Chittagong	Chittagong	0	2	-100	00	100	047	025	28.1	013	15.8
	Sitakunda	0	1	-100	00	**	**	**	28.6	**	14.1
	Rangamati	0	1	-100	00	097	015	026	28.5	013	14.9
	Cox'sBazar	0	2	-100	00	074	051	030	28.9	016	16.9
	Teknaf	0	2	-100	00	**	**	**	29.2	**	16.6
	Hatiya	0	2	-100	00	099	022	28.2	27.6	14.2	16.2
	Sandw ip	0	1	-100	00	096	028	28.6	27.3	14.4	16.3
	Kutubdia	0	1	-100	00	091	029	027	27.4	016	17.0
	Feni	0	2	-100	00	098	022	28.0	28.1	13.6	15.0
	M.Court	0	3	-100	00	**	**	**	27.6	**	15.4
	Chandpur	0	4	-100	00	095	037	27.9	27.4	13.8	15.5
Sylhet	Comilla	0	3	-100	00	092	036	027	27.4	013	15.0
	Sylhet	0	3	-100	00	**	**	**	27.6	**	14.4
Rajshahi	Srimongal	0	4	-100	00	097	011	028	28.1	009	12.2
	Rajshahi	0	4	-100	00	097	024	26.2	27.5	11.0	13.3
	Bogra	0	3	-100	00	092	023	026	27.0	012	14.1
Rangpur	Ishurdi	0	3	-100	00	098	024	26.0	26.9	10.9	12.8
	Rangpur	2	2	0	01	094	042	24.4	25.5	11.4	12.9
Khulna	Dinajpur	5	2	150	01	098	030	24.6	26.3	11.3	12.7
	Khulna	0	3	-100	00	098	029	028	28.2	013	14.9
	Jessore	0	5	-100	00	**	**	**	28.1	**	14.2
	Chuadanga	0	6	-100	00	096	031	26.4	27.8	11.5	14.1
Barisal	Satkhira	0	4	-100	00	097	029	026	28.2	014	15.3
	Barisal	0	4	-100	00	098	036	028	28.0	013	14.5
	Bhola	0	3	-100	00	**	**	**	28.1	**	15.1
	Patuakhali	0	3	-100	00	097	042	28.6	28.3	13.7	15.9
	Khepupara	0	2	-100	00	097	020	28.9	28.3	14.1	16.1

