



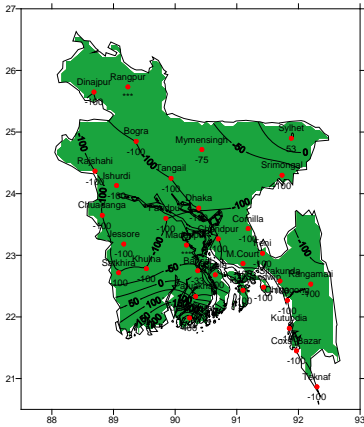
Government of the Peoples' Republic of Bangladesh
 Bangladesh Meteorological Department
 (Meteorological Headquarter)
Meteorological Complex, Agargaon, Dhaka-1207.

Agm-3 (2)/2011/ 12

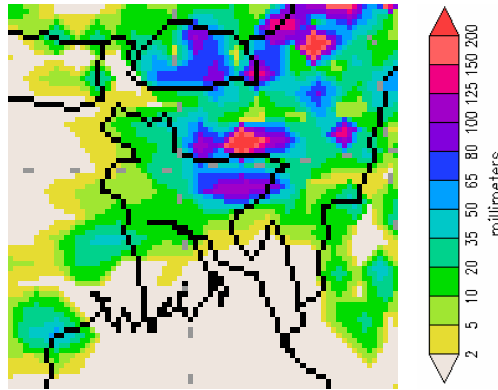
Issue date: 22-03-2011

Forecast for the period: 22.03.2011 to 31.03.2011

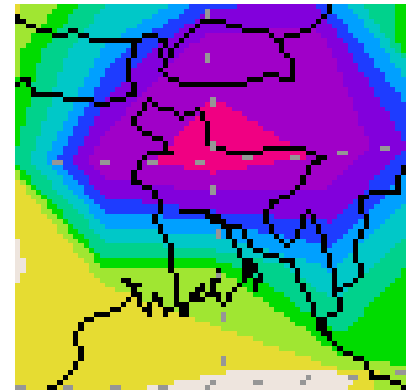
Rainfall Departure as a percentage of Normal
 (15-03-2011 to 21-03-2011)



Rainfall forecast
 (22-03-2011 to 31-03-2011)



Extended Outlook for Rainfall forecast
 01-04-2011 to 07-04-2011)



Highlights:

Free water loss during the previous week was averaged 4.48 mm per day.
 Sunshine hour during the previous was averaged 7.38 hours per day.

Weather forecast and Advisory for the period of 22.03.2011 to 31.03.2011.

Free water loss during the next week is expected to be between 4.00 to 4.50 mm per day.
 Bright sunshine hour during the next week is expected to be between 8.25 to 9.25 hrs per day.

- Seasonal low lies over South Bay.
- Light (4-10mm) to moderate (10-22mm) rain/thunder shower accompanied by temporary gusty/squally wind speed 40-60 km or more may occur at one or two places over Sylhet, Rajshahi, Rangpur and Dhaka divisions during this period. Weather may remain mainly dry elsewhere over the country during this period.
- Supplementary irrigation may be necessary for Boro crops over the country during this period.
- Weather of this week may be favourable for applying fertilizer and aerial spray.
- Slight rise in day and night temperature is expected over the country during the period.

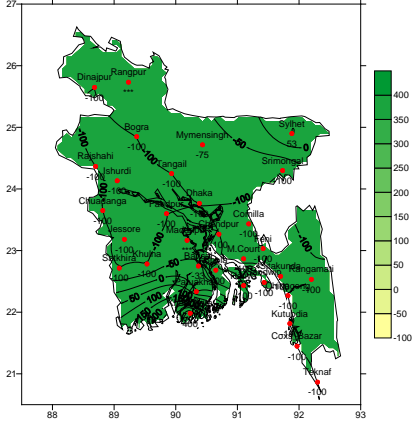
(Md. Shameem Hassan Bhuiyan)

Meteorologist
 For Director

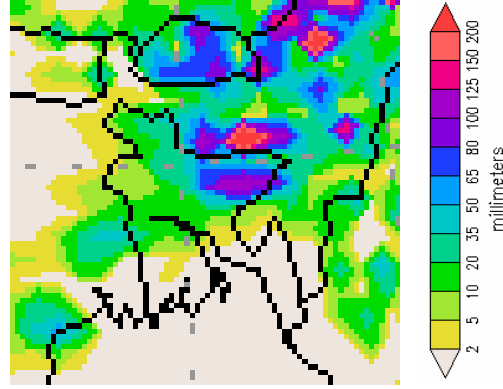
Bangladesh Meteorological Department
 Agargaon, Dhaka-1207
 Phone : 9143691

পূর্বাভাস, সময়: ২২-০৩-২০১১ থেকে ৩১-০৩-২০১১

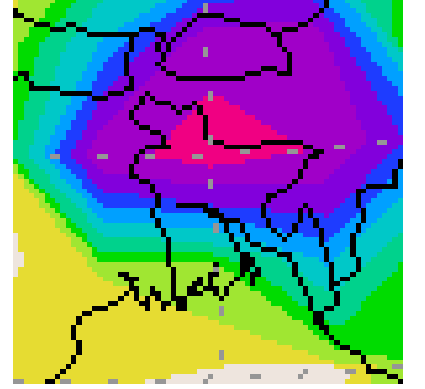
Rainfall Departure as a percentage of Normal
(15-03-2011 to 21-03-2011)



Rainfall forecast
(22-03-2011 to 31-03-2011)



Extended Outlook for Rainfall forecast
01-04-2011 to 07-04-2011)



প্রধান বৈশিষ্ট্য সমূহঃ-

- গত সপ্তাহের দৈনিক বাষ্পীভবনের গড় ৪.৪৮ মিঃমিঃ ছিল।
- গত সপ্তাহের দৈনিক সূর্যকিরণ কালের গড় ৭.৩৮ ঘন্টা ছিল।

আবহাওয়া পূর্বাভাসঃ- ২২-০৩-২০১১ ইং থেকে ৩১-০৩-২০১১ ইং পর্যন্ত।

- আগামী সপ্তাহের বাষ্পীভবনের দৈনিক গড় মান ৪.০০ মিঃমিঃ থেকে ৪.৫০ মিঃমিঃ থাকতে পারে।
- আগামী সপ্তাহের সূর্যকিরণকালের দৈনিক গড় মান ৮.২৫ ঘন্টা থেকে ৯.২৫ ঘন্টা থাকতে পারে।

- দক্ষিণ বঙ্গোপসাগরে একটি মৌসুমী লঘুচাপ অবস্থান করছে।
- এ সপ্তাহে সিলেট, রাজশাহী, রংপুর এবং ঢাকা বিভাগের দু-এক স্থানে ঘন্টায় ৪০-৬০ কিঃমি বা আরও অধিক বেগে অস্থায়ী দমকা / ঝড়ো হাওয়া সহ হালকা (৪-১০ মিঃ মিঃ) থেকে মাঝারী (১০-২২ মিঃমিঃ) ধরনের বৃষ্টি / বজ্র বৃষ্টির সম্ভাবনা রয়েছে। দেশের অন্যত্র আবহাওয়া প্রধানতঃ শুষ্ক থাকতে পারে।
- এ সময়ে বোরো শস্যের জন্য সম্পূরক সেচের প্রয়োজন হতে পারে।
- এ সপ্তাহের আবহাওয়া সার প্রয়োগ ও উপর থেকে কীটনাশক ছিটানোর উপযোগী থাকতে পারে।
- এ সপ্তাহে সারাদেশে দিন ও রাতের তাপমাত্রা সামান্য বৃদ্ধি পেতে পারে।

(মোঃ শামীম হাসান ভূইয়া)

আবহাওয়াবিদ

পরিচালকের পক্ষে

বাংলাদেশ আবহাওয়া অধিদপ্তর, ঢাকা-১২০৭।

Short Weather Description, Period: 15.02.2011 to 21.02.2011

Weather was mainly dry over the country except Mymensingh, Madaripur, Sylhet, Chittagong, Rangpur, Barisal, Patuakhali and Khepupara during the period.

Maximum rainfall was recorded at Sylhet in Sylhet division, which was 53% above normal.

Minimum rainfall 'Trace' was recorded at Madaripur, Chittagong and Rangpur, which is not measurable.

Highest maximum temperature was recorded in Dhaka Division 28.4-36.4°C Chittagong Division 27.5-35.0°C, Sylhet Division 28.6-35.7°C, Rajshahi Division 30.4-38.0°C, Rangpur Division 24.8-35.6°C Khulna Division 31.2-37.5°C and Barisal Division 29.1-34.5°C

Extreme maximum temperature was recorded at Tangail and Faridpur in Dhaka Division 34.6°C, at Rangamati in Chittagong Division 35.0°C, at Sylhet in Sylhet Division 35.7°C, at Rajshahi & Ishurdi in Rajshahi Division 38.0°C, at Dinajpur in Rangpur Division 35.6°C, at Chuadanga in Khulna 37.5°C and at Patuakhali in Barisal Division 34.5 °C

Lowest minimum temperature was recorded in Dhaka Division 17.8-24.8°C, Chittagong Division 16.8-25.0°C, Sylhet Division 15.3-23.5°C, Rajshahi Division 14.4-25.8°C, Rangpur Division 16.2-22.0°C, Khulna Division 17.1-25.3°C and Barisal Division 18.5-25.2°C

Extreme minimum temperature was recorded at Faridpur in Dhaka Division 17.8°C, at Sandwip in Chittagong Division 16.8°C, at Srimongal in Sylhet Division 15.3°C, at Ishurdi in Rajshahi Division 14.4°C, at Dinajpur in Rangpur division 16.2°C, Chuadanga in Khulna Division 17.1°C and at Barisal & Patuakhali in Barisal Division 18.5°C.

Rainfall analysis and average temperature: -

Name of the Divisions	Name of the Stations	Total Rainfall in (mm)	Normal Rainfall in (mm)	Deviation in %	Total Rainy days	Average Max Humidity in %	Average Min Humidity in %	Average Max. temp in °C	Average Normal Max. temp in °C	Average Min. temp in °C	Average Normal Min. temp in °C
Dhaka	Dhaka	0	11	-100	00	079	040	32.6	33.4	22.6	21.4
	Mymensingh	2	8	-75	02	092	053	30.8	31.6	21.4	19.6
	Faridpur	0	10	-100	00	093	031	32.9	33.5	21.4	20.2
	Madaripur	Trace	6	***	01	096	040	32.4	33.3	21.1	20.7
	Tangail	0	5	-100	00	093	048	32.6	32.7	21.1	19.6
Chittagong	Chittagong	Trace	10	***	01	095	026	031	31.3	021	20.9
	Sitakunda	0	9	-100	00	**	**	**	31.7	**	20.3
	Rangamati	0	9	-100	00	**	**	**	32.6	**	20.1
	Cox'sBazar	0	6	-100	00	078	068	31	31.7	20.0	21.6
	Teknaf	0	1	-100	00	**	**	**	31.3	**	21.3
	Hatiya	0	12	-100	00	**	**	**	31.3	**	21.6
	Sandwip	0	5	-100	00	092	057	30.1	30.8	22.0	22.3
	Kutubdia	0	6	-100	00	090	053	29.2	30.5	21.4	21.5
	Feni	0	9	-100	00	**	**	**	32.0	**	21.1
	M.Court	0	10	-100	00	096	039	31.2	32.1	21.6	21.3
	Chandpur	0	13	-100	00	091	050	32.2	32.4	21.3	21.1
Comilla	0	9	-100	00	090	046	30.1	31.5	20.7	20.2	
Sylhet	Sylhet	49	32	53	05	081	042	32.1	31.1	20.6	19.1
	Srimongal	0	18	-100	00	092	028	31.7	32.3	19.8	17.9
Rajshahi	Rajshahi	0	5	-100	00	096	019	35.2	34.1	20.7	18.5
	Bogra	0	4	-100	00	**	**	**	32.4	**	19.4
	Ishurdi	0	3	-100	00	**	**	**	33.8	**	18.8
Rangpur	Rangpur	Trace	6	***	01	090	049	30.7	30.9	19.2	17.6
	Dinajpur	0	4	-100	01	095	014	31.5	31.6	18.8	17.7
Khulna	Khulna	0	7	-100	00	096	040	32.8	33.8	22.3	21.0
	Jessore	0	10	-100	00	**	**	**	34.2	**	20.1
	Chuadanga	0	4	-100	00	097	025	34.8	34.5	20.8	19.4
	Satkhira	0	4	-100	00	**	**	**	33.8	**	21.1
Barisal	Barisal	4	6	-33	01	**	**	**	33.1	**	20.8
	Bhola	0	7	-100	00	**	**	**	32.5	**	21.6
	Patuakhali	3	3	0	01	095	052	32.2	32.9	22.2	21.5
	Khepupara	20	4	400	01	098	024	30.9	32.3	22.3	22.2

N.B. Analyses contained in this bulletin are based on preliminary un-checked data.

** Data not received. *** Data not available.