



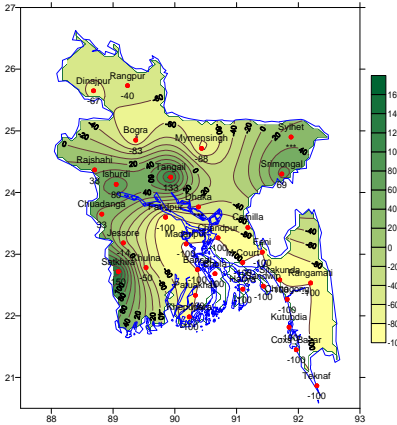
Government of the Peoples' Republic of Bangladesh
Bangladesh Meteorological Department
(Meteorological Headquarter)
Meteorological Complex, Agargaon, Dhaka-1207.

Agm-3 (2)/2011/ 11

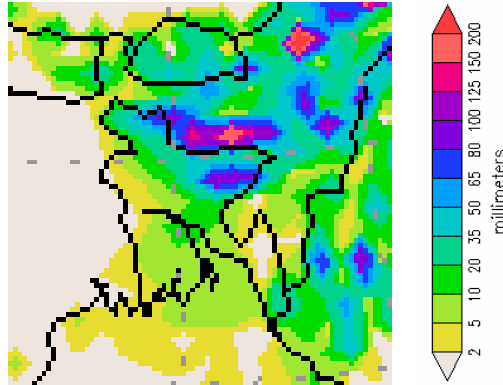
Issue date: 15-03-2011

Forecast for the period: 15.03.2011 to 21.03.2011

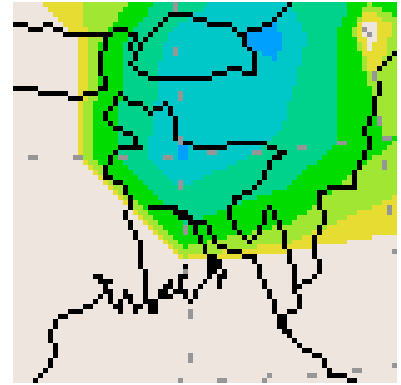
Rainfall Departure as a percentage of Normal
(08-03-2011 to 14-03-2011)



Rainfall forecast
(15-03-2011 to 21-03-2011)



Extended Outlook for Rainfall forecast
22-03-2011 to 31-03-2011)



Highlights:

Free water loss during the previous week was averaged 3.91 mm per day.
Sunshine hour during the previous was averaged 7.92 hours per day.

Weather forecast and Advisory for the period of 15.03.2011 to 21.03.2011.

Free water loss during the next week is expected to be between 3.75 to 4.75 mm per day.
Bright sunshine hour during the next week is expected to be between 7.50 to 8.50 hrs per day.

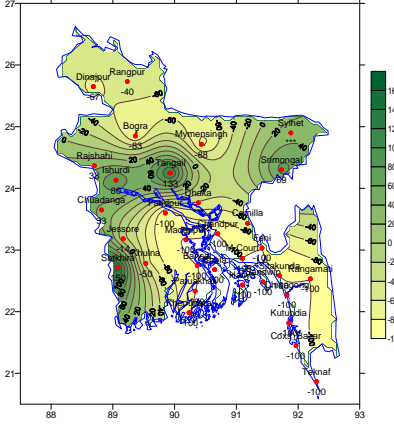
- Trough of westerly low lies over West Bengal and adjoining area. Seasonal low lies over South Bay.
- Light to moderate rain/thunder shower accompanied by temporary gusty/squally wind speed 40-60 km or more may occur at few places over Sylhet, Dhaka and Chittagong divisions and one or two places elsewhere over the country during the second half of this period.
- Supplementary irrigation may be necessary for Boro crops over the country during this period.
- Slight rise in day and night temperature is expected over the country during the period.

(Md. Shameem Hassan Bhuian)

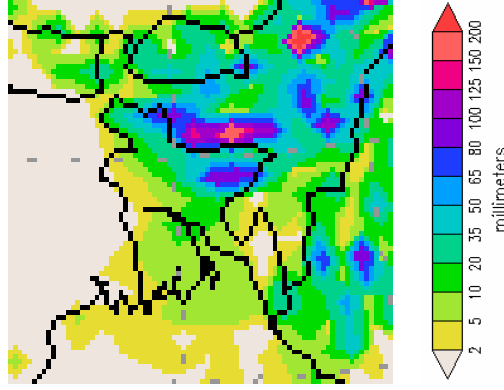
Meteorologist
For Director
Bangladesh Meteorological Department
Agargaon, Dhaka-1207
Phone : 9143691

পূর্বাভাস, সময়: ১৫-০৩-২০১১ থেকে ২১-০৩-২০১১

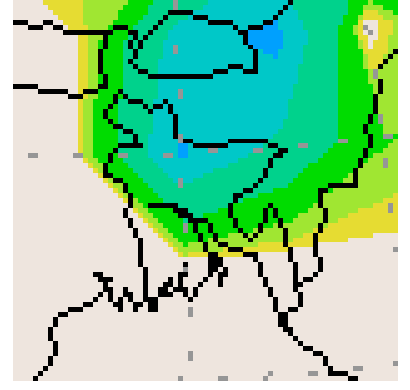
Rainfall Departure as a percentage of Normal
(08-03-2011 to 14-03-2011)



Rainfall forecast
(15-03-2011 to 21-03-2011)



Extended Outlook for Rainfall forecast
(22-03-2011 to 31-03-2011)



প্রধান বৈশিষ্ট্য সমূহঃ-

- গত সপ্তাহের দৈনিক বাষ্পীভবনের গড় ৩.৯১ মিঃমিঃ ছিল।
- গত সপ্তাহের দৈনিক সূর্যকিরণ কালের গড় ৭.৯২ ঘন্টা ছিল।

আবহাওয়া পূর্বাভাসঃ- ১৫-০৩-২০১১ ইং থেকে ২১-০৩-২০১১ ইং পর্যন্ত।

- আগামী সপ্তাহের বাষ্পীভবনের দৈনিক গড় মান ৩.৭৫ মিঃমিঃ থেকে ৪.৭৫ মিঃমিঃ থাকতে পারে।
- আগামী সপ্তাহের সূর্যকিরণকালের দৈনিক গড় মান ৭.৫০ ঘন্টা থেকে ৮.৫০ ঘন্টা থাকতে পারে।

- ঈশিমা লঘুচাপের বর্ধিতাংশ পশ্চিম বঙ্গ ও তৎসংলগ্ন এলাকায় অবস্থান করছে। দক্ষিণ বঙ্গোপসাগরে একটি মৌসুমী লঘুচাপ অবস্থান করছে।
- এ সপ্তাহের দ্বিতীয়ার্ধে সিলেট, ঢাকা ও চট্টগ্রাম বিভাগের কিছু কিছু স্থানে এবং দেশের অন্যত্র দুই এক স্থানে ঘন্টায় ৪০-৬০ কিঃমিঃ বা আরও অধিক বেগে অস্থায়ী দমকা / ঝড়ো হাওয়া সহ হালকা থেকে মাঝারী ধরনের বৃষ্টি / বজ্র বৃষ্টির সম্ভাবনা রয়েছে।
- এ সময়ে বোরো শস্যের জন্য সম্পূরক সেচের প্রয়োজন হতে পারে।
- এ সপ্তাহে সারাদেশে দিন ও রাতের তাপমাত্রা সামান্য বৃদ্ধি পেতে পারে।

(মোঃ শামীম হাসান ভূঁইয়া)

আবহাওয়াবিদ

পরিচালকের পক্ষে

বাংলাদেশ আবহাওয়া অধিদপ্তর, ঢাকা-১২০৭।

Short Weather Description, Period : 08.02.2011 to 14.02.2011

Light to moderate rainfall was recorded over Sylhet, Rajshahi, Rangpur, Khulna division and Dhaka, Mymensingh in Dhaka division and Comilla in Chittagong division. Weather was mainly dry elsewhere over the country during the period.

Maximum rainfall was recorded at Srimongal in Sylhet division, which was 69% above normal.

Minimum rainfall 'Trace' was recorded at Dhaka, Comilla and Sylhet, which is not measurable.

Highest maximum temperature was recorded in Dhaka Division 28.6-34.8°C Chittagong Division 28.9-35.2°C, Sylhet Division 30.7-33.8°C, Rajshahi Division 29.2-34.6°C, Rangpur Division 28.2-33.5°C Khulna Division 29.6-35.8°C and Barisal Division 30.9-36.7°C

Extreme maximum temperature was recorded at Madaripur in Dhaka Division 34.8°C, at Chandpur in Chittagong Division 35.2°C, at Sylhet in Sylhet Division 33.8°C, at Ishurdi in Rajshahi Division 34.6°C, at Dinajpur in Rangpur Division 33.5°C, at Jessore in Khulna 35.8°C and at Patuakhali in Barisal Division 36.7 °C

Lowest minimum temperature was recorded in Dhaka Division 15.5-24.2°C, Chittagong Division 14.0-22.5°C, Sylhet Division 13.0-20.4°C, Rajshahi Division 14.5-21.5°C, Rangpur Division 15.6-18.6°C, Khulna Division 13.8-23.0°C and Barisal Division 16.5-22.8°C

Extreme minimum temperature was recorded at Faridpur in Dhaka Division 15.5°C, at Sitakunda in Chittagong Division 14.0°C, at Srimongal in Sylhet Division 13.0°C, at Ishurdi in Rajshahi Division 14.5°C, at Dinajpur in Rangpur division 15.6°C, Jessore and Chuadanga in Khulna Division 13.8°C and at Barisal in Barisal Division 16.5°C.

Rainfall analysis and average temperature:-

Name of the Divisions	Name of the Stations	Total Rainfall in (mm)	Normal Rainfall in (mm)	Deviation in %	Total Rainy days	Average Max Humidity in %	Average Min Humidity in %	Average Max. temp in °C	Average Normal Max. temp in °C	Average Min. temp in °C	Average Normal Min. temp in °C
Dhaka	Dhaka	Trace	12	***	01	072	029	32.5	31.9	21.4	20.0
	Mymensingh	2	8	-75	02	090	043	29.9	30.5	18.8	18.2
	Faridpur	0	8	-100	00	091	019	32.7	31.9	19.3	18.9
	Madaripur	0	6	-100	00	097	027	32.7	32.2	18.8	19.3
	Tangail	21	9	133	02	093	038	032	31.3	019	18.3
Chittagong	Chittagong	0	3	-100	00	100	026	33.3	30.4	020	19.7
	Sitakunda	0	3	-100	00	097	016	34.0	31.0	16.6	19.0
	Rangamati	0	3	-100	00	**	**	**	32.0	**	19.1
	Cox'sBazar	0	3	-100	00	076	053	034	31.1	053	20.4
	Teknaf	0	1	-100	00	**	**	**	30.8	**	20.1
	Hatiya	0	3	-100	00	**	**	**	30.5	**	20.2
	Sandwip	0	5	-100	00	096	039	32.5	29.9	19.0	21.1
	Kutubdia	0	3	-100	00	091	028	30.9	29.9	19.8	20.5
	Feni	0	8	-100	00	097	023	32.7	31.2	19.0	19.8
	M.Court	0	5	-100	00	097	041	32.7	31.2	19.7	19.5
	Chandpur	0	6	-100	00	093	035	33.0	31.2	20.0	19.9
	Comilla	Trace	8	***	01	092	044	31.4	30.6	19.0	19.2
Sylhet	Sylhet	Trace	17	***	02	078	032	32.4	30.7	19.1	18.3
	Srimongal	22	13	69	02	098	018	31.9	31.2	16.1	16.8
Rajshahi	Rajshahi	4	3	33	01	096	022	32.6	32.2	17.4	17.1
	Bogra	1	6	-83	01	093	029	31.3	31.0	18.8	18.2
	Ishurdi	9	5	80	02	**	**	**	32.0	**	17.2
Rangpur	Rangpur	3	5	-40	01	092	038	30.0	29.7	17.3	16.5
	Dinajpur	1	3	-67	01	096	027	30.5	30.3	16.9	16.6
Khulna	Khulna	2	4	-50	01	098	029	33.2	32.5	19.9	19.7
	Jessore	6	7	-14	04	**	**	**	32.8	**	18.7
	Chuadanga	4	3	33	01	095	021	33.4	32.7	18.4	18.1
	Satkhira	15	6	150	01	096	018	32.2	32.5	20.1	20.0
Barisal	Barisal	0	11	-100	00	094	036	33.3	32.0	19.4	19.7
	Bhola	0	4	-100	00	**	**	**	31.6	**	20.5
	Patuakhali	0	4	-100	00	099	032	34.7	32.0	19.3	20.3
	Khepupara	0	10	-100	00	098	017	033	31.5	019	20.8

N.B. Analyses contained in this bulletin are based on preliminary un-checked data.

** Data not received. *** Data not available.