



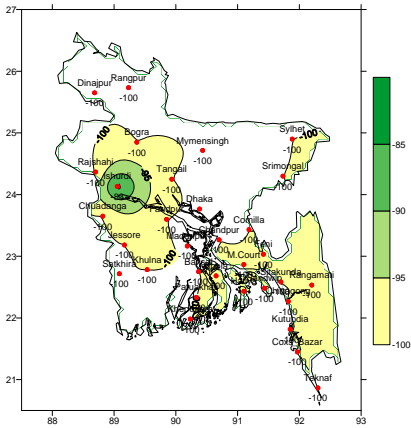
Government of the Peoples' Republic of Bangladesh
Bangladesh Meteorological Department
(Meteorological Headquarter)
Meteorological Complex, Agargaon, Dhaka-1207.

Agm-3 (2)/2011/ 09

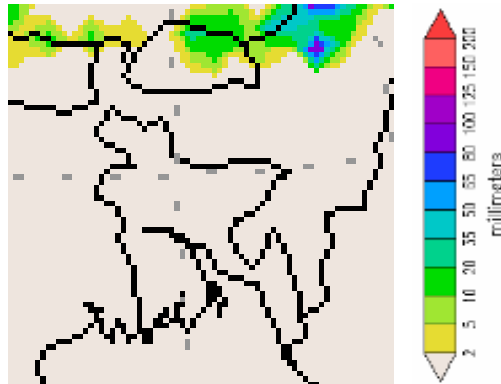
Issue date: 01-03-2011

Forecast for the period: 01.03.2011 to 07.03.2011

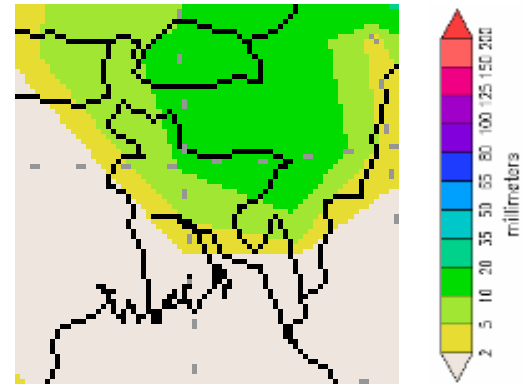
Rainfall Departure as a percentage of Normal
(22-02-2011 to 28-02-2011)



Rainfall forecast
(01-03-2011 to 07-03-2011)



Extended Outlook for Rainfall forecast
08-03-2011 to 14-03-2011)



Highlights:

Free water loss during the previous week was averaged 3.63 mm per day.
Sunshine hour during the previous week was averaged 9.13 hours per day.

Weather forecast and Advisory for the period of 01.03.2011 to 07.03.2011.

Free water loss during the next week is expected to be between 3.50 to 4.50 mm per day.
Bright sunshine hour during the next week is expected to be between 8.0 to 9.0 hrs per day.

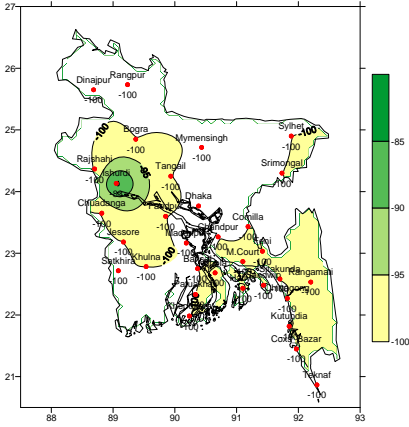
- Seasonal low lies over South Bay.
- Weather may remain mainly dry with temporary partly cloudy sky over the country during the period.
- Light to moderate fog may occur over the river basins of the country during late night till morning.
- Supplementary irrigation may necessary for Boro crops over the country during this period.
- Weather of this week may be favourable for applying fertilizer and aerial spray.
- Day and night temperature may remain nearly unchanged over the country during the first half of this period and slight rise in day temperature is expected over the country during the second half of this period.

(Surajit Kumar Saha)

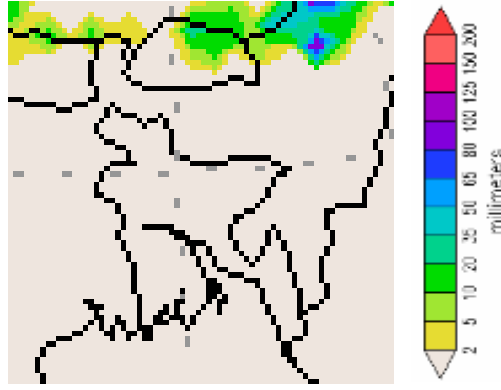
Dy-Director
For Director
Bangladesh Meteorological Department
Agargaon, Dhaka-1207
Phone : 9143691

পূর্বাভাস, সময়: ০১-০৩-২০১১ থেকে ০৭-০৩-২০১১

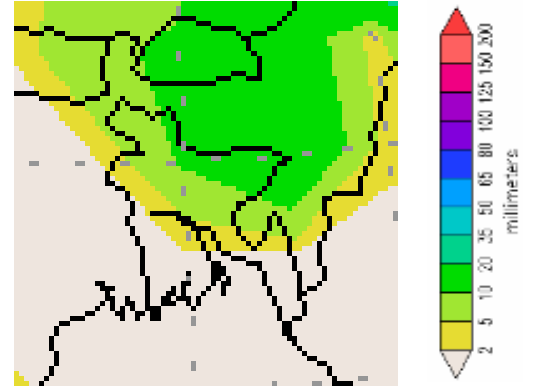
Rainfall Departure as a percentage of Normal
(22-02-2011 to 28-02-2011)



Rainfall forecast
(01-03-2011 to 07-03-2011)



Extended Outlook for Rainfall forecast
(08-03-2011 to 14-03-2011)



প্রধান বৈশিষ্ট্য সমূহঃ-

- গত সপ্তাহের দৈনিক বাষ্পীভবনের গড় ৩.৬৩ মিঃমিঃ ছিল।
- গত সপ্তাহের দৈনিক সূর্যকিরণ কালের গড় ৯.১৩ ঘন্টা ছিল।

আবহাওয়া পূর্বাভাসঃ- ০১-০৩-২০১১ ইং থেকে ০৭-০৩-২০১১ ইং পর্যন্ত।

- আগামী সপ্তাহের বাষ্পীভবনের দৈনিক গড় মান ৩.৫০ মিঃমিঃ থেকে ৪.৫০ মিঃমিঃ থাকতে পারে।
- আগামী সপ্তাহের সূর্যকিরণকালের দৈনিক গড় মান ৮.০ ঘন্টা থেকে ৯.০ ঘন্টা থাকতে পারে।

- দক্ষিণ বঙ্গোপসাগরে একটি মৌসুমী লঘুচাপ অবস্থান করছে।
- এ সপ্তাহে আকাশ অস্থায়ী ভাবে আংশিক মেঘলাসহ সারাদেশের আবহাওয়া প্রধানতঃ শুষ্ক থাকতে পারে।
- এ সময়ে শেষ রাত থেকে সকাল পর্যন্ত দেশের নদী অববাহিকায় হালকা থেকে মাঝারী ধরনের কুয়াশা পড়তে পারে।
- এ সময়ে বোরো শস্যের জন্য সম্পূরক সেচের প্রয়োজন হতে পারে।
- এ সপ্তাহের আবহাওয়া সার প্রয়োগ ও উপর থেকে কীটনাশক ছিটানোর উপযোগী থাকতে পারে।
- এ সপ্তাহের প্রথমার্ধে দিন ও রাতের তাপমাত্রা প্রায় অপরিবর্তিত থাকতে পারে এবং দ্বিতীয়ার্ধে দিনের তাপমাত্রা সামান্য বৃদ্ধি পেতে পারে।

(সুরজিত কুমার সাহা)

উপ-পরিচালক

পরিচালকের পক্ষে

বাংলাদেশ আবহাওয়া অধিদপ্তর, ঢাকা-১২০৭।

Short Weather Description, Period: 22.02.2011 to 28.02.2011

Weather was mainly dry over the country during the period except Dhaka in Dhaka division and Ishurdi in Rajshahi division.

Maximum rainfall 1mm was recorded at Ishurdi in Rajshahi division, which was 85% below normal.

Minimum Rainfall 'trace' was recorded at Dhaka in Dhaka division, which was not measurable.

Highest maximum temperature was recorded in Dhaka Division 27.7-31.2°C Chittagong Division 28.0-33.7°C, Sylhet Division 28.2-32.7°C, Rajshahi Division 27.8-30.5°C, Rangpur Division 26.8-30.2°C Khulna Division 27.9-31.2°C and Barisal Division 29.0-31.2°C

Extreme maximum temperature was recorded at Madaripur in Dhaka Division 31.2°C, at Sitakunda in Chittagong Division 31.7°C, at Sylhet in Sylhet Division 32.7°C, at Bogra & Rajshahi in Rajshahi Division 30.5°C, at Dinajpur in Rangpur Division 30.2°C, at Jessore in Khulna 31.2°C and at Patuakhali in Barisal Division 31.2 °C

Lowest minimum temperature was recorded in Dhaka Division 12.0-19.6°C, Chittagong Division 13.0-20.8°C, Sylhet Division 11.2-16.7°C, Rajshahi Division 10.4-16.8 °C, Rangpur Division 12.5-17.0°C, Khulna Division 10.3-16.5°C and Barisal Division 13.0-16.7°C

Extreme minimum temperature was recorded at Madaripur in Dhaka Division 12.0°C, at Sitakunda in Chittagong Division 13.0°C, at Srimongal in Sylhet Division 11.2°C, at Ishurdi in Rajshahi Division 10.4°C, at Dinajpur in Rangpur division 12.5 °C, Chuadanga in Khulna Division 10.3°C and at Barisal in Barisal Division 13.0°C.

Rainfall analysis and average temperature:-

Name of the Divisions	Name of the Stations	Total Rainfall in (mm)	Normal Rainfall in (mm)	Deviation in %	Total Rainy days	Average Max Humidity in %	Average Min Humidity in %	Average Max. temp in °C	Average Normal Max. temp in °C	Average Min. temp in °C	Average Normal Min. temp in °C
Dhaka	Dhaka	Trace	7	***	1	74	23	29.5	29.5	17.6	17.3
	Mymensingh	0	7	-100	0	**	**	**	28.1	**	16.2
	Faridpur	0	4	-100	0	93	14	29.4	14.5	**	16.3
	Madaripur	0	10	-100	0	94	28	30.1	13.5	**	16.4
	Tangail	0	9	-100	0	94	31	29.0	28.6	13.7	16.0
Chittagong	Chittagong	0	1	-100	0	84	23	31.9	29.0	17.7	17.3
	Sitakunda	0	5	-100	0	96	18	32.2	29.7	14.9	16.2
	Rangamati	0	6	-100	0	**	**	**	30.1	**	16.6
	Cox'sBazar	0	6	-100	0	83	32	30.1	29.8	18.7	18.4
	Teknaf	0	7	-100	0	**	**	**	29.7	**	18.2
	Hatiya	0	5	-100	0	**	**	**	28.7	**	17.9
	Sandwip	0	7	-100	0	**	**	**	28.4	**	18.1
	Kutubdia	0	5	-100	0	92	39	28.7	28.3	18.1	18.5
	Feni	0	8	-100	0	**	**	**	29.4	**	17.0
	M.Court	0	7	-100	0	**	**	**	29.3	**	17.4
	Chandpur	0	4	-100	0	92	35	30.1	29.1	15.9	16.9
	Comilla	0	8	-100	0	95	32	29	28.7	15.2	16.7
Sylhet	Sylhet	0	11	-100	0	**	**	**	28.6	**	15.9
	Srimongal	0	14	-100	0	97	10	30	29.2	12.4	14.6
Rajshahi	Rajshahi	0	4	-100	0	96	15	29.4	29.4	12.4	14.6
	Bogra	0	4	-100	0	93	23	29.6	28.5	14.8	15.5
	Ishurdi	1	6	-83	1	97	11	29.2	29.1	12.1	14.1
Rangpur	Rangpur	0	3	-100	0	**	**	**	27.1	**	14.1
	Dinajpur	0	2	-100	0	95	28	28.4	27.6	14.2	14.1
Khulna	Khulna	0	7	-100	0	96	25	29.3	30.0	14.8	16.9
	Jessore	0	5	-100	0	**	**	**	30.5	**	16.2
	Chuadanga	0	5	-100	0	97	13	29	30.0	12.2	15.7
	Satkhira	0	9	-100	0	96	27	29.1	30.1	14.1	17.2
Barisal	Barisal	0	5	-100	0	97	28	30	29.7	14.1	16.6
	Bhola	0	8	-100	0	**	**	**	29.6	**	17.7
	Patuakhali	0	6	-100	0	100	33	30.2	29.8	14.9	17.9
	Khepupara	0	11	-100	0	97	17	30	29.7	15.0	18.3

N.B. Analyses contained in this bulletin are based on preliminary un-checked data.

** Data not received. *** Data not available.