



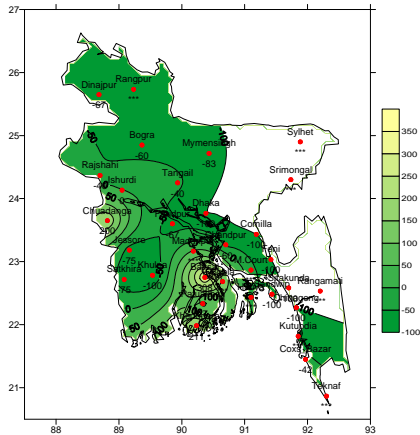
Government of the Peoples' Republic of Bangladesh
Bangladesh Meteorological Department
(Meteorological Headquarter)
Meteorological Complex, Agargaon, Dhaka-1207.

Agm-3 (2)/2010/ 42

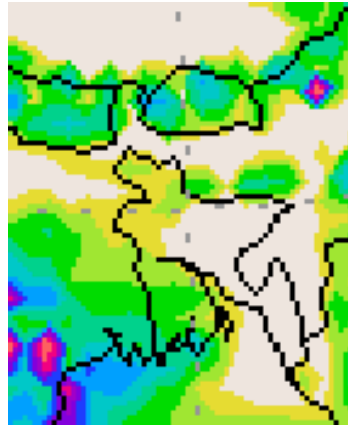
Issue date: 08-11-2010

Forecast for the period: 08.11.2010 to 14.11.2010

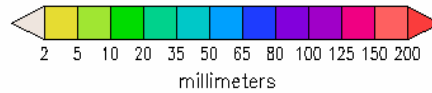
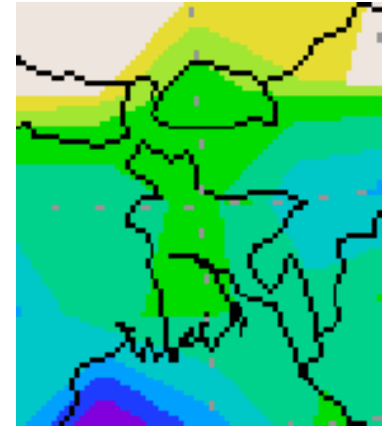
Rainfall Departure as a percentage of Normal
(01-11-2010 to 07-11-2010)



Accumulated Rainfall Forecast
(08-11-2010 to 14-11-2010)



Extended outlook for the next week
(15-11-2010 to 21-11-2010)



Highlights:

Free water loss during last week was averaged **3.36** mm per day.

Sunshine hour during last week was averaged **7.27** hours per day.

Advisory for the period from 08.11.2010 to 14.11.2010

Free water loss during the Period is expected to be between 2.50 to 3.50 mm per day.

Bright sunshine hour during the Period is expected to be between 7.00 to 8.00 hrs per day.

Weather:

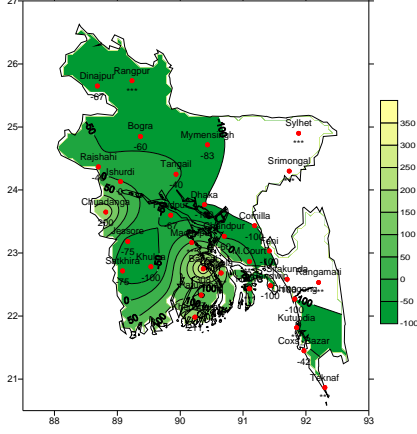
- The severe cyclonic storm "JAL" over West central Bay and adjoining Bay area weakened, moved West-Northwards, crossed South Andhra coast near to North of Chennai and now lies over South Andhra pradesh and adjoining North Tamilnadu as a land depression. It is likely to move in a west-northwesterly direction further inland and weaken gradually.
- Light (4-10mm) rain/drizzle accompanied by temporary gusty wind is likely to occur at one or two places over Khulna, Barisal, Rajshahi and Rangpur divisions and weather may remain mainly dry elsewhere over the country during this period.
- Weather of this week may remain favourable for application of fertilizer and aerial spray.
- Morning mist/haze is likely to occur with light fog at a few places over river basin of northern and southern part of the country during this period.
- Day and night temperature may fall over the country during this period.

(Md. Shameem Hassan Bhuiyan)
Meteorologist
For Director
Bangladesh Meteorological Department
Dhaka-1207.

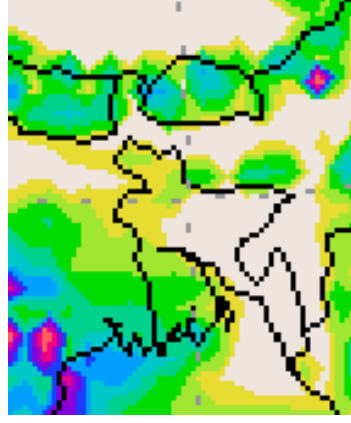
Bengali Version

Forecast for the period: 08.11.2010 to 14.11.2010

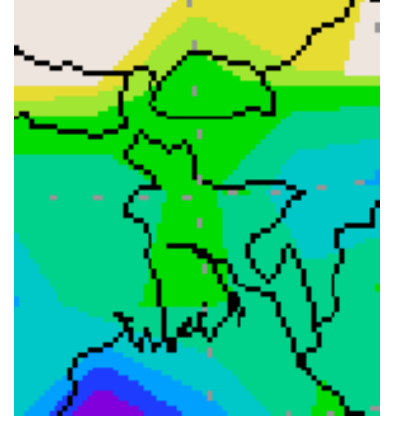
Rainfall Departure as a percentage of Normal
(01-11-2010 to 07-11-2010)



Accumulated Rainfall Forecast
(08-11-2010 to 14-11-2010)



Extended outlook for the next week
(15-11-2010 to 21-11-2010)



প্রধান বৈশিষ্ট্য সমূহঃ-

গত সপ্তাহে বাষ্পীভবনের দৈনিক গড় ৩.৩৬ মিঃমিঃ ছিল।
গত সপ্তাহে সূর্যকিরণ কালের দৈনিক গড় ৭.২৭ ঘন্টা ছিল।

পূর্বাভাসঃ- ০৮-১১-২০১০ খৃঃ থেকে ১৪-১১-২০১০ খৃঃ পর্যন্ত।

এ সময়ে বাষ্পীভবনের দৈনিক গড় মান মিঃমিঃ থেকে মিঃমিঃ থাকতে পারে।
এ সময়ে সূর্যকিরণকালের দৈনিক গড় মান ঘন্টা থেকে ঘন্টা থাকতে পারে।

আবহাওয়াঃ-

- পশ্চিম মধ্য বঙ্গোপসাগর ও তদসংলগ্ন এলাকায় একটি নিম্নচাপ অবস্থান করছে এবং এর বর্ধিতাংশটি উত্তর বঙ্গোপসাগরে রয়েছে।
- এ সপ্তাহে সারাদেশের দুই এক স্থানে অস্থায়ী দমকা হাওয়া সহ হালকা (৪-১০ মিঃমিঃ) থেকে মাঝারী (১০-২২ মিঃমিঃ) ধরনের বৃষ্টি/ বজ্র বৃষ্টির সম্ভাবনা রয়েছে।
- এ সপ্তাহের আবহাওয়া জমিতে সার প্রয়োগ ও উপর থেকে রাসায়নিক দ্রব্য ছিটানোর উপযোগী থাকতে পারে।
- এ সময়ে রাতের তাপমাত্রা প্রায় অপরিবর্তিত থাকতে পারে।

(মোঃ শামীম হাসান ভূঁইয়া)

আবহাওয়াবিদ

পরিচালকের পক্ষে

বাংলাদেশ আবহাওয়া অধিদপ্তর, ঢাকা-১২০৭।

Short Weather Description, Period 01.11.2010 to 07.11.2010

Light to heavy rainfall was recorded over the country except Dhaka in Dhaka division, Chittagong, Sitakunda, Feni, and Comilla in Chittagong division, Khulna in Khulna division.

Maximum rainfall 53 mm was recorded at Barisal in Barisal division which was 308% above normal.

Minimum rainfall 'Trace' was recorded at Madaripur in Dhaka division, M.court in Chittagong division; Sylhet, Srimongal in Sylhet division and Rangpur in Rangpur division which were not measurable.

Highest maximum temperature was recorded in Dhaka Division 25.4-33.6^oC, Chittagong Division 29.5-35.1^oC, Sylhet Division 27.7-33.4^oC, Rajshahi Division 25.4-34.2^oC, Rangpur Division 24.5-32.8^oC, Khulna Division 24.8-34.0^oC and Barisal Division 28.5-34.0^oC

Extreme maximum temperature was recorded at Tangail in Dhaka Division 33.6^oC, at Sitakunda in Chittagong Division 35.1^oC, at Sylhet in Sylhet Division 33.4^oC, at Bogra in Rajshahi Division 34.2^oC, at Dinajpur in Rangpur Division 32.8^oC, Jessore in Khulna Division 34.0^oC and at Patuakhali in Barisal Division 34.0^oC

Lowest minimum temperature was recorded in Dhaka Division 19.8-24.5^oC, Chittagong Division 21.7-25.5^oC, Sylhet Division 18.3-22.8^oC, Rajshahi Division 18.5-22.6^oC, Rangpur Division 18.7-22.0^oC, Khulna Division 18.4-25.0^oC and Barisal Division 21.5-24.2^oC

Extreme minimum temperature was recorded at Mymensingh in Dhaka Division 19.8^oC, at Feni in Chittagong Division 21.7^oC, at Srimongal in Sylhet Division 18.3^oC, at Rajshahi in Rajshahi Division 18.5^oC, at Dinajpur in Rangpur division 18.7^oC, Chuadanga in Khulna Division 18.4^oC and at Khepupara in Barisal Division 21.5^oC.

Rainfall analysis and average temperature: -

Name of the Divisions	Name of the Stations	Total Rainfall in (mm)	Normal Rainfall in (mm)	Deviation in %	Total Rainy days	Average Max Humidity in %	Average Min Humidity in %	Average Max. temp in °C	Average Normal Max. temp in °C	Average Min. temp in °C	Average Normal Min. temp in °C
Dhaka	Dhaka	0	9	-100	0	90	51	31.0	31.0	22.7	21.5
	Mymensingh	1	6	-83	2	97	58	30.8	30.7	21.0	20.3
	Faridpur	2	6	-67	2	96	47	30.7	30.6	22.0	21.6
	Madaripur	trace	9	***	1	95	62	30.8	31.1	22.2	21.0
	Tangail	3	5	-40	2	96	63	30.8	30.7	21.0	20.7
Chittagong	Chittagong	0	10	-100	0	98	45	32.6	31.1	23.4	22.2
	Sitakunda	0	10	-100	0	100	55	33.6	31.5	22.9	21.4
	Rangamati	**	14	***	**	**	**	**	30.7	**	21.8
	Cox'sBazar	11	19	-42	1	83	80	32.8	31.5	24.2	22.9
	Teknaf	**	16	***	**	**	**	**	31.2	**	22.9
	Hatiya	0	14	-100	0	99	60	32.4	30.3	23.5	22.2
	Sandwip	0	20	-100	0	96	59	32.7	30.6	22.7	22.2
	Kutubdia	**	21	***	**	93	63	32.2	30.8	24.0	22.6
	Feni	0	12	-100	0	**	**	**	30.7		20.8
	M.Court	trace	13	***	1	97	51	31.8	30.4	24.2	22.2
	Chandpur	2	5	-60	1	96	62	31.1	30.6	23.3	22.0
	Comilla	0	12	-100	0	95	58	31.6	30.8	22.7	20.8
Sylhet	Sylhet	trace	9	***	2	90	53	31.7	30.8	22.0	20.5
	Srimongal	trace	13	***	2	**	**	**	29.9	**	18.7
Rajshahi	Rajshahi	3	5	-40	2	98	50	30.0	30.7	19.9	20.0
	Bogra	2	5	-60	2	**	**	**	31.3	**	20.5
	Ishurdi	3	3	0	2	97	48	30.2	29.5	20.4	19.2
Rangpur	Rangpur	trace	3	***	2	94	56	29.5	30.2	20.3	18.8
	Dinajpur	1	3	-67	1	98	43	30.3	30.7	19.5	19.9
Khulna	Khulna	0	5	-100	0	98	56	30.4	31.1	22.1	21.6
	Jessore	1	4	-75	1	**	**	30.8	31.5	20.5	20.0
	Chuadanga	3	1	200	2	98	47	30.4	31.3	19.9	20.4
	Satkhira	1	4	-75	1	96	46	30.5	31.3	21.0	20.6
Barisal	Barisal	53	13	308	1	99	62	31.5	31.0	22.1	21.1
	Bhola	**	35	***		**	**	**	30.9	**	21.5
	Patuakhali	14	11	27	1	100	77	31.7	30.6	22.5	22.0
	Khepupara	28	9	211	2	98	54	31.4	30.5	22.6	22.0

N.B. Analyses contained in this bulletin are based on preliminary un-checked data.

** Data not received. *** Data not available.