



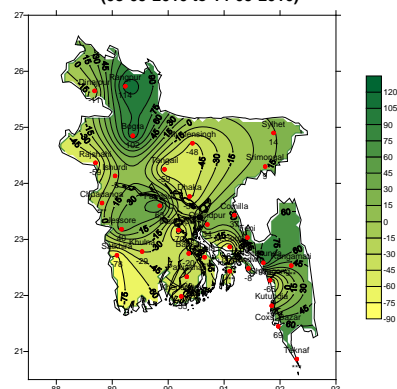
Government of the Peoples' Republic of Bangladesh
Bangladesh Meteorological Department
(Meteorological Headquarter)
Meteorological Complex, Agargaon, Dhaka-1207.

Agm-3 (2)/2010/ 35

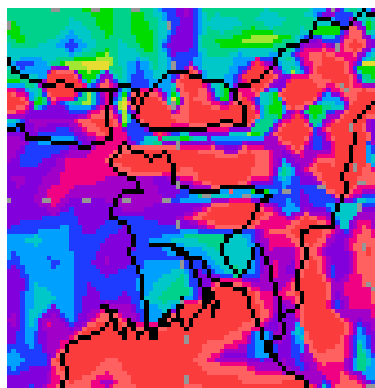
Issue date: 15-09-2010

Forecast for the period: 15.09.2010 to 21.09.2010

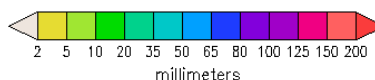
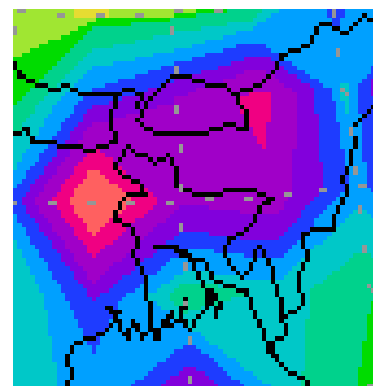
Rainfall Departure as a percentage of Normal
(08-09-2010 to 14-09-2010)



Accumulated Rainfall Forecast
(15-09-2010 to 21-09-2010)



Extended outlook
(22-09-2010 to 30-09-2010)



Highlights:

Free water loss during last week was averaged 2.84 mm per day.

Sunshine hour during last week was averaged 4.30 hours per day.

Advisory for the period from 15.09.2010 to 21.09..2010

Free water loss during the Period is expected to be between 3.0 mm to 4.0 mm per day.

Bright sunshine hour during the Period is expected to be between 4.25 to 5.25 hrs per day.

Weather:

- At present monsoon is fairly active over Bangladesh and moderate to strong elsewhere over North Bay.
- Light (4-10mm) to moderate (10-22mm) rain/thunder shower accompanied by temporary gusty/squally wind may occur at most places over Sylhet, Rangpur and Chittagong divisions and many places else where over the country with a chance of isolated moderately heavy (22-44 mm) to heavy (44-88 mm) falls at places over North and North-Eastern and Southern Part of the country during this period.
- Rainfall may be near normal over the country except Sylhet and Rangpur division where rainfall may be above normal.
- Slight fall in day and night temperature during the first half and slight rise in day and night temperature are expected over the country during the second half of this period.

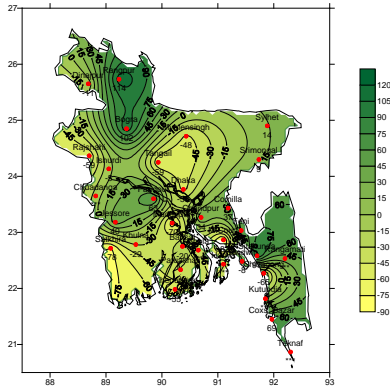
(Surajit Kumar Shaha)
Deputy Director
For Director

Bangladesh Meteorological Department
Dhaka-1207.

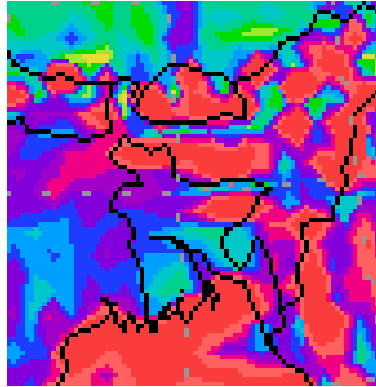
Bengali Version

Forecast for the period: 15.09.2010 to 21.09.2010

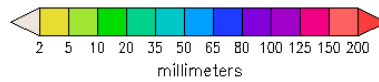
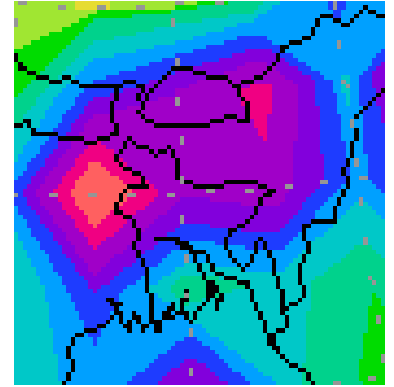
Rainfall Departure as a percentage of Normal
(08-09-2010 to 14-09-2010)



Accumulated Rainfall Forecast
(15-09-2010 to 21-09-2010)



Extended outlook
(22-09-2010 to 30-09-2010)



চাঁদে একে মগত-

MZ mBvtn ev@uxFe+bi ^^wbK Mo 2.84 wgtwgt wQj |
MZ mBvtn mh@Ki Y Kv+j i %wbK Mo 4.30 N>Uv wQj |

চৈফিম- 15-09-2010 Lt t _tK 21-09-2010 Lt chSf

G mg+q ev@uxFe+bi ^^wbK Mo gvb 3.00 wgtwgt t_tK 4.00 wgtwgt _vKtZ cv+i |
G mg+q mh@Ki Y Kv+j i ^^wbK Mo gvb 4.25 N>Uv t_tK 5.25 N>Uv _vKtZ cv+i |

Avenl qrt-

- eZ@v+eb evsj v+ t_ki Dci tgsngx evqyc@v+n tgvUvgyU m+uq Ges DEi et+vcmmM+ti gvSvix t_tK ku^ kuj x i tqtQ |
- G mBvtn wmtj U, iscj I P@EM@g wefv+Mi AwaKvsk ^v+eb Ges t_tki Ab^T A+ebK ^v+eb `gKv A_ev Stov nvl qvmm nuj Kv (4-10 wgtwgt) t_tK gvSvix (10-22 wgtwgt) ai+Yi ep@ / eR^ ep@ n+Z cv+i | tmB m+ _ t_tki DEi, DEi ce@Aj I `w+YvA+ti i `@GK^v+eb wew+@Bfv+te gvSvix ai+Yi fvix (22-44 wgtwgt) t_tK fvix (44-88 wgtwgt) el+Yi m+@ebv i tqtQ |
- G mg+q wmtj U, iscj wefvM e^ZiZ mvi+ t_k c@q ^vfw+eK ep@cvZ Ges H mKj ^v+eb ^vfw+e+Ki tPtq tenk ep@cvZ nI qvi m+@ebv i tqtQ |
- G mBvtni c@gv+ta@mvi+ t_k w b Ges i+Zi Zvcgv+tv mvgvb^ nwm tctZ cv+i mBvtni w@Zxqv+ta^w b I i+Zi Zvcgv+tv mvgvb^ ep+ tctZ cv+i |

(mjwRZ Kgyi m+nv)
Dc-cwi Pvj K
cwi Pvj t_ki ct+q
evsj v+ k Avenl qv Awa^ Bi, XiKv-1207 |

Short Weather Description, Period 08.09.2010 to 14.09.2010

Under the influence of south west monsoon light to moderately heavy rainfall was recorded over the country during the period.

Maximum rainfall 209 mm was recorded at Sitakunda in Chittagong Division, which was 97% above normal

Minimum rainfall 16 mm was recorded at Satkhira in Khulna Division, which was 78% below normal.

Highest maximum temperature was recorded in Dhaka Division 30.0-34.9°C, Chittagong Division 28.0-34.5°C, Sylhet Division 27.9-35.5°C, Rajshahi Division 29.0-35.2°C, Rangpur Division 25.2-33.6°C, Khulna Division 30.5-35.0°C and Barisal Division 27.6-34.5°C.

Extreme maximum temperature was recorded at Tangail in Dhaka Division 34.9°C, at Comilla in Chittagong Division 34.5°C, at Sylhet in Sylhet Division 35.5°C, at Rajshahi in Rajshahi Division 35.2°C, at Rangpur in Rangpur Division 33.6°C, Chuadanga in Khulna Division 35.0°C and at Patuakhali in Barisal Division 34.5°C.

Lowest minimum temperature was recorded in Dhaka Division 25.0-28.3°C, Chittagong Division 24.0-27.5°C, Sylhet Division 24.5-26.7°C, Rajshahi Division 23.7-27.6°C, Rangpur Division 23.8-27.6°C, Khulna Division 25.0-27.5°C and Barisal Division 25.0-28.0°C.

Extreme minimum temperature was recorded at Tangail in Dhaka Division 25.0°C, at Hatiya in Chittagong Division 24.0°C, at Sylhet in Sylhet Division 24.5°C, at Bogra in Rajshahi Division 23.7°C, at Rangpur in Rangpur Division 23.8°C, Jessore in Khulna Division 25.0°C and at Khepupara in Barisal Division 25.0°C.

Rainfall analysis and average temperature: -

Name of the Divisions	Name of the Stations	Total Rainfall in (mm)	Normal Rainfall in (mm)	Deviation in %	Total Rainy days	Average Max Humidity in %	Average Min Humidity in %	Average Max. temp in °C	Average Normal Max. temp in °C	Average Min. temp in °C	Average Normal Min. temp in °C
Dhaka	Dhaka	40	80	-50	6	91	80	33.1	31.8	27.2	25.9
	Mymensingh	40	77	-48	6	96	90	32.2	31.0	26.8	25.2
	Faridpur	103	63	63	6	98	87	33.1	31.5	26.3	25.8
	Madaripur	21	71	-70	7	95	88	32.1	32.0	27.1	25.4
	Tangail	29	71	-59	4	96	87	33.2	31.7	26.7	25.4
Chittagong	Chittagong	39	113	-65	6	96	64	32.3	31.8	26.0	25.1
	Sitakunda	209	106	97	7	90	73	32.2	31.6	25.7	25.2
	Rangamati	**	79	***	**	**	**	**	31.8	**	24.5
	Cox'sBazar	152	90	69	7	**	**	**	31.3	**	25.1
	Teknaf	**	105	***	**	**	**	**	30.6	**	24.7
	Hatiya	**	107	***	**	**	**	**	30.6	**	25.5
	Sandwip	105	114	-8	6	97	90	31.4	31.1	25.7	25.3
	Kutubdia	**	72	***	**	**	**	**	31.0	**	25.5
	Feni	135	89	52	5	100	88	31.0	31.3	25.9	24.8
	M.Court	19	103	-82	3	**	**	**	31.2	**	25.5
	Chandpur	90	67	34	5	97	87	32.5	31.6	26.7	25.8
	Comilla	96	70	37	6	96	88	33.0	31.6	26.2	25.3
Sylhet	Sylhet	141	124	14	6	98	87	31.5	31.6	25.5	24.8
	Srimongal	71	65	9	6	98	90	32.2	32.1	25.7	24.1
Rajshahi	Rajshahi	24	58	-59	6	**	**	**	32.2	**	25.3
	Bogra	125	62	102	6	98	87	32.6	32.1	26.2	25.9
	Ishurdi	53	56	-5	5	98	89	32.8	32.2	26.2	25.7
Rangpur	Rangpur	148	69	114	3	97	88	31.5	31.4	25.5	25.1
	Dinajpur	64	72	-11	5	97	87	31.8	31.7	26.0	25.5
Khulna	Khulna	48	68	-29	6	98	87	32.9	31.9	26.7	25.8
	Jessore	81	58	40	5	**	**	**	32.4	**	25.5
	Chuadanga	**	81	***	**	**	**	**	32.6	**	25.7
	Satkhira	16	73	-78	2	**	**	**	31.9	**	25.6
Barisal	Barisal	55	69	-20	6	99	89	32.0	31.2	26.9	25.4
	Bhola	**	78	***	**	**	**	**	31.2	**	25.8
	Patuakhali	71	101	-30	6	**	**	**	31.2	**	25.8
	Khepupara	46	102	-55	5	98	87	31.7	30.8	26.9	25.7

N.B. Analyses contained in this bulletin are based on preliminary un-checked data.

** Data not received. *** Data not available.