



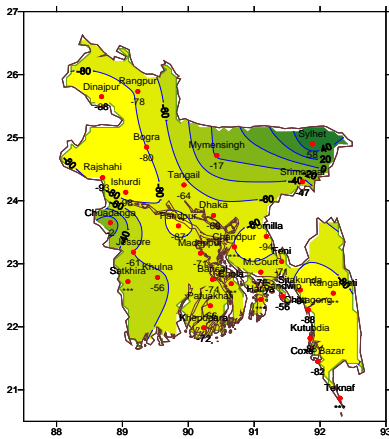
**Government of the Peoples' Republic of Bangladesh  
Bangladesh Meteorological Department  
(Meteorological Headquarter)  
Meteorological Complex, Agargaon, Dhaka-1207.**

Agm-3 (2)/2010/ 34

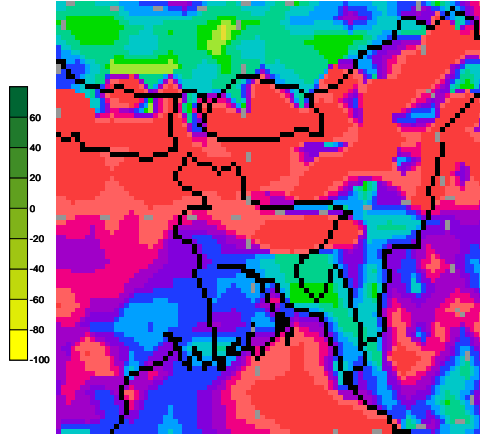
Issue date: 08-09-2010

**Forecast for the period: 08.09.2010 to 14.09.2010**

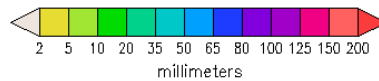
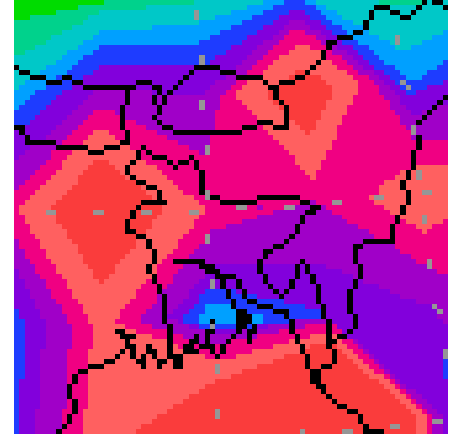
Rainfall Departure as a percentage of Normal  
(01-09-2010 to 07-09-2010)



Accumulated Rainfall Forecast  
(08-09-2010 to 14-09-2010)



Extended outlook  
(15-09-2010 to 21-09-2010)



Highlights:

Free water loss during last week was averaged 3.57 mm per day.

Sunshine hour during last week was averaged 6.22 hours per day.

Advisory for the period from 08.09.2010 to 14.09..2010

Free water loss during the Period is expected to be between 3.0 to 4.0 mm per day.

Bright sunshine hour during the Period is expected to be between 4.50 to 5.50 hrs per day.

Weather:

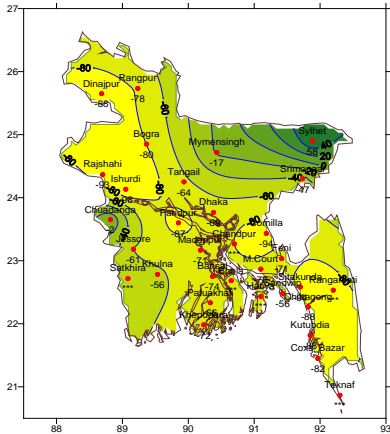
- At present monsoon is fairly active over Bangladesh and moderate to strong elsewhere over North Bay.
- Light (4-10mm) to moderate (10-22mm) rain/thunder shower accompanied by temporary gusty/squally wind may occur at most places over Sylhet, Rangpur and Dhaka divisions and many places else where over the country with a chance of isolated moderately heavy (22-44 mm) to heavy (44-88 mm) falls at places over North and North-Eastern and Southern Part of the country during this period.
- Rainfall may be near normal over the country except Sylhet, Rangpur and Northern part of the Dhaka division where rainfall may be above normal.
- Slight fall in day and night temperature are expected over the country during this period.

(Md. Shameem Hassan Bhuiyan)  
Meteorologist  
For Director  
Bangladesh Meteorological Department  
Dhaka-1207.

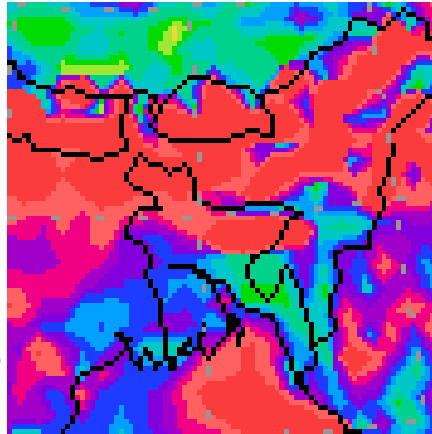
# Bengali Version

## Forecast for the period: 08.09.2010 to 14.09.2010

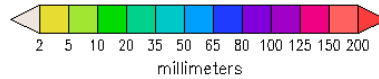
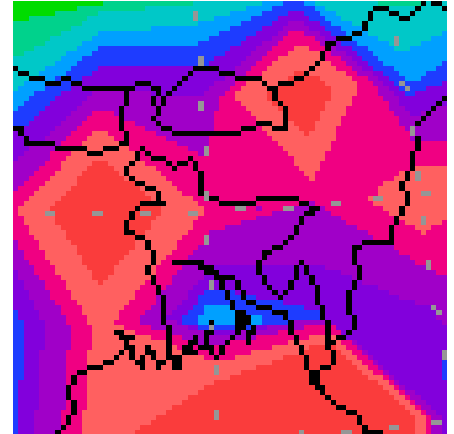
Rainfall Departure as a percentage of Normal  
(01-09-2010 to 07-09-2010)



Accumulated Rainfall Forecast  
(08-09-2010 to 14-09-2010)



Extended outlook  
(15-09-2010 to 21-09-2010)



### চাঁদ 'এক' মগ্ন-

MZ মব্রন এর উৎফেতি বর্ষক মো 3.57 মগ্নত মজ |  
MZ মব্রন মন্বিকি Y Kvtj i % বর্ষক মো 6.22 নুব মজ |

### চাঁদ- 08-09-2010 Lt t tK 14-09-2010 Lt chst

G মগ্নত এর উৎফেতি বর্ষক মো গুব 3.0 মগ্নত t tK 4.0 মগ্নত vKtZ cvti |  
G মগ্নত মন্বিকি Y Kvtj i বর্ষক মো গুব 4.50 নুব t tK 5.50 নুব vKtZ cvti |

### আবল গ্ন-

- eZgvtb evsj vt tki Dci tgsngx evqycen tgvUgyU mupq Ges DEi etvcmvMti gvSvix t tK kvkuj x itqtQ |
- G মব্রন মন্বি U, iscj I XvKv wefvMi AwaKvsk vt Ges t tki AbT AtbK vt gKv A\_ev Stov nvl qmn nvj Kv (4-10 মগ্নত) t tK gvSvix (10-22 মগ্নত) aiYi ep / eR ep ntZ cvti | tmB mv t tki DEi, DEi ceBk I wYvAtj i GK vt wevBfvt gvSvix aiYi fvix (22-44 মগ্নত) t tK fvix (44-88 মগ্নত) elYi mtebv itqtQ |
- G মগ্নত মন্বি U, iscj I XvKv wefvMi DEivsk eZxZ mvi vt t k cDq vfwek epocvZ Ges H mKj vt vfwetki tPtq tek epocvZ nqv mtebv itqtQ |
- mvi vt t k w b Ges ivZi ZvcgvT mvgv nwm tctZ cvti |

(tgv kvvg nvmv fBqv)

আবল কমে

চাঁদ পূর্বাঞ্চল

এসজি ক আবল ক আবল বি, খি-1207 |

### **Short Weather Description, Period 01.09.2010 to 07.09.2010**

Under the influence of south west monsoon light to moderately heavy rainfall was recorded over the country during the period.

Maximum rainfall 125 mm was recorded at Sylhet in Sylhet Division, which was 58% above normal

Minimum rainfall 1 mm was recorded at Ishurdi in Rajshahi Division, which was 98% below normal.

Highest maximum temperature was recorded in Dhaka Division 31.0-34.6°C, Chittagong Division 31.7-36.0°C, Sylhet Division 31.4-33.5°C, Rajshahi Division 33.3-36.0°C, Rangpur Division 31.7-33.8°C, Khulna Division 32.2-36.0°C and Barisal Division 32.0-35.0°C.

Extreme maximum temperature was recorded at Tangail in Dhaka Division 33.6°C, at Comilla in Chittagong Division 36.0°C, at Sylhet in Sylhet Division 34.5°C, at Rajshahi in Rajshahi Division 36.0°C, at Dinajpur and Rangpur in Rangpur Division 33.8°C, Chudanga in Khulna Division 36.0°C and at Patuakhali in Barisal Division 35.0°C.

Lowest minimum temperature was recorded in Dhaka Division 25.8-28.3°C, Chittagong Division 24.5-28.2°C, Sylhet Division 24.6-26.9°C, Rajshahi Division 26.3-27.8°C, Rangpur Division 25.2-27.7°C, Khulna Division 26.3-27.5°C and Barisal Division 25.5-27.7°C.

Extreme minimum temperature was recorded at Madaripur in Dhaka Division 25.8°C, at Rangamati in Chittagong Division 24.5°C, at Sylhet in Sylhet Division 24.6°C, at Ishurdi in Rajshahi Division 26.3°C, at Rangpur in Rangpur division 25.2°C, Chudanga in Khulna Division 26.3°C and at Khepupara in Barisal Division 25.5°C.

### **Rainfall analysis and average temperature: -**

Name of the Divisions	Name of the Stations	Total Rainfall in (mm)	Normal Rainfall in (mm)	Deviation in %	Total Rainy days	Average Max Humidity in %	Average Min Humidity in %	Average Max. temp in °C	Average Normal Max. temp in °C	Average Min. temp in °C	Average Normal Min. temp in °C
Dhaka	Dhaka	19	62	-69	5	90	76	33.1	31.9	27.3	26.2
	Mymensingh	52	63	-17	5	95	75	31.8	31.2	26.9	25.4
	Faridpur	7	53	-87	4	97	63	33.1	31.8	26.9	26.2
	Madaripur	17	59	-71	4	95	68	33.4	31.7	26.7	25.2
	Tangail	25	70	-64	2	86	70	33.3	32.0	26.5	25.7
Chittagong	Chittagong	7	59	-88	3	93	58	33.6	31.4	26.4	25.2
	Sitakunda	6	97	-94	3	97	63	33.3	31.2	26.0	25.3
	Rangamati	**	74	***	**	**	**	**	31.5	**	24.6
	Cox'sBazar	22	124	-82	6	88	79	32.9	30.8	25.7	25.1
	Teknaf	**	146	***	**	**	**	**	30.5	**	24.9
	Hatiya	**	122	***	**	**	**	**	30.6	**	25.4
	Sandwip	51	117	-56	6	96	71	33.8	30.6	26.1	25.3
	Kutubdia	12	96	-88	4	96	63	32.5	30.7	26.6	25.4
	Feni	30	103	-71	5	**	**	**	31.1	**	24.9
	M.Court	29	120	-76	4	97	60	33.3	31.0	26.8	25.5
	Chandpur	**	60	***	**	**	**	**	31.6	**	25.9
	Comilla	4	63	-94	3	**	**	**	31.7	**	25.4
Sylhet	Sylhet	217	137	58	6	96	69	33.2	31.7	25.8	24.9
	Srimongal	39	73	-47	3	97	59	32.2	32.2	25.8	24.4
Rajshahi	Rajshahi	4	58	-93	2	**	**	**	32.4	**	25.5
	Bogra	13	64	-80	2	96	83	34	32.1	27.2	25.9
	Ishurdi	1	54	-98	1	97	59	34.3	32.4	26.6	25.9
Rangpur	Rangpur	16	74	-78	1	95	67	33.1	31.5	26.7	25.4
	Dinajpur	7	59	-88	3	96	73	33.3	31.8	26.8	25.7
Khulna	Khulna	22	50	-56	5	97	83	34.1	32.3	27.1	26.1
	Jessore	20	51	-61	5	**	**	**	32.7	**	25.8
	Chuadanga	57	58	-2	6	96	73	32.7	33.0	26.7	25.9
	Satkhira	**	55	***		**	**	**	32.2	**	26.1
Barisal	Barisal	17	66	-74	7	98	72	33.0	31.3	26.7	25.6
	Bhola	**	83	***		**	**	**	31.1	**	25.8
	Patuakhali	30	87	-66	5	**	**	**	31.3	**	25.8
	Khepupara	31	112	-72	3	97	67	32.7	30.8	27.1	25.8

N.B. Analyses contained in this bulletin are based on preliminary un-checked data.

\*\* Data not received. \*\*\* Data not available.