



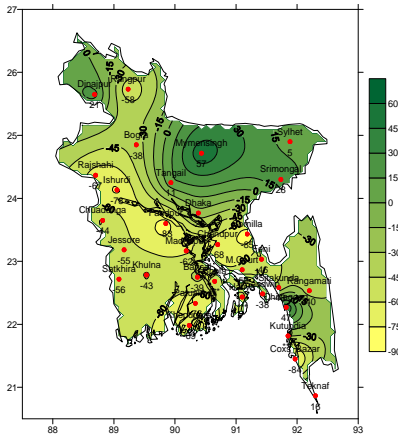
Government of the Peoples' Republic of Bangladesh
Bangladesh Meteorological Department
(Meteorological Headquarter)
Meteorological Complex, Agargaon, Dhaka-1207.

Agm-3 (2)/2010/ 33

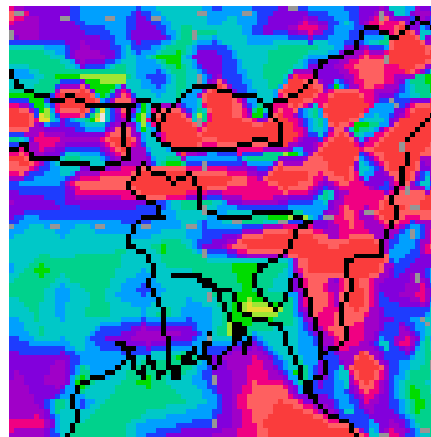
Issue date: 02-09-2010

Forecast for the period: 01.09.2010 to 07.09.2010

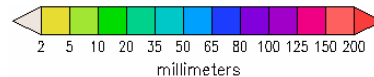
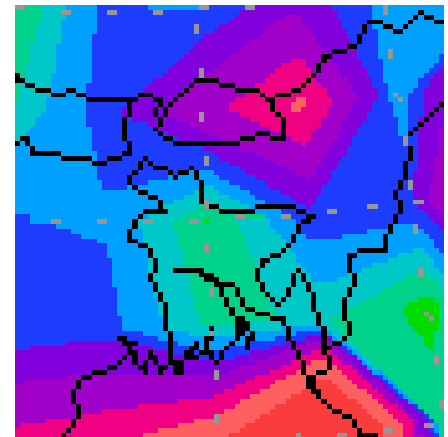
Rainfall Departure as a percentage of Normal
(22-08-2010 to 31-08-2010)



Accumulated Rainfall Forecast
(01-09-2010 to 07-09-2010)



Extended outlook
(08-09-2010 to 15-09-2010)



Highlights:

Free water loss during last week was averaged 3.17 mm per day.
Sunshine hour during last week was averaged 4.72 hours per day.

Advisory for the period from 01.09.2010 to 07.09..2010

Free water loss during the Period is expected to be between 3.25 mm to 4.25 mm per day.
Bright sunshine hour during the Period is expected to be between 4.75 to 5.75 hrs per day.

Weather:

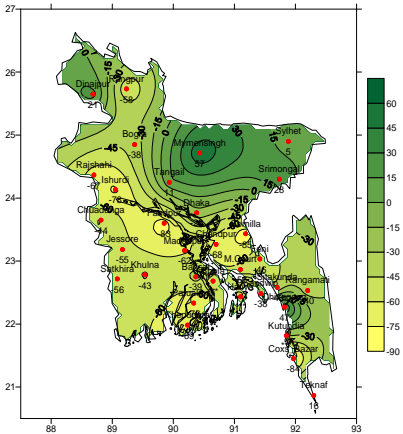
- At present monsoon is less active over Bangladesh and moderate else over North Bay.
- Light (4-10mm) to moderate (10-22mm) rain/thunder shower accompanied by temporary gusty/squally wind may occur at many places over Sylhet, Rangpur and Khulna divisions and few places else where over the country with a chance of isolated moderately heavy (22-44 mm) to heavy (44-88 mm) falls at places over North and North-Eastern and Southern Part of the country during this period.
- Rainfall may be bellow normal over the country except Sylhet and Rangpur divisions where rainfall may be above normal.
- Supplementary irrigation may required for Aman crop of Barind area during this period.
- Slight rise in day and night temperature are expected over the country during this period.

(Surajit Kumar Saha)
Deputy Director
For Director
Phone: 8130305 (O)

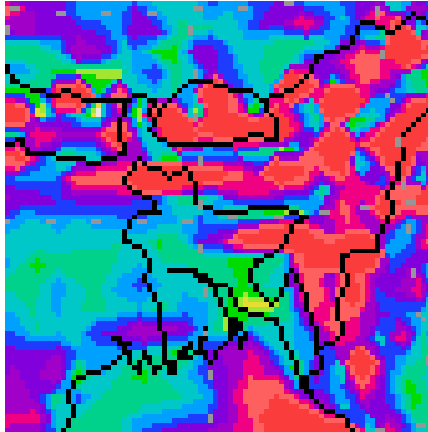
Bengali Version

Forecast for the period: 01.09.2010 to 07.09.2010

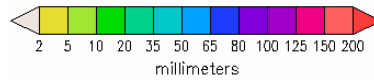
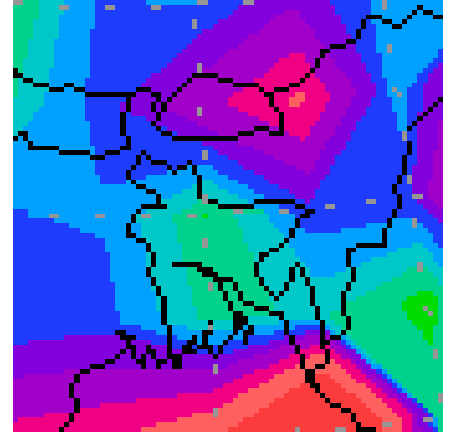
Rainfall Departure as a percentage of Normal
(22-08-2010 to 31-08-2010)



Accumulated Rainfall Forecast
(01-09-2010 to 07-09-2010)



Extended outlook
(08-09-2010 to 15-09-2010)



চাঁদ বঁকো মগ্ন-

MZ মব্রন এবঁরফেভি ৳ বঁক মো 3.17 ব্গত্বত বঁজ |
MZ মব্রন মঁকি Y কবঁজ i ৳ বঁক মো 4.72 নঁুব বঁজ |

চেঁফঁম- 01-09-2010 লঁ তঁ ক 07-09-2010 লঁ চেঁসঁ

G ম্গত্ব এবঁরফেভি ৳ বঁক মো বঁব 3.25 ব্গত্বত তঁ ক 4.25 ব্গত্বত ৳ কঁত্ব চেঁবি |
G ম্গত্ব মঁকি Y কবঁজ i ৳ বঁক মো বঁব 4.75 নঁুব তঁ ক 5.75 নঁুব ৳ কঁত্ব চেঁবি |

আবঁল ক্বত-

- এবঁরভ এবঁস্জ বঁ কঁি ডঁি ত্গঁম্গ এবঁগ্চেঁবঁন K্গ মঁমঁুর্ক Ges ডঁেি এবঁবঁবঁমঁেি গ্বসঁবঁ i তঁতঁQ |
- G মব্রন বঁমঁেঁ U, i স্চঁ i L্জ বঁ বঁেঁবঁমঁি A তঁব K ৳ বঁব Ges তঁ কঁি Ab ৳ ৳ K Q ৳ K Q ৳ বঁব ৳ গ K ৳ A ৳ ev S তঁব নঁব q m n n ৳ K ৳ (4-10 ব্গত্বত) তঁ কঁ গ্বসঁবঁ (10-22 ব্গত্বত) অঁতঁবি এবঁ / e R ৳ এবঁ নঁত্ব চেঁবি | তঁম B মঁব ৳ তঁ কঁি ডঁেি, ডঁেি চেঁস্ক i ৳ ৳ Y ৳ ৳ t ৳ i ৳ ৳ G K ৳ বঁব ৳ ৳ B f ৳ ৳ g ৳ S ৳ b ৳ i ৳ t ৳ i f ৳ i x (22-44 ব্গত্বত) তঁ কঁ f ৳ i x (44-88 ব্গত্বত) e l ৳ Y i m ৳ ৳ e ৳ b ৳ i ৳ t ৳ i Q |
- G ম্গত্ব বঁমঁেঁ U Ges i স্চঁ e ৳ Z ৳ Z m ৳ i ৳ t ৳ i এবঁ ৳ c ৳ v ৳ ৳ f ৳ ৳ ৳ e ৳ t ৳ K i ৳ t ৳ t ৳ K ৳ n l q ৳ i m ৳ ৳ e ৳ b ৳ i ৳ t ৳ i Q |
- এবঁ ৳ ৳ G ৳ j ৳ K ৳ v ৳ K ৳ v ৳ A ৳ v ৳ b ৳ k ৳ t ৳ i ৳ m ৳ ৳ ৳ t ৳ K ৳ t ৳ m ৳ P i ৳ c ৳ q ৳ v ৳ R ৳ b ৳ n ৳ t ৳ Z ৳ c ৳ v ৳ i |
- m ৳ i ৳ t ৳ i ৳ k ৳ ৳ b ৳ Ges i ৳ t ৳ Z i ৳ Z ৳ v ৳ c ৳ g ৳ ৳ ৳ v ৳ m ৳ v ৳ b ৳ ৳ এবঁ ৳ t ৳ c ৳ t ৳ Z ৳ c ৳ v ৳ i |

(মঁ ৳ R Z K ৳ g ৳ v i m ৳ v ৳)
D C - c ৳ i P ৳ j K
c ৳ i P ৳ j ৳ K i ৳ c ৳ t ৳ i
এবঁস্জ বঁ ক ৳ A ৳ v ৳ n l q ৳ v ৳ A ৳ ৳ B i , X ৳ v ৳ -1207 |

Short Weather Description, Period 22.08.2010 to 31.08.2010

Under the influence of south west monsoon light to very heavy rainfall was recorded over the country during the period.

Maximum rainfall 302 mm was recorded at Teknaf in Chittagong Division, which was 16% above normal

Minimum rainfall 14 mm was recorded at Faridpur in Dhaka Division, which was 86% below normal.

Highest maximum temperature was recorded in Dhaka Division 33.0-35.2°C, Chittagong Division 33.3-35.6°C, Sylhet Division 30.2-35.3°C, Rajshahi Division 30.0-35.4°C, Rangpur Division 29.0-33.7°C, Khulna Division 32.0-35.4°C and Barisal Division 30.6-35.5°C.

Extreme maximum temperature was recorded at Madaripur in Dhaka Division 35.2°C, at Comilla in Chittagong Division 35.6°C, at Sylhet in Sylhet Division 35.3°C, at Rajshahi and Ishurdi in Rajshahi Division 35.4°C, at Rangpur in Rangpur Division 33.7 at Jessore in Khulna Division 35.4°C and at Barisal in Barisal Division 35.5°C.

Lowest minimum temperature was recorded in Dhaka Division 25.0-27.8°C, Chittagong Division 25.0-28.0°C, Sylhet Division 24.0-26.5°C, Rajshahi Division 24.6-28.0°C, Rangpur Division 25.0-27.3°C, Khulna Division 26.0-27.8°C and Barisal Division 25.5-28.0°C.

Extreme minimum temperature was recorded at Dhaka in Dhaka Division 25.0°C, at M.Court in Chittagong Division 25.0°C, at Sylhet in Sylhet Division 24.0°C, at Ishurdi in Rajshahi Division 24.6°C, at Rangpur in Rangpur Division 25.0, at Jessor, Chuadanga, Satkhira in Khulna Division 26.0°C and at Khepupara in Barisal Division 25.5°C.

Rainfall analysis and average temperature: -

Name of the Divisions	Name of the Stations	Total Rainfall in (mm)	Normal Rainfall in (mm)	Deviation in %	Total Rainy days	Average Max Humidity in %	Average Min Humidity in %	Average Max. temp in °C	Average Normal Max. temp in °C	Average Min. temp in °C	Average Normal Min. temp in °C
Dhaka	Dhaka	71	89	-20	6	91	66	33.0	32.1	27.0	26.4
	Mymensingh	168	107	57	9	95	73	32.0	31.5	26.7	25.7
	Faridpur	14	83	-83	6	97	65	33.1	31.8	27.0	26.3
	Madaripur	40	106	-62	5	95	70	33.8	31.8	26.7	25.2
	Tangail	92	83	11	8	96	69	33.3	32.3	26.5	25.9
Chittagong	Chittagong	185	126	47	10			31.8	31.4	25.7	25.2
	Sitakunda	112	198	-43	9	100	65	32.7	31.2	25.7	25.4
	Rangamati	81	135	-40	10	98	61	32.8	31.7	25.3	24.8
	Cox'sBazar	30	182	-84	9	92	78	32.3	30.8	25.3	25.3
	Teknaf	302	261	16	3	**	**	**	30.4	**	25.1
	Hatiya	**	163	***		**	**	**	30.5	**	25.5
	Sandwip	127	204	-38	9	96	73	32.0	30.6	25.8	25.6
	Kutubdia	**	152	***		**	**	**	30.8	**	25.6
	Feni	82	152	-46	6	**	**	**	31.2	**	25.2
	M.Court	77	174	-56	7	97	62	33.2	31.2	26.6	25.7
	Chandpur	31	97	-68	6	**	**	**	31.8	**	26.1
	Comilla	15	103	-85	4	95	67	33.8	31.6	26.5	25.6
Sylhet	Sylhet	192	182	5	10	96	74	32.9	31.9	25.8	25.2
	Srimongal	119	93	28	10	98	64	33.1	32.2	25.2	24.5
Rajshahi	Rajshahi	29	89	-67	1	**	**	**	32.6	**	25.7
	Bogra	56	91	-38	6	96	63	32.7	32.4	26.9	26.3
	Ishurdi	87	72	21	3	100	60	36.6	32.5	26.3	26.1
Rangpur	Rangpur	25	113	-78	6	**	**	**	31.6	**	25.7
	Dinajpur	52	125	-58	4	98	64	31.9	32.0	26.5	25.9
Khulna	Khulna	44	77	-43	3	96	61	33.5	32.3	27.2	26.4
	Jessore	33	74	-55	6	**	**	**	32.7	**	26.0
	Chuadanga	34	61	-44	3	99	59	34.3	33.2	26.6	26.2
	Satkhira	39	88	-56	5	98	58	33.5	32.3	27.1	26.2
Barisal	Barisal	63	103	-39	7	97	72	33.0	31.5	26.9	25.8
	Bhola	**	125	***		**	**	**	31.3	**	26.1
	Patuakhali	32	136	-76	8	**	**	**	31.4	**	26.1
	Khepupara	44	140	-69	7	85	98	33.6	31.0	26.8	26.0

N.B. Analyses contained in this bulletin are based on preliminary un-checked data.

** Data not received. *** Data not available.