

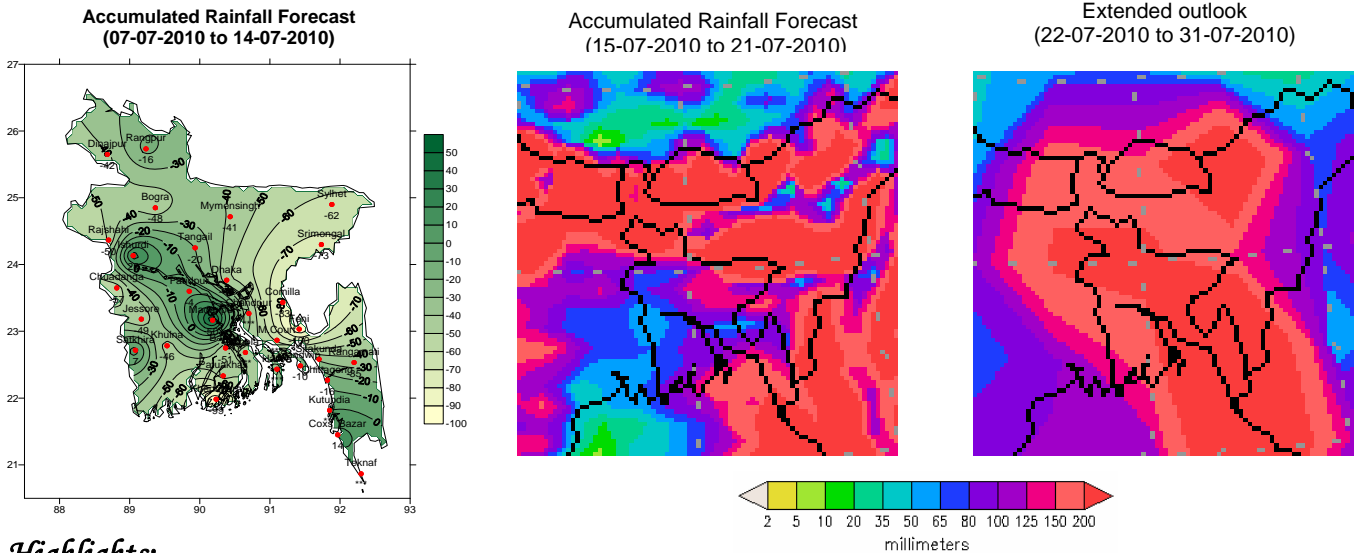


Government of the Peoples' Republic of Bangladesh  
Bangladesh Meteorological Department  
(Meteorological Headquarter)  
Meteorological Complex, Agargaon, Dhaka-1207.

Agm-3 (2)/2010/ 27

Issue date: 18-07-2010

**Forecast for the period: 15.07.2010 to 21.07.2010**



**Highlights:**

Free water loss during last week was averaged 3.72 mm per day.  
Sunshine hour during last week was averaged 4.49 hours per day.

**Advisory for the period from 15.07.2010 to 21.07..2010**

Free water loss during the Period is expected to be between 3.50 mm to 4.50 mm per day.  
Bright sunshine hour during the Period is expected to be between 4.75 to 5.75 hrs per day.

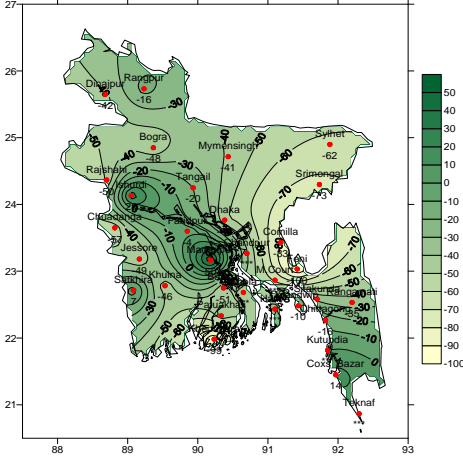
**Weather:**

- Monsoon axis runs through Rajstan, Uttar Pradesh, Madhya Pradesh, Bihar West Bengal to Assam across central part of Bangladesh. One of its associated troughs extends to North-West Bay. Monsoon is less active over Bangladesh and weak elsewhere over North Bay.
- Light to moderate rain/thunder shower accompanied by temporary gusty/squally wind may occur at many places over Rangpur, Sylhet, Dhaka and Chittagong divisions and few places over Barisal, Khulna and Rajshahi divisions with a chance of heavy to very heavy falls at places over North and North-Eastern Part of the country with adjoining Nepal and Jalpaiguri regions of India during the end of this period.
- Slight rise in day and night temperature are expected over the country during the period.

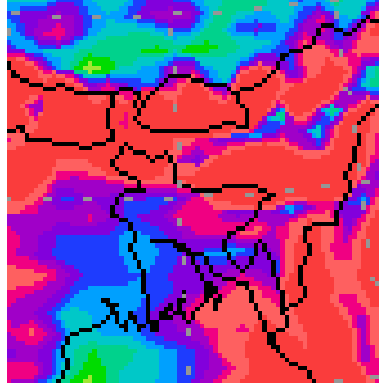
(Md. Shameem Hassan Bhuiyan)  
Meteorologist  
For Director  
Bangladesh Meteorological Department  
Dhaka-1207.

**Forecast for the period: 15.07.2010 to 21.07.2010**

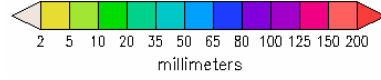
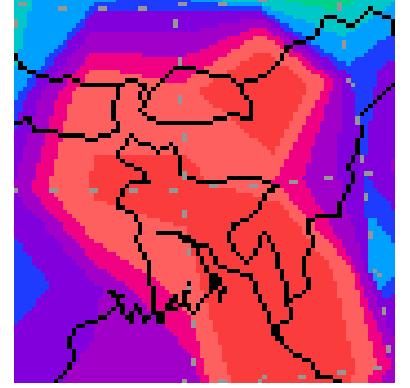
**Accumulated Rainfall Forecast  
(07-07-2010 to 14-07-2010)**



**Accumulated Rainfall Forecast  
(15-07-2010 to 21-07-2010)**



**Extended outlook  
(22-07-2010 to 30-07-2010)**



**প্রধান বৈশিষ্ট্য সমূহঃ-**

গত সপ্তাহে বাষ্পীভবনের দৈনিক গড় ৩.৭২ মিঃমিঃ ছিল।  
গত সপ্তাহে সূর্যকিরণ কালের দৈনিক গড় ৪.৪৯ ঘন্টা ছিল।

**পূর্বাভাসঃ- ১৫-০৭-২০১০ খৃঃ থেকে ২১-০৭-২০১০ খৃঃ পর্যন্ত।**

এ সময়ে বাষ্পীভবনের দৈনিক গড় মান ৩.৫০ মিঃমিঃ থেকে ৪.৫০ মিঃমিঃ থাকতে পারে।  
এ সময়ে সূর্যকিরণকালের দৈনিক গড় মান ৪.৭৫ ঘন্টা থেকে ৫.৭৫ ঘন্টা থাকতে পারে।

**আবহাওয়াঃ-**

- বর্তমানে মৌসুমী অক্ষ বাংলাদেশের মধ্যাঞ্চল হয়ে রাজস্থান, উত্তর প্রদেশ, মধ্যপ্রদেশ, বিহার, পশ্চিম বঙ্গ ও আসাম পর্যন্ত বিস্তৃত রয়েছে। এর একটি বর্ষিতাংশ উত্তর-পশ্চিম বঙ্গোপসাগর পর্যন্ত বিস্তৃত রয়েছে। বর্তমানে মৌসুমী বায়ু প্রবাহ বাংলাদেশে কম সক্রিয় এবং উত্তর বঙ্গোপসাগরে দুর্বল রয়েছে।
- এ সপ্তাহে রংপুর, সিলেট, ঢাকা ও চট্টগাম বিভাগের অনেকস্থানে এবং বরিশাল, খুলনা ও রাজশাহী বিভাগের কিছু কিছু স্থানে দমকা অথবা ঝড়ো হাওয়াসহ হালকা (৪-১০ মিঃমিঃ) থেকে মাঝারী (১০-২২ মিঃমিঃ) ধরণের বৃষ্টি / বজ্র বৃষ্টি হতে পারে। সেই সাথে দেশের উত্তর ও উত্তর-পূর্বাঞ্চল ও তৎসংলগ্ন নেপাল ও ভারতের জলপাইগুড়ি অঞ্চলে ভারী (৪৪-৮৮ মিঃমিঃ) হতে অতি ভারী (৮৮ মিঃমিঃ >) বর্ষণের সম্ভাবনা রয়েছে।
- এ সপ্তাহের দিনের ও রাতের তাপমাত্রা সামান্য বৃদ্ধি পেতে পারে।

(মোঃ শামীম হাসান ভূইয়া)

আবহাওয়াবিদ

পরিচালকের পক্ষে

বাংলাদেশ আবহাওয়া অধিদপ্তর, ঢাকা-১২০৭।

### **Short Weather Description, Period 08.07.2010 to 14.07.2010**

Under the influence of south west monsoon light to moderately heavy rainfall was recorded over the country except Feni in Chittagong Division during the period.

Maximum rainfall 275 mm was recorded at Cox's Bazar in Chittagong Division, which was 98% above normal

Minimum rainfall 1 mm was recorded at Khepupara in Barisal Division, which was 99% below normal.

Highest maximum temperature was recorded in Dhaka Division 35.3-24.8°C, Chittagong Division 34.7-24.2°C, Sylhet Division 34.7-24.8°C, Rajshahi Division 36.0-24.2°C, Khulna Division 37.0-24.5°C and Barisal Division 34.6-25.0°C

Extreme maximum temperature was recorded at Tangail in Dhaka Division 35.3°C, at Chandpur in Chittagong Division 34.7°C, at Srimongal in Sylhet Division 34.7°C, at Ishurdi in Rajshahi Division 36.0°C, at Chuadanga in Khulna Division 37.0°C and at Khepupara in Barisal Division 34.6°C

Lowest minimum temperature was recorded in Dhaka Division 24.8-28.2°C, Chittagong Division 24.2-27.5°C, Sylhet Division 24.8-28.5°C, Rajshahi Division 24.2-28.0°C, Khulna Division 24.5-29.0°C and Barisal Division 25.0-27.5°C

Extreme minimum temperature was recorded at Faridpur in Dhaka Division 24.8°C, at Cox's bazar in Chittagong Division 24.2°C, at Srimongal in Sylhet Division 24.8°C, at Rangpur in Rajshahi Division 24.2°C, at Satkhira in Khulna Division 24.5°C and at Khepupara in Barisal Division 25.0°C.

### **Rainfall analysis and average temperature: -**

| Name of the Divisions | Name of the Stations | Total Rainfall in (mm) | Normal Rainfall in (mm) | Deviation in % | Total Rainy days | Average Max Humidity in % | Average Min Humidity in % | Average Max. temp in °C | Average Normal Max. temp in °C | Average Min. temp in °C | Average Normal Min. temp in °C |
|-----------------------|----------------------|------------------------|-------------------------|----------------|------------------|---------------------------|---------------------------|-------------------------|--------------------------------|-------------------------|--------------------------------|
| Dhaka                 | Dhaka                | 53                     | 102                     | -48            | 6                | 90                        | 67                        | 33.0                    | 31.6                           | 27.4                    | 26.3                           |
|                       | Mymensingh           | 63                     | 107                     | -41            | 7                | **                        | **                        | **                      | 30.7                           | **                      | 26.0                           |
|                       | Faridpur             | 80                     | 83                      | -4             | 6                | 97                        | 64                        | 32.1                    | 31.5                           | 26.4                    | 25.9                           |
|                       | Madaripur            | 144                    | 96                      | 50             | 7                | **                        | **                        | **                      | 31.9                           | **                      | 25.8                           |
|                       | Tangail              | 64                     | 80                      | -20            | 7                | 95                        | 70                        | **                      | 31.6                           | **                      | 26.0                           |
| Chittagong            | Chittagong           | 147                    | 174                     | -16            | 6                | 97                        | 68                        | 31.1                    | 31.1                           | 25.7                    | 25.2                           |
|                       | Sitakunda            | **                     | 179                     | ***            | **               | **                        | **                        | **                      | 30.5                           |                         | 25.3                           |
|                       | Rangamati            | 94                     | 144                     | -35            | 5                | 97                        | 65                        | 31.2                    | 31.1                           | 25.0                    | 24.9                           |
|                       | Cox'sBazar           | 275                    | 242                     | 14             | 7                | 98                        | 83                        | **                      | 30.6                           | 25.4                    | 25.2                           |
|                       | Teknaf               | **                     | 236                     | ***            | **               | **                        | **                        | **                      | 30.0                           | **                      | 25.1                           |
|                       | Hatiya               | **                     | 189                     | ***            | **               | **                        | **                        | **                      | 29.9                           | **                      | 25.4                           |
|                       | Sandwip              | 215                    | 238                     | -10            | 6                | 96                        | 82                        | 30.5                    | 30.2                           | 25.9                    | 25.4                           |
|                       | Kutubdia             | **                     | 170                     | ***            | **               | **                        | **                        | **                      | 30.2                           | **                      | 25.4                           |
|                       | Feni                 | 0                      | 161                     | -100           | 0                | 100                       | 69                        | 30.4                    | 30.4                           | 25.8                    | 25.2                           |
|                       | M.Court              | 64                     | 158                     | ***            | 6                | 97                        | 67                        | 33.1                    | 30.8                           | 27                      | 25.8                           |
|                       | Chandpur             | **                     | 102                     | ***            | **               | **                        | **                        | **                      | 31.5                           | **                      | 25.9                           |
|                       | Comilla              | 20                     | 117                     | -83            | 4                | 95                        | 74                        | 32.2                    | 31.0                           | 26.3                    | 25.4                           |
| Sylhet                | Sylhet               | 63                     | 167                     | -62            | 7                | **                        | **                        | **                      | 31.3                           | **                      | 25.2                           |
|                       | Srimongal            | 21                     | 78                      | -73            | 5                | 96                        | 65                        | 33.1                    | 32.1                           | 25.8                    | 25.1                           |
| Rajshahi              | Rajshahi             | 39                     | 78                      | -50            | 6                | 97                        | 60                        | 34.1                    | 32.3                           | 26.5                    | 25.9                           |
|                       | Bogra                | 49                     | 95                      | -48            | 5                | 96                        | 64                        | 33.4                    | 31.9                           | 26.8                    | 26.2                           |
|                       | Rangpur              | 109                    | 130                     | -16            | 5                | 95                        | 75                        | 31.3                    | 31.3                           | 26.1                    | 25.9                           |
|                       | Dinajpur             | 73                     | 125                     | -42            | 6                | 98                        | 58                        | 31.8                    | 31.6                           | 26.5                    | 25.5                           |
|                       | Ishurdi              | 97                     | 76                      | 28             | 6                | 98                        | 59                        | 33.7                    | 32.1                           | 26.5                    | 25.5                           |
| Khulna                | Khulna               | 49                     | 91                      | -46            | 5                | 97                        | 60                        | 33.3                    | 32.0                           | 26.8                    | 26.2                           |
|                       | Jessore              | 39                     | 77                      | -49            | 4                | **                        | **                        | 33.9                    | 32.5                           | 26.7                    | 26.0                           |
|                       | Chuadanga            | 38                     | 89                      | -57            | 3                | 97                        | 57                        | 34.2                    | 32.8                           | 26.3                    | 26.2                           |
|                       | Satkhira             | 81                     | 76                      | 7              | 3                | 97                        | 58                        | 33.4                    | 32.3                           | 27.3                    | 26.3                           |
| Barisal               | Barisal              | 47                     | 96                      | -51            | 5                | 97                        | 78                        | 31.5                    | 31.2                           | 26.5                    | 25.6                           |
|                       | Bhola                | **                     | 102                     | ***            |                  | **                        | **                        | **                      | 30.8                           | **                      | 25.7                           |
|                       | Patuakhali           | 59                     | 105                     | -44            | 7                | 100                       | 79                        | 32.8                    | 31.1                           | 26.6                    | 25.9                           |
|                       | Khepupara            | 1                      | 138                     | -99            | 6                | 98                        | 61                        | 31                      | 30.7                           | 26.3                    | 26.0                           |

N.B. Analyses contained in this bulletin are based on preliminary un-checked data.

\*\* Data not received. \*\*\* Data not available.

C:\Users\Gis02\Desktop\B3July 2010.doc Sahidul Hasan