



**Government of the Peoples' Republic of Bangladesh  
Bangladesh Meteorological Department  
(Meteorological Headquarter)  
Meteorological Complex, Agargaon, Dhaka-1207.**

Agm-3 (2)/2010/ 25

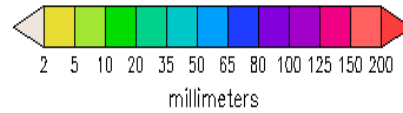
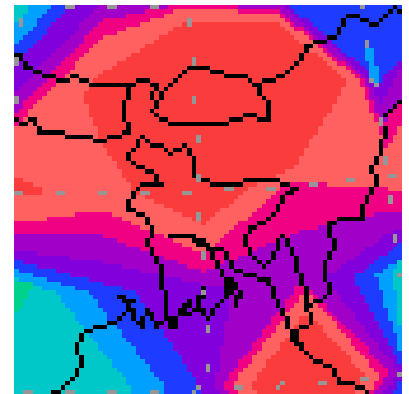
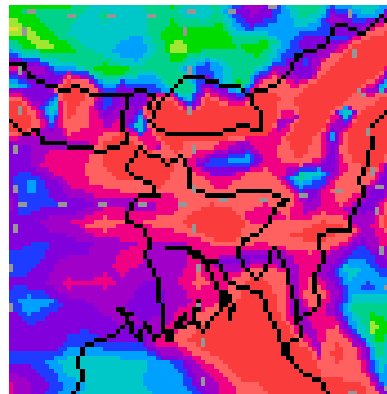
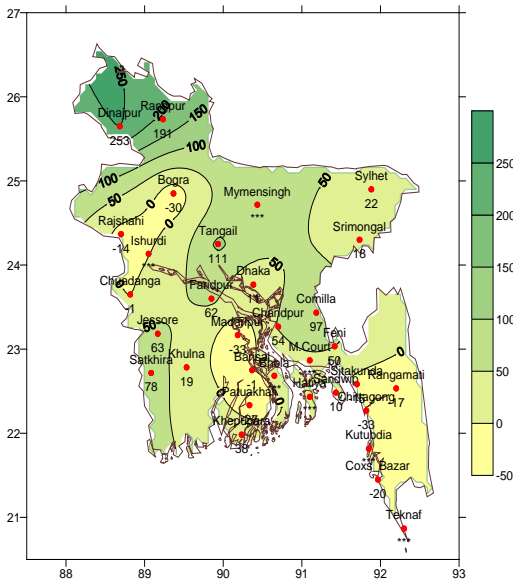
Issue date: 01-07-2010

**Forecast for the period: 01.07.2010 to 07.07.2010**

**Rainfall Departure as a percentage of Normal  
(22-06-2010 to 30-06-2010)**

**Accumulated Rainfall Forecast  
(01-07-2010 to 07-07-2010)**

**Extended outlook  
(08-07-2010 to 14-07-2010)**



**Highlights:**

Free water loss during last week was averaged 2.9 mm per day.  
Sunshine hour during last week was averaged 2.6 hours per day.

**Advisory for the period from 01.07.2010 to 07.07..2010**

Free water loss during the Period is expected to be between mm 3.0 to 4.0 mm per day.  
Bright sunshine hour during the Period is expected to be between 3.2 to 4.2 hrs per day.

**Weather:**

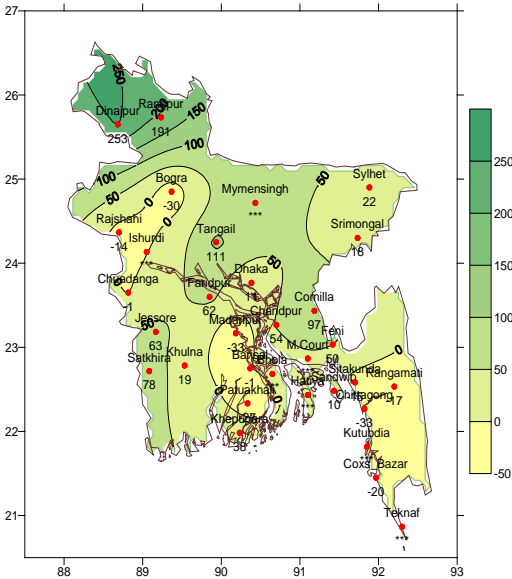
- At present Southwest Monsoon is fairly active over Bangladesh and moderate over North Bay.
- Under the influence of South-West monsoon Light (4mm-10mm) to moderate (10mm-22mm) rain/thunder shower accompanied by temporary gusty/squally wind may occur at many places over the country with a chance of moderately heavy (22 mm-44mm) to heavy (44 mm-88mm) falls at places over North and South-Eastern Part of the country during this period.
- Slight rise in day and night temperature are expected over the country during this period.

(Md. Shameem Hassan Bhuiyan)  
Meteorologist  
For Director  
Bangladesh Meteorological Department  
Dhaka-1207.

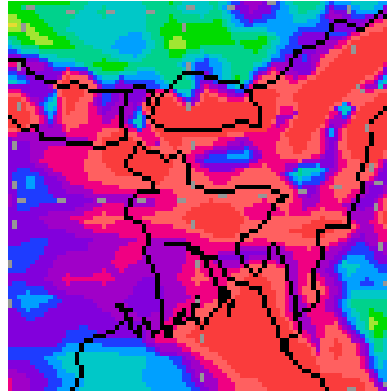
Bengali Version

**Forecast for the period: 01.07.2010 to 07.07.2010**

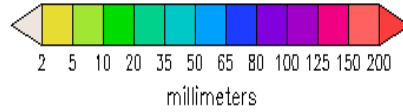
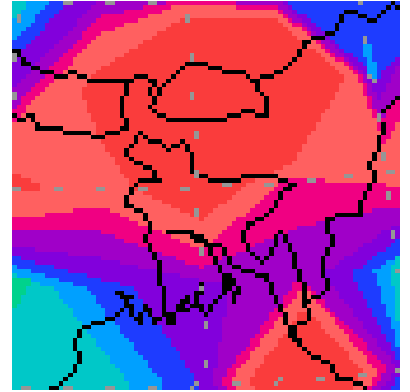
**Rainfall Departure as a percentage of Normal  
(22-06-2010 to 30-06-2010)**



**Accumulated Rainfall Forecast  
(01-07-2010 to 07-07-2010)**



**Extended outlook  
(08-07-2010 to 14-07-2010)**



**চাঁদ 'এক' মগ্ন-**

MZ মব্রন এব'ঊফেভি ~ ~ বক Mo 2.9 বগ্নগ্ন বQj |  
MZ মব্রন ম'কি Y Kব্রj i % বক Mo 2.6 NবUv বQj |

**চের্নিত- 01-07-2010 Lt t\_ tK 07-07-2010 Lt chs**

G বগ্নগ্ন এব'ঊফেভি ~ ~ বক Mo গvb 3.0 বগ্নগ্ন t\_ tK 4.0 বগ্নগ্ন \_vKtZ চব্রি |  
G বগ্নগ্ন ম'কি Y Kব্রj i ~ ~ বক Mo গvb 3.2 NবUv t\_ tK 4.2 NবUv \_vKtZ চব্রি |

**আবল গ্ন-**

- eZগুব ~ ব'ব চ'গ ত'গ্নগ্ন এব'গ্নসj ব' tK Kg ম'ব'q Ges et'zcmMti গvSvix i tqtQ |
- G মব্রন t\_ tki AতK ~ ব'ব A ~ ব'q ~ gKv A\_ ev Stov nvl qmn nvj Kv (4 ব'গ্নগ্ন-10 ব'গ্নগ্ন) t\_ tK গvSvix (10 ব'গ্নগ্ন-22 ব'গ্নগ্ন) ai tbi এব' / eR' এব' নtZ চব্রি | tmB মব্র t\_ tki DEi I ~ ব'ব-চের্নিতj i ~ GK ~ ব'ব গvSvix ai tbi fvi x (22 ব'গ্নগ্ন-44 ব'গ্নগ্ন) নtZ fvi x (44 ব'গ্নগ্ন-88 ব'গ্নগ্ন) el fyi ম'বেব i tqtQ |
- G মব্রনি w tbi I ivtZi Zvcg'v mvgvb' এব' tctZ চব্রি |

(tgv kvgxg nvmv fBqv)  
Abnl qme`  
cni Pvj tKi ctq |  
evsj v` k Abnl qv Ana` Bi , XvKv-1207 |

**Short Weather Description, Period: 22.06.2010 to 30.06.2010**

Light to moderately heavy rainfall was recorded over the country except Sitakunda, Teknaf and Kutubdia in Chittagong Division during the period.

Maximum rainfall 448 mm was recorded at Rangpur in Rajshahi Division, which was 125% above normal

Minimum rainfall 58 mm was recorded at Ishurdi in Rajshahi Division, which was 34% below normal.

Highest maximum temperature was recorded in Dhaka Division 26.4-34.8°C, Chittagong Division 27.7-34.4°C, Sylhet Division 26.8-34.9°C, Rajshahi Division 27.2-35.5°C, Khulna Division 29.7-35.8°C and Barisal Division 28.1-33.6°C

Extreme maximum temperature was recorded at Madaripur in Dhaka Division 34.8°C, at Rangamati in Chittagong Division 34.4°C, at Sylhet in Sylhet Division 34.9°C, at Ishurdi in Rajshahi Division 35.5°C, at Jessore in Khulna Division 35.8°C and at Patuakhali in Barisal Division 33.6°C

Lowest minimum temperature was recorded in Dhaka Division 23.6-28.5°C, Chittagong Division 24.5-27.5°C, Sylhet Division 23.8—27.4°C, Rajshahi Division 23.2-27.8°C, Khulna Division 24.6-28.5°C and Barisal Division 24.3-28.8°C

Extreme minimum temperature was recorded at Madaripur in Dhaka Division 23.6°C, at Camilla and Sandwip in Chittagong Division 24.5°C, at Srimongal in Sylhet Division 23.8°C, at Rangpur in Rajshahi Division 23.2°C, at Khulna in Khulna Division 24.6°C and at Barisal in Barisal Division 24.3°C.

**Rainfall analysis and average temperature: -**

| Name of the Divisions | Name of the Stations | Total Rainfall in (mm) | Normal Rainfall in (mm) | Deviation in % | Total Rainy days | Average Max Humidity in % | Average Min Humidity in % | Average Max. temp in °C | Average Normal Max. temp in °C | Average Min. temp in °C | Average Normal Min. temp in °C |
|-----------------------|----------------------|------------------------|-------------------------|----------------|------------------|---------------------------|---------------------------|-------------------------|--------------------------------|-------------------------|--------------------------------|
| Dhaka                 | Dhaka                | 104                    | 94                      | 11             | 5                | 91                        | 79                        | 32.0                    | 31.9                           | 26.9                    | 26.3                           |
|                       | Mymensingh           | 162                    | 113                     | 43             | 4                | 96                        | 81                        | 30.6                    | 31.2                           | 26.4                    | 26.1                           |
|                       | Faridpur             | 157                    | 97                      | 62             | 9                | 97                        | 72                        | 31.4                    | 31.7                           | 26.4                    | 25.8                           |
|                       | Madaripur            | 81                     | 120                     | -33            | 6                | **                        | **                        | **                      | 31.8                           | **                      | 25.9                           |
|                       | Tangail              | 203                    | 96                      | 111            | 7                | **                        | **                        | **                      | 32.1                           | **                      | 26.0                           |
| Chittagong            | Chittagong           | 154                    | 229                     | -33            | 6                | 98                        | 61                        | 31.6                    | 31.3                           | 26.0                    | 25.1                           |
|                       | Sitakunda            | 173                    | 203                     | -15            | 6                | **                        | **                        | **                      | 30.7                           | **                      | 25.5                           |
|                       | Rangamati            | 123                    | 149                     | -17            | 8                | 97                        | 87                        | 32.7                    | 31.1                           | 25.9                    | 24.9                           |
|                       | Cox'sBazar           | 227                    | 283                     | -20            | 9                | **                        | **                        | **                      | 30.4                           | **                      | 25.2                           |
|                       | Teknaf               | **                     | 376                     | ***            | **               | **                        | **                        | **                      | 29.8                           | **                      | 25.1                           |
|                       | Hatiya               | **                     | 192                     | ***            | **               | **                        | **                        | **                      | 30.2                           | **                      | 25.6                           |
|                       | Sandwip              | 204                    | 186                     | 10             | 8                | 97                        | 80                        | 28.4                    | 30.2                           | 25.8                    | 25.6                           |
|                       | Kutubdia             | **                     | 229                     | ***            | **               | **                        | **                        | **                      | 30.5                           | **                      | 25.5                           |
|                       | Feni                 | 249                    | 166                     | 50             | 7                | 99                        | 61                        | 30.3                    | 30.7                           | 25.8                    | 25.3                           |
|                       | Majideecourt         | 353                    | 183                     | ***            | 8                | 100                       | 70                        | 32.1                    | 30.9                           | 26.2                    | 25.6                           |
|                       | Chandpur             | 163                    | 106                     | 54             | 6                | 98                        | 61                        | 31.6                    | 31.4                           | 26.6                    | 25.9                           |
|                       | Comilla              | 235                    | 119                     | 97             | 8                | 97                        | 65                        | 31.3                    | 31.4                           | 26.2                    | 25.5                           |
| Sylhet                | Sylhet               | 257                    | 211                     | 22             | 9                | 97                        | 76                        | 32.0                    | 31.5                           | 26.0                    | 25.1                           |
|                       | Srimongal            | 130                    | 110                     | 18             | 9                | 97                        | 65                        | 31.8                    | 32.2                           | 25.3                    | 25.2                           |
| Rajshahi              | Rajshahi             | 89                     | 104                     | -14            | 8                | **                        | **                        | **                      | 32.7                           | **                      | 25.9                           |
|                       | Bogra                | 79                     | 100                     | -21            | 5                | 97                        | 60                        | 31.0                    | 32.2                           | 26.0                    | 26.3                           |
|                       | Rangpur              | 364                    | 125                     | 191            | 9                | 97                        | 81                        | 30.4                    | 31.8                           | 25.0                    | 25.9                           |
|                       | Dinajpur             | 448                    | 127                     | 253            | 9                | 98                        | 67                        | 30.8                    | 32.2                           | 25.3                    | 25.6                           |
|                       | Ishurdi              | 58                     | 88                      | ***            | 6                | 89                        | 64                        | 32                      | 32.4                           | 26.7                    | 25.7                           |
| Khulna                | Khulna               | 133                    | 112                     | 19             | 7                | 98                        | 62                        | 32.5                    | 32.2                           | 26.4                    | 26.2                           |
|                       | Jessore              | 166                    | 102                     | 63             | 6                |                           |                           | 30.03                   | 32.7                           | 27.1                    | 26.0                           |
|                       | Chuadanga            | 82                     | 83                      | -1             | 8                | 98                        | 68                        | 32.6                    | 33.0                           | 26.8                    | 26.2                           |
|                       | Satkhira             | 187                    | 105                     | 78             | 6                | 97                        | 68                        | 33.1                    | 32.4                           | 27.0                    | 26.4                           |
| Barisal               | Barisal              | 131                    | 132                     | -1             | 8                | 97                        | 79                        | 31.6                    | 31.3                           | 26.6                    | 25.8                           |
|                       | Bhola                | **                     | 142                     | ***            | **               | **                        | **                        | **                      | 30.8                           | **                      | 25.7                           |
|                       | Patuakhali           | 155                    | 207                     | -25            | 8                | **                        | **                        | **                      | 31.0                           | **                      | 26.1                           |
|                       | Khepupara            | 233                    | 169                     | 38             | 5                | 100                       | 72                        | 32                      | 30.8                           | 27.3                    | 26.1                           |

N.B. Analyses contained in this bulletin are based on preliminary un-checked data.

\*\* Data not received. \*\*\* Data not available.