



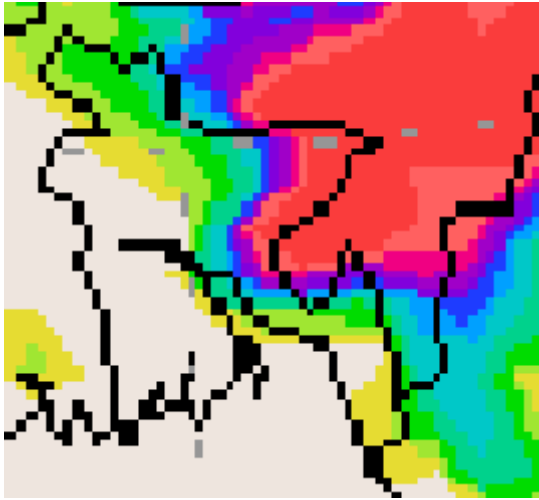
Government of the Peoples' Republic of Bangladesh
Bangladesh Meteorological Department
(Meteorological Headquarter)
Meteorological Complex, Agargaon, Dhaka-1207.

Agm-3 (2)/2010/ 16

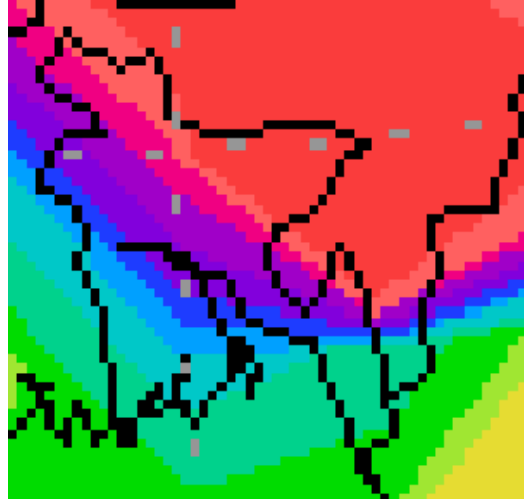
Issue date: 22-04-2010

Forecast for the period: 22.04.2010 to 30.04.2010

Accumulated Rainfall Forecast (22-04-2010 to 30-04-2010)



Extended outlook for the next week (01-05-2010 to 07-05-2010)



Highlights:

Free water loss during 15-04-2010 to 21-04-2010 was averaged 4.87 mm per day.

Sunshine hour during 15.04.2010 to 21-04.2010 was averaged 6.73 hours per day.

Advisory for the period from 22.04.2010 to 30.04.2010.

Free water loss during this Period is expected to be between 4.0 to 5.0 mm per day.

Bright sunshine hour during this Period is expected to be between 6.0 to 7.0 hrs per day.

Weather:

- Light to moderate rain/thunder shower accompanied by temporary gusty/squally wind speed 40-60 km or more may occur at few places over Sylhet, Dhaka and Chittagong divisions and the regions of Rangpur, Jessore, Kustia, Pabna, Bogra & Comilla and with a chance of moderately heavy to heavy falls at places over Sylhet, Dhaka and Chittagong along with regions of Asam and Meghalaya during this period.
- Day and night temperature may remain nearly unchanged over the country during this period.
- Supplementary irrigation may necessary for the Boro crops over the country except North and North-Eastern part during the period.
- Weather may remain favourable for the application of fertilizer and agricultural chemicals.

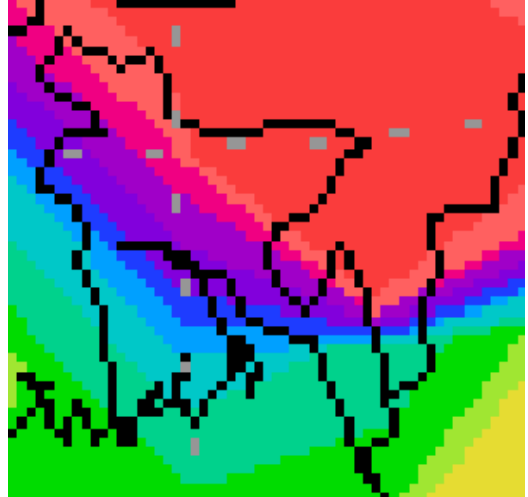
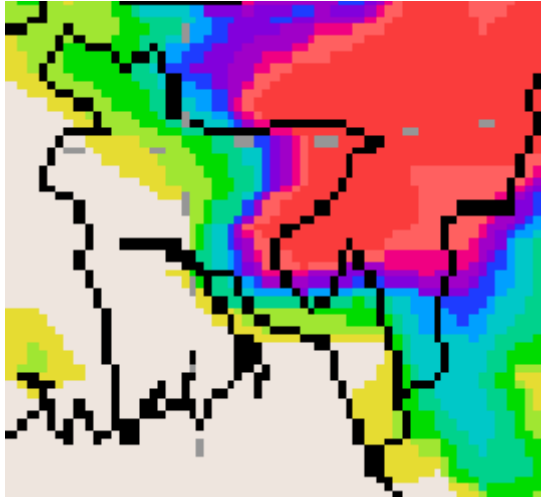
(Md. Shameem Hassan Bhuiyan)
Meteorologist
For Director
Bangladesh Meteorological Department
Dhaka-1207.

Bengali Version

Forecast for the period: 22.04.2010 to 30.04.2010

Accumulated Rainfall Forecast (22-04-2010 to 30-04-2010)

Extended outlook for the next week (01-05-2010 to 07-05-2010)



চাঁদ্র একো মগত-

এরূক্ষফেভি ১১ বক মো 15-04-2010 Bs ত_তক 21-04-2010 Bs চস-4.87 বগতবগত বক |
মহাকি Y Kvtj i ১১ বক মো 15-04-2010 Bs ত_তক 21-04-2010 Bs চস-6.73 নুব বক |

চেরিম- 22-04-2010 Bs ত_তক 30-04-2010 Bs চস

2010 Bs মবতj i গবক গবমি G মগতq এরূক্ষফেভি ১১ বক মো গব 4.0 বগতবগত ত_তক 5.0 বগতবগত _বকতZ চবতি |
2010 Bs মবতj i গবক গবমি G মগতq মবতনি মহাকি YKvtj i ১১ বক মো গব 6.0 নুব ত_তক 7.0 নুব _বকতZ চবতি |

আবলি কব-

- G মবতনি বমতj U, XvKv I PUMg বেবমমনি iscj, হতকবি, কুবq e_ov, চেবব I Kvgj v AAতj i বকZবকZ বতব Ges ত_তকি AbT ১GK বতব নুবq 40-60 বকতবগত ev Avi I আক তেতM ১gKv A_ev Stov নব qvmm এও / eRএও নতZ চবতি | তমB মবত_ বমতj U, XvKv I PUMg বেববমি ১GK ববমনি Avmvg/tgNvj q AAতj গবSvix aiতবি ববিx নতZ ববিx elYi মবেব iতqতQ |
- G মবতনি বতবি I ivতZi ZvcgvT v cOq Acwi ewZZ চবতি |
- G মবতনি ত_তকি DEi I DEi চেআj e ১ZZ ত_তকি AbT তেবব ktm ১মুতK ততPi cOqvRb নতZ চবতি |
- G মবতনি আবলি কব মবি I Kwl i vmvqubK ১ে cOqvMi DcতবMx _বকতZ চবতি |

(তবগত কবগব নববব fBqv)
আবলি কবে`
চবি Pvj তকি চত
এবসj বত`k আবলি কব আবি Bi, XvKv-1207 |

Short Weather Description, Period: 15.04.2010 to 21.04.2010

Light to Heavy rainfall recorded Except Madaripur in Dhaka Division, Cox'sBazar, M. Court in Chittagong Division, Khulna, Jessore, Satkhira in Khulna Division, and Barisal Division all over the country during the period.

Maximum rainfall 308 mm was recorded at Sylhet in Sylhet Division, which was 340% Above normal

Minimum rainfall Trace was recorded at Chuadanga in Khulna Division, which was not measurable.

Highest maximum temperature was recorded in Dhaka Division 27.2-37.6°C, Chittagong Division 30.3-36.8°C, Sylhet Division 27.3-35.5°C, Rajshahi Division 24.6-40.6°C, Khulna Division 34.6-41.2°C and Barisal Division 33.0-36.0°C.

Extreme maximum temperature was recorded at Faridpur in Dhaka Division 37.6°C, at Rangamati in Chittagong Division 36.8°C, at Sylhet in Sylhet Division 35.5°C, at Rajshahi in Rajshahi Division 40.6°C, at Chuadanga in Khulna Division 41.2°C and at Patuakhali in Barisal Division 36.0°C.

Lowest minimum temperature was recorded in Dhaka Division 20.8-29.0°C, Chittagong Division 21.4-28.5°C, Sylhet Division 19.0-24.6°C, Rajshahi Division 20.0-28.0°C, Khulna Division 22.7-28.5°C and Barisal Division 23.1-28.8°C.

Extreme minimum temperature was recorded at Dhaka in Dhaka Division 20.8°C, at Feni in Chittagong Division 21.4°C, at Sylhet in Sylhet Division 19.0°C, at Rajshahi in Rajshahi Division 20.0°C, at Chuadanga in Khulna Division 22.7°C and at Barisal in Barisal Division 23.1°C.

Rainfall analysis and average temperature: -

Name of the Stations	Total Rainfall in (mm)	Normal Rainfall in (mm)	Deviation in %	Total Rainy days	Average Max Humidity in %	Average Min Humidity in %	Average Max. temp in °C	Average Normal Max. temp in °C	Average Min. temp in °C	Average Normal Min. temp in °C
Dhaka	14	21	-33	1	82	49	35.1	34.2	23.8	25.7
Mymensingh	62	26	138	4	87	76	32.0	32.4	22.4	22.4
Faridpur	5	20	-75	1	94	49	35.5	34.7	23.2	25.7
Madaripur	0	23	-100	0	89	57	35.0	34.2	23.4	26.1
Tangail	27	19	42	1	92	58	34.7	34.1	22.9	24.1
Chittagong	1	25	-96	3	92	43	33.7	31.9	23.5	26.3
Sitakunda	8	32	-75	3	96	50	33.9	32.0	23.5	25.9
Rangamati	29	32	-9	3	96	32	33.7	33.1	22.5	26.2
Cox'sBazar	0	16	-100	0	76	71	34.1	32.5	23.9	26.6
Teknaf	1	16	-94	1	97	65	33.0	31.9	23.8	25.7
Hatiya	1	32	-97	3	95	56	32.9	32.1	23.9	27.2
Sandwip	1	31	-97	3	88	65	33.0	31.4	24.5	27.0
Kutubdia	1	13	-92	1	90	59	32.9	31.5	24.1	27.0
Feni	22	33	-33	3	100	50	32.6	32.3	23.2	25.6
M.Court	0	17	-100	0	97	49	34.3	32.9	23.4	27.0
Chandpur	1	24	-96	1	97	45	34.7	33.1	23.4	25.7
Comilla	11	22	-50	2	**	**	**	32.3	22.5	**
Sylhet	308	70	340	5	95	68	29.9	31.1	21.0	24.7
Srimongal	109	40	173	6	96	44	33.2	32.8	21.4	22.9
Rajshahi	20	8	150	1	97	33	37.4	36.3	22.7	25.6
Bogra	15	9	67	2	**	**	**	34.0	22.5	**
Rangpur	85	15	467	5	94	73	29.7	31.9	20.9	20.5
Dinajpur	25	9	178	2	96	57	30.8	33.2	20.8	23.3
Ishurdi	10	9	11	1	96	41	36.7	35.8	22.9	25.7
Khulna	0	10	-100	0	95	50	35.7	35.0	24.0	27.1
Jessore	0	12	-100	0	**	**	37.3	36.0	23.3	27.2
Chuadanga	Trace	9	***	1	96	37	37.8	35.9	23.2	26.3
Satkhira	0	10	-100	0	98	52	35.9	35.3	24.2	27.6
Barisal	0	18	-100	0	91	60	34.4	33.8	23.6	26.9
Bhola	0	22	-100	0	97	70	33.7	33.1	24.1	26.6
Patuakhali	0	21	-100	0	96	69	34.9	33.3	23.9	26.7
Khepupara	0	18	-100	0	97	56	33.5	32.7	24.8	27.0

N.B. Analyses contained in this bulletin are based on preliminary un-checked data.

** Data not received. *** Data not available.