



Government of the Peoples' Republic of Bangladesh
Bangladesh Meteorological Department
(Meteorological Headquarter)
Meteorological Complex, Agargaon, Dhaka-1207.

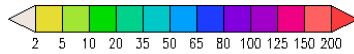
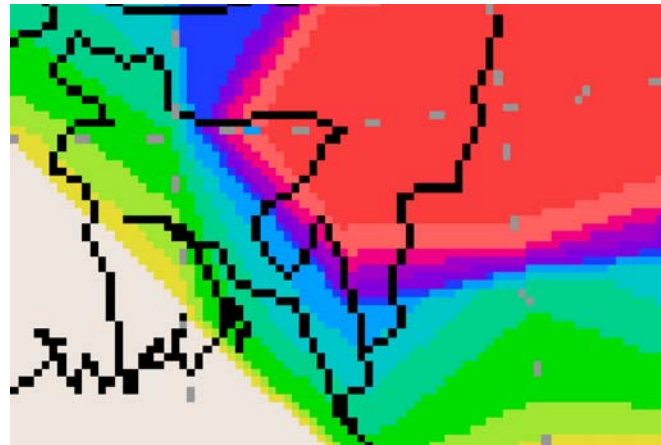
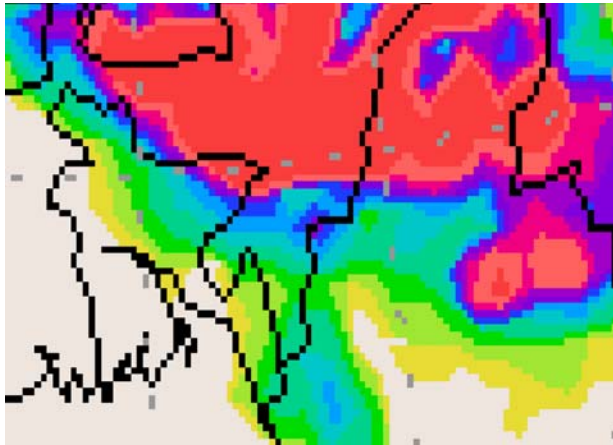
Agm-3 (2)/2010/ 15

Issue date: 15-04-2010

Forecast for the period: 14.04.2010 to 21.04.2010

Accumulated Rainfall Forecast (15-04-2010 to 21-04-2010)

Extended outlook for the next week (22-04-2010 to 30-04-2010)



Highlights:

Free water loss during 07-04-2010 to 14-04-2010 was averaged 5.28 mm per day.

Sunshine hour during 08.04.2010 to 14-04.2010 was averaged 7.35 hours per day.

Advisory for the period from 15.04.2010 to 21.04.2010.

Free water loss during the Period is expected to be between 5.0 to 5.50 mm per day.

Bright sunshine hour during the Period is expected to be between 6.25 to 7.25 hrs per day.

Weather:

- Light to moderate rain/thunder shower accompanied by temporary gusty/squally wind speed 40-60 km or more may occur at few places over Sylhet, Rangpur and Dhaka divisions and the regions of Jessore, Kustia and one or two places else where over the country with a chance of heavy to very heavy falls at places along with catchment area of Asam and Meghalaya region during this period.
- Day and night temperature may remain nearly unchanged over the country during this period.
- Supplementary irrigation may necessary for the Boro crops over the country except North and North-Eastern part during the period.
- Weather may remain favourable for the application of fertilizer and agricultural chemicals.

(Md. Shameem Hassan Bhuiyan)
Meteorologist
For Director
Bangladesh Meteorological Department
Dhaka-1207.

Short Weather Description, Period: 07.04.2010 to 14.04.2010

Light to Heavy rainfall recorded Tangail in Dhaka Division, Chittagong, Sandwip in Chittagong Division, Sylhet, Srimongal in Sylhet Division, Bogra in Rajshahi Division, Rangpur, Dinajpur in Rangpur Division, Patuakhali in Barisal Division all over the country during the period.

Maximum rainfall 65 mm was recorded at Sylhet in Sylhet Division, which was 4% Bellow normal

Minimum rainfall Trace was recorded at Patuakhali in Barisal Division, which was not measurable.

Highest maximum temperature was recorded in Dhaka Division 30.4-39.7°C, Chittagong Division 31.0-36.2°C, Sylhet Division 31.3-36.5°C, Rajshahi Division 30.2-42.5°C, Khulna Division 35.2-41.5°C and Barisal Division 33.0-38.8°C

Extreme maximum temperature was recorded at Faridpur in Dhaka Division 39.7°C, at Sitakunda in Chittagong Division 36.2°C, at Srimongal in Sylhet Division 36.5°C, at Rajshahi and Ishurdi in Rajshahi Division 42.5°C, at Chuadanga in Khulna Division 41.5°C and at Patuakhali in Barisal Division 38.8°C

Lowest minimum temperature was recorded in Dhaka Division 20.4-28.2°C, Chittagong Division 23.4-28.4°C, Sylhet Division 20.3-26.5°C, Rajshahi Division 18.0-27.7°C, Khulna Division 23.5-28.5°C and Barisal Division 25.0-29.3°C

Extreme minimum temperature was recorded at Mymensingh in Dhaka Division 20.4°C, at Hatiya in Chittagong Division 23.4°C, at Sylhet in Sylhet Division 20.3°C, at Rangpur in Rajshahi Division 18.0°C, at Chuadanga in Khulna Division 23.5°C and at Khepupara in Barisal Division 25.0°C.

Rainfall analysis and average temperature: -

Name of the Divisions	Name of the Stations	Total Rainfall in (mm)	Normal Rainfall in (mm)	Deviation in %	Total Rainy days	Average Max Humidity in %	Average Min Humidity in %	Average Max. temp in °C	Average Normal Max. temp in °C	Average Min. temp in °C	Average Normal Min. temp in °C
Dhaka	Dhaka	0	21	-100	0	83	46	36.5	34.2	27.1	23.8
	Mymensingh	0	26	-100	0	83		33.4	32.4	24.6	22.4
	Faridpur	0	20	-100	0	**	**	**	34.7	**	23.2
	Madaripur	0	23	-100	0	92	52	36.1	34.2	26.4	23.4
	Tangail	8	19	-58	1	93	55	35.7	34.1	25.4	22.9
Chittagong	Chittagong	0	25	-100	0	97	53	33.4	31.9	26.1	23.5
	Sitakunda	0	32	-100	0	**	**	**	32.0	**	23.5
	Rangamati	0	32	-100	0	**	**	**	33.1	**	22.5
	Cox'sBazar	0	16	-100	0	**	**	**	32.5	**	23.9
	Teknaf	0	16	-100	0	**	**	**	31.9	**	23.8
	Hatiya	0	32	-100	0	**	**	**	32.1	**	23.9
	Sandwip	5	31	-84	2	91	68	32.7	31.4	27.0	24.5
	Kutubdia	0	13	-100	0	**	**	**	31.5	**	24.1
	Feni	0	33	-100	0	**	**	**	32.3	**	23.2
	M.Court	0	17	-100	0	97	53	35.3	32.9	27.0	23.4
	Chandpur	0	24	-100	0	97	53	35.2	33.1	26.2	23.4
	Comilla	0	22	-100	0	83	65	33.8	32.3	25.6	22.5
Sylhet	Sylhet	67	70	-4	5	91	55	33.6	31.1	23.6	21.0
	Srimongal	15	40	-63	1	96	43	35.7	32.8	24.5	21.4
Rajshahi	Rajshahi	0	8	-100	0	96	63	40.0	36.3	25.6	22.7
	Bogra	6	9	-33	1	95	47	34.4	34.0	25.3	22.5
	Rangpur	47	15	213	2	91	61	32.9	31.9	23.7	20.9
	Dinajpur	18	9	100	1	96	35	33.8	33.2	23.9	20.8
	Ishurdi	0	9	-100	0	93	64	39.5	35.8	25.8	22.9
Khulna	Khulna	0	10	-100	0	96	32	36.8	35.0	27.1	24.0
	Jessore	0	12	-100	0	**	**	38.1	36.0	26.2	23.3
	Chuadanga	0	9	-100	0	97	29	38.4	35.9	26	23.2
	Satkhira	0	10	-100	0	93	28	37.0	35.3	27.2	24.2
Barisal	Barisal	0	18	-100	0	95	55	35.4	33.8	26.7	23.6
	Bhola	0	22	-100	0	97	66	34.2	33.1	26.5	24.1
	Patuakhali	Trace	21	***	1	98	64	35.7	33.3	26.1	23.9
	Khepupara	0	18	-100	0	97	53	34.0	32.7	27.0	24.8

N.B. Analyses contained in this bulletin are based on preliminary un-checked data.

** Data not received. *** Data not available.